

# **LIBMAN**<sup>®</sup>

## **COMMERCIAL**



*Family Made  
In The USA  
Since 1896*

## **COMMERCIAL PRODUCT CATALOG**

**FOODSERVICE | HEALTH CARE | HOSPITALITY  
INDUSTRIAL | JANSAN | OFFICE SUPPLY**





1 Libman Way  
Arcola, IL 61910

Toll Free: (800) 646-6262

Phone: (217) 268-4200

Orders Fax: (217) 717-9931

Orders Email: [orders@libman.com](mailto:orders@libman.com)

Email: [info@libmanpro.com](mailto:info@libmanpro.com)

Website: [libmanpro.com](http://libmanpro.com)

Additional Product Information Enclosed



**1.6 Million Square Feet  
of Manufacturing  
in the USA!**



## The Libman Commercial Advantage

**Unmatched in the combination of quality, amount of USA-based production, and service levels in the industry.**

- The vast majority of Libman Commercial sales are manufactured from raw material to finished good in our Illinois-based plant.
- Extensive stock inventory; all orders are filled and shipped within 2-4 days.
- Highest service rate in the industry, often exceeding 98-99%.
- Known for our commitment to quality above all else - our products last longer and perform better.
- One of the broadest and most unique product line offerings in the broom, brush, and mop industry.
- Continuous product development and improvement.



# Table of Contents

## **UPRIGHT BROOMS ..... 1**

Synthetic Fiber & Corn Upright Brooms ..... 2-3

## **DUST PANS & ACCESSORIES ..... 4**

Upright Lobby Dust Pan & Broom Sets ..... 5

Dust Pans & Brush Sets ..... 6-8

## **PUSH BROOMS ..... 9**

Threaded Push Brooms ..... 10

Heavy-Duty Assembled Push Brooms ..... 11

Industrial-Grade Assembled Push Brooms ..... 12

## **BRUSHES/SCRUBS ..... 13**

Floor/Surface Scrubs ..... 14

Multi-Purpose Brushes ..... 15-16

Toilet Brushes, Plungers & Caddies ..... 17-18

## **MOPS & BUCKETS ..... 19**

Twist Mops & Spin Mop ..... 20

Deck Mops ..... 21

Mop Buckets, Handles, & Caution Sign ..... 22

Wet Mop Heads ..... 23

Utility Buckets ..... 24

Heavy & Light Duty Sponge Mops ..... 25

Dust Mops & Microfiber Flat Mops ..... 26-27

Freedom® Spray Mop & Floor Liquid Cleaners... 28

## **TRASH CANS ..... 29**

32 Gallon Round Trash Can ..... 30

## **HOUSEKEEPING TOOLS & RUBBER GLOVES .. 31**

Extended Reach, Lambswool, & Feather Dusters ..... 32

Handheld Dusters & Lint Removal Tools ..... 33

Maid Caddy & Rubber Gloves ..... 34

## **KITCHEN TOOLS ..... 35**

Sponges & Scrubbers ..... 36-37

Kitchen & Culinary Dish Brushes ..... 38-39

Soap Dispensing Dish Wands ..... 40

Grill Brushes ..... 41

## **SQUEEGEES, VEHICLE WASH, & CLOTHS ..... 42**

Floor Squeegees ..... 43

Window Squeegees ..... 44-45

Window Liquid Cleaners & Buckets ..... 45

Vehicle Wash Brushes & Accessories ..... 46

Wipes & Microfiber Cloths ..... 47

## **HANDLES ..... 48**


Threaded, Tapered, and Extension Handles ..... 49

## **INDEX ..... 50-52**

## **SHOW ROOM MERCHANDISING ..... 53**

## **BUSINESS TERMS ..... 54**





Superior flagging, PET fiber fill, and a sturdy handle-to-block connection make Libman the broom market leader.



# Upright Brooms



Libman synthetic fiber upright brooms are made in the USA with approximately 22 recycled PET water bottles per broom.

**#997  
Wide Commercial Angle Broom**



- 15" wide angle broom with 55" total height.
- 1" diameter steel handle with handle grip and hanger hole.
- 6" long staple-set, flagged fibers.
- Solid, one-piece resin block.
- Firm but flexible long-lasting fibers, made with recycled PET.
- Available with a black handle as #1115.
- Excellent for all multi-surface applications.

Case Pack	Case Weight	Case Dimensions
6	13.65	55.00 x 15.00 x 4.38

**#994  
Commercial Angle Broom**



- 13" wide angle broom with 53" total height.
- 1" diameter steel handle with handle grip and hanger hole.
- 5" long staple-set, flagged fibers.
- Solid, one-piece resin block.
- Firm but flexible long-lasting fibers, made with recycled PET.
- Excellent for stiff/wet sweep applications, including foodservice.

Case Pack	Case Weight	Case Dimensions
6	10.97	55.00 x 15.00 x 4.50

**#1102  
Rough Surface Angle Broom**



- 15" wide angle broom with 53" total height.
- 1" diameter steel handle with handle grip and hanger hole.
- 5" long staple-set fibers are not flagged.
- Solid, one-piece resin block.
- Firm but flexible long-lasting fibers, made with recycled PET.
- Excellent for all outdoor surfaces as well as any wet, sticky floors in foodservice and food processing applications.

Case Pack	Case Weight	Case Dimensions
6	12.68	53.63 x 15.00 x 4.63

**#502 Janitor Corn Broom - Steel Handle  
#1335 Janitor Corn Broom - Wood Handle**



- 12.5" wide sweeping surface with 57" total height.
- #502: 1" diameter steel handle with handle grip and hanger hole.
- #1335: 1 1/8" thick, lacquered wood handle.
- 15-ply polymer thread and 5 rows of stitching.
- 100% natural broom corn.
- True weight corn broom.
- Excellent for all multi-surface applications.

Item	Case Pack	Case Weight	Case Dimensions
#502	6	12.03	57.00 x 11.88 x 7.00
#1335	6	15.40	57.25 x 7.25 x 11.88

**#499  
Value Upright Broom**



- 10" wide broom with 54" total height.
- 3/4" diameter steel handle with handle grip and hanger hole.
- 4.25" long staple-set, flagged fibers.
- Solid, one-piece resin block.
- Firm but flexible long-lasting fibers, made with recycled PET.
- Excellent cost-effective option for all multi-surface applications, including hotels.

Case Pack	Case Weight	Case Dimensions
6	7.47	54.50 x 12.00 x 3.50

**#1140  
Housekeeper Smooth Sweep Broom**



- Solid polypropylene 11" wide molded broom block with a 13" sweep.
- 2.25" long staple-set flagged fibers.
- Firm but flexible long-lasting fibers, made with recycled PET.
- 3/4" diameter steel handle with handle grip and hanger hole.
- 7 rows of flagged bristles catch even the small dirt particles the first time.
- Excellent for all housekeeping needs.

Case Pack	Case Weight	Case Dimensions
4	6.84	55.50 x 13.25 x 6.50

**#201**  
**Precision Angle® Broom**



- 11" wide broom with 53" total height.
- 3/4" diameter steel handle with handle grip and hanger hole.
- 5" long staple-set, flagged fibers.
- Solid, one-piece resin block.
- Firm but flexible long-lasting fibers, made with recycled PET.
- Excellent cost-effective option for all multi-surface applications.

Case Pack	Case Weight	Case Dimensions
6	8.32	53.25 x 11.63 x 3.75

**#206**  
**Precision Angle® Broom with Dust Pan**



- 11" wide broom with 53" total height.
- 3/4" diameter steel handle with handle grip and hanger hole.
- 5" long staple-set, flagged fibers.
- Solid, one-piece resin block.
- Firm but flexible long-lasting fibers, made with recycled PET.
- Includes 10" snap-on dust pan.
- Excellent cost-effective option for all multi-surface applications.

Case Pack	Case Weight	Case Dimensions
4	7.04	53.50 x 11.50 x 3.75

**#205**  
**Large Precision Angle® Broom**



- 13" wide angle broom with 54" total height.
- 3/4" diameter steel handle with handle grip and hanger hole.
- 6" long staple-set, flagged fibers.
- Solid, one-piece resin block.
- Firm but flexible long-lasting fibers, made with recycled PET.
- Excellent cost-effective option for all multi-surface applications.

Case Pack	Case Weight	Case Dimensions
6	9.85	54.13 x 13.63 x 4.13

**#248**  
**Large Precision Angle® Broom with Dust Pan**



- 13" wide angle broom with 54" total height.
- 3/4" diameter steel handle with handle grip and hanger hole.
- 6" long staple-set, flagged fibers.
- Solid, one-piece resin block.
- Firm but flexible long-lasting fibers, made with recycled PET.
- Includes 13" snap-on dust pan.
- Excellent cost-effective option for all multi-surface applications.

Case Pack	Case Weight	Case Dimensions
4	8.74	55.25 x 13.50 x 5.00

**#211**  
**Extra Large Precision Angle® Broom**



- 15" wide angle broom with 54" total height.
- 1" diameter steel handle with handle grip and hanger hole.
- 6" long staple-set, flagged fibers.
- Solid, one-piece resin block.
- Firm but flexible long-lasting fibers, made with recycled PET.
- Excellent for all multi-surface applications.

Case Pack	Case Weight	Case Dimensions
4	8.46	55.00 x 14.63 x 3.13

**#101**  
**Traditional Corn Broom**



- 11" wide sweeping surface with 53" total height.
- 3/4" diameter steel handle with handle grip and hanger hole.
- 15-ply polymer thread and 4 rows of stitching.
- 100% natural broom corn.
- True weight corn broom.
- Excellent for all light duty indoor or outdoor applications.

Case Pack	Case Weight	Case Dimensions
6	8.59	53.50 x 9.50 x 5.25



**Dust pans are made with extra wall thickness to resist cracking and breaking.**



# Dust Pans & Accessories

**#919**  
**Lobby Dust Pan & Broom Set (Open Lid)**



- 12" wide dust pan. 36" tall when open.
- Combo unit with #915 lobby broom.
- Broom stores inside pan and clips to handle.
- Handle grip has hanger hole.
- Teeth molded into pan to clean out broom bristles.
- Locks in upright position for easy storage.
- Built-in tilt when open allows user to leave open.
- Perfect for all "on-the-move" applications.
- Ships fully assembled.
- Lobby Broom & Dust Pan Handle Clip sold as #1166 (12-pack, 0.65 lbs).
- Lobby Dust Pan (Open Lid) sold by itself as #918 (2-pack, 5.3 lbs).

Case Pack	Case Weight	Case Dimensions
2	7.00	42.00 x 12.00 x 7.50

**#917**  
**Lobby Dust Pan & Broom Set (Closed Lid)**



- 12" wide dust pan. 36" tall when open.
- Combo unit with #915 lobby broom.
- Broom stores inside pan and clips to handle.
- Handle grip has hanger hole.
- Teeth molded into pan to clean out broom bristles.
- Locks in upright position for easy storage.
- Most common in foodservice and hospitality applications as lid hides debris inside.
- Perfect for all "on-the-move" applications.
- Ships fully assembled.
- Lobby Broom & Dust Pan Handle Clip sold as #1166 (12-pack, 0.65 lbs).
- Lobby Dust Pan (Closed Lid) sold by itself as #916 (2-pack, 5.68 lbs).

Case Pack	Case Weight	Case Dimensions
2	7.56	41.75 x 12.00 x 7.50

**#1194**  
**Deluxe Lobby Dust Pan & Broom Set (Open Lid)**



- 12" wide dust pan. 36" tall when open.
- Combo unit with #915 lobby broom.
- Broom stores inside pan and clips to handle.
- Handle grip has hanger hole.
- Teeth molded into pan to clean out broom bristles.
- Locks in upright position for easy storage.
- Built-in tilt when open allows user to leave open.
- Perfect for all "on-the-move" applications.
- Ships fully assembled.
- Lobby Broom & Dust Pan Handle Clip sold as #1166 (12-pack, 0.65 lbs).
- Extra feature: rubber lip for better floor seal.

Case Pack	Case Weight	Case Dimensions
2	7.08	42.00 x 12.00 x 7.50

**#1193**  
**Deluxe Lobby Dust Pan & Broom Set (Closed Lid)**



- 12" wide dust pan. 36" tall when open.
- Combo unit with #915 lobby broom.
- Broom stores inside pan and clips to handle.
- Handle grip has hanger hole.
- Teeth molded into pan to clean out broom bristles.
- Locks in upright position for easy storage.
- Most common in foodservice and hospitality applications as lid hides debris inside.
- Perfect for all "on-the-move" applications.
- Ships fully assembled.
- Lobby Broom & Dust Pan Handle Clip sold as #1166 (12-pack, 0.65 lbs).
- Extra feature: rubber lip for better floor seal.

Case Pack	Case Weight	Case Dimensions
2	7.64	41.75 x 12.00 x 7.50

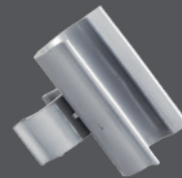
**#915 Lobby Broom**  
**#1086 Stiff Sweep Lobby Broom**



- 10" wide broom with 38" total height.
- 3/4" diameter steel handle with handle grip and hanger hole.
- 4.25" long staple-set, flagged fibers.
- Solid, one-piece resin block.
- Stiffer and wider than most lobby brooms.
- Excellent for quick pick-ups in retail locations, parking lots, and more.
- Stiff sweep lobby broom (unflagged bristles) available as #1086 (6-pack, 6.28 lbs).
- Lobby pan clip sold as #1166 (12-pack, 0.65 lbs).

Case Pack	Case Weight	Case Dimensions
6	6.28	41.75 x 11.00 x 4.25

**#1166**  
**Lobby Dust Pan & Broom Handle Clip**



- Handle clip replacement for all lobby pans and sets.
- Solid, polypropylene injection molded.
- One side fits 1" diameter handle, and one side fits 3/4" diameter handle.

Case Pack	Case Weight	Case Dimensions
12	0.65	11.60 x 7.90 x 2.50



Libman dust pans are molded with special formulas of polypropylene to create impact-resistant pans.

**#929**  
**22" XL Scoop Dust Pan**



- 22" wide scoop. Oversized, 5.5" deep well.
- 33.5" telescopic steel handle.
- Hanger hole for storage.
- Durable hard resin design.
- Great for industrial/warehouse/shop and construction clean-up.

Case Pack	Case Weight	Case Dimensions
3	8.92	23.25 x 22.50 x 8.50

**#1168**  
**16" Large Scoop Dust Pan**



- 16" wide dust pan fits all angle brooms.
- 1" diameter steel handle with ergonomic handle grip, thumbrest, and hanger hole.
- Handle grip is angled for easier carrying – less stress on wrists.
- 3" long molded teeth to clean out broom bristles.
- Thick polypropylene mold for heavy-duty use. Rubber lip for better floor seal.
- Automatically tilts backwards while carrying to hold debris.
- Locks/unlocks in upright/open position.
- Quick pick-ups of larger debris and garbage in parking lots, theme parks, construction/landscaping sites, and more.

Case Pack	Case Weight	Case Dimensions
2	8.75	39.50 x 16.50 x 9.50

**#581**  
**17" Industrial Grade Dust Pan**



- Super durable polypropylene molded.
- 17" wide scoop.
- Hanger hole for easy storage.
- Safer, 3x stronger, and more environmentally friendly than steel/aluminum dust pans.
- Withstands more than 530 lbs; reinforced to maintain shape; will not crack.
- 2.5" deep well.
- Molded "teeth" remove debris from broom fibers.

Case Pack	Case Weight	Case Dimensions
6	11.86	18.10 x 18.40 x 18.40

**#928**  
**13" Dust Pan - Black**



- 13" wide scoop.
- Snaps onto 1" diameter Libman handles.
- Hanger hole for easy storage.
- Black polymer pan.
- 2" deep well.
- Rubber lip for better floor seal.

Case Pack	Case Weight	Case Dimensions
12	6.08	13.60 x 13.40 x 15.30

**#911**  
**13" Deep Well Dust Pan - Red**



- 13" wide scoop.
- Snaps onto 3/4" diameter Libman handles.
- Hanger hole for easy storage.
- Red polymer pan.
- 4" deep well.

Case Pack	Case Weight	Case Dimensions
6	4.11	16.10 x 13.80 x 8.00

**#238**  
**13" Deep Well Dust Pan - Green**



- 13" wide scoop.
- Snaps onto 3/4" diameter Libman handles.
- Hanger hole for easy storage.
- Green polymer pan.
- 4" deep well.

Case Pack	Case Weight	Case Dimensions
6	3.66	16.30 x 13.80 x 8.00

Libman's step-on dust pans make cleaning easier and more efficient by limiting continuous bending and stooping.



**#228**  
**10" Deep Well Dust Pan**



- 10" wide scoop.
- Snaps onto all Libman handles.
- Hanger hole for easy storage.
- White polymer pan.
- 3" oversized deep well that holds more debris.

Case Pack	Case Weight	Case Dimensions
12	5.96	10.90 x 11.80 x 15.90

**#229**  
**10" Dust Pan**



- 10" wide scoop.
- Ribbed handle grip.
- Snaps onto 3/4" diameter Libman handles.
- Hanger hole for easy storage.
- White polymer pan.
- 1.75" deep well.

Case Pack	Case Weight	Case Dimensions
12	4.00	11.80 x 11.10 x 13.90

**#1150**  
**9" Step-On Dust Pan**



- 9" wide scoop; sanoprene rubber lip creates floor seal making debris cleanup easier.
- Teeth molded into dust pan removes debris from broom fibers.
- Foothold, with sanoprene molded rubber around foothold, promotes easy sweeping and scooping without bending over.
- Snaps onto 3/4" diameter Libman handles.
- Hanger hole for easy storage.
- 3.25" deep well.

Case Pack	Case Weight	Case Dimensions
4	2.74	13.75 x 10.25 x 8.50

**#2125**  
**12" Step-On Dust Pan**



- 12" wide scoop; sanoprene rubber lip creates floor seal making debris cleanup easier.
- Teeth molded into dust pan removes debris from broom fibers.
- Foothold, with sanoprene molded rubber around foothold, promotes easy sweeping and scooping without bending over.
- Snaps onto 1" diameter Libman handles.
- Hanger hole for easy storage.
- 4.25" deep well.

Case Pack	Case Weight	Case Dimensions
4	5.10	18.25 x 13.50 x 11.00

**#2126**  
**16" Step-On Dust Pan**



- 16" wide scoop; sanoprene rubber lip creates floor seal making debris cleanup easier.
- Teeth molded into dust pan removes debris from broom fibers.
- Foothold, with sanoprene molded rubber around foothold, promotes easy sweeping and scooping without bending over.
- Snaps onto 1" diameter Libman handles.
- Hanger hole for easy storage.
- 4.25" deep well.

Case Pack	Case Weight	Case Dimensions
4	6.56	18.00 x 10.75 x 18.75



**#1168 Large Scoop Dust Pan**



**Libman brush & whisk sets are key to any maintenance kit or cart.**

**#906 - Red  
Dust Pan with Whisk Broom**



- 10" dust pan together with item #907.
- 42 tufts of flexible, split-tip polymer fibers made with recycled PET, pick up fine particles.
- Ergonomic handle.
- Hanger hole for easy storage.
- Whisk broom snaps into dust pan.
- 2.25" deep well.
- Excellent for quick pick ups.

Case Pack	Case Weight	Case Dimensions
6	3.98	11.50 x 10.50 x 12.75

**#1031 - White  
Dust Pan with Whisk Broom**



- 10" dust pan together with item #1030.
- 42 tufts of flexible, split-tip polymer fibers made with recycled PET, pick up fine particles.
- Ergonomic handle.
- Hanger hole for easy storage.
- Whisk broom snaps into dust pan.
- 2.25" deep well.
- Excellent for quick pick ups.

Case Pack	Case Weight	Case Dimensions
6	3.98	11.50 x 10.50 x 12.75

**#907 Whisk Broom - Red  
#1030 Whisk Broom - White**



#907



#1030

- 7" wide sweeping surface.
- 42 tufts of flexible, split-tip polymer fibers made with recycled PET, pick up fine particles.
- Ergonomic handle.
- Hanger hole for easy storage.
- Excellent for sweeping up dust and other fine particles.

Case Pack	Case Weight	Case Dimensions
6	2.53	11.00 x 6.50 x 7.60

**#95  
Dust Pan and Brush Set**



- 9.5" dust pan together with #231.
- 2.5" x 7" oval head for getting into corners.
- 96 tufts of flexible, split-tip 2" polymer fibers made with recycled PET, pick up fine particles.
- Ergonomic rubbergrip handle.
- Hanger hole for easy storage.
- Brush snaps into dust pan.
- Teeth on dust pan allow hands-free brush cleaning.
- Excellent for quick pick ups.
- 1.75" deep well.

Case Pack	Case Weight	Case Dimensions
2	2.62	19.50 x 10.20 x 6.00

**#526  
Counter/Bench Brush - Red**



- 2.5" x 7" oval head for getting into corners.
- 96 tufts of flexible, split-tip 2" polymer fibers made with recycled PET, pick up fine particles.
- Ergonomic rubbergrip handle.
- Hanger hole for easy storage.
- Excellent for sweeping up dust and other fine particles.


Case Pack	Case Weight	Case Dimensions
6	2.67	13.40 x 6.90 x 5.80

**#231  
Counter/Bench Brush - White**



- 2.5" x 7" oval head for getting into corners.
- 96 tufts of flexible, split-tip 2" polymer fibers made with recycled PET, pick up fine particles.
- Ergonomic rubbergrip handle.
- Hanger hole for easy storage.
- Excellent for sweeping up dust and other fine particles.

Case Pack	Case Weight	Case Dimensions
6	2.67	13.40 x 6.90 x 5.80



One of the most extensive offerings of push brooms on the market - serving all end-use sweeping needs.



# Push Brooms



Libman's unique locking bolt feature prevents broom head from spinning during use.

**#805**  
**24" Multi-Surface Push Broom**



- 24" polymer broom block for durability and hygiene.
- 1" x 60" long steel, nylon thread handle with 5" handgrip, hanger hole and locking bolt.
- 3" long staple-set flagged fibers.
- Firm but flexible long-lasting fibers made with recycled PET.
- Resin bolt locks handle in place.
- Set includes broom head and handle.
- Clamp handle version available as #1189 (4-pack, 13.80 lbs)
- Excellent for all multi-surface applications.

Case Pack	Case Weight	Case Dimensions
4	14.40	59.63 x 7.25 x 6.50

**#804**  
**18" Multi-Surface Push Broom**



- 18" polymer broom block for durability and hygiene.
- 1" x 60" long steel, nylon thread handle with 5" handgrip, hanger hole and locking bolt.
- 3" long staple-set flagged fibers.
- Firm but flexible long-lasting fibers made with recycled PET.
- Resin bolt locks handle in place.
- Set includes broom head and handle.
- Excellent for all multi-surface applications.

Case Pack	Case Weight	Case Dimensions
4	12.52	59.50 x 7.25 x 6.50

**#879**  
**24" Rough Surface Push Broom - Clamp-Style**



- 24" polymer broom block for durability and hygiene.
- 1" x 60" long steel handle with 5" handgrip and hanger hole.
- 4" long staple-set fibers are not flagged.
- Firm but flexible long-lasting fibers made with recycled PET.
- Durable clamp with nut and bolt fastener.
- Set includes broom head and handle.
- Excellent for all rough outdoor, non-slip/non-skid, and textured/varied surfaces.

Case Pack	Case Weight	Case Dimensions
4	15.54	59.50 x 7.88 x 7.50

**#878**  
**18" Rough Surface Push Broom**



- 18" polymer broom block for durability and hygiene.
- 1" x 60" long steel, nylon thread handle with 5" handgrip, hanger hole and locking bolt.
- 4" long staple-set fibers are not flagged.
- Firm but flexible long-lasting fibers made with recycled PET.
- Resin bolt locks handle in place.
- Set includes broom head and handle.
- Excellent for all rough outdoor, non-slip/non-skid, and textured/varied surfaces.

Case Pack	Case Weight	Case Dimensions
4	13.23	59.50 x 7.88 x 7.50

**#801**  
**24" Smooth Surface Push Broom**



- 24" polymer broom block for durability and hygiene.
- 1" x 60" long steel, nylon thread handle with 5" handgrip, hanger hole and locking bolt.
- 3" long, soft staple-set flagged fibers.
- Firm but flexible long-lasting fibers made with recycled PET.
- Resin bolt locks handle in place.
- Set includes broom head and handle.
- Excellent for smooth concrete floors in warehouses and factories.

Case Pack	Case Weight	Case Dimensions
4	14.50	59.50 x 7.25 x 6.50

**#800**  
**18" Smooth Surface Push Broom**



- 18" polymer broom block for durability and hygiene.
- 1" x 60" long steel, nylon thread handle with 5" handgrip, hanger hole and locking bolt.
- 3" long, soft staple-set flagged fibers.
- Firm but flexible long-lasting fibers made with recycled PET.
- Resin bolt locks handle in place.
- Set includes broom head and handle.
- Excellent for smooth concrete floors in warehouses and factories.

Case Pack	Case Weight	Case Dimensions
4	12.38	59.50 x 7.25 x 6.50

Libman heavy-duty assembled push brooms are made in the USA with proprietary heavy-duty resin brackets that provide extra leverage and durability.



**#823**  
**24" Multi-Surface Heavy-Duty Push Broom**



- 24" polymer broom block for durability and hygiene.
- 1" x 60" long steel, nylon thread handle with 5" handgrip and hanger hole.
- 3" long staple-set flagged fibers.
- Firm but flexible long-lasting fibers made with recycled PET.
- Super tough polymer brace won't rust or bend.
- Set includes broom head, brace, and handle.
- Excellent for large amounts of debris on all surfaces except very rough surfaces.

Case Pack	Case Weight	Case Dimensions
4	14.53	69.00 x 24.38 x 12.00

**#1230**  
**24" Multi-Surface Squeegee Push Broom**



- 24" polymer broom block for durability and hygiene with integrated synthetic squeegee blade.
- 1" x 60" long steel, nylon thread handle with 5" handgrip and hanger hole.
- 3" long staple-set flagged fibers.
- Firm but flexible long-lasting fibers made with recycled PET.
- Super tough polymer brace won't rust or bend.
- Set includes broom head, brace, and handle.
- Convenient 2-in-1 tool for pushing liquid or debris on multiple surfaces.

Case Pack	Case Weight	Case Dimensions
4	15.50	68.00 x 24.50 x 14.75

**#825**  
**24" Rough Surface Heavy-Duty Push Broom**



- 24" polymer broom block for durability and hygiene.
- 1" x 60" long steel, nylon thread handle with 5" handgrip and hanger hole.
- 4" long staple-set fibers are not flagged.
- Firm but flexible long-lasting fibers made with recycled PET.
- Super tough polymer brace won't rust or bend.
- Set includes broom head, brace, and handle.
- Excellent for large amounts of debris on rough outdoor, non-slip/non-skid, and textured/varied surfaces.

Case Pack	Case Weight	Case Dimensions
4	16.88	69.25 x 24.63 x 12.50



**#823 24" Multi-Surface Heavy-Duty Push Broom**

**#850**  
**36" Smooth Surface Heavy-Duty Push Broom**



- 36" natural hardwood broom block.
- 1" x 60" long steel, nylon thread handle with 5" handgrip and hanger hole.
- 3" long, soft staple-set flagged fibers.
- Firm but flexible long-lasting fibers made with recycled PET.
- Super tough polymer brace won't rust or bend.
- Flagged fibers pick up fine dirt & dust.
- Set includes broom head, brace, and handle.
- Excellent for large spaces, such as warehouse and factory floors.

Case Pack	Case Weight	Case Dimensions
4	19.94	36.50 x 12.50 x 70.00

**#1101**  
**36" Multi-Surface Heavy-Duty Push Broom**



- 36" natural hardwood broom block.
- 1" x 60" long steel, nylon thread handle with 5" handgrip and hanger hole.
- 3" long staple-set flagged fibers.
- Firm but flexible long-lasting fibers made with recycled PET.
- Super tough polymer brace won't rust or bend.
- Flagged fibers pick up all particle types.
- Set includes broom head, brace, and handle.
- Excellent for large spaces, including all surface types.

Case Pack	Case Weight	Case Dimensions
4	19.26	37.00 x 12.75 x 70.00



**Libman push brooms provide superior sweeping performance due to maximum fiber fill quantity.**

**#1292  
24" Multi-Surface Industrial Push Broom**



- 24" polymer broom block for durability and hygiene.
- 1 1/8" x 61" long wood handle and 66" overall length.
- 4" long staple-set flagged fibers.
- Firm but flexible long-lasting fibers made with recycled PET.
- Super tough polymer brace won't rust or bend.
- 5" handgrip and hanger hole.
- Set includes broom head, brace, and handle.
- Excellent for large amounts of debris on all surfaces except very rough surfaces.

Case Pack	Case Weight	Case Dimensions
4	19.96	73.50 x 24.63 x 13.25



**#1292 24" Multi-Surface Industrial Push Broom**

**#1293  
24" Rough Surface Industrial Push Broom**



- 24" polymer broom block for durability and hygiene.
- 1 1/8" x 61" long wood handle and 66" overall length.
- 4" long staple-set fibers are not flagged.
- Firm but flexible long-lasting fibers made with recycled PET.
- Super tough polymer brace won't rust or bend.
- 5" handgrip and hanger hole.
- Set includes broom head, brace, and handle.
- Excellent for large amounts of debris on rough outdoor, non-slip/non-skid, and textured/varied surfaces.

Case Pack	Case Weight	Case Dimensions
4	19.70	73.50 x 24.63 x 12.63



**#1293 24" Rough Surface Industrial Push Broom**

**#1294  
24" Smooth Surface Industrial Push Broom**




- 24" polymer broom block for durability and hygiene.
- 1 1/8" x 61" long wood handle and 65" overall length.
- 3" long, soft staple-set flagged fibers.
- Firm but flexible long-lasting fibers made with recycled PET.
- Super tough polymer brace won't rust or bend.
- 5" handgrip and hanger hole.
- Set includes broom head, brace, and handle.
- Industrial grade option for light debris and dust on all smooth floor surfaces.

Case Pack	Case Weight	Case Dimensions
4	19.14	72.50 x 24.75 x 13.00



**#1294 24" Smooth Surface Industrial Push Broom**

A close-up photograph of a person's hand holding a green-handled Libman toilet brush. The brush has a white shaft and a circular head with green bristles. The brush is being used to clean the inside of a white toilet bowl. In the background, a white toilet seat and a white container are visible.

**Stiff, recycled PET bristles are better for scrubbing and hold their shape longer than other materials.**



# Brushes/Scrubs



Libman manufactures and assembles steel handles, extruded fibers, and injection-molded parts all in the U.S.A. from raw material to finished good.

### #547 Floor Scrub



- 10.5" x 3.5" scrubbing surface.
- 3/4" diameter steel handle with handle grip and hanger hole.
- 1.5" long, recycled PET fibers, 10" wide scraper.
- Total height of 52".
- Stiff unflagged fibers remove debris from cracks and rough surfaces.
- #603 (48"), #601 (60", red), #1165 (60", black) are the replacement handles (pg.49).
- Available head only as #507 (6-pack, 5.16 lbs).

Case Pack	Case Weight	Case Dimensions
6	9.05	60.50 x 6.00 x 4.00

### #532 Dual-Surface Scrub Brush



- 10" x 6.5" dual-sided scrubbing surface.
- 1" diameter steel handle with handle grip and hanger hole.
- 2.5" long, recycled, unflagged PET fibers.
- Total height of 60".
- Great for all scrubbing applications including grout cleaning.
- Available head only as #516 (6-pack, 9.31 lbs).
- Softer, wash brush head available as #535 (pg. 46).
- Libman #601 (Red) or #1165 (Black) are the replacement handles (pg. 49).

Case Pack	Case Weight	Case Dimensions
6	15.55	59.50 x 14.50 x 10.00

### #548 Acid Resistant Floor Scrub



- 8.5" x 3.5" scrubbing surface.
- 3/4" diameter steel handle with handle grip and hanger hole.
- 1" long, natural tampico fibers, 8" wide scraper.
- Total height of 52".
- Flat head removes water and dirt out of cracks and rough surfaces.
- Withstands harsh chemicals, strippers and acids.
- #603 (48"), #601 (60", red), #1165 (60", black) are the replacement handles (pg.49).

Case Pack	Case Weight	Case Dimensions
6	8.27	49.50 x 6.13 x 3.88

### #549 Roofing Brush



- 8.5" x 3.5" scrubbing surface.
- 3/4" diameter steel handle with handle grip and hanger hole.
- 1.5" long, natural tampico fibers, 8" wide scraper.
- Total height of 52".
- Withstands harsh chemicals, strippers and acids.
- Applies roofing compounds, water-proofing materials, adhesives, finishes to masonry walls, and finishes to roofs and buildings.
- #603 (48"), #601 (60", red), #1165 (60", black) are the replacement handles (pg.49).

Case Pack	Case Weight	Case Dimensions
6	8.12	49.50 x 6.13 x 3.88

### #122 No Knees Floor Scrub



- 11" x 4" scrubbing surface with an angled head to get into corners.
- 3/4" diameter steel handle with handle grip and hanger hole.
- 10.5" long x 3" wide head with 1.25" long, recycled PET fibers.
- Tough scrubber attached to handle allows for floor scrubbing without bending over.
- Head pivots 180°.
- Excellent for bathrooms, kitchens, and other spaces requiring tough scrubbing.

Case Pack	Case Weight	Case Dimensions
4	6.32	54.75 x 7.13 x 5.13

### #1259 Wall/Floor Scrubber with Extendable Handle



- Ergonomic, swivel hanger tip for easy storage.
- Sturdy, polypropylene molded components.
- Thick scouring pad attaches to frame conveniently with a hook-and-loop attachment.
- 360° pivoting head reaches tough spots easily.
- Steel handle extends and contracts from 52" to 33.5" total length.
- Pad: 10.75" x 5.25" x 1".
- Replacement pads available as a 2-pack unit as #1260 (4-pack, 1.35 lbs).
- Remove grout and grime from bathroom tile, shower/bathtub walls and basins, and hard-to-reach areas behind toilets.

Case Pack	Case Weight	Case Dimensions
4	5.90	48.00 x 7.50 x 5.50

**#57  
Power Scrub Brush**



- 7" x 2.5" scrubbing surface with pointed end for corners.
- 95 tufts of 1" long, recycled PET, staple-set fibers.
- Comfortable contoured grip handle with easy-grip open end and hanger hole.
- Fibers are not flagged to withstand heavier debris and varied surfaces.

Case Pack	Case Weight	Case Dimensions
6	2.62	13.50 x 7.13 x 4.00

**#15  
Small Scrub Brush**



- 1.75" x 4.5" scrubbing surface.
- 110 tufts of extra durable, 3/4" recycled PET, staple-set fibers.
- Pointed head for getting into corners.
- Ergonomic rubbergrip handle with thumb rest and hanger hole.
- Great for spot clean-ups.
- Fibers are not flagged to withstand heavier debris and varied surfaces.

Case Pack	Case Weight	Case Dimensions
6	1.75	9.75 x 5.25 x 4.50

**#567  
Big Scrub Brush - Red**



- 8" x 3.5" pointed scrubbing surface.
- 164 tufts of 1.25" long, recycled PET, staple-set fibers.
- Ergonomic grip with extra knuckle room and hanger hole.
- Fibers are not flagged to withstand heavier debris and varied surfaces.

Case Pack	Case Weight	Case Dimensions
4	2.93	9.80 x 8.90 x 5.00

**#1090  
Big Scrub Brush - White**



- 8" x 3.5" pointed scrubbing surface.
- 164 tufts of 1.25" long, recycled PET, staple-set fibers.
- Ergonomic grip with extra knuckle room and hanger hole.
- Fibers are not flagged to withstand heavier debris and varied surfaces.

Case Pack	Case Weight	Case Dimensions
4	2.93	9.80 x 8.90 x 5.00

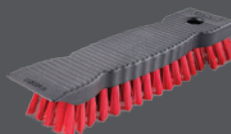
**#510  
7" Scrub Brush**



- 2" x 7" scrubbing surface.
- 65 tufts of 1" long, recycled PET, staple-set fibers.
- 2.5" wide scraper.
- Resin block shaped and grooved for easy gripping.
- Fibers are not flagged to withstand heavier debris and varied surfaces.

Case Pack	Case Weight	Case Dimensions
6	2.75	8.50 x 8.00 x 4.25

**#513  
9" Scrub Brush**



- 2" x 9" scrubbing surface.
- 86 tufts of 1.25" long, recycled PET, staple-set fibers.
- 2.5" wide scraper.
- Resin block shaped and grooved for easy gripping.
- Fibers are not flagged to withstand heavier debris and varied surfaces.

Case Pack	Case Weight	Case Dimensions
6	3.09	15.20 x 10.80 x 2.00

**#18  
Tile & Grout Brush**



- .56" x 3.5" scrubbing surface.
- 33 tufts of extra durable, 7/8" recycled PET, staple-set fibers.
- Angled head for getting into tight spaces.
- Narrow brush design, excellent for grout.
- Ergonomic rubbergrip handle with thumb rest and hanger hole.

Case Pack	Case Weight	Case Dimensions
6	1.02	10.10 x 10.20 x 1.30

**#1353  
Dual Sided Tile & Grout Brush**



- Narrow grout brush on one side with wider, all-purpose scrub brush on the other.
- 4" x 5" scrubbing surface on all-purpose side, 2.25" x 1.25" scrubbing surface on narrow side.
- Extra durable, stiff, recycled PET, staple-set fibers.
- Angled head for getting into tight spaces.
- Ergonomic rubbergrip handle with thumb rest and hanger hole.
- Great multi-purpose tool for cleaning grout in narrow spaces and scrubbing tile in bathrooms and showers.

Case Pack	Case Weight	Case Dimensions
6	1.85	11.75 x 11.75 x 2.50

**#1161  
Tile & Tub Scrub**



- 5.75" x 3.5" non-woven, abrasive pad.
- Ergonomic rubbergrip handle with thumb rest and hanger hole.
- Excellent for tough bathroom cleaning.
- Integrated polypropylene scraper.
- Replacement pads available as a 2-pack unit as #1151 (6-pack, 1.00 lbs).

Case Pack	Case Weight	Case Dimensions
6	1.90	12.75 x 6.75 x 6.00

**#525 Iron Handle Scrub Brush - Red  
#16 Iron Handle Scrub Brush - White**



#525

- 2.75" x 7.5" scrubbing surface.
- 117 tufts of extra durable, 1" recycled PET, staple-set fibers.
- 1.38" wide scraper edge to remove stuck-on debris.
- Ergonomic rubbergrip handle with thumb rest and hanger hole.



#16

Case Pack	Case Weight	Case Dimensions
6	3.06	11.90 x 8.30 x 5.20

**#524 Short Handle Utility Brush - Red  
#54 Short Handle Utility Brush - White**



#524

- 3.25" x 3.5" scrubbing surface.
- 68 tufts of extra durable 1.5" long, recycled PET, staple-set fibers.
- 2.5" wide scraper edge for tough cleaning.
- Ergonomic rubbergrip handle with thumb rest and hanger hole.



#54

Case Pack	Case Weight	Case Dimensions
6	2.08	12.50 x 11.60 x 3.70

**#522 Long Handle Utility Brush - Red  
#10 Long Handle Utility Brush - White**



#522

- 3.75" x 5" scrubbing surface.
- #522: 2" long, recycled PET staple-set fibers.
- #10: 1.5" long, recycled PET staple-set fibers.
- 52 tufts of 2" long, recycled PET, staple-set fibers.
- 17.5" long, grooved polymer handle with hanger hook.
- 2.75" wide scraper.
- Ergonomic rubbergrip handle with thumb rest and hanger hole.



#10

Case Pack	Case Weight	Case Dimensions
6	3.74	19.60 x 11.50 x 3.80

**#22  
Round Bowl Brush**



- 103 tufts of extra durable, 1" long, recycled PET, staple-set fibers.
- 14" total length with full "U" shape fiber placement to reach deep under rim.
- Ergonomic rubbergrip handle with thumb rest and hanger hole.
- Brush also sold as part of set #40 and #34, with caddy.

Case Pack	Case Weight	Case Dimensions
6	2.06	14.80 x 10.90 x 3.60

**#1020  
Angled Toilet Bowl & Urinal Brush**



- 100 tufts of extra durable, 1" long, recycled PET, staple-set fibers.
- 16" total length with contoured grip handle.
- Full "U" shape fiber placement, 3.25" wide head.
- Angled handle to easily reach under rim.
- Ergonomic rubbergrip handle with thumb rest and hanger hole.
- Brush also sold as part of set #1022, with caddy.

Case Pack	Case Weight	Case Dimensions
6	2.83	16.60 x 12.10 x 4.10

**#34  
Round Bowl Brush & Open Caddy**



- 103 tufts of extra durable, 1" long, recycled PET, staple-set fibers.
- 15" total height.
- 5.5" x 5.5" caddy.
- Extra sturdy polypropylene molded base will not tip over.
- Contains #22 Round Bowl Brush.
- Compact size to fit into tight spaces.

Case Pack	Case Weight	Case Dimensions
4	2.37	15.80 x 11.00 x 6.00

**#1022  
Angled Toilet & Urinal Brush & Caddy**



- 100 tufts of extra durable, 1" long, recycled PET, staple-set fibers.
- 17" total height.
- 4.75" x 7" caddy.
- Extra sturdy polypropylene molded base will not tip over.
- Air slits for faster drying.
- Contains #1020 Angled Toilet Bowl Brush.
- Enclosed caddy hides brush – great for foodservice and hospitality environments.

Case Pack	Case Weight	Case Dimensions
4	4.11	17.70 x 11.60 x 7.20

**#40  
Round Bowl Brush & Closed Caddy**



- 103 tufts of extra durable, 1" long, recycled PET, staple-set fibers.
- 14.5" total height.
- 4.5" x 5.5" caddy.
- Extra sturdy polypropylene molded base will not tip over.
- Air slits for faster drying.
- Contains #22 Round Bowl Brush.
- Enclosed caddy hides brush – great for foodservice and hospitality environments.

Case Pack	Case Weight	Case Dimensions
4	3.14	15.10 x 11.80 x 5.90



**#40 Round Bowl Brush & Caddy**

**#24****Traditional Bowl Brush**

- 2" long, extra durable recycled PET fibers twisted in rust-resistant wire.
- 11" long handle, 16.25" total length.
- Ergonomic rubbergrip handle with thumb rest and hanger hole.

Case Pack	Case Weight	Case Dimensions
12	3.73	18.60 x 14.80 x 6.00

**#27****Traditional Bowl Brush & Caddy**

- 2" long, extra durable recycled PET fibers twisted in rust-resistant wire.
- 15" total height with brush in caddy.
- 8" tall x 6.25" wide polypropylene caddy base will not tip over.
- Brush sits in caddy at an open angle, allowing faster drying.

Case Pack	Case Weight	Case Dimensions
4	2.79	17.30 x 12.60 x 7.70

**#597****Premium Toilet Plunger**

- Extra durable thermoplastic rubber base.
- Extra long flange creates maximum suction performance.
- 24" total height.
- 1" diameter steel handle with handle grip and hanger hole.

Case Pack	Case Weight	Case Dimensions
4	3.60	23.75 x 12.25 x 6.00

**#598****Premium Toilet Plunger & Caddy**

- Extra durable thermoplastic rubber base.
- Extra long flange creates maximum suction performance.
- 24" total height.
- Caddy designed to hide plunger to allow storage next to toilet.
- 1" diameter steel handle with handle grip and hanger hole.
- Contains #597 Premium Toilet Plunger.
- Perfect for hospitality and foodservice environments.


Case Pack	Case Weight	Case Dimensions
4	5.55	24.00 x 13.75 x 7.75

**#1024****Toilet Brush & Plunger Combo**

- Heavy-duty polypropylene injection molded caddy.
- One of a kind caddy hides the plunger, allowing for storage next to the toilet.
- Ventilation holes let bowl brush dry faster.
- 24" total height of plunger & caddy.
- Plunger has 1" diameter steel handle with handle grip and hanger hole.
- Toilet brush has ergonomic rubbergrip handle with thumb rest and hanger hole.
- Plunger #597 & Toilet Brush #22 included.
- Perfect for hospitality and foodservice environments.

Case Pack	Case Weight	Case Dimensions
2	3.86	12.75 x 8.00 x 23.75

**#1024 Toilet Brush & Plunger Combo**



Libman's high quality mops,  
buckets, and floor cleaners  
eliminate dust, dirt, and  
allergens.



# Mops & Buckets



A key to Libman's success is our tremendous quality control and reputation amongst commercial end-users.

**#1228  
Heavy Duty Wonder® Mop with Scrub Brush**



- 10" long durable, cut-end strips.
- 1" x 51 1/2" steel handle with handle grip and hanger hole.
- Non-woven, premium synthetic material with microfiber GRIPSTRIPS™ to lift more dirt. Machine washable up to 50 times.
- Easy release mop head.
- Light weight mop, 1.05 lbs. when wet. Contains 45% more strips than the #2000 Wonder® Mop.
- Polypropylene molded wringer cup and grip.
- 4" wide removable scrub brush for tough spots.
- Refill #1229 (4-pack, 1.70 lbs).
- Excellent for room-to-room cleaning, smaller floor areas, housekeeping, residential contract cleaners, and office breakroom supply.

Case Pack	Case Weight	Case Dimensions
4	7.00	64.25 x 12.00 x 4.50

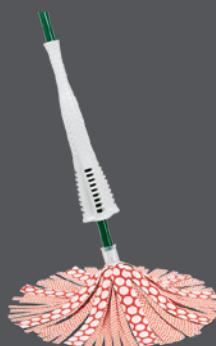
**#988  
Big Tornado Mop®**



- 80% synthetic yarn resists bacterial odor. 3 red bands prevent tangling.
- 3/4" diameter steel handle with handle grip and hanger hole; 54.5" total height.
- Quick release clip for easy mop head change, mop head is machine washable.
- Light weight mop head, less than 2.25 lbs when wet. Twist wring mechanism.
- Refill #989 (6-pack, 4.45 lbs).
- Large, #16 mop head covers more surface area than #2030.
- Excellent for room-to-room cleaning, smaller floor areas, housekeeping, residential cleaners, and office breakroom supply.

Case Pack	Case Weight	Case Dimensions
4	7.24	56.00 x 7.25 x 4.25

**#2000  
Wonder® Mop**



- 10" long durable, cut-end strips.
- 3/4" x 50 1/2" steel handle with handle grip and hanger hole.
- Non-woven strips, premium synthetic material with microfiber GRIPSTRIPS™ to lift more dirt. Machine washable up to 50 times.
- Easy release mop head.
- Light weight mop head, 0.70 lbs. when wet.
- Polypropylene molded wringer cup and grip.
- Refill #2001 (6-pack, 1.70 lbs.).
- Excellent for room-to-room cleaning, smaller floor areas, housekeeping, residential cleaners, and office breakroom supply.

Case Pack	Case Weight	Case Dimensions
4	5.22	62.50 x 8.13 x 3.38

**#2030  
Tornado Mop®**



- 80% synthetic yarn resists bacterial odor. 3 green bands prevent tangling.
- 3/4" steel handle with handle grip and hanger hole; 54.5" total height.
- Quick release clip for easy mop head change, mop head is machine washable.
- Light weight mop head, less than 2.25 lbs. when wet. Twist wring mechanism.
- Refill #2031 (4-pack, 2.79 lbs.).
- #12 mop head.
- Excellent for room-to-room cleaning, smaller floor areas, housekeeping, residential cleaners, and office breakroom supply.

Case Pack	Case Weight	Case Dimensions
4	6.84	56.25 x 6.75 x 4.25

**#2001 Wonder® Mop Refill  
#2031 Tornado Mop® Refill**



#2000

- Replacement head for #2000 Wonder® Mop.
- 10" long durable, cut-end strips.
- Non-woven strips, premium synthetic material with microfiber GRIPSTRIPS™ to lift more dirt. Machine washable up to 50 times.
- Easy release mop head.

Case Pack	Case Weight	Case Dimensions
6	1.70	11.13 x 8.50 x 5.50



#2031

- Replacement head for #2030 Tornado Mop®.
- 80% synthetic yarn resists bacterial odor. 3 green bands prevent tangling.
- Machine washable.
- #12 mop head.

Case Pack	Case Weight	Case Dimensions
4	2.79	12.00 x 7.38 x 4.50

**#1283  
Tornado Spin Mop System**



- Convenient all-in-one mopping system.
- Polypropylene corrosion resistant bucket and spinning chamber shoots excess water into bucket.
- Bucket usable capacity is 6.4 quarts of water.
- Push handle down once for damp mop, or more times for a drier mop. Super efficient wringing mechanism.
- Machine washable microfiber head. Refill #1284 (4-pack, 1.6 lbs.).
- Steel handle with impact resistant lower handle composed of fiberglass reinforced nylon.
- Excellent for all smooth hard floors including hardwood.

Case Pack	Case Weight	Case Dimensions
1	5.35	22.75 x 11.75 x 10.25

Libman deck mop sets feature strong polymer yarn connectors and are a great economical cleaning option.



**#121**  
**12 oz. Looped-End Cotton Deck Mop**



- 12 oz., 4-ply, recycled cotton blend yarn with scrub pads on both sides of mop.
- 3/4" diameter steel handle with handle grip and hanger hole.
- Looped-ends with tail band provide more durability and will not tangle.
- Strong polymer yarn connector.
- Threaded, replaceable red handle available (Libman #603).
- Refill #130 (6-pack, 5.6 lbs).
- Deck mop wringer bucket available as #1056 or #2112 on page 24.

Case Pack	Case Weight	Case Dimensions
6	8.63	47.50 x 6.50 x 5.50

**#130**  
**12 oz. Looped-End Cotton Deck Mop Refill**



- Replacement head for #121 Cotton Wet Mop.
- 12 oz., 4-ply, recycled cotton blend yarn with scrub pads on both sides of mop.
- Looped-ends with tail band provide more durability and will not tangle.
- Strong polymer yarn connector.

Case Pack	Case Weight	Case Dimensions
6	5.6	13.88 x 12.50 x 7.25

**#88**  
**8 oz. Cut-End Cotton Deck Mop**



- 8 oz., 4-ply, recycled cotton blend yarn.
- 3/4" diameter steel handle with handle grip and hanger hole.
- Strong polymer yarn connector.
- Threaded, replaceable red handle available (Libman #603).
- Cut-ends offer more economical general cleaning option.
- Refill #90 (6-pack, 3.76 lbs).
- Deck mop wringer bucket available as #1056 or #2112 on page 24.

Case Pack	Case Weight	Case Dimensions
6	7.10	47.50 x 6.25 x 4.25

**#91**  
**12 oz. Cut-End Cotton Deck Mop**



- 12 oz., 4-ply, recycled cotton blend yarn.
- 3/4" diameter steel handle with handle grip and hanger hole.
- Strong polymer yarn connector.
- Threaded, replaceable red handle available (Libman #603).
- Cut-ends offer more economical general cleaning option.
- Deck mop wringer bucket available as #1056 or #2112 on page 24.

Case Pack	Case Weight	Case Dimensions
6	8.60	48.00 x 6.80 x 4.30

**#977**  
**16 oz. Cut-End Cotton Deck Mop**



- 16 oz., 4-ply, recycled cotton blend yarn.
- 3/4" diameter steel handle with handle grip and hanger hole.
- Strong polymer yarn connector.
- Threaded, replaceable red handle available (Libman #603).
- Cut-ends offer more economical general cleaning option.
- Refill #944 (6-pack, 7.04 lbs).
- Deck mop wringer bucket available as #1056 or #2112 on page 24.

Case Pack	Case Weight	Case Dimensions
6	10.28	49.75 x 8.50 x 4.75

**#90 8 oz. Cut-End Cotton Deck Mop Refill**  
**#944 16 oz. Cut-End Cotton Deck Mop Refill**



#90



#944

- 4-ply, recycled cotton blend yarn.
- Strong polymer yarn connector.
- Cut-ends offer more economical general cleaning option.

Item	Case Pack	Case Weight	Case Dimensions
#90	6	3.76	13.90 x 7.80 x 6.20
#944	6	7.04	17.40 x 11.40 x 7.70



Libman mop buckets and handles are molded and manufactured in our Arcola, IL plant, allowing us to deliver consistent quality and durability.

### #933 Mop Bucket & Side-Press Wringer



- 32 quart bucket has a 11.75" x 10.25" opening and is 24" tall, when wringer is inserted. 11.75" x 17.25" opening without wringer.
- Unique wringer panel design that expels more water with less spilling and splashing.
- Heavy duty steel bucket handle with soft rubber grip for easier lifting and pouring.
- Handle lays on either side, out of the way during mopping.
- Non-squeak, non-marking rubber casters come heat-set into bucket. No assembly required.
- Wringer replacement available as #599 (1-pack, 9.01 lbs).
- 1-year warranty.

Case Pack	Case Weight	Case Dimensions
1	17.42	19.90 x 16.60 x 19.50

### #1095 One-Piece Mop Bucket & Wringer Combo



- 32 quart bucket has a 12.25" x 12.5" opening and is 19.25" tall.
- Lighter weight, yet strong design is great for applications requiring bucket mobility.
- Solid polypropylene one-piece molded bucket and wringer.
- Non-squeak, non-marking rubber casters come heat-set into bucket. No assembly required.
- Unique wringer panel design expels more water with less spilling and splashing.
- Convenient polypropylene pour handles for easy lifting and emptying.
- Electrostatic powder coated steel handle with molded, no-slip handle grip.
- 1-year warranty.

Case Pack	Case Weight	Case Dimensions
1	11.86	21.75 x 14.00 x 20.00

### #1369 Two-Sided Caution Wet Floor Sign



- Unique locking tab secures sign in open position to prevent collapse and closed position for storage or transport on carts.
- Heavy-duty polypropylene construction - 90% heavier (on avg.) than comparable signs.
- Bilingual and bright yellow for effective communication.
- OSHA/ANSI compliant text and graphic safety warning on both sides.
- Slightly taller and wider than most comparable signs - more visible to pedestrians.
- Excellent for indoor or outdoor areas with pedestrian traffic.

Case Pack	Case Weight	Case Dimensions
4	11.60	28.00 x 13.75 x 5.25

### #982 Quick-Change Mop Handle



- 1" x 60" long steel, nylon thread handle with 5" handgrip and hanger hole.
- Unique quick-change frame with a quick-release lever.
- More sanitary as hands don't have to touch dirty mop head to change.
- Durable resin construction threaded onto the handle.
- Resin teeth grip mop head inside the frame.
- Hinged head that opens completely to easily remove and add mop heads.
- Traditional style handle easily attaches to any Libman mop head.

Case Pack	Case Weight	Case Dimensions
6	7.36	61.00 x 9.50 x 4.50

### #983 Resin Jaw Mop Handle



- 1" x 60" long steel handle with 5" handgrip and hanger hole.
- Total length of 58.5".
- Resin jaw mop frame spins to tighten and loosen.
- Resin teeth grip mop head.
- Easily clamps onto any Libman mop head.

Case Pack	Case Weight	Case Dimensions
6	6.75	59.50 x 7.75 x 4.50

### #981 Steel Mop Handle



- 1" x 60" long steel handle with 5" handgrip and hanger hole.
- Total length of 65".
- Galvanized steel wing nut mop frame.
- Traditional style handle easily attaches to any Libman mop head.

Case Pack	Case Weight	Case Dimensions
6	11.84	65.50 x 9.00 x 4.38

**#974 #16 Cotton Wet Mop Head - Cut End**  
**#975 #24 Cotton Wet Mop Head - Cut End**  
**#976 #32 Cotton Wet Mop Head - Cut End**



- 4-ply, recycled post-industrial cotton blend.
- 15% recycled post-industrial polyester adds strength, reduces linting/fraying, and reduces break-in period.
- Cut-end with 1.25" cloth head band.
- Economical cleaning option, excellent for general use.

Item	Case Pack	Case Weight	Case Dimensions
#974	6	5.99	13.70 x 9.90 x 7.50
#975	6	8.82	16.40 x 13.30 x 6.60
#976	6	14.99	19.38 x 18.00 x 7.25

**#972**  
**Large Cotton Looped-End Wet Mop Head**



- 4-ply, recycled post-industrial cotton blend.
- 1.25" cloth head band.
- 15% recycled post-industrial polyester adds strength, reduces linting/fraying, and reduces break-in period.
- Looped-end with 1/2" tail band to provide more durability and will not tangle.
- Excellent for all-purpose mopping applications.
- Greater durability than cut-end mops.

Case Pack	Case Weight	Case Dimensions
6	8.71	17.40 x 13.50 x 7.40

**#2122**  
**Large Antibacterial Looped-End Wet Mop Head (Green)**



- 4-ply, recycled antibacterial polyester and cotton blended yarn.
- Looped-end with 1/2" tail band to provide more durability and will not tangle.
- 1.25" cloth head band.
- Resists odor causing bacteria.
- Picks up 5-7 times its weight in water and wrings out easily.
- Machine washable and reusable.
- Excellent for general cleaning, in high frequency applications.

Case Pack	Case Weight	Case Dimensions
10	14.26	21.63 x 13.38 x 9.75

**#968**  
**Medium Blend Looped-End Wet Mop Head (Blue)**



- 4-ply, recycled blend of cotton and polyester to absorb up to 7 times its weight.
- Balanced blend built for absorbency and strength.
- 1.25" cloth head band.
- Looped-end with 1/2" tail band to provide more durability and will not tangle.
- Excellent for heavy-duty, tough mopping jobs.
- Outlasts and outperforms cotton.

Case Pack	Case Weight	Case Dimensions
6	8.88	15.80 x 12.20 x 9.80

**#969**  
**Large Rayon Blend Looped-End Wet Mop Head (Blue/White)**



- Rayon, polyester, and cotton blend. Composed of recycled materials.
- 1.25" cloth head band.
- Looped-end with 1/2" tail band to provide more durability and will not tangle.
- Composed mainly of synthetic fibers for strength and to reduce break-in period.
- Great for applying all floor finishes, including floor wax.
- Candy-striped blue and white to easily identify this mop from others; prevents cross-contamination.

Case Pack	Case Weight	Case Dimensions
6	8.64	15.70 x 12.50 x 8.50

**#2121**  
**Microfiber Looped-End Wet Mop Head (Green)**



- Premium recycled microfiber lifts and locks dirt.
- Looped-end with 1/2" tail band to provide more durability and will not tangle.
- 10 oz. actual weight but equivalent in dimensional size to a 24 oz. head.
- 1.25" head band.
- Libman's most durable and rewashable mop head.
- Tube design has greater floor contact and less drag for increased productivity.
- Best used with Libman #981 or #983 mop handles.

Case Pack	Case Weight	Case Dimensions
10	7.84	16.75 x 13.00 x 8.38



Libman's dual-chamber and utility buckets are great for all deck mops and self-wringing mops.

**#1056 4 Gallon Bucket With Wringer - Black**  
**#2112 4 Gallon Bucket With Wringer - Green**



#1056

- 16" x 13.25" total opening, with 7.75" x 12.75" individual compartments.
- 4 gallon/16 quart bucket.
- 1 compartment for clean water, the other for dirty.
- Circular push-down wringer has integrated hook to hold mop handle in place.
- Ergonomic polymer molded handle.



#2112

- Constructed of durable polymer with pouring spouts on each side.
- Excellent for deck mops that can't be wrung with traditional bucket and wringer.

Case Pack	Case Weight	Case Dimensions
3	9.36	18.88 x 15.50 x 14.88

**#1055 4 Gallon Bucket - Black**  
**#2113 4 Gallon Bucket - Green**



#1055

- 16" x 13.25" total opening, with 7.75" x 12.75" individual compartments.
- 4 gallon/16 quart bucket.
- 1 compartment for clean water, the other for dirty.
- Ergonomic polymer molded handle.
- Constructed of durable polymer with pouring spouts on each side.
- Excellent for all self-wringing twist/cone mops.



#2113

Case Pack	Case Weight	Case Dimensions
3	7.88	18.80 x 15.50 x 15.10

**#255 3.5 Gallon Oval Utility Bucket - White**  
**#1272 3.5 Gallon Oval Utility Bucket - Black**



#255

- 3.5 gallon/14 quart bucket is 16" long and 10" wide.
- Ergonomic polymer molded handle.
- Constructed of durable polymer with pouring spouts on both ends.
- Excellent economical and general use option.
- Available in gray with red handle as #1370 (6-pack, 9.5lbs).



#1272

Case Pack	Case Weight	Case Dimensions
6	9.38	16.80 x 11.60 x 25.00

**#2111 3 Gallon/12 Quart Bucket**



- 13.25" x 13.25" total opening, with 6.5" x 12" individual compartments.
- 3 gallon/12 quart bucket.
- 1 compartment for clean water, the other for dirty.
- Ergonomic polymer molded handle.
- Constructed of durable polymer with pouring spouts on each side.
- Excellent for all self-wringing twist/cone mops.

Case Pack	Case Weight	Case Dimensions
3	6.45	14.10 x 14.30 x 14.90

**#256 3 Gallon Round Utility Bucket - White**



- 3 gallon/12 quart bucket is 15" long and 10" wide.
- Ergonomic polymer molded handle.
- Features pouring spouts on each side with notches on the bottom for fingers to help with pouring.
- Excellent economical and general use option.

Case Pack	Case Weight	Case Dimensions
6	6.12	15.90 x 11.70 x 14.00

**#517 3 Gallon Round Utility Bucket - Black**



- 3 gallon/12 quart bucket is 15" long and 10" wide.
- Ergonomic polymer molded handle.
- Features pouring spouts on each side with notches on the bottom for fingers to help with pouring.
- Excellent economical and general use option.

Case Pack	Case Weight	Case Dimensions
6	6.12	15.90 x 11.70 x 14.00

Libman's heavy and light duty sponge mops have super absorbent, tear-resistant sponges that leave floors sparkling clean.



**#955  
Roller Mop with Scrub Brush**



- 12" wide, tear resistant, synthetic sponge with raised cleaning circles.
- 1" diameter steel handle with 51.5" total height.
- 8.5" scrub brush with 0.75" long stiff bristles.
- Easy pull back, ergonomic handle grip to wring.
- Unique angled head design to maximize sponge to floor surface area coverage and to reduce user fatigue.
- Handle grip with hanger hole.
- Refill #956 (6-pack, 2.33 lbs).

Case Pack	Case Weight	Case Dimensions
4	10.72	56.75 x 12.75 x 9.25

**#3958  
Big Gator Mop® with Scrub Brush**



- 11" wide, tear resistant, synthetic sponge with absorbent cellulose surface removes more water.
- 1" diameter steel handle with 53.75" total height.
- 10" removable scrub brush with 0.75" long stiff bristles.
- Refill #3959 (6-pack, 2.00 lbs).
- Butterfly style mop wrings more water and leaves floors drier, faster.
- Handle grip with hanger hole.

Case Pack	Case Weight	Case Dimensions
4	10.28	61.00 x 12.00 x 11.00

**#2010  
Nitty Gritty® Roller Mop**



- 10" wide, tear resistant, synthetic sponge with raised cleaning circles.
- 3/4" diameter steel handle with 51.5" total height.
- 8.5" scrub brush with 0.75" long stiff bristles.
- Easy pull back, ergonomic handle grip to wring.
- Unique angled head design to maximize sponge to floor surface area coverage and to reduce user fatigue.
- Handle grip with hanger hole.
- Refill #2011 (6-pack, 1.99 lbs).

Case Pack	Case Weight	Case Dimensions
4	9.60	56.25 x 11.00 x 8.75

**#2016 Synthetic Sponge Roller Mop  
#2026 Wood Floor Roller Mop**



#2016

- 9" wide, tear resistant, synthetic sponge.
- 3/4" diameter steel handle with 51" total height.
- Easy pull back handle grip to wring.
- Refill #2017 (6-pack, 1.73 lbs).

Case Pack	Case Weight	Case Dimensions
4	7.90	52.50 x 8.00 x 11.00



#2026

- Extra dry 10" oceanic sponge ideal for the damp mopping wood floors require.
- Floors dry 3x faster than with standard sponge.
- 3/4" diameter steel handle with 51" total height.
- Easy pull back, ergonomic handle grip to wring.
- Refill #2027 (6-pack, 1.91 lbs).

Case Pack	Case Weight	Case Dimensions
4	8.74	56.50 x 10.75 x 8.75

**#3103  
Scrubster Mop™**



- 9" wide, tear resistant, synthetic sponge with absorbent cellulose surface removes more water.
- 3/4" diameter steel handle with 49.75" total height.
- 5" scrub brush with 0.75" long stiff bristles.
- Polymer, ergonomic wringer squeezes 100% of sponge.
- Easy squeeze and snap refill change.
- Handle grip with hanger hole.
- Refill #3105 (6-pack, 1.1 lbs).

Case Pack	Case Weight	Case Dimensions
4	7.10	51.00 x 9.75 x 8.75

**#3020  
Gator Mop®**



- 9" wide, tear resistant, synthetic sponge with absorbent cellulose surface removes more water.
- 3/4" diameter steel handle with 54.5" total height.
- 8.5" scrub brush with 0.75" long stiff bristles.
- Easy pull back, ergonomic handle grip to wring.
- Easy squeeze and snap refill change.
- Refill #3021 (6-pack, 1.15 lbs).

Case Pack	Case Weight	Case Dimensions
4	8.30	58.75 x 9.75 x 10.25

**#922**  
**24" Dust Mop Set**



- Set includes handle, frame, and dust mop head.
- Standard 24" x 5" dust mop head. 100% cotton.
- 1.75" cut-end fringe. Zipper opening.
- 1" diameter steel handle; 65" total height.
- Machine washable in mesh net bag.
- 360° swivel to reach tough spots.
- Handle grip with hanger hole.
- Excellent for large floor areas, hallways, gym floors, and more.

Case Pack	Case Weight	Case Dimensions
6	24.26	66.00 x 11.88 x 7.63

**#924**  
**36" Dust Mop Set**



- Set includes handle, frame, and dust mop head.
- Standard 36" x 5" dust mop head. 100% cotton.
- 1.75" cut-end fringe. Zipper opening.
- 1" diameter steel handle; 65" total height.
- Machine washable in mesh net bag.
- 360° swivel to reach tough spots.
- Handle grip with hanger hole.
- Excellent for large floor areas, hallways, gym floors, and more.

Case Pack	Case Weight	Case Dimensions
6	23.13	65.88 x 11.75 x 7.50

**#985**  
**Dust Mop Handle**



- Chrome plated, steel clip on swivel mop attachment.
- 1" diameter steel handle and 5" handle grip with hanger hole.
- Total length 63".
- Handle used for #922 and #924 dust mops.

Case Pack	Case Weight	Case Dimensions
6	8.22	62.00 x 4.75 x 4.38

**#923 24" Dust Mop Head**  
**#925 36" Dust Mop Head**



#923



#925

- 100% cotton.
- 1.75" cut-end fringe. Zipper opening.
- Machine washable in mesh net bag.
- Excellent for large floor areas, hallways, gym floors, and more.

Item	Case Pack	Case Weight	Case Dimensions
#923	6	10.14	14.25 x 14.00 x 8.25
#925	6	8.14	13.50 x 8.25 x 9.50

**#926**  
**18" XL Microfiber Fingers Dust Mop**



- Extra large 18" x 9" dust mop head. Premium microfiber.
- Elastic band head fits around base.
- 1" diameter steel handle; 50.75" total height.
- Machine washable and reusable.
- 360° swivel to reach tough spots.
- Base snaps flat onto handle to hang.
- Handle grip with hanger hole.
- Refill (Head only) #927 (6-pack, 3.59 lbs).
- Excellent for hardwood and other smooth hard flooring surfaces.

Case Pack	Case Weight	Case Dimensions
4	9.00	58.63 x 10.50 x 5.00

**#195**  
**18" Microfiber Fingers Dust Mop**



- 6.5" x 18.5" microfiber fingers dusting pad. 5" x 18" full rectangular flat base/frame.
- 3/4" diameter steel handle; 50" total height.
- Machine washable and reusable.
- 360° swivel to reach tough spots.
- Premium pad picks up fine dirt, dust, and hair.
- Handle grip with hanger hole.
- Refill (Head only) #196 (6-pack, 2.42 lbs).
- Excellent for hardwood and other smooth hard flooring surfaces.

Case Pack	Case Weight	Case Dimensions
6	10.36	61.00 x 9.75 x 6.38

**#4005**  
**11.5" Freedom® Floor Duster**



- 11.5" x 5.5" rectangular, flat-base frame and microfiber cleaning pad.
- 3/4" diameter steel handle; 52.5" total height.
- Premium microfiber fingers dusting pad has 5 times more surface area than disposable pads.
- Specially designed comb to remove the dust, dirt, and pet hair that is picked up.
- Excellent for quick and routine cleaning on smooth hard floors.
- Easy-change hook and loop pad.
- Machine washable and reusable.
- Refill (Pad only) #4006 (6-pack, 1.11 lbs).

Case Pack	Case Weight	Case Dimensions
4	6.55	56.75 x 11.50 x 5.25

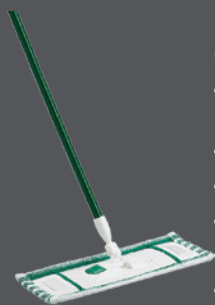
**#1172**  
**18" 2-Sided Microfiber Mop**



- 7" x 18.5" microfiber pad. 5" x 18" polypropylene base/frame.
- 3/4" diameter handle with handle grip and hanger hole; 52" total height.
- 360° swivel to reach tough spots. Head flips easily to use other side.
- Pad is machine washable and reusable. Refill available as #1173 (4-pack, 2.20 lbs).
- Specially designed comb to remove the dust, dirt, and pet hair that is picked up.
- Microfiber fingers side picks up dust, dirt, and pet hair.
- Smooth microfiber side can be used with any floor cleaner, washes away dirt and grime.

Case Pack	Case Weight	Case Dimensions
4	8.20	61.25 x 8.75 x 6.00

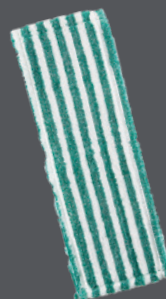
**#117**  
**18" Microfiber Wet/Dry Mop**



- 6.5" x 18.5" microfiber cleaning pad. 5" x 18" full rectangular flat base/frame.
- Base folds in two to remove and replace pad.
- 3/4" diameter steel handle; 50" total height.
- Handle grip with hanger hole.
- 360° swivel to reach tough spots.
- Use wet with cleaner or dry for dusting.
- Machine washable and reusable.
- Refill (Pad only) #119 (6-pack, 1.48 lbs).
- Excellent for quick and routine cleaning on smooth hard floors.

Case Pack	Case Weight	Case Dimensions
6	9.75	61.25 x 8.75 x 6.00

**#119**  
**18" Microfiber Wet/Dry Mop Pad**



- 6.5" x 18.5" microfiber cleaning pad.
- Use wet with cleaner or dry for dusting.
- Machine washable and reusable.
- Wrap-around style pad lasts and holds shape longer than hook and loop style.
- Replacement pad for #117.

Case Pack	Case Weight	Case Dimensions
6	1.48	9.40 x 5.60 x 6.20

**#1010**  
**15" Microfiber Wet/Dry Mop**



- 15" x 5" molded hook and loop mop head.
- 3/4" diameter steel handle; 57" total height.
- 360° swivel to reach tough spots.
- Comes with #1013 gray microfiber all-purpose cleaning pad that can be used wet or dry (12-pack, 2.49 lbs).
- Machine washable and reusable pad.
- Microfiber fingers dusting pad refill is #1011 (6-pack, 1.85 lbs).
- Excellent for quick and routine cleaning on smooth hard floors.

Case Pack	Case Weight	Case Dimensions
6	8.99	63.38 x 9.50 x 6.00

**#1034**  
**Gym Floor Mop**



- Sturdy steel handle with foam grip and hanger hole.
- Handle extends and contracts (range of 46-76" total height) for a greater reach and to fit the user.
- Traditional dust mop clip-on style attachment from handle to base.
- Thick microfiber pad adheres to base via hook and loop attachment.
- Pad is launderable and is built for multiple uses; has stitched edge for durability.
- Replacement pads available as #1073 (6-pack, 5 lbs).
- Excellent for soaking up sweat and liquid spills on all hardwood sport courts.

Case Pack	Case Weight	Case Dimensions
6	1.85	11.40 x 6.50 x 5.40



Libman's superb commitment to quality control has made the Freedom® Spray Mop one of the most durable and best performing mops in the industry.

**#4002  
Freedom® Spray Mop**



- 15" x 5" premium microfiber pad.
- Pad is machine washable up to 100 times.
- Total mop height is 49".
- Mop head angled to reach tough corners.
- Removable and refillable fluid reservoir can be filled with any bleach-free cleaning solution.
- Refill (pad only) #4003 (6-pack, 1.20 lbs).
- Disposable pad refill #4009, unit pack of 3 (12 pack, 2.52 lbs).
- Excellent for quick and routine cleaning on all smooth hard floors.
- #4007 hardwood and #4008 multi-surface liquid concentrated floor cleaners available (4-pack, 5.23 lbs).

Case Pack	Case Weight	Case Dimensions
4	10.98	56.25 x 12.25 x 3.74



**#4002 Freedom®  
Spray Mop**

**#2065  
32 oz. Hardwood Floor Cleaner (RTU)**



- 32 oz. pull cap bottle.
- Fresh citrus scent.
- Cleans, shines, and protects without a waxy build up.
- Hides minor scratches.
- Reveals beauty of the grain and nourishes the wood.
- Use for regular cleanings.
- Ready to use liquid.

Case Pack	Case Weight	Case Dimensions
6	14.00	7.88 x 8.31 x 10.50

**#2067  
32 oz. Hardwood Floor Polish (RTU)**



- 32 oz. pull cap bottle.
- Fresh citrus scent.
- Protects, renews, and restores hardwood floors, without yellowing, to their natural shine.
- Restores gloss to finished hardwood and laminate floors that have been distressed from heavy traffic or scratches.
- Use monthly to prevent scratching, dulling, and to maintain a high quality shine.
- Ready to use liquid.

Case Pack	Case Weight	Case Dimensions
6	14.00	7.88 x 8.31 x 10.50

**#4007  
16 oz. Freedom® Hardwood Cleaner (Concentrated)**



- 16 oz. specially designed bottle, with 1 oz. pre-dosing compartment to fill the Freedom® Spray Mop tank with the exact amount of cleaner needed.
- Concentrated hardwood floor cleaner.
- Fresh citrus scent.
- Cleans, shines, and protects without a waxy build up.
- Hides minor scratches.
- Reveals beauty of the grain and nourishes the wood.
- Fills Freedom® Spray Mop tank 16 times.
- Use for regular cleanings.

Case Pack	Case Weight	Case Dimensions
4	5.23	6.88 x 5.50 x 9.00

**#4008  
16 oz. Freedom® Multi-Surface Cleaner (Concentrated)**



- 16 oz. specially designed bottle, with 1 oz. pre-dosing compartment to fill the Freedom® Spray Mop tank with the exact amount of cleaner needed.
- Concentrated multi-surface floor cleaner.
- Fresh citrus scent.
- Cleans away dirt and grime.
- Use on tile, vinyl, wood, linoleum, laminate, marble, stone, and more.
- Fills Freedom® Spray Mop tank 16 times.
- Use for regular cleanings.

Case Pack	Case Weight	Case Dimensions
4	5.22	6.88 x 5.50 x 9.00

Featuring thick, high quality plastic in the right areas, Libman's trash cans are extremely durable.

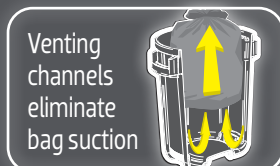


# Trash Cans

## Product Usage

Works great at any facility for trash, recycling, storage, and more. Fits all standard wheel dollies and maid carts that fit 32 gallon trash cans – perfect for on-the-go. Available in multiple colors to fit any end use need/facility color coding program. Built to hold super heavy materials without the handles warping and bending.

- Base handle grips conveniently located on the side of the base to easily lift and empty without having to touch the dirty bottom of the can.
- Vented channels on the inner sides – trash bags pull out easily and don't get suctioned down into the can.
- Bag tie cinches on the handles for knot-free liner changes.
- Fits standard wheel dollies.
- Heavy-duty reinforced handles will not bend and warp under extreme weights.
- Strong durable HDPE material will not bend/warp and resists cracking in colder temperatures.
- Rounded ergonomic handles don't cut into hands.
- Rounded snap-on lid adds more capacity.
- Thicker plastic on base to withstand rougher surfaces and dragging for an extended life.
- All cans and lids are shipped in quantities of 6.



## Also available in these colors:



## 32 Gallon Round Trash Can - Gray



\* Lid sold separately

## 32 Gallon Round Trash Can - Black



\* Lid sold separately

## 32 Gallon Round Trash Can - Green



\* Lid sold separately



# Housekeeping Tools & Rubber Gloves



Many of Libman's dusting heads connect to any threaded handle providing the ability to clean all high-reach areas.

**#585**  
**24" Flexible Microfiber Duster**



- 24" long x 3" wide duster head.
- Double-sided microfiber to lift and lock dirt; microfiber fingers provide maximum cleaning surface area and are excellent for delicate surfaces.
- Fits most threaded standard and extension handles, specifically Libman #611, #612, and #613.
- Machine washable and reusable head.
- Head bends and forms to meet all cleaning needs.
- Excellent for dusting tight and hard to reach places.
- Excellent for housekeeping, office, education, and hospitality applications.

Case Pack	Case Weight	Case Dimensions
6	4.31	30.10 x 6.20 x 3.80

**#155**  
**18" Flexible Microfiber Wand**



- 18" long x 3" wide duster head.
- Double-sided microfiber to lift and lock dirt; microfiber fingers provide maximum cleaning surface area and are excellent for delicate surfaces.
- Machine washable and reusable head.
- Head bends and forms to meet all cleaning needs.
- Excellent for dusting tight and hard to reach places.
- Ergonomic rubbergrip handle with hanger hole.
- Excellent for housekeeping, office, education, and hospitality applications.

Case Pack	Case Weight	Case Dimensions
6	3.55	24.60 x 6.30 x 3.90

**#94**  
**18" Flexible Microfiber Duster - Extendable**



- 18" long x 3" wide duster head.
- Double-sided microfiber to lift and lock dirt; microfiber fingers provide maximum cleaning surface area and are excellent for delicate surfaces.
- Handle extends to 5 feet, total length is 7 feet.
- Machine washable and reusable head.
- Head bends and forms to meet all cleaning needs.
- Excellent for all extended-reach dusting applications.

Case Pack	Case Weight	Case Dimensions
6	9.63	49.00 x 5.00 x 3.50

**#118**  
**Swivel Duster**



- 8" wide dusting head, dome shaped.
- Handle extends to 6 feet, total length is 6.5 feet.
- 3/4" diameter steel handle with hanger hole.
- Swivel head pivots 180 degrees.
- Excellent for cleaning recessed lighting and ceiling corners.

Case Pack	Case Weight	Case Dimensions
4	5.82	45.50 x 10.63 x 7.25

**#586**  
**Big Lambswool Duster**



- 12.5" long lambswool with 19.5" total length.
- Fits most threaded standard and extension handles, specifically Libman #611, #612, and #613.
- Made with real lambswool, to naturally attract and hold the smallest particles.
- Retains dust until spun free or washed out.

Case Pack	Case Weight	Case Dimensions
6	1.55	25.90 x 4.40 x 3.60

**#239**  
**Feather Duster**



- 7" long feathers with 13" total height.
- Extra soft real ostrich feathers.
- Ergonomic rubbergrip handle with hanger hole.
- Excellent for all housekeeping applications.

Case Pack	Case Weight	Case Dimensions
6	0.96	15.80 x 4.10 x 2.30

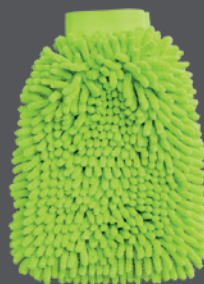
**#92  
Microfiber Duster**



- Oval 7.5" x 5" looped head.
- Premium microfiber fingers provide maximum cleaning surface area.
- Machine washable and reusable head.
- Ergonomic rubbergrip handle with hanger hole.
- Excellent for all housekeeping applications.

Case Pack	Case Weight	Case Dimensions
6	1.68	14.20 x 5.30 x 4.90

**#176  
Microfiber Dusting Mitt**



- 10.5" x 7" mitt.
- Double-sided microfiber to lift and lock dirt; microfiber fingers provide maximum cleaning surface area and are excellent for delicate surfaces.
- Elastic, secure fit hand mitt eliminates the need for cloths.
- Machine washable and reusable.
- Excellent for quick cleaning and keeps hands dust-free.

Case Pack	Case Weight	Case Dimensions
6	1.70	12.13 x 6.78 x 5.50

**#93  
Vent Brush**



- 18" long x 1.25" wide brush head with 27" total height.
- Designed to get into narrow and hard to reach places.
- Flexible brush can accommodate a variety of shapes and angles.
- Ergonomic rubbergrip handle with hanger hole.
- Excellent for grabbing dust off of vents, or in between narrow gaps and holes in machinery and more.

Case Pack	Case Weight	Case Dimensions
6	1.56	27.30 x 4.20 x 2.70

**#76  
Lint Roller**



- 8.3" long x 2" diameter.
- Ergonomic rubbergrip handle with hanger hole.
- 60 disposable sticky sheets.
- Easily picks up lint, hair, dust, and more.
- Excellent for use on clothes, furniture, draperies, and more.
- Refill #77 (6-pack, 1.05lbs).

Case Pack	Case Weight	Case Dimensions
6	1.60	9.00 x 4.30 x 5.10

**#1279  
Extra Wide Lint Roller With Extendable Handle**



- Extendable handle gets into hard-to-reach places.
- Ergonomic swivel hanger tip for easy storage.
- 25 sticky disposable sheets.
- Easy-peel, alternating colored tape helps find edges fast.
- Twist-and-lock extendable handle ranges from 28.5" to 40" total product length.
- Refill is #1280 (50 disposable sheets).
- Excellent for use on furniture, drapes, rugs, bedding, stairs, and more.

Case Pack	Case Weight	Case Dimensions
4	7.25	33.00 x 12.00 x 5.50

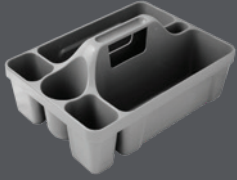
**#1281  
Mini Lint Roller**



- 6.5" long x 1.25" diameter.
- Ergonomic polypropylene handle with hanger hole for easy storage.
- 30 sticky disposable sheets.
- Easily picks up lint, hair, dust, and more.
- Excellent for cleaning kits, or quick pick-ups on clothing, furniture, drapes, rugs, bedding, stairs, and more.

Case Pack	Case Weight	Case Dimensions
6	0.65	6.75 x 3.25 x 2.50

## #1225 Maid Caddy



- 16" long x 11.5" wide.
- Bottle compartments on both sides – can hold up to 6, 32 oz. spray bottles at once (3 on each side).
- Open compartment design that can fit a variety of items.
- Two sponge/tool compartments are perfect for holding sponges, grout brushes, and more.
- Riveted handle grip for comfort and easy carrying.
- Durable polypropylene one-piece mold will not crack.
- Deep toilet bowl brush holder that fits most bowl brushes.
- Comes in white as #1232.

Case Pack	Case Weight	Case Dimensions
4	8.10	16.50 x 12.00 x 12.00



#1225 Maid Caddy

## #1320-1322 All-Purpose Reusable Latex Gloves



- #1320 – Small; #1321 – Medium; #1322 – Large
- Unit pack of 2 pairs of gloves.
- Cotton flock lined interior wicks away perspiration.
- Good tactile sensitivity and protection against animal fats, vegetable oils, mild acids, detergents, and alcohols.
- 18.5 mils thick, 12" total length.
- Excellent for applications in which gloves are worn for longer periods of time.

Item	Case Pack	Case Weight	Case Dimensions
#1320	12	3.80	11.00 x 6.13 x 7.00
#1321	12	4.20	11.00 x 6.13 x 7.00
#1322	12	4.56	11.00 x 6.13 x 7.00

## #1323-1325 Premium Reusable Latex Gloves



- #1323 – Small; #1324 – Medium; #1325 – Large
- Unit pack of 1 pair of gloves.
- Cotton flock lined interior wicks away perspiration.
- Extra long sleeve can be turned up to provide a drip-catching cuff.
- Textured for increased grip in wet and dry conditions.
- 25 mil thickness provides maximum protection from temperatures. 13" total length.
- Excellent for washing dishes with hot water, or for other nasty clean-ups.

Item	Case Pack	Case Weight	Case Dimensions
#1323	12	3.42	11.00 x 6.13 x 7.00
#1324	12	3.70	11.00 x 6.13 x 7.00
#1325	12	3.80	11.00 x 6.13 x 7.00

## #1317-1319 Heavy-Duty Reusable Nitrile Gloves



- #1317 – Small; #1318 – Medium; #1319 – Large
- Unit pack of 1 pair of gloves.
- Alternative option when latex allergies are a concern.
- Textured for increased grip in wet and dry conditions.
- 14 mils thick, 13" total length.
- Stronger and more durable for tougher applications; resistant to many solvents and chemicals.
- Excellent for applications where safety is a concern or for nasty clean-ups.

Item	Case Pack	Case Weight	Case Dimensions
#1317	12	1.85	11.00 x 6.25 x 4.50
#1318	12	2.05	11.00 x 6.25 x 4.50
#1319	12	2.20	11.00 x 6.25 x 4.50

## #1244 Industrial Grade Reusable Rubber Gloves



- Large/XL One size fits all.
- Unit pack of 1 pair of gloves.
- Cotton flock lined interior wicks away perspiration.
- Textured for increased grip in wet and dry conditions.
- Specialty blended polychloroprene; elastic and heavy-duty at the same time.
- Hardened shell for greater chemical and abrasion resistance.
- 24 mil thickness provides maximum protection from temperatures. 12" total length.
- Excellent for the toughest clean-up jobs and can be worn comfortably for long periods of time.

Case Pack	Case Weight	Case Dimensions
10	2.90	10.25 x 5.50 x 5.75



Libman's brushes, scrubbers, and sponges eliminate dirt and grime in a wide variety of applications.

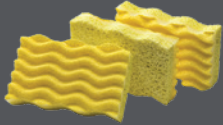


# Kitchen Tools



Libman's patented line of sponges has unique deep grooves to effectively remove debris and rinse clean.

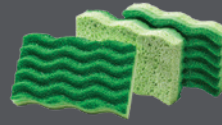
**#1075  
Light-Duty Sponge Pack**



- 4.5" x 3" natural cellulose sponge, with a premium non-abrasive acrylic grain scrubbing surface.
- Deep grooves provide constant contact with scrubbing surface to remove all debris.
- Debris will not clog acrylic grain surface and sponge rinses clean.
- Will not scratch non-stick surfaces.
- Unit pack contains 3 sponges.
- Excellent for delicate surfaces and quick clean-ups, including glass, china, granite countertops, and Teflon cookware.

Case Pack	Case Weight	Case Dimensions
8	1.28	12.70 x 5.00 x 6.40

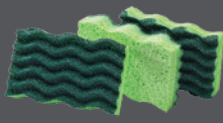
**#1076  
Medium-Duty Sponge Pack**



- 4.5" x 3" natural cellulose sponge, with a premium non-abrasive acrylic grain scrubbing surface.
- Deep grooves provide constant contact with scrubbing surface to remove all debris.
- Debris will not clog acrylic grain surface and sponge rinses clean.
- Will not scratch non-stick surfaces.
- Unit pack contains 3 sponges.
- Excellent for everyday, general use.

Case Pack	Case Weight	Case Dimensions
8	1.28	12.70 x 5.00 x 6.40

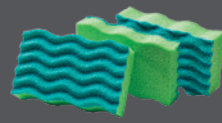
**#1077  
Heavy-Duty Sponge Pack**



- 4.5" x 3" natural cellulose sponge, with a premium acrylic grain scrubbing surface.
- Deep grooves provide constant contact with scrubbing surface to remove all debris.
- Debris will not clog acrylic grain surface and sponge rinses clean.
- Unit pack contains 3 sponges.
- Excellent for tough jobs, including stuck-on foods and heavy-duty pot and pan cleaning.

Case Pack	Case Weight	Case Dimensions
8	1.14	12.70 x 5.00 x 6.40

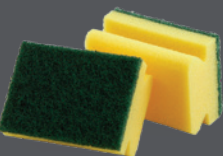
**#1079  
Antibacterial Sponge Pack**



- 4.5" x 3" premium synthetic sponge, with a premium non-abrasive acrylic grain scrubbing surface.
- Medium-duty sponge.
- Deep grooves provide constant contact with scrubbing surface to remove all debris.
- Debris will not clog acrylic grain surface and sponge rinses clean.
- Antibacterial and antimicrobial to fight odor causing bacteria and mold build-up.
- Unit pack contains 3 sponges.
- Excellent for everyday, general use.

Case Pack	Case Weight	Case Dimensions
8	0.87	12.80 x 4.90 x 6.30

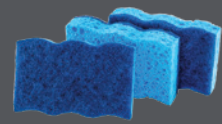
**#64  
Sponge Scrubbers**



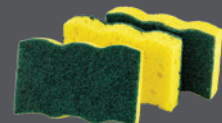
- 4" x 3" shaped synthetic sponge, with a scrubbing abrasive pad.
- Unit pack contains 2 scrubbers.
- Grooved for easy gripping.
- Sponge stays soapy while scrubber removes tough debris.
- Excellent for tough jobs.

Case Pack	Case Weight	Case Dimensions
6	0.50	7.90 x 6.20 x 6.40

**#1478 Non-Scratch Sponge Pack  
#1479 Heavy-Duty Scouring Sponge Pack**



#1478



#1479

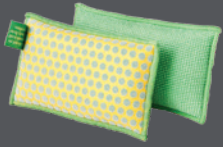
- 4.5" x 3" cellulose sponges with 100% recycled polyester scrubbing surfaces.
- Long-lasting and reusable.
- Unit pack contains 3 sponges.
- #1478 has non-scratch non-woven material that is great for delicate surfaces.
- #1479 has abrasive particles bonded to non-woven material for extra scrubbing power – great for stuck-on messes, tools, concrete, oven grates, and non-coated cookware.

Case Pack	Case Weight	Case Dimensions
8	1.28	12.70 x 5.00 x 6.40

### #336

#### Power Scrub Dots Sponges

- 3" x 5" absorbent sponge.
- Microfiber on one side, scrubbing dot pattern surface on the other.
- Will not scratch non-stick surfaces.
- Rinses clean, no stuck-on food particles.
- Unit pack contains 2 sponges.
- Excellent for everyday, general use.

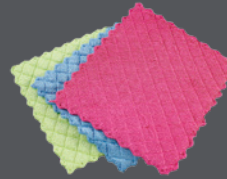


Case Pack	Case Weight	Case Dimensions
6	0.63	7.10 x 5.30 x 6.30

### #2103

#### Microfiber Sponge Cloths

- Thin, synthetic sponge is quilted between two microfiber cloths, combining the best of a sponge and a dish cloth.
- Polyester polyamide blended microfiber.
- Durable cloth lifts dirt and grime without streaking.
- Super absorbent to soak up spills.
- Machine washable.
- Unit pack contains 3 cloths in different colors.

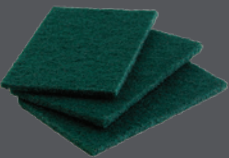


Case Pack	Case Weight	Case Dimensions
12	2.40	8.25 x 7.25 x 10.00

### #66

#### Scrub Pads

- 6" x 4" heavy-duty scouring pads.
- Unit pack contains 3 pads.
- Long-lasting and flexible to reach tough spots.
- Excellent for tough scrubbing of stuck-on food and grime.



Case Pack	Case Weight	Case Dimensions
12	1.46	8.20 x 6.90 x 6.80

### #63

#### Stainless Steel Scrubbers

- 3" x 3" x 1" round, woven steel fibers.
- Unit pack contains 2 scrubbers.
- Stainless steel, rust free.
- Long-lasting and flexible to easily reach tough spots.
- Excellent for tough scrubbing on pots, pans, grills, ovens, and more.

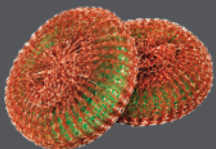


Case Pack	Case Weight	Case Dimensions
12	1.13	8.10 x 5.80 x 7.60

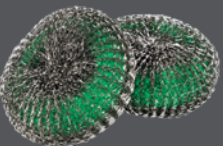
### #1239 Copper Power Scrubs

### #1240 Stainless Steel Power Scrubs

- #1239: 4" x 4" x 1.6" woven 100% copper with sponge core to hold soap and retain shape.
- #1240: 4" x 4" x 1.6" woven steel fibers with sponge core to hold soap and retain shape.
- #1239 is excellent for use on stainless steel, anodized aluminum, copper, and more.
- #1240 is excellent for tough scrubbing on pots, pans, grills, ovens, and more.
- Unit pack contains 2 scrubbers.
- Abrasive, yet soft enough to not hurt the hands.



#1239



#1240

Item	Case Pack	Case Weight	Case Dimensions
#1239	6	0.90	8.00 x 4.50 x 7.75
#1240	6	0.85	8.00 x 4.50 x 7.75

### #73

#### Copper Scrubbers

- 3" x 3" x 1" round, 100% pure copper.
- Unit pack contains 2 scrubbers.
- Rust-resistant copper.
- Long-lasting and flexible to easily reach tough spots.
- Excellent for use on stainless steel, anodized aluminum, copper, and more.



Case Pack	Case Weight	Case Dimensions
12	1.19	8.10 x 5.60 x 7.60



Libman dual-molded kitchen brush handle grips provide ergonomic comfort and designs that make cleaning easier and more efficient.

**#14  
Hand and Nail Brush**



- 110 tufts of flexible, polymer staple-set fibers.
- Ergonomic rubbergrip handle with thumb rest and hanger hole.
- 2" x 4" oval scrub surface.
- Perfect fit for hand cleaning.
- Ample extra knuckle room.

Case Pack	Case Weight	Case Dimensions
6	1.62	9.88 x 5.25 x 4.25

**#42  
Curved Kitchen Brush**



- 53 tufts of extra durable, 3/4" recycled PET, staple-set fibers.
- Ergonomic rubbergrip handle with thumb rest and hanger hole.
- 2" wide rounded head to reach all areas.
- Excellent for cleaning coffee pots and other round pots.
- Excellent all-purpose kitchen brush.

Case Pack	Case Weight	Case Dimensions
6	1.28	9.90 x 9.20 x 2.40

**#45  
Kitchen Brush**



- 48 tufts of extra durable, 1.375" recycled PET, staple-set fibers.
- 8" long, ergonomic rubbergrip handle with thumb rest and hanger hole.
- 2" x 2" scrub surface with scraper edge.
- Excellent for all dish cleaning, kitchen applications, and multi-purpose scrubbing applications.

Case Pack	Case Weight	Case Dimensions
12	2.24	15.00 x 10.80 x 1.90

**#36  
Vegetable Brush**



- 48 tufts of 1" long, natural tampico, staple-set fibers.
- 8" long, ergonomic rubbergrip handle with thumb rest and hanger hole.
- 2.25" x 2.25" scrub surface with scraper edge.
- Cleans dirt off vegetables and other food items without scratching.

Case Pack	Case Weight	Case Dimensions
12	2.27	15.10 x 11.50 x 2.90

**#47  
Brass Pot Brush**



- 48 tufts of extra tough, 7/8" brass, staple-set fibers.
- 8" long, ergonomic rubbergrip handle with thumb rest and hanger hole.
- 2" x 2" scrub surface with scraper edge.
- Excellent for heavy-duty scrubbing on stainless steel and cast iron surfaces.

Case Pack	Case Weight	Case Dimensions
12	2.81	15.80 x 10.90 x 2.30

**#46  
Dish Brush**



- Over 500 molded, 3/4" long, soft polymer fibers.
- 8" long, ergonomic rubbergrip handle with thumb rest and hanger hole.
- 2.25" diameter round scrub surface with scraper edge.
- Excellent for all dish cleaning and other kitchen applications.

Case Pack	Case Weight	Case Dimensions
12	1.96	15.80 x 10.60 x 2.40

**#1042  
Dual-Scrub Kitchen Brush**



- 73 tufts of extra durable, 1.375" recycled PET, staple-set fibers.
- 8" long ergonomic rubbergrip handle with thumb rest and hanger hole.
- 2" x 3" scrub surface.
- Alternate 1.375" x .625" stiff scrubber on reverse side for extra tough jobs.
- Excellent for heavy-duty dish cleaning, stuck-on messes, and multi-purpose scrubbing applications.

Case Pack	Case Weight	Case Dimensions
6	1.83	11.50 x 8.50 x 3.30

**#1043  
All-Purpose Kitchen Brush**



- 71 tufts of extra durable, 1" recycled PET, staple-set fibers.
- 7.5" long ergonomic rubbergrip handle with thumb rest and hanger hole.
- 3" x 3.25" rounded scrub surface reaches corners and tough areas.
- Excellent for dish cleaning and other kitchen applications.

Case Pack	Case Weight	Case Dimensions
6	1.25	11.60 x 7.90 x 2.50

**#35  
Glass/Dish Sponge**



- 2" x 4.5" cylindrical sponge with bottom scrubber.
- 7" long ergonomic rubbergrip handle with thumb rest and hanger hole.
- 12" total length.
- Excellent for glassware, cups, and other delicate jobs.

Case Pack	Case Weight	Case Dimensions
12	2.03	15.70 x 12.70 x 2.90

**#39  
Stiff Bottle Brush**



- 2" stiff polymer bristles twisted in zinc-coated, rust-resistant wire.
- 6" long ergonomic rubbergrip handle with thumb rest and hanger hole.
- 13" total length.
- Excellent for bottles and other dishes with hard to reach spots.

Case Pack	Case Weight	Case Dimensions
12	1.89	13.40 x 6.40 x 6.20

**#1352  
Soft Bottle Brush**



- Soft, recycled PET, polymer fibers are suitable for any surface.
- 12" long ergonomic rubbergrip handle with thumb rest and hanger hole gets at hard to reach areas.
- Heavy-duty polypropylene injection molded plastic handle.
- Brush is dishwasher safe.
- Excellent for bottles, coffee mugs, and other dishes with hard to reach spots.

Case Pack	Case Weight	Case Dimensions
6	1.45	12.75 x 11.00 x 3.25



**#35 Glass/Dish Sponge**

**#1130**  
**Gentle Touch Dish Wand**



- 7" long, sturdy PVC handle with contoured grip holds any dish soap.
- Cap-free design eliminates leaks.
- 3.625" x 3.125" sponge is shaped to fit corners.
- Rubber soap-dispensing button lifts to fill soap.
- Tear-resistant synthetic sponge with non-scratch cellulose surface.
- Built-in scraper edge.
- Refill sponges are #1131. Unit-Pack of 2 (Case of 6, 0.74 lbs).

Case Pack	Case Weight	Case Dimensions
6	1.46	13.50 x 14.25 x 2.25

**#1132**  
**Gentle Touch Dish Wand with Scrub Brush**



- 7" long, sturdy PVC handle with contoured grip holds any dish soap.
- Cap-free design eliminates leaks.
- 3.625" x 3.125" sponge is shaped to fit corners.
- Rubber soap-dispensing button lifts to fill soap.
- Tear-resistant synthetic sponge with non-scratch cellulose surface.
- 0.5" stiff bristles on reverse side for tough jobs.
- Refill sponges are #1133. Unit-Pack of 2 (Case of 6, 0.98 lbs).

Case Pack	Case Weight	Case Dimensions
6	1.47	13.75 x 13.50 x 2.38

**#1134**  
**All-Purpose Scrubbing Dish Wand**



- 7" long, sturdy PVC handle with contoured grip holds any dish soap.
- Cap-free design eliminates leaks.
- 3.625" x 3.125" synthetic sponge is shaped to fit corners.
- Rubber soap-dispensing button lifts to fill soap.
- Non-scratch acrylic grain scrub surface with scraper edge.
- Refill sponges are #1135. Unit-Pack of 2 (Case of 6, 0.74 lbs).

Case Pack	Case Weight	Case Dimensions
6	1.40	13.50 x 14.25 x 2.25

**#1136**  
**All-Purpose Scrubbing Dish Wand with Scrub Brush**



- 7" long, sturdy PVC handle with contoured grip holds any dish soap.
- Cap-free design eliminates leaks.
- 3.625" x 3.125" synthetic sponge is shaped to fit corners.
- Rubber soap-dispensing button lifts to fill soap.
- Non-scratch acrylic grain scrub surface with 0.5" stiff bristles on reverse side for extra tough jobs.
- Refill sponges are #1137. Unit-Pack of 2 (Case of 6, 0.96 lbs).

Case Pack	Case Weight	Case Dimensions
6	1.76	13.50 x 14.25 x 2.25

**#1372**  
**Dishmatic® Dish Wand**



- 10.5" long, sturdy PVC handle holds any dish soap.
- Polyester easy-flow through 2.25" x 3.75" sponge with non-woven abrasive pad.
- Twist-and-click screw cap for easy soap filling.
- Shaped to fit into corners and small spaces.
- 3-pack light duty refill heads are #1374 (Case of 9, 0.82 lbs).
- 3-pack general duty refill heads are #1373 (Case of 9, 0.82 lbs).
- 6-pack general duty refill heads are #1375 (Case of 6, 1.10 lbs).

Case Pack	Case Weight	Case Dimensions
6	0.71	10.12 x 5.20 x 4.76

**#1376**  
**Dishmatic® I-Stand Dish Wand**



- 10.25" long, sturdy PVC handle holds any dish soap.
- Polyester easy-flow through 2.25" x 3.75" sponge with non-woven abrasive pad.
- Stand up base eliminates soap leakage, keeps sponge dry, and eliminates messy counters.
- Two setting flow control system for soap release.
- Shaped to fit into corners and small spaces.
- 3-pack light duty refill heads are #1374 (Case of 9, 0.82 lbs).
- 3-pack general duty refill heads are #1373 (Case of 9, 0.82 lbs).
- 6-pack general duty refill heads are #1375 (Case of 6, 1.10 lbs).

Case Pack	Case Weight	Case Dimensions
6	1.32	10.83 x 5.12 x 7.87

All Libman brush & broom fibers are staple-set into the polymer block, resulting in better fiber retention.



**#528**  
**Long Handle Grill Brush with Scraper - Red**



- 100 tufts of extra tough, 3/4" brass fibers.
- 13" long, grooved handle with thumb rest and hanger hook.
- 3" x 4" brush surface with 2.75" wide steel scraper.
- 18" total length.
- Quality design that does not lose any metal fibers.
- Dual-molded sanoprene handle grip.
- Excellent for all surfaces, including stainless steel, porcelain, and cast iron.

Case Pack	Case Weight	Case Dimensions
6	3.71	18.90 x 11.60 x 3.00

**#568**  
**Long Handle Grill Brush**



- 100 tufts of extra tough, 3/4" brass fibers.
- 13" long, grooved handle with thumb rest and hanger hook.
- 3" x 4" brush surface and polypropylene scraper edge.
- 18" total length.
- Quality design that does not lose any metal fibers.
- Dual-molded sanoprene handle grip.
- Excellent for all surfaces, including stainless steel, porcelain, and cast iron.

Case Pack	Case Weight	Case Dimensions
6	3.71	18.60 x 11.90 x 2.90

**#529**  
**Long Handle Grill Brush with Scraper - Black**



- 100 tufts of extra tough, 3/4" brass fibers.
- 13" long, grooved handle with thumb rest and hanger hook.
- 3" x 4" brush surface with 2.75" wide steel scraper.
- 18" total length.
- Quality design that does not lose any metal fibers.
- Dual-molded sanoprene handle grip.
- Excellent for all surfaces, including stainless steel, porcelain, and cast iron.

Case Pack	Case Weight	Case Dimensions
6	3.71	18.63 x 11.50 x 2.88

**#566**  
**Long Handle Stainless Steel Grill Brush**



- 100 tufts of extra tough, 3/4" stainless steel fibers.
- 13" long, grooved handle with thumb rest and hanger hook.
- 3" x 4" brush surface and polypropylene scraper edge.
- 18" total length.
- Quality design that does not lose any metal fibers.
- Dual-molded sanoprene handle grip.
- Only for use on stainless steel and cast iron surfaces.

Case Pack	Case Weight	Case Dimensions
6	4.00	18.60 x 11.90 x 3.00

**#575 Short Handle Grill Brush With Scraper - Red**  
**#69 Short Handle Grill Brush With Scraper - White**



- 68 tufts of extra tough, 3/4" brass fibers.
- 8" long, grooved handle with thumb rest and hanger hole.
- 11" total length.
- 3" x 4" brush surface, with 2.75" wide steel scraper.
- Quality design that does not lose any metal fibers.
- Excellent for all surfaces, including stainless steel, porcelain, and cast iron.
- Great for small foodservice machines such as panini grills.

Case Pack	Case Weight	Case Dimensions
6	2.45	12.20 x 11.90 x 3.00

**#595**  
**Short Handle Stainless Steel Grill Brush**



- 68 tufts of extra tough, 3/4" stainless steel fibers.
- 8" long, grooved handle with thumb rest and hanger hole.
- 11" total length.
- 3" x 4" brush surface and polypropylene scraper edge.
- Quality design that does not lose any metal fibers.
- Only for use on stainless steel and cast iron surfaces.
- Great for small foodservice machines such as panini grills.

Case Pack	Case Weight	Case Dimensions
6	2.35	12.20 x 12.10 x 3.20



Libman's squeegees have a strong focus on rubber flexibility and performance.



# Squeegees, Vehicle Wash, & Cloths

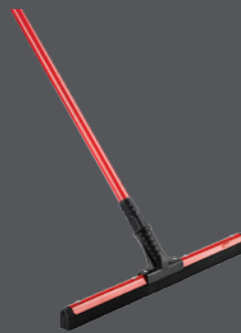
**#1014**  
**24" Flex Blade Floor Squeegee Set**



- 24" wide black, closed-cell foam rubber blade.
- 58" long steel handle with durable threaded connection and handle grip with hanger hole.
- Extra strong steel backing connects handle to squeegee.
- Refill blade available as #1059 (12-pack, 5.51 lbs).
- Excellent for smooth, semi-smooth, and uneven floor surfaces including tile, concrete, and brick.

Case Pack	Case Weight	Case Dimensions
6	14.82	59.25 x 10.50 x 6.00

**#191**  
**18" Flex Blade Floor Squeegee Set**



- 18" wide black, closed-cell foam rubber blade.
- 52" long steel handle with durable threaded connection and handle grip with hanger hole.
- Rivet set to hold squeegee onto the handle neck.
- Squeegee head only available as #192 (6-pack, 3.74 lbs).
- Excellent for smooth, semi-smooth, and uneven floor surfaces including tile, concrete, and brick.

Case Pack	Case Weight	Case Dimensions
6	8.11	554.00 x 7.25 x 4.50

**#542 24" Curved Floor Squeegee Set**  
**#954 36" Curved Floor Squeegee Set**



- Curved, vulcanized natural rubber squeegee blade mounted with a curve to remove and contain liquid.
- Contains Libman #600 60" long handle; 1 1/8" tapered and lacquered with hanger hole.
- Handle friction fits the steel frame with a screw hole for extra hold.
- Bolted metal frame with tapered handle connector is powder coated to prevent rust.
- 1/4" thick, 2" long, hard rubber blade fastened with lock nuts.
- 24" squeegee head only available as #539 (6-pack, 13.43 lbs.).
- Excellent for removing water, melting snow/ice, mud, and chemicals from any smooth floor surface.

Item	Case Pack	Case Weight	Case Dimensions
#542	6	25.76	61.75 x 12.75 x 6.50
#954	6	31.55	63.00 x 14.75 x 5.25

**#1038**  
**24" Straight Floor Squeegee Set**



- 24" wide, straight, vulcanized, natural rubber squeegee blade.
- Contains Libman #600 wood handle - 1 1/8" tapered, lacquered.
- Bolted metal frame with tapered handle connector.
- 1/4" thick, 2" long, hard rubber blade fastened with lock nuts.
- Excellent for removing water or chemicals from outdoor or industrial applications, specifically for smooth surfaces.
- Squeegee head only available as #538 (6-pack, 13.81 lbs).

Case Pack	Case Weight	Case Dimensions
6	25.71	61.25 x 12.75 x 6.25

**#1276**  
**24" Heavy-Duty Curved Floor Squeegee Set**



- 24" wide, curved, vulcanized natural rubber squeegee blade mounted with a curve to remove and contain liquid.
- 1 1/8" thick, lacquered wood handle that is screw-set into the brace block.
- Tough resin brace block adds leverage and durability.
- 15" long ergonomic grip with hanger hole for easy storage.
- Total length of 63.25".

Case Pack	Case Weight	Case Dimensions
4	16.25	25.00 x 8.50 x 65.25

**#515**  
**24" Soft Rubber Floor Squeegee Set**



- 24" soft, synthetic rubber blade.
- 59" long steel handle with threaded connection and handle grip with hanger hole.
- Extra strong polymer support brace connects handle to squeegee.
- Excellent for smooth and semi-smooth floor surfaces.
- Synthetic rubber blade is resistant to all oils and petroleum-based liquids; great for auto body shops.

Case Pack	Case Weight	Case Dimensions
6	9.35	59.50 x 6.50 x 4.50

**#1060**  
**18" Clamp Squeegee**

- 18" wide, vulcanized, natural rubber blade.
- Specially designed clamp to change blade easily and quickly.
- No slip rubber grip.
- Flexible blade wipes streak free.
- Excellent for professional window cleaning.



Case Pack	Case Weight	Case Dimensions
6	3.2	22.75 x 9.25 x 2.50

**#1061**  
**18" Swivel Squeegee**

- 18" wide, vulcanized, natural rubber blade.
- Specially designed clamp to change blade easily and quickly.
- Strong polypropylene swivel neck easily rounds tight corners.
- Fits threaded Libman extension handles #611, #612, and #613.
- No slip, ribbed handle grip.
- Excellent for professional window cleaning, specifically jobs with tight corners.
- Flexible blade wipes streak free.



Case Pack	Case Weight	Case Dimensions
6	3.10	21.75 x 5.00 x 8.50

**#193**  
**Microfiber Window Washer**

- 11.25" wide microfiber head.
- Use with or without handle.
- Fits threaded Libman extension handles #611, #612, and #613.
- Removes tough dirt from windows. Use wet or dry.
- Microfiber is machine washable and reusable.
- No slip, ribbed handle grip.
- Excellent for residential or commercial jobs.



Case Pack	Case Weight	Case Dimensions
6	3.20	11.10 x 11.60 x 8.10

**#194**  
**Microfiber & Squeegee Window Washer**

- 11.25" wide dual microfiber and rubber squeegee head.
- Use with or without handle.
- Fits threaded Libman extension handles #611, #612, and #613.
- Microfiber side can be used to remove tough dirt or apply chemicals.
- Flexible blade wipes streak free.
- No slip, ribbed handle grip.
- Excellent for residential or commercial jobs.



Case Pack	Case Weight	Case Dimensions
4	3.13	11.40 x 9.20 x 8.60

**#189 12" Stainless Steel Squeegee**  
**#190 18" Stainless Steel Squeegee**

- Vulcanized, natural rubber blade.
- Flexible blade wipes streak-free.
- Blade channel can be removed and replaced by loosening screws.
- Sturdy stainless steel handle and blade channel.
- Excellent for residential or commercial jobs.



#189



#190

Item	Case Pack	Case Weight	Case Dimensions
#189	12	5.06	18.80 x 9.50 x 4.20
#190	12	6.03	22.50 x 9.40 x 4.40

**#1067**  
**3-in-1 Window Squeegee**

- Convenient combo of spray bottle, microfiber scrubbing cloth, and squeegee.
- Polypropylene molded bottle is lightweight and easy to fill.
- 10" microfiber scrubber cloth is non-shedding, non-scratching, and machine washable.
- 10" virgin vulcanized rubber blade helps provide a streak-free shine.
- Top can be rotated so squeegee is adjacent to spray nozzle.
- Excellent all-purpose option for residential or commercial jobs.



Case Pack	Case Weight	Case Dimensions
4	2.36	13.50 x 12.00 x 6.75

**#1070  
Shower Squeegee**

- 8" wide squeegee.
- Total length 9".
- High-quality rubber wiping blade is molded into squeegee frame – will not come loose.
- Ergonomic, rubbergrip handle with thumb rest and hanger hole.
- Excellent for windows, mirrors, and showers.



Case Pack	Case Weight	Case Dimensions
6	1.45	11.75 x 9.00 x 4.00

**#182  
All-Purpose Squeegee**

- 6" wide squeegee.
- Total length 6.5".
- High-quality rubber wiping blade.
- Lightweight and easy to use.
- Excellent for quick shower and all-purpose clean-ups.



Case Pack	Case Weight	Case Dimensions
12	2.11	7.10 x 6.60 x 7.40

**#1066  
Squeegee Bucket**

- 18.25" x 10.75" rectangular bucket.
- Fits up to 18" squeegees.
- Holds up to 6 gallons of cleaning solution.
- Easy to read fill lines.
- Heavy duty polymer molded handle grip.
- Excellent for professional and residential cleaning.



Case Pack	Case Weight	Case Dimensions
3	9.64	22.88 x 12.75 x 16.25

**#1065  
Window Cleaning All-In-One Kit**

- Total solution window cleaning kit: bucket, stainless steel squeegee, concentrated cleaning solution, microfiber washer, and window cloth.
- 15" x 7", 3 gallon bucket, with lid to store supplies when not in use.
- 12" wide, vulcanized, natural rubber blade on the stainless steel squeegee (#189).
- 24 oz. concentrated window cleaner leaves a streak-free shine (#1063).
- 11.25" wide, microfiber washer to remove tough dirt or apply chemical. Use wet or dry. Machine washable (#193).
- 14.5" x 13.5" premium microfiber glass cloth cleans lint free (#323).
- Excellent as a window cleaning starter-kit.



Case Pack	Case Weight	Case Dimensions
2	9.54	18.40 x 10.00 x 15.20

**#1063  
Concentrated Window Cleaner**

- 24 oz. concentrated window cleaner.
- Provides a thick, stable foam to eliminate squeegee chatter.
- One bottle of concentrated cleaner makes 12 gallons of solution.
- Contains purified and conditioned water, surfactant, stabilizers, and dye.
- Excellent for glass, chrome, stainless steel, plastic, formica, ceramic, and more.



Case Pack	Case Weight	Case Dimensions
6	10.64	9.30 x 6.60 x 8.10

**#1064  
Ready-to-Use Window Cleaner**

- 1 gallon diluted professional window cleaner.
- Provides a thick, stable foam to eliminate squeegee chatter.
- No mixing needed.
- Contains purified and conditioned water, surfactant, stabilizers, and dye.
- Excellent for glass, chrome, stainless steel, plastic, formica, ceramic, and more.



Case Pack	Case Weight	Case Dimensions
4	35.37	15.60 x 9.30 x 11.50



Libman does extensive in-house and independent lab testing to ensure the highest quality products.

**#535  
Dual-Sided Brush Head**



- 10" x 6" dual-sided scrubbing surface.
- 2.5" long staple-set, flagged fibers.
- Firm but flexible long lasting fibers made with recycled PET bottles.
- Fits standard handles, specifically Libman #601/1165 (red/black) or as a wet scrubber with #607 flow-through handle.
- Flagged, softer fibers are great for holding soap while scrubbing.
- Excellent for multi-surface applications and washing vehicles.

Case Pack	Case Weight	Case Dimensions
12	7.78	56.25 x 6.63 x 4.25

**#540  
Vehicle Brush Head**



- 10" x 3" scrubbing surface.
- 3" long staple-set, flagged fibers.
- Firm but flexible long-lasting fibers made with recycled PET bottles.
- Fits standard handles, specifically Libman #601/1165 (red/black) or as a wet scrubber with #607 flow-thru handle.
- Excellent for removing bugs and dirt from vehicles, without damage.

Case Pack	Case Weight	Case Dimensions
12	7.78	56.25 x 6.63 x 4.25

**#560  
Vehicle Brush with Flow-Thru Handle**



- 10" x 3" scrubbing surface.
- 3" long staple-set flagged fibers.
- Firm but flexible long-lasting fibers made with recycled PET bottles.
- Telescopic handle extends to 6 feet.
- Connects to any standard hose.
- Brush head is #540, handle is #607.
- Strong yet soft brush fibers remove bugs and dirt from vehicles, without damage.
- Excellent for reaching vehicle roofs and undercarriage.

Case Pack	Case Weight	Case Dimensions
12	7.78	56.25 x 6.63 x 4.25

**#188  
Telescopic Window Washer**



- 10" wide scrub net and sponge head on one side.
- 10" rubber squeegee blade wipes streak-free.
- Aluminum threaded handle extends to 8 feet, total product length of 8.5 feet.
- Hanger hole for storage.
- Excellent for high windows, windshields, and other hard to reach windows.

Case Pack	Case Weight	Case Dimensions
12	7.78	56.25 x 6.63 x 4.25



**#1070 Shower Squeegee**



**#535 Dual-Sided Brush Head**

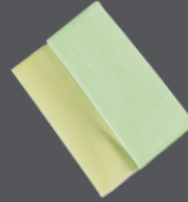
**#236**  
**12" x 12" Microfiber Cloth**



- 12" x 12" cloth.
- Microfiber blend of polyester and polyamide.
- Machine washable and reusable.
- Cleans with or without chemicals.
- Excellent for foodservice, janitorial, housekeeping applications, and more.
- Unit pack contains 1 green cloth.

Case Pack	Case Weight	Case Dimensions
12	1.38	10.90 x 5.40 x 4.20

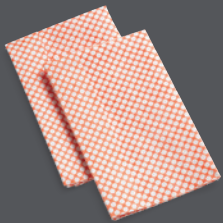
**#322**  
**12" x 12" Microfiber Cloths**



- 12" x 12" cloths.
- Microfiber blend of polyester and polyamide.
- Machine washable and reusable.
- Cleans with or without chemicals.
- Excellent for foodservice, janitorial, housekeeping applications, and more.
- Unit pack contains 2 cloths (yellow and light green).

Case Pack	Case Weight	Case Dimensions
6	1.16	11.50 x 5.90 x 3.30

**#2004**  
**Wonderfiber™ Cloths**



- 12" x 13.75" cloth.
- Non-woven, premium synthetic microfiber material – also used in Libman Wonder® Mops.
- Unit pack contains 2 cloths.
- Durable and extra absorbent.
- Rinses clean easily, no stuck-on food particles.
- Excellent for janitorial, housekeeping applications, and more.

Case Pack	Case Weight	Case Dimensions
18	1.89	10.40 x 5.50 x 5.60

**#592**  
**Glass Wipes**



- 13" x 17" lint-free towels.
- 100% cotton.
- Unit pack contains 6 wipes.
- Machine washable and reusable.
- Soft and absorbent, won't scratch.
- Excellent for foodservice, janitorial, housekeeping applications, and more.

Case Pack	Case Weight	Case Dimensions
12	6.00	14.90 x 10.80 x 4.20

**#590**  
**Terry Wipes**



- 13" x 17" pre-washed towels.
- 100% cotton.
- Unit pack contains 12 wipes.
- Machine washable and reusable.
- For cleaning, drying, and polishing. Commonly used for auto detailing.
- Excellent for foodservice, janitorial, construction, housekeeping applications, and more.

Case Pack	Case Weight	Case Dimensions
6	9.88	18.20 x 14.50 x 5.80

**#591 & #593**  
**Shop Wipes**



- 13" x 17" pre-washed industrial utility towels.
- 100% cotton.
- Available in a 12 unit pack as #591 and 24 unit pack as #593.
- Machine washable and reusable.
- Excellent for industrial, janitorial, construction applications, and more.

Item	Case Pack	Case Weight	Case Dimensions
#591	6	4.80	13.40 x 8.10 x 7.90
#593	6	9.00	13.30 x 13.40 x 8.10



# Handles

**#601**  
**60" Steel Handle - Red**



- 1" diameter steel handle.
- 60" long with 5" handle grip.
- Hanger hole for easy storage.
- Durable nylon standard thread.
- Replacement handle for all Libman resin block, threaded push brooms, floor scrubs and vehicle wash brushes.
- Available in black as Libman #1165 (case of 6, 6.44 lbs.).

Case Pack	Case Weight	Case Dimensions
6	6.44	60.38 x 6.00 x 4.00

**#603**  
**48" Steel Handle**



- 3/4" diameter steel handle.
- 48.5" long with 5" handle grip.
- Hanger hole for easy storage.
- Durable nylon standard thread.
- Replacement handle for Libman floor scrubs #547-549.

Case Pack	Case Weight	Case Dimensions
12	6.85	49.75 x 4.50 x 3.25

**#602**  
**60" Zinc Thread Wood Handle**



- 1" thick wood handle.
- Hardwood with zinc thread, 60" long.
- Standard thread can be used on any maintenance tool.
- Clear lacquer finish with hanger hole for easy storage.

Case Pack	Case Weight	Case Dimensions
12	13.64	60.25 x 4.38 x 2.75

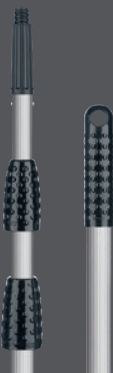
**#600**  
**60" Tapered Wood Handle**



- 60" long, tapered end.
- 1 1/8" thick wood handle.
- Fits tapered end applications, including Libman Floor Squeegees #538, #539, #542, #1038, and #954.
- Clear lacquer finish with hanger hole for easy storage.

Case Pack	Case Weight	Case Dimensions
6	9.42	60.00 x 4.00 x 2.50

**#611 8 Foot Extension Handle**  
**#612 12 Foot Extension Handle**  
**#613 16 Foot Extension Handle**



- #611: Three-piece handle extends to 8 feet, closes to approximately 3.5 feet.
- #612: Three-piece handle extends to 12 feet, closes to approximately 4.5 feet.
- #613: Three-piece handle extends to 16 feet, closes to approximately 5.5 feet.
- Light weight and durable aluminum with 5" handle grip and hanger hole.
- Dual-use threaded and tapered end.
- Can be used with Libman window squeegees #188, #1061, #193, and #194.

Item	Case Pack	Case Weight	Case Dimensions
#611	6	10.86	42.38 x 5.50 x 4.00
#612	6	15.04	58.50 x 5.63 x 4.00
#613	6	21.67	62.00 x 6.13 x 4.25

**#607**  
**On/Off Flow-Thru Handle**



- Telescopic handle extends to 6 feet and closes to approximately 3.5 feet.
- Connects to any standard hose.
- Easy shut-off valve conserves water.
- Attaches to Libman #535 and #540 brush heads.
- Excellent for automobile and floor/wall cleaning.

Case Pack	Case Weight	Case Dimensions
12	7.78	56.25 x 6.63 x 4.25



# Index

ITEM	PRODUCT NAME	PAGE
#10	Long Handle Utility Brush - White	16
#14	Hand and Nail Brush	38
#15	Small Scrub Brush	15
#16	Easy Grip Scrub Brush - White	16
#18	Tile & Grout Brush	16
#22	Round Bowl Brush	17
#24	Traditional Bowl Brush	18
#27	Traditional Bowl Brush & Caddy	18
#34	Round Bowl Brush & Open Caddy	17
#35	Glass/Dish Sponge	39
#36	Vegetable Brush	38
#39	Bottle Brush	39
#40	Round Bowl Brush & Closed Caddy	17
#42	Curved Kitchen Brush	38
#45	Kitchen Brush	38
#46	Dish Brush	38
#47	Brass Pot Brush	38
#54	Short Handle Utility Brush - White	16
#57	Power Scrub Brush	15
#63	Steel Scrubbers	37
#64	Sponge Scrubbers	36
#66	Scrub Pads	37
#69	Short Handle Grill Brush With Scraper - White	41
#73	Copper Scrubbers	37
#76	Lint Roller	33
#77	Lint Roller Refill	33
#88	8 oz. Cotton Deck Mop	21
#90	8 oz. Cotton Deck Mop Refill	21
#91	12 oz. Cotton Deck Mop	21
#92	Microfiber Duster	33
#93	Vent Brush	33
#94	18" Flexible Microfiber Duster	32
#95	Dust Pan and Brush Set	8
#101	Traditional Corn Broom	3
#117	18" Microfiber Wet/Dry Floor Mop	27
#118	Swivel Duster	32
#119	18" Microfiber Wet/Dry Floor Mop Refill	27
#121	12 oz. Cotton Wet Mop	21
#122	No Knees Floor Scrub	14
#130	12 oz. Cotton Wet Mop Refill	21
#155	Flexible Microfiber Wand	32
#176	Microfiber Dusting Mitt	33
#182	All-Purpose Squeegee	45
#188	Telescopic Window Washer	46
#189	12" Stainless Steel Squeegee	44
#190	18" Stainless Steel Squeegee	44
#191	18" Flex Blade Floor Squeegee Set	43
#192	18" Flex Blade Floor Squeegee Head	43
#193	Microfiber Window Washer	44
#194	Microfiber & Squeegee Window Washer	44
#195	Microfiber Dust Mop	26

ITEM	PRODUCT NAME	PAGE
#196	Microfiber Dust Mop Refill	26
#201	Precision® Angle Broom	3
#205	Large Precision® Angle Broom	3
#206	Precision® Angle Broom with Dust Pan	3
#211	Extra Large Precision® Angle Broom	3
#228	10" Dust Pan - Deep Well	7
#229	10" Dust Pan	7
#231	Counter/Bench Brush - White	8
#236	12" x 12" Microfiber Cloth	47
#238	13" Dust Pan - Green	6
#239	Feather Duster	32
#248	Large Precision® Angle Broom with Dust Pan	3
#255	Oval Utility Bucket	24
#256	3 Gallon Round Utility Bucket - White	24
#322	12" x 12" Microfiber Cloths	47
#336	Power Scrub Dots Sponges	37
#499	Value Upright Broom	2
#502	Janitor Corn Broom	2
#507	Floor Scrub - Head Only	14
#510	7" Scrub Brush	15
#513	9" Scrub Brush	15
#515	24" Soft Rubber Floor Squeegee Set	43
#516	Dual-Surface Scrub Brush - Head Only	14
#517	3 Gallon Round Utility Bucket - Black	24
#522	Long Handle Utility Brush - Red	16
#524	Short Handle Utility Brush - Red	16
#525	Iron Handle Scrub Brush - Red	16
#526	Counter/Bench Brush - Red	8
#528	Long Handle Grill Brush with Scraper - Red	41
#529	Long Handle Grill Brush with Scraper - Black	41
#532	Dual Surface Scrub Brush Set	14
#535	Dual-Sided Brush Head	46
#538	24" Straight Floor Squeegee Head	43
#539	24" Curved Floor Squeegee Head	43
#540	Vehicle Brush Head	46
#542	24" Curved Floor Squeegee Set	43
#547	Floor Scrub	14
#548	Acid Brush	14
#549	Tampico Floor Scrub	14
#560	Vehicle Brush with Flow-Thru Handle	46
#566	Long Handle Stainless Steel Grill Brush	41
#567	Big Scrub Brush	15
#568	Long Handle Grill Brush - No Scraper	41
#575	Short Handle Grill Brush with Scraper	41
#581	Industrial Grade Dust Pan	6
#585	24" Flexible Microfiber Duster	32
#586	Lambswool Duster	32
#590	Terry Wipes	47
#591	Shop Wipes - 12 Pack	47
#592	Glass Wipes	47
#593	Shop Wipes - 24 Pack	47



# Index

ITEM	PRODUCT NAME	PAGE
#595	Short Handle Stainless Steel Grill Brush	41
#597	Premium Toilet Plunger	18
#598	Premium Toilet Plunger & Caddy	18
#599	Wringer	22
#600	60" Tapered Wood Handle	49
#601	60" Steel Handle	49
#602	60" Zinc Thread Wood Handle	49
#603	48" Steel Handle	49
#607	On/Off Flow-Thru Handle	49
#611	8 Foot Extension Handle	49
#612	12 Foot Extension Handle	49
#613	16 Foot Extension Handle	49
#800	18" Smooth Surface Push Broom	10
#801	24" Smooth Surface Push Broom	10
#804	18" Multi-Surface Push Broom	10
#805	24" Multi-Surface Push Broom	10
#823	24" Multi-Surface Heavy Duty Push Broom	11
#825	24" Rough Surface Heavy Duty Push Broom	11
#850	36" Smooth Surface Heavy Duty Push Broom	11
#878	18" Rough Surface Push Broom	10
#879	24" Rough Surface Push Broom	10
#906	Dust Pan with Whisk Broom - Red	8
#907	Whisk Broom - Red	8
#911	13" Dust Pan - Red	6
#915	Lobby Broom	5
#916	Lobby Dust Pan (Closed Lid)	5
#917	Lobby Dust Pan & Broom (Closed Lid)	5
#918	Lobby Dust Pan (Open Lid)	5
#919	Lobby Dust Pan & Broom (Open Lid)	5
#922	24" Dust Mop	26
#923	24" Dust Mop Head	26
#924	36" Dust Mop	26
#925	36" Dust Mop Head	26
#926	XL Microfiber Fingers Dust Mop	26
#927	XL Microfiber Fingers Dust Mop Refill	26
#928	13" Dust Pan - Black	6
#929	Outdoor/Shop Scoop	6
#933	Mop Bucket & Wringer - Side Press	22
#944	16 Oz. Cotton Deck Mop Refill	21
#954	36" Curved Floor Squeegee Set	43
#955	Roller Mop with Scrub Brush	25
#956	Roller Mop with Scrub Brush Refill	25
#968	Large Blue Blend Wet Mop	24
#969	Large Finishing Wet Mop	24
#972	Large Looped-End Wet Mop	23
#974	#16 Cut-End Cotton Wet Mop	23
#975	#24 Cut-End Cotton Wet Mop	23
#976	#32 Cut-End Cotton Wet Mop	23
#977	16 oz. Cotton Deck Mop	21
#981	Steel Mop Handle	22
#982	Quick-Change Mop Handle	22

ITEM	PRODUCT NAME	PAGE
#983	Resin Jaw Mop Handle	22
#985	Dust Mop Handle	26
#988	Big Tornado Mop®	20
#989	Big Tornado Mop® Refill	20
#994	Commercial Angle Broom	2
#997	Wide Commercial Angle Broom	2
#1010	Microfiber Cleaning System	27
#1011	Microfiber Fingers Dusting Pad	27
#1013	Microfiber All-Purpose Cleaning Pad	27
#1014	24" Flex Blade Floor Squeegee Set	43
#1020	Angled Toilet Bowl & Urinal Brush	17
#1022	Premium Angled Toilet Bowl Brush & Caddy	17
#1024	Toilet Brush & Plunger Combo	18
#1030	Whisk Broom - White	8
#1031	Dust Pan with Whisk Broom - White	8
#1034	Gym Floor Mop	27
#1038	24" Straight Floor Squeegee Set	43
#1042	Dual-Scrub Kitchen Brush	39
#1043	All-Purpose Kitchen Brush	39
#1055	4 Gallon Bucket	24
#1056	4 Gallon Bucket With Wringer	24
#1059	24" Flex Blade Floor Squeegee Refill	43
#1060	18" Clamp Squeegee	44
#1061	18" Swivel Squeegee	44
#1063	Concentrated Window Cleaner	45
#1064	Ready-to-Use Window Cleaner	45
#1065	Window Cleaning All-In-One Kit	45
#1066	Squeegee Bucket	45
#1067	3-1 Window Squeegee	44
#1070	Shower Squeegee	45
#1073	Gym Floor Mop Replacement Pads	27
#1075	Light Duty Sponge Pack	36
#1076	Medium Duty Sponge Pack	36
#1077	Heavy Duty Sponge Pack	36
#1079	Antibacterial Sponge Pack	36
#1086	Stiff Sweep Lobby Broom	5
#1090	Big Scrub Brush - White	15
#1095	One-Piece Bucket & Wringer	22
#1101	36" Multi-Surface Heavy Duty Push Broom	11
#1102	Rough Surface Angle Broom	2
#1115	Wide Commercial Angle Broom - Black	2
#1130	Gentle Touch Foaming Dish Wand	40
#1131	Gentle Touch Foaming Dish Wand Refill	40
#1132	Glass & Dish Wand with Scrub Brush	40
#1133	Glass & Dish Wand with Scrub Brush Refill	40
#1134	All-Purpose Scrubbing Dish Wand	40
#1135	All-Purpose Scrubbing Dish Wand Refill	40
#1136	All-Purpose Scrubbing Dish Wand with Scrub Brush	40
#1137	All-Purpose Scrubbing Dish Wand with Scrub Brush Refill	40
#1140	Housekeeper Smooth Sweep Broom	2
#1150	9" Step-On Dust Pan	7



# Index

ITEM	PRODUCT NAME	PAGE
#1151	Tile & Tub Scrub Refill	16
#1161	Tile & Tub Scrub	16
#1165	60" Steel Handle - Black	49
#1166	Lobby Dust Pan & Broom Handle Clip	5
#1168	16" Large Scoop Dust Pan	6
#1172	18" 2-Sided Microfiber Mop	27
#1173	18" 2-Sided Microfiber Mop Refill	27
#1189	24" Multi-Surface Push Broom - Clamp Handle	10
#1193	Deluxe Lobby Dust Pan & Broom Set (Closed Lid)	5
#1194	Deluxe Lobby Dust Pan & Broom Set (Open Lid)	5
#1225	Maid Caddy - Gray	34
#1228	Heavy Duty Wonder® Mop with Scrub Brush	20
#1229	Heavy Duty Wonder® Mop Refill	20
#1230	24" Multi-Surface Squeegee Push Broom	11
#1232	Maid Caddy - White	34
#1239	Copper Power Scrubs	37
#1240	Stainless Steel Power Scrubs	37
#1244	Industrial Grade Reusable Rubber Gloves	34
#1259	Wall/Floor Scrubber with Extendable Handle	14
#1260	Wall/Floor Scrubber Refill Pads	14
#1272	Oval Utility Bucket - Black	24
#1276	24" Heavy-Duty Curved Floor Squeegee Set	43
#1279	Extra Wide Lint Roller with Extendable Handle	33
#1280	Extra Wide Lint Roller Refill	33
#1281	Mini Lint Roller	33
#1283	Tornado Spin Mop Sytem	20
#1284	Tornado Spin Mop Refill	20
#1292	24" Multi-Surface Industrial Push Broom	12
#1293	24" Rough Surface Industrial Push Broom	12
#1294	24" Smooth Surface Industrial Push Broom	12
#1317	Heavy-Duty Reusable Nitrile Gloves - S	34
#1318	Heavy-Duty Reusable Nitrile Gloves - M	34
#1319	Heavy-Duty Reusable Nitrile Gloves - L	34
#1320	All-Purpose Reusable Latex Gloves - S	34
#1321	All-Purpose Reusable Latex Gloves - M	34
#1322	All-Purpose Reusable Latex Gloves - L	34
#1323	Premium Reusable Latex Gloves - S	34
#1324	Premium Reusable Latex Gloves - M	34
#1325	Premium Reusable Latex Gloves - L	34
#1335	Janitor Corn Broom - Wood Handle	2
#1352	Soft Bottle Brush	39
#1353	Dual Sided Tile & Grout Brush	16
#1369	Two-Sided Caution Wet Floor Sign	22
#1372	Dishmatic® Dish Wand	40
#1373	Dishmatic® Dish Wand General Duty Refills - 3 Pack	40
#1374	Dishmatic® Dish Wand Light Duty Refills - 3 Pack	40
#1375	Dishmatic® Dish Wand General Duty Refills - 6 Pack	40
#1376	Dishmatic® I-Stand Dish Wand	40
#1478	Non-Scratch Sponge Pack	36
#1479	Heavy-Duty Scouring Sponge Pack	36
#2000	Wonder® Mop	20

ITEM	PRODUCT NAME	PAGE
#2001	Wonder® Mop Refill	20
#2004	Wonderfiber™ Cloths	47
#2010	Nitty Gritty® Roller Mop	25
#2011	Nitty Gritty® Roller Mop Refill	25
#2016	Basic Roller Mop	25
#2017	Basic Roller Mop Refill	25
#2026	Wood Floor Sponge Mop	25
#2027	Wood Floor Sponge Mop Refill	25
#2030	Tornado Mop®	20
#2031	Tornado Mop® Refill	20
#2065	32 oz. Hardwood Floor Cleaner (RTU)	28
#2066	32 oz. Multi-Surface Everyday Floor Cleaner (RTU)	29
#2067	32 oz. Hardwood Floor Polish (RTU)	28
#2103	Microfiber Sponge Cloths	37
#2111	3 Gallon Clean & Rinse Bucket	24
#2112	4 Gallon Bucket with Wringer - Green	24
#2113	4 Gallon Bucket - Green	24
#2120	Upright Dust Pan	6
#2121	Medium Microfiber Wet Mop	23
#2122	Large A-B Looped-End Wet Mop	23
#2125	12" Step-On Dust Pan	7
#2126	16" Step-On Dust Pan	7
#3020	Gator Mop®	25
#3021	Gator Mop® Refill	25
#3103	Scrubster™ Mop	25
#3105	Scrubster™ Mop Refill	25
#3958	Big Gator Mop® with Scrub Brush	25
#3959	Big Gator Mop® with Scrub Brush refill	25
#4002	Freedom® Spray Mop	28
#4003	Freedom® Spray Mop Pad	28
#4005	Freedom® Floor Duster	27
#4006	Freedom® Floor Duster Refill	27
#4007	16oz Freedom® Hardwood Cleaner (concentrated)	28
#4008	16oz Freedom® Multi-Surface Cleaner (concentrated)	28
#4009	Freedom® Spray Mop Disposable Pad	28
	32 Gallon Round Trash Can - Black	30
	32 Gallon Round Trash Can Lid - Black	30
	32 Gallon Round Trash Can - Gray	30
	32 Gallon Round Trash Can Lid - Gray	30
	32 Gallon Round Trash Can - Green	30
	32 Gallon Round Trash Can Lid - Green	30

## The Perfect Opportunity for your Showroom

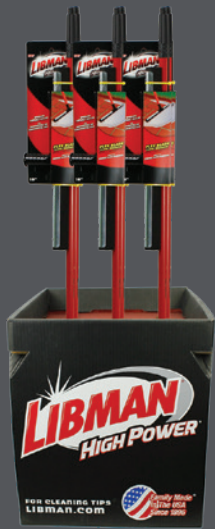
- Incremental sales + impulse buys.
- Increase awareness of your product offering.
- Easy to move around and merchandise.
- Doesn't take up very much space.

### Pyramid Upright Display



- Holds all size handles 3/4" to 1-1/8".
- Footprint: 21.25" x 13.5".
- Holds up to 14 handles.
- Item #9002280.

### Quarter Pallet Display

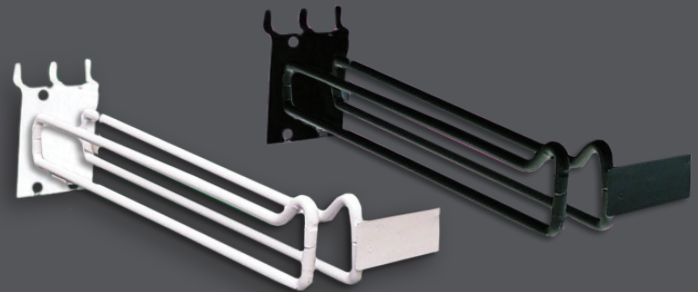


- Holds all size handles 3/4" to 1-1/8".
- Footprint: 24" x 20".
- Holds up to 20 handles.
- Components needed for one display:
  - 1 base #9000987
  - 2 trays #0004302

### Pegboard Hooks

**Double Prong Hook:** 3/8" wire, 18" long

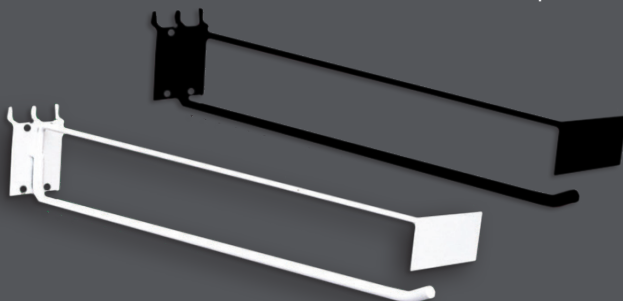
- Item #0003875 white (12 per box)
- Item #0003911 black (12 per box)



### Pegboard Hooks

**Single Prong Hook:** 3/8" wire, 17" long

- Item #0004317 white (12 per box)
- Item #0007060 black (12 per box)



### Pegboard Hooks

**Handle Dividers:** 1/4" wire, 15" long

- Item #0004410 white (12 per box)
- Item #0007062 black (12 per box)





# Business Terms

## Cash Terms:

Net 30 Days

## Freight Terms:

Freight prepaid on \$1,000 or more to single destination in the continental U.S. (excluding 11 western states, Alaska, and Hawaii) via carrier of our selection. Freight prepaid on \$2,500 to 11 western states (CA, WA, OR, ID, MT, UT, CO, WY, AZ, NM, NV). Any accessorial delivery-sort, segregate, and detention charges are the responsibility of the receiver.

## Returned Goods Policy:

Written authorization from the Libman Company is required. Freight prepaid by customer with a 10% restocking charge. Returned goods will be accepted for credit only and must be in original cartons in restockable condition.

## Damaged Goods Policy:

Proper acknowledgement and notation of damages or shortages on original freight bill is required to submit claims. Failure to adhere to these terms will result in disallowed claims.

## Send Payments To:

The Libman Company  
DEPT CH 19448  
Palatine, IL 60055-9448





# 125+ Years of Helping America Clean

## The more things change...

Since The Libman Company was founded as a broom manufacturer in 1896, our company has remained the same in many ways. We have maintained a commitment to offering the highest quality products on the market. The quality of our products has continuously met—and exceeded—the highest industry standards. The Libman family also continues to produce its high quality products in the USA.

## ...the more we've changed with them

The dedication to quality has been maintained over the generations. As the cleaning needs of the American public has expanded, so has our product line. However, product quality has never been sacrificed for the purposes of product line expansion. By remaining a reliable source for cleaning products, we have survived the ups and downs of the economy and worldwide events.

## 20th Century Growth

The Libman Company brought creativity and improved operations during the Great Depression. Those contributions helped Libman succeed throughout the era. In fact, Libman was one of the rare companies to expand its operations during the Depression.

In the 1950s, 60s, and 70s, Libman grew and improved its product line of brooms, mops, brushes and other cleaning products in the U.S. Libman began to vertically integrate its manufacturing operations throughout the 1980's and beyond. In the late 1990's, Libman Commercial was formed and the expansion of the product line continues today.

## Continuing Service

Today, the Libman family carries on the vision of quality and customer service. We look forward to serving our existing customers and expanding into new markets in the U.S. and abroad. As their needs change, we will continue to adapt with them.



# **LIBMAN**<sup>®</sup>

## **COMMERCIAL**



1 Libman Way  
Arcola, IL 61910

Toll Free: (800) 646-6262  
Phone: (217) 268-4200  
Orders Fax: (217) 717-9931

Orders Email: [orders@libman.com](mailto:orders@libman.com)  
Email: [info@libmanpro.com](mailto:info@libmanpro.com)  
Website: [libmanpro.com](http://libmanpro.com)