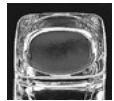


ROOM TUMBLERS



GLASS BASE



Rocks
No. 15434 +
9 oz./26.6 cl./266 ml.
H3% T3% B2% D3%
3 doz./24# • .99 cu. ft.
SCC 173938



Rocks
No. 15626 +
8½ oz./25.1 cl./251 ml.
H3% T3 B2% D3
3 doz./23# • .87 cu. ft.
SCC 005168



Rocks
No. 15457 +
10 oz./29.6 cl./296 ml.
H3% T3% B2% D3%
3 doz./23# • .93 cu. ft.
SCC 030125



Rocks
No. 15481 +
9 oz./26.6 cl./266 ml.
H3% T3% B3% D3%
3 doz./35# • 1.07 cu. ft.
SCC 831104



Rocks
No. 15232 +
10 oz./29.6 cl./296 ml.
H3% T3% B2% D3%
3 doz./27# • 1.19 cu. ft.
SCC 105373



Rocks
No. 5279
9 oz./26.6 cl./266 ml.
H3% T3 B2% D3
3 doz./34# • .91 cu. ft.
SCC 766468



Rocks
No. 15809 +
9 oz./26.6 cl./266 ml.
H3% T3% B2% D3½
1 doz./8# • .45 cu. ft.
SCC 391896



Rocks
No. 15710 +
9 oz./26.6 cl./266 ml.
H3% T3% B2% D3½
1 doz./8# • .45 cu. ft.
SCC 367112



Rocks
No. 917CD ▲ ●
11 oz./32.5 cl./325 ml.
H3% T3% B3% D3%
3 doz./26# • 1.06 cu. ft.
SCC 756513



Rocks
No. 12037 ★ ●
10 oz./29.6 cl./296 ml.
H3% T3% B2% D3%
1 doz./8# • .33 cu. ft.
SCC 687180



Old Fashioned
No. 23386 ●
10¼ oz./30.3 cl./303 ml.
H3% T3% B3% D3%
2 doz./16# • .69 cu. ft.
SCC 370181



Rocks
No. 9171CD ▲ ●
11 oz./32.5 cl./325 ml.
H3% T3% B3% D3%
3 doz./26# • 1.05 cu. ft.
SCC 087051



Rocks
No. 1514 ★ ●
7 oz./20.7 cl./207 ml.
H2% T3 B1% D3
3 doz./12# • .74 cu. ft.
SCC 410177



Rocks
No. 1513 ★ ●
9 oz./26.6 cl./266 ml.
H3% T3% B2 D3%
3 doz./16# • 1.0 cu. ft.
SCC 409751



Rocks
No. 1512 ★ ●
10½ oz./31.1 cl./311 ml.
H3% T3% B2 D3%
3 doz./16# • 1.08 cu. ft.
SCC 409133



Rocks
No. 12018 ★ ●
10 oz./29.6 cl./296 ml.
H3% T2% B2% D3%
1 doz./5# • .33 cu. ft.
SCC 686756



Room Tumbler
No. 494 ●
10 oz./29.6 cl./296 ml.
H3% T3% B2% D3%
1 doz./8# • .30 cu. ft.
SCC 121847



Room Tumbler
No. 135 ●
8 oz./23.7 cl./237 ml.
H3% T2% B2% D2%
4 doz./23# • 1.02 cu. ft.
SCC 369901



Water
No. 1910HT ★ ●
10 oz./29.6 cl./296 ml.
H3% T2% B2% D2%
4 doz./15# • 1.17 cu. ft.
SCC 369963



Hi-Ball
No. 125 ●
9 oz./26.6 cl./266 ml.
H4% T2% B2% D2%
4 doz./27# • 1.26 cu. ft.
SCC 369888