

BEVERAGE SOLUTIONS

From cold to hot beverage dispensing & service, TableCraft has a variety of solutions to fit your operation's needs. Our high quality beverage options are designed to keep beverage stations organized and your operation moving efficiently.

Scan QR code to view a video on our new Beverage Dispenser.

Refreshing Options

COLD BEVERAGE DISPENSERS | 118

Silhouette™ Beverage Dispensers...	118
Upscale Beverage Dispensers	118
Acrylic Beverage Dispenser.....	120
Plastic Stackable Dispenser	120
Touchless Faucets.....	121
Glass Beverage Dispensers	122
Decorative Glass	
Beverage Dispenser	122
Beverage Dispenser Stands.....	123
Single and Double	
Beverage Dispensers	124
Premium Beverage Dispensers.....	125
Dual Beverage Dispensers.....	125
Single & Slimline	
Beverage Dispensers	126

COLD BEVERAGE SERVERS | 127

Infusion Pitchers	127
Ice Core Pitchers	127
Premium Water Servers	127
Beverage Pitchers	127
Economy Servers	127
Beverage Carafes.....	128
Resealable Plastic Water Servers	128
Plastic Mason Jars	128
Authentic Collection™ Recycled	
Green Glass Water Servers	129
Resealable Glass Water Servers.....	129
To-Go Pouches.....	130

COUNTERTOP SOLUTIONS | 131

PLA and Paper Straws	131
Stir Stick & Straw Dispensers.....	132
Drip Trays	133
No Drip Faucet	133
Syrup Pump.....	133

BEVERAGE TUBS | 134

Single Wall Beverage TubS	134
Crackle Collection™ TubS	134
Bali Collection™ Beverage TubS	134
Remington Collection™	
Beverage TubS	134
Double Wall Beverage TubS	134
Brickhouse Collection™	134
Beverage Tub Sets	134

HOT BEVERAGE SERVERS & ACCESSORIES | 136

Coffee Urns	136
Swirl Carafes	137
Coffee Carafes	137
Coffee Decanters.....	137
Frothing Cups.....	138
Gooseneck Teapot.....	139
Bell Creamers.....	139
Coffee Scoops.....	139
Coffee Shakers and Shaker Sets	139



Scan QR code for pdf of proper faucet assembly on plastic and glass beverage dispensers.



Scan code or go to our YouTube channel to watch our Touchless Faucet video.



CATEGORY FEATURED PRODUCTS:

SINGLE & DOUBLE BEVERAGE DISPENSERS

12156 & 12157
PG. 124

ACRYLIC BEVERAGE DISPENSER

12295
PG. 120

FROTHING CUPS ▶

12056-12063
PG. 138





Infuse if you choose.

Infuse or chill

More serving options and opportunities from chilled to flavored beverages in our Upscale, Silhouette™ and Stackable plastic beverage dispensers. Assorted styles available in multiple capacities for small to large groups.



Removable infuser tube

Durable BPA-Free Tritan® reservoir



NSF® faucet

8½" faucet clearance

Item #	Description	Capacity	Min Order	List Price (\$)
SILHOUETTE™ BEVERAGE DISPENSERS—STAINLESS STEEL, BPA-FREE TRITAN® PLASTIC				
N175	NSF® Single, 11¼ x 12¾ x 23½" (8½" faucet clearance)	3½ Gal	1 ea	195.00 ea
UPSCALE BEVERAGE DISPENSERS—STAINLESS STEEL, BPA-FREE TRITAN® PLASTIC WITH NICKEL PLATED ABS FAUCET				
7515	Single, 8¼ x 9 x 17¼" (5¾" faucet clearance)	1¼ Gal	1 ea	195.00 ea
10450	Single, 9¾ x 12½ x 19¼" (6¾" faucet clearance)	2½ Gal	1 ea	244.00 ea
10451	Single, 11 x 13½ x 23⅝" (7¼" faucet clearance)	4½ Gal	1 ea	386.00 ea
75	Single, 10¾ x 11½ x 19½" (6¾" faucet clearance)	2½ Gal	1 ea	258.00 ea
85	Single, 12¼ x 13¼ x 24½" (7" faucet clearance)	5 Gal	1 ea	390.00 ea



7515



75



85



10450



10451

UPSCALE

Serve bulk beverages with our upscale beverage dispensers. Each dispenser features a Tritan® Reservoir with brushed stainless steel lid and base. Available in multiple capacities.

- Durable BPA-Free Tritan® Reservoir
- Removable stainless steel ice core and infuser tube
- Hand wash recommended



FAUCET BEVERAGE DISPENSER

10626 BDGF N175F 75F 75FM	Fits: 10961, 75 ,85, BDG1000, BDG2000, BDG3000, 10699, BAD1500, 10090, N175, 953, H953, 954, 955, 1053, 1054, 1055, 353DP, H353DP, 354DP, 356DP, TW53DP, TW33DP, & TW54DP
70F	Fits 70, 71 & 72
71F	Fits 71 & 72

See page 121 for faucets and other parts

5 Gallon capacity

Other capacities available

Hands free faucet option available (10626)



Durable BPA-Free Tritan® Reservoir

7" Faucet clearance



85



ACRYLIC BEVERAGE DISPENSER

Add character and charm to your drink station at your buffet or catered event with this stylish fluted acrylic beverage dispenser.

- Acrylic lid with silicone gasket
- Chrome faucet
- Conveniently packaged for cash & carry



Item #	Description	Capacity	Min Order	List Price (\$)
FLUTED BEVERAGE DISPENSER—ACRYLIC				
12295 ▶	Clear, Acrylic, 7¼ x 9½ x 12"	2 Gal	1 ea	56.00 ea

double ups



Features two complete dispensers; stack together or use independently



10961

BAD1500

STACKABLE BEVERAGE DISPENSERS



Item #	Description	Capacity	Min Order	List Price (\$)
PLASTIC STACKABLE BEVERAGE DISPENSERS				
BAD1500	9½ x 10½ x 13½" (4¾" faucet clearance)	1½ Gal	1 ea	52.56 ea
10961	Two-Tiered Stackable Beverage Dispenser, 12¼ x 9¾ x 15", (SAN)	(2) 1 Gal	1 ea	61.82 ea

REPLACEMENT FAUCETS

Fit various plastic and/or glass beverage dispensers



N175F



BDGF



75F



75FM



10626

REPLACEMENT PARTS FOR BEVERAGE DISPENSER 75



75C



75IC



75T



75R



75B

REPLACEMENT PARTS FOR BEVERAGE DISPENSER 85



85C



85FH



85IC



85T



85R



85B

Item #	Description	Min Order	List Price (\$)
REPLACEMENT PARTS (Not in Cash & Carry packaging)			
N175F	NSF® Faucet for N175, Polypropylene (Fits ALL Glass and Plastic Beverage Dispensers)	1 ea	18.22 ea
BDGF	Faucet for BAD1500 and BDG Glass Beverage Dispensers	1 ea	8.48 ea
75F	Heavy Duty Nickel Plated ABS (Fits ALL Glass and Plastic Beverage Dispensers)	1 ea	22.66 ea
75G	Gasket Set for 75 & 85	1 ea	5.48 ea
75N	Nut for 75F Faucet for 75 & 85	1 ea	3.14 ea
10626	Universal Faucet, Black (Fits ALL Plastic & Glass Beverage Dispensers)	1 ea	4.46 ea
75FM	Universal Stainless Steel Faucet, (Fits ALL Glass and Plastic Beverage Dispensers)	1 ea	29.86 ea
85FH	Heavy Duty Faucet for 85, Black	1 ea	52.80 ea
75B	Base for 75, S/S	1 ea	127.00 ea

Item #	Description	Min Order	List Price (\$)
REPLACEMENT PARTS (Not in Cash & Carry packaging)			
75C	Cover for 75, S/S	1 ea	35.90 ea
75IC	Infuser for 75	1 ea	52.74 ea
75R	2.5 Gal Reservoir for 75, BPA-Free	1 ea	114.02 ea
175INF	Infuser for 175 & N175, Tritan™ BPA-Free	1 ea	12.98 ea
175LID	Lid, S/S (For 175 & N175) Includes Plastic Insert	1 ea	25.96 ea
175R	Reservoir for 175 and N175, BPA-Free	1 ea	91.02 ea
175SB	Base, S/S for 175 & N175	1 ea	173.04 ea
75T	Ice Core Insert, S/S for 75	1 ea	29.56 ea
85B	Base, S/S for 85	1 ea	126.70 ea
85C	Cover for 85, S/S	1 ea	44.34 ea
85IC	Infuser for 85	1 ea	88.92 ea
85R	5 Gal Reservoir for 85, BPA-Free	1 ea	173.14 ea
85T	Ice Core Insert, S/S for 85	1 ea	38.00 ea

Just fill to Refresh...



BDG1000 Dispenser



BDG2000 Dispenser



BDG3000 Dispenser



10090 Dispenser



10699 Dispenser

GLASS BEVERAGE DISPENSERS



Choose from a variety of styles: Beehive™, Rustic Country™, Mason Jar, Industrial Collection™ and our Decorative Glassware—mix and match with our range of bases to fit the style of your presentation. Each dispenser brings character and charm to your drink station. Select dispensers include infusion and ice cores (see descriptions below). Chalkboard necklaces are included for labeling your drinks (excludes 10699 Decorative Glass Beverage Dispenser).



CASH & CARRY

All of our glass beverage dispensers are conveniently packaged for Cash & Carry

Item #	Description	Capacity	Min Order	List Price (\$)
CLEAR GLASS BEVERAGE DISPENSERS				
BDG1000	Beehive™, Ice Core, Infuser and Black Chalkboard Necklace, 9 x 10¾ x 14½"	2½ Gal	1 ea	86.00 ea
BDG2000	Rustic Country™ Resealable Clip-Top Lid, Ice Core, Infuser and Black Chalkboard Necklace, 8¼ x 10½ x 14"	2½ Gal	1 ea	86.00 ea
BDG3000	Mason Jar, Ice Core, Infuser and Black Chalkboard Necklace, 7¾ x 10¼ x 12½"	2 Gal	1 ea	86.00 ea
10090	Industrial Collection™, Ice Core, Infuser and Black Chalkboard Necklace, 8 x 10 x 12¾"	2 Gal	1 ea	82.00 ea
10699	Decorative Glass, 8½ x 10¼ x 14½"	2 Gal	1 ea	75.60 ea
CLEAR GLASS BEVERAGE DISPENSERS REPLACEMENT PARTS (SEE RIGHT)				
10173	Faucet for 10090, Black Plated Plastic		1 ea	8.60 ea
10626	Universal Faucet, Black (Fits ALL Glass and Plastic Beverage Dispensers)		1 ea	4.46 ea
10174	Lid for 10090, Black Coated Tin, 5¼" dia x ¾"		1 ea	7.84 ea
BDGF	Faucet for BAD1500, BDG1000, BDG2000, & BDG3000, Chrome Plated Plastic		1 ea	8.08 ea
BDG2000G	Rustic Country Gasket Only		1 ea	1.44 ea
BDG2000T	Top, Gasket and Wire Assembly Included (BDG2000)		1 ea	12.36 ea
BDG3000T	Top for Mason Jar™ Glass Dispenser (BDG3000)		1 ea	4.12 ea
BDGINFCORE	Ice Core and Infuser for BDG1000 & BDG3000		1 ea	24.72 ea



...Accessorize to Elevate.

GLASS BEVERAGE DISPENSER ACCESSORIES



Elevate your beverage service! Our stands fit our range of glass beverage dispensers and are available in many options to match with our existing buffet risers and crates to create a consistent look on the serving presentation.



(BDGTUB) doubles as a 1 1/2 gallon ice tub. More options on pages 134



10755



10756

Item #	Description	Min Order	List Price (\$)
CLEAR GLASS BEVERAGE DISPENSERS STANDS			
*BDGTUB	Round Beverage Tub/Base, Galvanized Steel, 9" x 9" x 7 1/4" (Fits BDG1000, BDG2000, BDG3000, and 10699, or any dispenser with a base diameter 7 3/4" or less)	1 ea	16.00 ea
BDGR1	Single Wire Glass Beverage Dispenser Stand/Rack, Black Powder Coated, (8 1/2" faucet clearance, Fits BDG1000, BDG2000, BDG3000, 10090 and 10699) (opposite page)	1 ea	43.00 ea
10262	Industrial Collection™ Dispenser Stand/Rack, Black Powder Coated Steel, (Fits 10090 and BDG2000)	1 ea	63.80 ea
10755	Bamboo Stand, 10" dia x 5 3/4" (4 5/8" faucet clearance, Fits BDG1000, BDG2000, BDG3000, 10090, 10699, or any dispensers with a base diameter of 8 3/4" or less)	1 ea	23.68 ea
10756	Black Pinewood Stand, 10" dia x 5 3/4" (4 5/8" faucet clearance, Fits BDG1000, BDG2000, BDG3000, 10090, 10699, or any dispensers with a base diameter of 8 3/4" or less)	1 ea	21.88 ea
10757	Acacia Stand, 10" dia x 5 3/4" (4 5/8" faucet clearance, Fits BDG1000, BDG2000, BDG3000, 10090, 10699, or any dispensers with a base diameter of 8 3/4" or less)	1 ea	25.18 ea



BDGF



10626



10173



10174



BDG2000T



BDG3000T



BDGNFCORE

NEW

BEVERAGE DISPENSERS

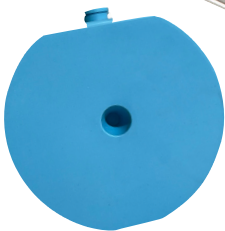
Perfect addition to your buffet for serving bulk beverages with these new single and double reservoir dispensers.

- Durable polycarbonate reservoir and stainless steel base
- Includes ice ring located below reservoir
- Faucets are not removable



12156

Item	Description	Capacity	Min Order	List Price (\$)
BEVERAGE DISPENSERS – POLYCARBONATE & STAINLESS STEEL				
12156 ▶	Single, 14¾ x 9 x 21"	2 Gal	1 ea	300.00 ea
a. 12157 ▶	Double, 14¾ x 17¾ x 21"	(2) 2 Gal	1 ea	600.00 ea
REPLACEMENT PART				
12509 ▶	Ice Ring for 12156 & 12157, 5¾" dia, HDPE	12 oz	1 ea	20.00 ea



12509

Single | Dual Dispensers

Scan code to view our video on our contactless faucets



PREMIUM

- An elegant addition to your buffet display
- Available in a single or double reservoir option

DUAL

- Perfect addition to your breakfast buffet
- Includes a removable reservoir with built-in drainable ice chamber to keep drinks cool

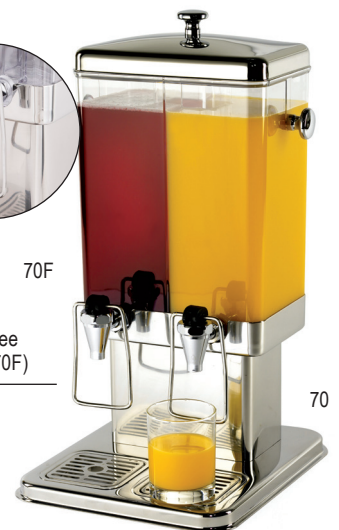


Removable ice core chills your beverages without diluting them

Item #	Description	Capacity	Min Order	List Price (\$)
PREMIUM BEVERAGE DISPENSERS—STAINLESS STEEL, POLYCARBONATE				
71	Single, 10¼ x 13½ x 22¾" (5½" faucet clearance)	2 Gal	1 ea	440.00 ea
72	Double, 22 x 13¾ x 21" (5½" faucet clearance)	(2) 2 Gal	1 ea	868.00 ea
REPLACEMENT PARTS & ACCESSORIES				
71F	Faucet for 71 & 72, Chrome Plated Metal	-	1 ea	43.38 ea
REPLACEMENT PARTS & ACCESSORIES				
DUAL BEVERAGE DISPENSERS—STAINLESS STEEL, POLYCARBONATE				
70	Double, 12 x 13½ x 23" (5½" faucet clearance)	(2) 1½ Gal	1 ea	810.00 ea
REPLACEMENT PARTS & ACCESSORIES				
70F	Faucet for 70, Chrome Plated Metal, Contact-free	-	1 ea	57.54 ea
REPLACEMENT PARTS				
70B	Polycarbonate Reservoir for 70	-	1 ea	314.00 ea
70HB	Handle for 70	-	1 ea	15.10 ea
70HF	Handle for Faucet for 70	-	1 ea	13.82 ea
71B	Reservoir for 71 & 72 Beverage Dispenser	-	1 ea	204.00 ea



70F
Features push bar contact-free faucets (70F)



A simple way to offer a variety of drinks in a limited serving area



Reservoir fits securely to tapered base, ensures stability and reduces risk of spillage

953



Slimline Dispensers' compact design saves valuable counter space

1054



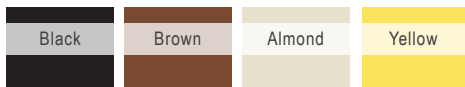
Touchless faucet (10626) will also fit single and double Slimline models



353DP



TW33DP



SINGLE & SLIMLINE BEVERAGE DISPENSERS

With detachable reservoirs and quality Tomlinson® faucets, these beverage dispensers keep drink stations simple to clean, easy to refill and quick to serve. Graduated measurements displayed on the side of reservoir for efficient and consistent filling.



955

Item #	Description	Capacity	Min Order	List Price (\$)
POLYPROPYLENE BEVERAGE DISPENSERS (7" FAUCET CLEARANCE)				
953	Single, 10 $\frac{1}{8}$ x 12 $\frac{1}{2}$ x 16 $\frac{3}{4}$ ", Black	3 Gal	1 ea	58.94 ea
*H953	Single, 10 $\frac{1}{8}$ x 12 $\frac{1}{2}$ x 16 $\frac{3}{4}$ ", Black	3 Gal	2 ea	64.00 ea
954	Single, 10 $\frac{1}{8}$ x 12 $\frac{1}{2}$ x 16 $\frac{3}{4}$ ", Brown	3 Gal	1 ea	58.94 ea
955	Single, 10 $\frac{1}{8}$ x 12 $\frac{1}{2}$ x 16 $\frac{3}{4}$ ", Yellow	3 Gal	1 ea	58.94 ea
1053	Single, 10 $\frac{1}{8}$ x 12 $\frac{1}{2}$ x 22 $\frac{1}{4}$ ", Black	5 Gal	1 ea	99.04 ea
1054	Single, 10 $\frac{1}{8}$ x 12 $\frac{1}{2}$ x 22 $\frac{1}{4}$ ", Brown	5 Gal	1 ea	99.04 ea
1055	Single, 10 $\frac{1}{8}$ x 12 $\frac{1}{2}$ x 22 $\frac{1}{4}$ ", Yellow	5 Gal	1 ea	99.04 ea
SLIMLINE POLYPROPYLENE BEVERAGE DISPENSERS (8$\frac{1}{4}$" FAUCET CLEARANCE)				
353DP	Single, 8 x 16 $\frac{1}{8}$ x 20 $\frac{1}{2}$ ", Black	3 Gal	1 ea	69.58 ea
*H353DP	Single, 8 x 16 $\frac{1}{8}$ x 20 $\frac{1}{2}$ ", Black	3 Gal	2 ea	80.00 ea
354DP	Single, 8 x 16 $\frac{1}{8}$ x 20 $\frac{1}{2}$ ", Brown	3 Gal	1 ea	69.58 ea
356DP	Single, 8 x 16 $\frac{1}{8}$ x 20 $\frac{1}{2}$ ", Almond	3 Gal	1 ea	69.58 ea
TW53DP	Double, 18 $\frac{1}{2}$ x 15 $\frac{1}{4}$ x 20 $\frac{1}{2}$ ", Black	(2) 3 Gal	1 ea	144.12 ea
TW33DP	Double, 18 $\frac{1}{2}$ x 15 $\frac{1}{4}$ x 20 $\frac{1}{2}$ ", Almond	(2) 3 Gal	1 ea	144.12 ea
TW54DP	Double, 18 $\frac{1}{2}$ x 15 $\frac{1}{4}$ x 20 $\frac{1}{2}$ ", Brown	(2) 3 Gal	1 ea	144.12 ea
REPLACEMENT PARTS & ACCESSORIES, POLYPROPYLENE				
953F	Standard Faucet Assembly, Black	-	1 ea	14.48 ea
953FW	Standard Faucet Assembly, White	-	1 ea	14.84 ea
852F	Heavy Duty Tomlinson® Faucet Assembly, Black	-	1 ea	42.44 ea
1053WB	Reservoir for 1053, 1054 & 1055	5 Gal	1 ea	29.26 ea
354WB	Reservoir for 353 & TW54 Dispensers	-	1 ea	27.00 ea
953WB	Reservoir for 953, 954 & 955	3 Gal	1 ea	27.00 ea
353B	Black Single Base for 353 Dispensers	-	1 ea	22.50 ea
354B	Brown Base for 354 Dispensers	-	1 ea	22.50 ea
356B	Almond Base for 356 Dispensers	-	1 ea	21.96 ea
TW33B	Almond Base for TW33 Dispensers	-	1 ea	35.02 ea
953B	Black Base for 953 & 1053	-	1 ea	20.26 ea
954B	Brown Base for 954 & 1054	-	1 ea	20.26 ea
955B	Yellow Base for 955 & 1055	-	1 ea	20.26 ea
353C	Black Cover for 353 Dispensers	-	1 ea	16.90 ea
354C	Brown Cover for 354 & TW54 Dispensers	-	1 ea	15.08 ea
356C	Almond Cover for 356 & TW33 Dispensers	-	1 ea	15.08 ea
953C	Black Cover for 953 & 1053	-	1 ea	20.26 ea
954C	Brown Cover for 954 & 1054	-	1 ea	20.26 ea
955C	Yellow Cover for 955 & 1055	-	1 ea	20.26 ea

*Available as Cash & Carry

INFUSION PITCHERS

- Infuser for fresh herbs and fruits to add a refreshing twist to water
- Disassembles for easy cleaning



ICE CORE PITCHER



PP322FIN



319

Item #	Description	Capacity	Min Order	List Price (\$)
INFUSION PITCHERS—SAN PLASTIC, CLEAR				
*PP322FIN	Infusion Pitcher with Lid, SAN Plastic	2 qt	1 ea	26.84 ea
ICE CORE PITCHERS—POLYCARBONATE				
319	Pitcher with Center Ice Core	2 qt	1 ea	51.58 ea
328	Pitcher with Center Ice Core	3 qt	1 ea	56.58 ea
REPLACEMENT PARTS				
319IC	Ice Core for 319 & 328	-	1 ea	9.34 ea
319INF	Infuser Tube for 319 & 328	-	1 ea	9.34 ea
319T	2-pc Lid for 319	-	1 ea	16.98 ea
328T	2-pc Lid for 328	-	1 ea	15.92 ea
PREMIUM WATER SERVERS—18/8 STAINLESS STEEL, MIRROR FINISH				
202	Pitcher	2 qt	1 ea	48.20 ea
203	Pitcher	3 qt	1 ea	57.48 ea
300	Pitcher, Ice Guard	2 qt	1 ea	50.00 ea
RP68	Remington Collection™ Pitcher with Base, Ice Guard	2 qt	1 ea	54.64 ea
BEVERAGE PITCHERS—SAN PLASTIC, CLEAR				
364	Clear Pitcher	60 oz	1 ea	11.80 ea
PP321	Pitcher with Lid	2 qt	1 ea	22.26 ea
ECONOMY SERVERS—POLYPROPYLENE				
144GRT	Granite, Black Lid	2½ qt	1 ea	12.44 ea
144W	White, Blue Lid	2½ qt	1 ea	12.44 ea

For full Remington Collection™ assortment, see page 79

PREMIUM SERVERS



202



300

Highly polished Stainless Steel

Remington Collection™ Pitcher features base, ice guard & rice pattern



RP68

BEVERAGE PITCHERS



364



PP321

Lid features free flow and ice guard

ECONOMY SERVERS

- Featuring 3-Way Sanitary Lid



144GRT



144W

BEVERAGE CARAFES



Lid snaps closed
for a tight seal



10715



10716



10717

RESEALABLE WATER SERVERS



Break-resistant carafes with a snap-seal-lids seal tightly to protect from contamination.



Gravity pour lid filters infused beverage out; keeps fruit in

10111

Glass Mason Jar with Shaker (MJS30)
see page 254



a

b

Item #	Description	Capacity	Min Order	List Price (\$)
POLYCARBONATE CARAFE WITH POLYPROPYLENE LID				
*10715	Carafe with Lid, Plastic	11 oz	1 ea	8.00 ea
*10716	Carafe with Lid, Plastic	19 oz	1 ea	11.36 ea
*10717	Carafe with Lid, Plastic	36 oz	1 ea	15.20 ea
TEMPLATE-STAINLESS STEEL				
10817	Template for 19 and 36 oz Carafes & 32 oz Squeeze Bottles, (3) 85mm Holes, Fits 1/3 Size Food Pans (not included)		1 ea	28.60 ea
BEVERAGE CARAFES-PLASTIC, CLEAR				
*10111	Gravity Pour Carafe with Strainer	1 1/4 Qt	1 ea	24.56 ea
*11799	Clear Carafe with Lid	34 oz	1 ea	14.56 ea
*11800	Honeycomb Carafe with Lid	34 oz	1 ea	14.56 ea
*11801	Fluted Carafe with Lid	34 oz	1 ea	14.56 ea
*11802	Tapered Carafe with Lid	34 oz	1 ea	15.60 ea
REPLACEMENT PARTS & ACCESSORIES				
10866	Replacement Lid for 10715 & 10716		1 ea	1.24 ea
10867	Replacement Lid for 10717		1 ea	1.24 ea
12287 ▶	Replacement Lid for 11799, 11800, 11801		1 ea	3.00 ea
12288 ▶	Replacement Lid for 11802		1 ea	3.00 ea

*Available as Cash & Carry



11799



11800



11801



11802

PLASTIC MASON JARS

Our multi-purpose plastic mason jars are ideal for serving and storing cocktails, juices, fruits, veggies, desserts, smoothies and more!

- Great for indoor and outdoor beverage serving
- Air-tight matte plated plastic lid allows for leak-safe storage
- For cold beverage and food serving and storage only
- Plated plastic tops also fit standard glass mason jars



Item #	Description	Capacity	Min Order	List Price (\$)
PLASTIC MASON JAR WITH LID				
a. 10858	Jar with Lid	8 oz	1 ea	7.06 ea
b. 10859	Jar with Lid	16 oz	1 ea	8.24 ea
10860	Jar with Lid	32 oz	1 ea	14.48 ea

GLASS WATER SERVERS

Upscale your beverage service.



AUTHENTIC COLLECTION™

Our recycled green glass bottles will enhance any water service or tabletop presentation. Decorative embellishments add vintage charm and eclectic style to every environment. Due to the nature of recycled glass, slight color variations, bubbles and small lines develop during molding; making each bottle unique.



Item #	Description	Capacity	Min Order	List Price (\$)
AUTHENTIC COLLECTION™ WATER SERVERS—RECYCLED GREEN GLASS				
6630	Apothecary Bottle	40 oz	1 ea	17.92 ea
6631	Bottle with Cork	34 oz	1 ea	17.14 ea
6632	Resealable Bottle	50 oz	1 ea	19.00 ea
a. 6621	Resealable Bottle	33 oz	6 ea	17.13 ea
REPLACEMENT PARTS				
6631C	Cork Stopper for 6631	—	1 ea	2.88 ea

You can see more of our Authentic Collection™ on page 146

RESEALABLE WATER SERVERS

Silicone seal and snap-lock closure for safe storage and transport.



Item #	Description	Capacity	Min Order	List Price (\$)
RESEALABLE WATER SERVERS—GLASS				
RGC34	Carafe	34 oz	6 ea	10.20 ea
RSB33	Bottle	34 oz	12 ea	8.34 ea





Custom imprinting available, contact your TableCraft representative for further information.

get it to-go

AVAILABLE FOR
CASH & CARRY

TO-GO BEVERAGE POUCHES

Pack up your house beverages to-go with TableCraft's plastic beverage pouches. They're a fun alternative to plastic, styrofoam, or a paper cup! Available in varying capacities to fill with your drink specials, juices, mixers, fruits or veggies and more! Perfect for carry out and to-go beverages for your customers to enjoy from the comforts of their own homes. Pouches also work well to store and seal food and ingredients to prepare take away meal kits. Translucent polyethylene pouch design opens so you can stand it up; making filling and prepping simple and easy.

- Cash & Carry packs available for 10 and 16 ounce capacity pouches
- Single use recyclable plastic
- Freezer safe
- For use with cold beverages and food items



10682

10883

10884



View our video on the To-Go Pouches

Works with our paper straws, see table below to check out coordinating straws that you can pack up with the To-Go Pouch!

Pouch:	Fits Straw(s):
10 oz	6mm Straws (7 ³ / ₄ " & 10")
16 oz	6mm Straws (7 ³ / ₄ " & 10")
32 oz	6mm Straws (7 ³ / ₄ " & 10")

Item #	Description	Count Per Pack	Min Order	List Price (\$)
TO-GO POUCHES, TRANSLUCENT POLYETHYLENE				
a.	10681 10 oz Pouch	100	1 pk	27.96 pk
b.	10682 16 oz Pouch	100	1 pk	39.08 pk
	10683 32 oz Pouch	100	1 pk	47.52 pk
CASH & CARRY TO-GO POUCHES, TRANSLUCENT POLYETHYLENE				
c.	*10883 10 oz Pouch	50	1 pk	16.70 pk
d.	*10884 16 oz Pouch	50	1 pk	24.04 pk

*Available as Cash & Carry
Straws not included

PLA & PAPER

STRAWS

- A variety of use serving options to choose from
- Paper straws are made from food grade materials
- PLA straws are a compostable plastic alternative to standard plastic straws
- See Buffet page 115 for more information



Individually wrapped straws promote safer more sanitary serving practices

Paper

PLA



Accessorize your tabletop or to-go cups with brightly colored and patterned straws

Item #	Description	Count Per Pack	Min Order	List Price (\$)
PLA STRAWS, UNWRAPPED				
100105	5 3/4" (5mm) Cocktail, Black	1000	20 pk	20.86 pk
700106	7 3/4" (8mm) Black	300	24 pk	18.14 pk
PLA STRAWS, INDIVIDUALLY WRAPPED				
100102	7 3/4" (5mm) Natural	300	24 pk	9.98 pk
100107	7 3/4" (5mm) Black	300	24 pk	9.98 pk
700102	7 3/4" (8mm) Natural	300	24 pk	19.94 pk
700107	7 3/4" (8mm) Black	300	24 pk	17.24 pk
700104	10" (8mm) Natural	300	24 pk	24.48 pk
700109	10" (8mm) Black	300	24 pk	24.48 pk
PAPER STRAWS, UNWRAPPED				
100110	5 3/4" (6mm) Black Striped, Cocktail	500	6 pk	14.88 pk
100138	5 3/4" (6mm) Solid Black, Cocktail	500	6 pk	14.88 pk
100132	7 3/4" (6mm) Solid Black	500	6 pk	19.62 pk
700132	7 3/4" (8mm) Solid Black	500	6 pk	27.32 pk
PAPER STRAWS, INDIVIDUALLY WRAPPED				
100113	7 3/4" (6mm) Black Striped	500	6 pk	22.10 pk
100121	7 3/4" (6mm) Blue Striped	500	6 pk	22.10 pk
100125	7 3/4" (6mm) Red Striped	500	12 pk	22.10 pk
100133	7 3/4" (6mm) Solid Black	500	6 pk	22.10 pk
100129	7 3/4" (6mm) Solid White	500	6 pk	22.10 pk
700133	7 3/4" (8mm) Solid Black	500	6 pk	31.74 pk
700129	7 3/4" (8mm) Solid White	500	6 pk	31.74 pk
100135	10" (6mm) Solid Black	500	6 pk	28.50 pk
100131	10" (6mm) Solid White	500	6 pk	28.50 pk
700135	10" (8mm) Solid Black	500	6 pk	43.52 pk
700131	10" (8mm) Solid White	500	6 pk	43.52 pk

Eco-friendly

i'll drink to that!

NATURAL

SOLID BLACK

SOLID WHITE

BLACK STRIPED

RED STRIPED

BLUE STRIPED



3 diameters to choose from (actual size)



5MM



6MM



8MM

For sanitary reasons, single use only

To Store and Serve (see next page)

Our classic Stainless Steel, two-sided straw dispenser (#237) holds up to 500 wrapped straws. Our cylinder-shape straw dispenser (H714CH) adds a great touch of nostalgia to any tabletop service at delis, diners, ice cream shops, etc. and holds 72 straws (up to 7 3/4" length). Both dispensers are easy to fill and clean. (Straws shown not included.)





STIR STICK & STRAW DISPENSERS

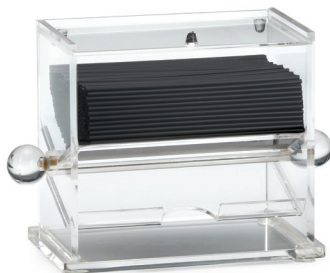
- Acrylic, stainless steel, and fluted glass options



H714CH

Works well with our 7 $\frac{3}{4}$ " straws (see page 131)

Ships with 65 red & white plastic straws



226



237

Item #	Description	Capacity	Min Order	List Price (\$)
STIR STICK & STRAW DISPENSERS				
a. 226	Stir Stick Dispenser, Acrylic, 6 $\frac{1}{2}$ x 3 $\frac{1}{2}$ x 5 $\frac{1}{2}$ " for 5 $\frac{1}{2}$ " stir sticks	–	1 ea	38.42 ea
237	Two-Sided Straw Dispenser, Stainless Steel, 9 $\frac{1}{2}$ x 7 x 7 $\frac{1}{4}$ " (Holds up to 500 individually wrapped 9 $\frac{1}{4}$ " straws)	–	1 ea	100.00 ea
*H714CH	Glass Straw Dispenser, Chrome Plated Insert, 4 $\frac{3}{8}$ " dia x 11 $\frac{1}{8}$ " (Holds up to 8 $\frac{1}{4}$ " straws) Includes 65 red & white stripped straws (shown left)	–	1 ea	27.00 ea

*Available as Cash & Carry



a

DRIP TRAYS

- Catches condensation, keeping surfaces free from water rings
- Anti-slip rubber options available to keep tray from sliding while in use



11172

2-Piece construction comes apart for easy cleaning



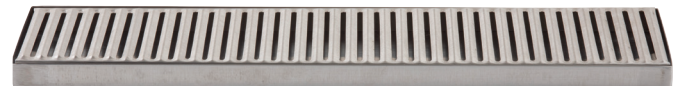
11171



6BK



View a video on the benefits of our Drip Trays!



10482

NO DRIP FAUCET

No drip faucet great for dispensing liquid from a "Bag-in-Box".

- Made from polypropylene
- BPA free
- Collar is made to fit 38 mm threads
- Hand wash only



12052

Also perfect for pouring consistent stream of sauces and condiments from "Bag-in-Box" packaging for front- or back-of-the-house



SYRUP PUMP

- ¼ oz measured shot, 28mm cap



66128

*Bottle not included

Item #	Description	Capacity	Min Order	List Price (\$)
DRIP TRAYS				
11171	Square, 2-Piece Drip Tray, 6" dia x 5/8"	-	1 ea	14.40 ea
a. 11172	Round, 2-Piece Drip Tray, 5 1/2" dia x 5/8"	-	1 ea	8.60 ea
6BK	Round Tray, 6 3/4" dia x 1"	-	1 ea	12.24 ea
10482	Rectangular, 19 x 4 1/8", Stainless Steel	-	1 ea	33.22 ea
NO DRIP FAUCET-POLYPROPYLENE (PP)				
12052	Gray, 1 1/8 x 3 1/4 x 3 3/8", For Bag in the Box	-	1 ea	40.00 ea
SYRUP PUMP				
66128	11" Dip Tube	¼ oz	1 ea	6.42 ea
*C66128	11" Dip Tube, Pack of 6	¼ oz	1 pk	38.20 pk

*Available as Cash & Carry

BEVERAGE TUBS

SINGLE OR DOUBLE WALL

- Galvanized Collection™ tubs feature pebbled texture
- Tubs feature a variety of materials and finishes: galvanized, crackle, pebbled, brushed, hammered, wave or rice pattern
- Designs feature handles for easy lifting

BEVERAGE TUB SETS

SETS

- Large beverage tub design for high volume beverage service
- Perfect for both indoor and outdoor events
- Brickhouse Collection™ Tub Set includes condensation tray to catch moisture and keep serving areas clean and reduce the risk of slipping hazards.
- Black metal stand (BTS2137) fits both single and double wall tubs



See page 79 in Buffet for full Remington Collection



GTSS2313N

Stand disassembles for easy storage; some assembly is required



BTSD21

BTS2137

Item #	Description	Capacity	Min Order	List Price (\$)
SINGLE WALL BEVERAGE TUBS—GALVANIZED STEEL				
BDGTUB	Tub/Base, Round, 9 $\frac{3}{8}$ " dia x 7 $\frac{3}{4}$ "	1 $\frac{1}{4}$ Gal	1 ea	16.00 ea
GT159	Oval, 15 x 8 $\frac{3}{8}$ x 7 $\frac{3}{8}$ ", Pebbled Finish	1 $\frac{1}{4}$ Gal	1 ea	51.92 ea
GT1515	Round, 15" dia x 7 $\frac{1}{8}$ ", Pebbled Finish	4 $\frac{1}{2}$ Gal	1 ea	67.60 ea
BT1914	Oval, 22 $\frac{3}{4}$ x 14 $\frac{1}{2}$ x 9 $\frac{1}{2}$ "	5 $\frac{1}{2}$ Gal	1 ea	62.30 ea
HBT1914	Oval, 22 $\frac{3}{4}$ x 14 $\frac{1}{2}$ x 9 $\frac{3}{4}$ "	5 $\frac{1}{2}$ Gal	6 ea	53.00 ea
GT2313	Oval, Pebbled Texture, 22 $\frac{3}{4}$ x 12 $\frac{1}{4}$ x 7 $\frac{1}{2}$ "	4.4 Gal	1 ea	80.04 ea
CRACKLE COLLECTION™ BEVERAGE TUB—ALUMINUM POWDER COATED				
11570	Black, 15 $\frac{1}{4}$ x 10 $\frac{3}{4}$ x 7 $\frac{1}{2}$ "	2 $\frac{1}{2}$ Gal	1 ea	112.50 ea
11571	Gold, 15 $\frac{1}{4}$ x 10 $\frac{3}{4}$ x 7 $\frac{1}{2}$ "	2 $\frac{1}{2}$ Gal	1 ea	112.50 ea
BALI COLLECTION™ BEVERAGE TUB—STAINLESS STEEL				
BT2013	Oval Tub, 20 $\frac{1}{2}$ x 13 $\frac{1}{2}$ x 8 $\frac{3}{4}$ "	4 Gal	1 ea	247.20 ea
BT1815	Oval Double Wall Tub, 18 x 15 $\frac{1}{4}$ x 8 $\frac{3}{4}$ "	5 Gal	1 ea	228.66 ea
REMINGTON COLLECTION™ DOUBLE WALL BEVERAGE TUBS				
BTB1610	Round Tub with Base, Rice Pattern, 15 $\frac{3}{4}$ " dia x 9 $\frac{1}{2}$ "	6 Gal	1 ea	306.94 ea
BTB2111	Round Tub with Base, Rice Pattern, 20 $\frac{1}{2}$ " dia x 11"	9 Gal	1 ea	405.82 ea
DOUBLE WALL BEVERAGE TUBS				
BT199	Round Tub, Brushed Finish, 19" dia x 9"	6 $\frac{1}{4}$ Gal	1 ea	358.44 ea
WBT14	Round Tub, Wave Pattern, 14 $\frac{1}{2}$ " dia x 7 $\frac{1}{2}$ "	3 Gal	1 ea	210.00 ea
WBT199	Round Tub, Wave Pattern, 19" dia x 9"	6 $\frac{1}{4}$ Gal	1 ea	331.00 ea
REPLACEMENT PARTS				
BTHDL	Handles For Beverage Tubs - BT199, WBT199, WBT14, BTB1610	-	1 ea	16.48 ea
BRICKHOUSE COLLECTION™ SINGLE WALL BEVERAGE TUB SET—STAINLESS STEEL, BLACK POWDER COATED STEEL				
GTSS2313N	Set includes Tub, Stand, Accessory & Condensation Trays (Overall 27 $\frac{1}{2}$ x 15 x 32")	12 $\frac{3}{4}$ Gal	1 ea	290.46 ea
REPLACEMENT PARTS & ACCESSORIES				
GTSS2313	Beverage Tub, 27 $\frac{1}{2}$ x 15 x 10 $\frac{3}{4}$ "	12 $\frac{3}{4}$ Gal	1 ea	100.94 ea
GTSS2313CT	Condensation Tray, 23 $\frac{3}{4}$ x 12 $\frac{3}{4}$ x 1 $\frac{1}{8}$ "	-	1 ea	43.26 ea
GTSS2313AT	Accessory Tray, 24 $\frac{3}{4}$ x 12 $\frac{1}{2}$ x 2 $\frac{1}{4}$ "	-	1 ea	43.26 ea
GTSS2313S	Beverage Tub Stand, 23 $\frac{1}{2}$ x 12 $\frac{3}{4}$ x 22 $\frac{1}{2}$ "	-	1 ea	128.76 ea
BEVERAGE TUB SET—STAINLESS STEEL, BLACK POWDER COATED STEEL				
BT2137N	Set includes Single Wall Tub & Stand, (Overall size, 21 $\frac{1}{4}$ " dia x 37 $\frac{1}{2}$ ")	11 Gal	1 ea	409.54 ea
BTSD21	Set includes Double Wall Tub & Stand, (Overall size, 21 $\frac{1}{4}$ " dia x 37 $\frac{1}{2}$ ")	7 Gal	1 ea	498.52 ea
REPLACEMENT PARTS & ACCESSORIES				
BTS2137	Black Metal Stand for BT21, BTSD21, 21 $\frac{1}{4}$ " dia x 30"	-	1 ea	173.04 ea

*For the full Galvanized Collection™, see page 198; for the full Remington Collection™, see page 79; for full Brickhouse Collection™, see page 196.

SINGLE WALL

Can also be used as a base for select beverage dispensers (see page 123)



BDGTUB



GT159



GT1515



BT1914



GT2313



11570



11571



BT2013



BT1815



See complete Crackle Collection on page 200

DOUBLE WALL



BTB1610



BT199



WBT14



WBT199



NEW

COFFEE URNS



Dress up your buffet line and ensure your coffee stays warm with these stainless steel coffee urns. Guests can serve themselves with ease with the no-drip faucet and the removable lid makes it easy to replenish the contents.

- Single wall stainless steel construction
- Available in 2 capacities - 3 and 5 gallon
- Intended for use with a chafer fuel burner (not included)
- 4¾" faucet clearance

12155



Item #	Description	Min Order	List Price (\$)
COFFEE URNS – POLISHED STAINLESS STEEL			
a. 12154	▶ 3 Gallon, 13¾" x 12¼" x 19¼"	1 ea	400.00 ea
12155	▶ 5 Gallon, 13¾" x 12¼" x 24½"	1 ea	525.00 ea



No-Drip Faucet

Easy to refill

INSULATED SWIRL CARAFES

- Triple wall insulation to keep drinks hot or cold up to 4 hours
- Features thumb-press for serving
- Color identification tags included with every carafe



Hot beverage essentials

Item #	Description	Capacity	Min Order	List Price (\$)
SWIRL CARAFES-PLASTIC				
1001302	White Carafe	20 oz	1 ea	23.80 ea
1001402	White Carafe	40 oz	1 ea	33.74 ea
1001502	White Carafe	64 oz	1 ea	49.26 ea
1001301	Black Carafe	20 oz	1 ea	23.80 ea
1001401	Black Carafe	40 oz	1 ea	33.74 ea
1001501	Black Carafe	64 oz	1 ea	49.26 ea
COFFEE CARAFES-STAINLESS STEEL AND BLACK PLASTIC ACCENTS				
10297	Carafe	34 oz	1 ea	37.94 ea
10298	Carafe	50 oz	1 ea	45.32 ea
10299	Carafe	68 oz	1 ea	50.24 ea
COFFEE DECANTERS-STAINLESS STEEL, PETG & POLYPROPYLENE				
18	Black Handle	64 oz	1 ea	44.90 ea
19	Orange Handle	64 oz	1 ea	44.90 ea
REPLACEMENT PARTS & ACCESSORIES				
10300	Replacement Lid for Coffee Carafes (10297-10299)		1 ea	4.72 ea
1002501	Replacement Lid for 20 oz Coffee Server, Black PPY (fits 1001301)	-	1 ea	6.68 ea
1002502	Replacement Lid for 20 oz Coffee Server, White PPY (fits 1001302)	-	1 ea	6.68 ea
1002601	Replacement Lid for 40 oz Coffee Server, Black PPY (fits 1001401)	-	1 ea	7.56 ea
1002602	Replacement Lid for 40 oz Coffee Server, White PPY (fits 1001402)	-	1 ea	7.24 ea
1002701	Replacement Lid for 64 oz Coffee Server, Black PPY (fits 1001501)	-	1 ea	7.80 ea
1002702	Replacement Lid for 64 oz Coffee Server, White PPY (fits 1001502)	-	1 ea	8.24 ea



COFFEE CARAFES

- Vacuum insulated to keep drinks hot or cold for up to 6 hours
- Thumb-press for easy serving
- Dishwasher safe, but hand wash is recommended



COFFEE DECANTERS

- Dishwasher safe, but hand wash is recommended





FROTHING CUP SERVERS



Upgrade your barista stand with our vintage and black frothing cups. Essential tool for frothing milk for lattes, cappuccinos, and more. These can also be used as a drinking vessel as well as for serving sides.

- Stainless steel base
- Available in 4 sizes in three different finishes
- Easy to clean, dishwasher safe

a



NEW



Item	Description	Min Order	List Price (\$)
FROTHING CUPS—STAINLESS STEEL W/VINTAGE FINISH, GOLD PVD HANDLE			
12056 ▶	14 oz Frothing Cup, 3 $\frac{1}{8}$ x 3 $\frac{1}{4}$ "	1 ea	22.00 ea
12057 ▶	18 oz Frothing Cup, 3 $\frac{3}{4}$ x 4 $\frac{1}{4}$ "	1 ea	28.50 ea
12058 ▶	24 oz Frothing Cup, 4 $\frac{1}{8}$ x 4 $\frac{1}{4}$ "	1 ea	34.00 ea
12059 ▶	36 oz Frothing Cup, 4 $\frac{1}{2}$ x 5 $\frac{1}{4}$ "	1 ea	42.00 ea
FROTHING CUPS—STAINLESS STEEL, BLACK NON-STICK PTFE FINISH			
12060 ▶	14 oz Frothing Cup, 3 $\frac{1}{8}$ x 3 $\frac{1}{4}$ "	1 ea	18.00 ea
a. 12061 ▶	18 oz Frothing Cup, 3 $\frac{3}{4}$ x 4 $\frac{1}{4}$ "	1 ea	25.00 ea
12062 ▶	24 oz Frothing Cup, 4 $\frac{1}{8}$ x 4 $\frac{1}{4}$ "	1 ea	30.00 ea
12063 ▶	36 oz Frothing Cup, 4 $\frac{1}{2}$ x 5 $\frac{1}{4}$ "	1 ea	40.00 ea
FROTHING CUPS—STAINLESS STEEL, MIRROR FINISH			
*2014	14 oz Frothing Cup, 3 $\frac{1}{4}$ " dia x 3 $\frac{1}{2}$ "	1 ea	16.62 ea
2024	24 oz Frothing Cup, 3 $\frac{3}{8}$ " dia x 4 $\frac{1}{4}$ "	1 ea	21.46 ea
2036	36 oz Frothing Cup, 4 $\frac{1}{4}$ " dia x 5"	1 ea	27.34 ea

*Available as Cash & Carry

GOOSENECK TEAPOT



GN10

Compact size is perfect for single service use

BELL CREAMERS



2305

Classic design variety of sizes

COFFEE SCOOPS



402

403

40401

Available in standard or long handled versions

HOT BEVERAGE ACCESSORIES

Item #	Description	Capacity	Min Order	List Price (\$)
GOOSENECK TEAPOT—STAINLESS STEEL				
GN10	Teapot, 6¼ x 3 x 3¼"	10 oz	1 ea	15.30 ea
BELL CREAMERS—STAINLESS STEEL				
2303	Creamer	3 oz	1 ea	4.04 ea
2305	Creamer	5 oz	1 ea	5.42 ea
2308	Creamer	8 oz	1 ea	7.94 ea
2312	Creamer	12 oz	1 ea	10.22 ea
COFFEE SCOOPS—STAINLESS STEEL				
401	Scoop	1 Tbsp	1 ea	5.12 ea
402	Scoop	2 Tbsp	1 ea	6.30 ea
403	Combo Scoop	1&2 Tbsp	1 ea	8.68 ea
40400	8½" Long Handle Scoop	1/2 Tbsp	1 ea	7.44 ea
40401	8¾" Long Handle Scoop	1 Tbsp	1 ea	7.86 ea
40402	9" Long Handle Scoop	2 Tbsp	1 ea	8.72 ea
COFFEE SHAKER SET—STAINLESS STEEL				
*11054	3-Piece Coffee Shaker Set (Cinnamon, Cocoa & Nutmeg Shakers, Storage Caps, Chrome Plated Metal Rack)	(3) 6 oz	1 ea	39.14 ea
*11055	4-Piece Coffee Shaker Set (Cinnamon, Cocoa, Nutmeg & Vanilla Shakers, Storage Caps, Chrome Plated Metal Rack)	(4) 6 oz	1 ea	49.44 ea
INDIVIDUAL COFFEE SHAKERS—STAINLESS STEEL & PLASTIC				
11050	Cinnamon Shaker w/Storage Cap	6 oz	1 ea	11.34 ea
11051	Cocoa Shaker w/Storage Cap	6 oz	1 ea	11.34 ea
11052	Nutmeg Shaker w/Storage Cap	6 oz	1 ea	11.34 ea
11053	Vanilla Shaker w/Storage Cap	6 oz	1 ea	11.34 ea

*Available as Cash & Carry



COFFEE SHAKER SET



11054

6 oz Stainless Steel Shaker Set is designed to organize your gourmet coffee service. Each shaker features engraved lids.



11055

COFFEE SHAKERS



Individual Shakers: Cinnamon, Cocoa, Nutmeg and Vanilla. Plastic storage caps included.



11050



11051



11052



11053