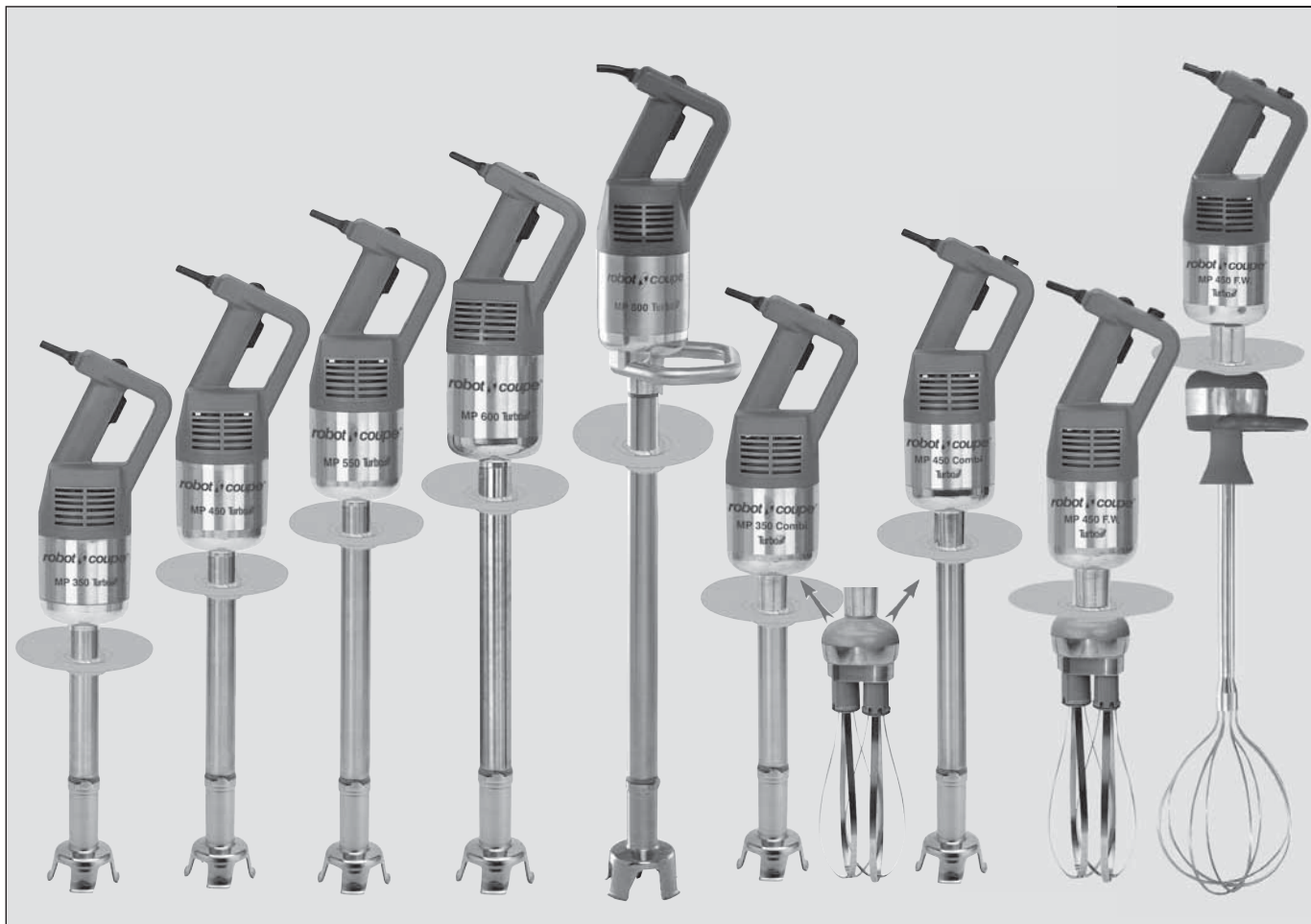


robot *coupe*®



- **MP 350 Turbo**
- **MP 350 Turbo V.V.**
- **MP 450 Turbo**
- **MP 450 Turbo V.V.**
- **MP 550 Turbo**
- **MP 600 Turbo**
- **MP 800 Turbo**
- **MP 350 Turbo Combi**
- **MP 450 Turbo Combi**
- **MP 450 Turbo FW**
- **MP 450 Turbo FW XL**

P.O. Box 16625, Jackson, MS 39236-6625

264 South Perkins St., Ridgeland, MS 39157

e-mail: robocoup@misnet.com - website: www.robotcoupeusa.com - Phone: 1-800-824-1646

CONTENTS

■ WARRANTY

■ IMPORTANT WARNING

- Unpacking
- Storage
- Power supply
- Specifications
- Dimensions
- Safety features
- Warning

■ INTRODUCTION TO YOUR NEW ROBOT-COUPE POWER MIXER

■ OPERATING THE POWER MIXER

- Operation
- Continuous operation
- Variable-speed operation
- Mashed potatoes function

■ WORKING POSITION

- Function blade
- Function whisk

■ ASSEMBLY/DISASSEMBLY

- Function blade
- Function whisk
- Mixing tool function

■ CLEANING

- Motor housing
- Tube and bell
- Blade
- Aluminum
- Plastic
- Whisk gearbox
- Whisks
- Mixing tool housing
- Mixing tool

■ MAINTENANCE

- Blade
- Tube Seal
- Seal Ring
- Whisks
- Cartridge

■ TROUBLE SHOOTING

■ SERVICE

■ TECHNICAL DATA

- Exploded views
- Electrical and wiring diagrams

ROBOT COUPE U.S.A., INC. LIMITED WARRANTY

YOUR NEW ROBOT COUPE PRODUCT IS WARRANTED TO THE ORIGINAL PURCHASER FOR A PERIOD OF ONE YEAR FROM THE DATE OF PURCHASE.

This LIMITED WARRANTY is against defects in the material and/or workmanship, and includes labor for replacement of defective parts, provided repairs are performed by an authorized service agency (see attached list).

The Customer must inform the Service Agency of the possibility of warranty coverage and provide a copy of the dated sales or delivery receipt BEFORE WARRANTY REPAIRS ARE BEGUN.

Replacement parts and accessories are warranted for ninety (90) days from the date of purchase when purchased separately and will be verified by dated sales receipt OR packing slip which lists that item.

All parts or accessories replaced under warranty must be returned to the Service Agency.

THE FOLLOWING ARE NOT COVERED BY THE ROBOT COUPE U.S.A. INC LIMITED WARRANTY :

- 1** - Damage caused by abuse, misuse, dropping, or other similar damage caused by or resulting from failure to follow assembly, operating, cleaning, user maintenance or storage instructions.
- 2** - Labor to sharpen and/or replacements for blades that have become blunt, chipped or worn after a normal or excessive period of use.
- 3** - Materials or labor to replace or repair scratched, stained, chipped, pitted, dented or discolored surfaces, blades, knives, attachments or accessories.
- 4** - Any alteration, addition, or repair that has not been carried out by the company or an approved service agency.
- 5** - Transportation of the appliance to or from an approved service agency.
- 6** - Labor charges to install or test new attachments or accessories (i.e., bowls, plates, blades, attachments), which have been replaced for any reason.

7 - The cost of changing direction-of-rotation of three-phase electric motors (Installer is responsible).

8 - SHIPPING DAMAGES. Visible and/or hidden damage is the responsibility of the freight carrier. The consignee must inform the carrier and consignor immediately, or upon discovery in the case of hidden defects.

KEEP ALL ORIGINAL CONTAINERS AND PACKING MATERIALS FOR CARRIER INSPECTION.

Neither ROBOT COUPE U.S.A., INC. nor its affiliated companies or any of its distributors, directors, agents, employees, or insurers will be liable for indirect damage, losses, or expenses linked to the appliance or the inability to use it. **The ROBOT COUPE U.S.A., INC. warranty is given expressly and in lieu of all other warranties, expressed or implied, for merchantability and for fitness toward a particular purpose and constitutes the only warranty made by ROBOT COUPE U.S.A., INC..**

IMPORTANT WARNING

WARNING
KEEP THESE INSTRUCTIONS
IN A SAFE PLACE

WARNING: In order to limit accidents such as electric shocks, personal injury or fire, and in order to limit material damage due to misuse of the appliance, please read these instructions carefully and follow them strictly. Reading the operating instructions will help you get to know your appliance and enable you to use the equipment correctly. The operation manual should be kept within easy access to all users for reference and should be read completely by all first time users of the machine.

UNPACKING

- Carefully remove the equipment from the packaging and take out all the boxes or packets containing attachments or specific items.
- Warning- Some parts are very sharp e.g.blade.Wear cutting gloves when handling the blade.**

STORAGE

- You are advised to install the wall bracket provided with the machine and to store your Power Mixer on it. Hang the mixer with the motor unit UP.

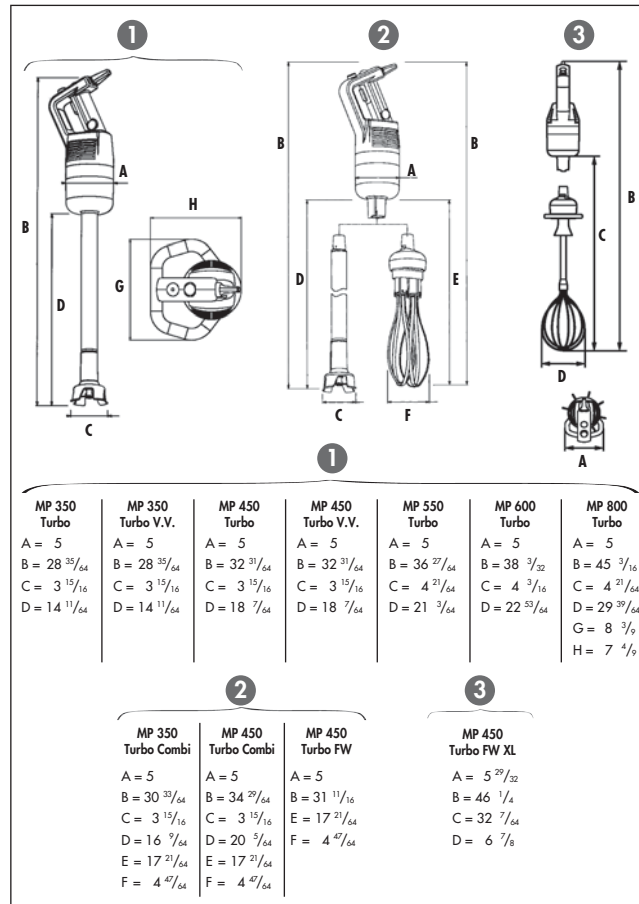
POWER SUPPLY

- Connect the mixer to 110-120 Volt 60 Hz Power supply.
- Connect the mixer only to Ground Fault Interrupt (GFI) Safety type outlet.
- Do not connect the mixer with extension type power cord.
- GFI type outlets protect the machine from expensive damage and protect the operator from serious injury or death.

SPECIFICATIONS

- MP 350 Turbo 120V/60Hz / 5,5 Amp. "Series B"
- MP 450 Turbo 120V/60Hz / 6 Amp. "Series B"
- MP 550 Turbo 120V/60Hz / 7 Amp. "Series B"
- MP 600 Turbo 120V/60Hz / 7,7 Amp. "Series B"
- MP 800 Turbo 120V/60Hz / 8,3 Amp. "Series B"
- MP 350 Turbo V.V. "Series B" • MP 350 Turbo Combi "Series B" 120V/60Hz / 5,5 Amp.
- MP 450 Turbo V.V. "Series B" • MP 450 Turbo Combi "Series B". • MP 450 Turbo FW "Series B" • MP 450 Turbo FW XL "Series B" • 120V/60Hz / 6 Amp.

DIMENSIONS (In Inches)



Blade Attachment Capacities

• Thanks to a very powerful motor, the MP 350 Turbo can process up to 50 quarts, the MP 450 Turbo up to 100 quarts, the MP 550 Turbo up to 200 quarts, the MP 600 Turbo up to 300 quarts and the MP 800 Turbo up to 400 quarts. The quality of the finished product is outstanding.

Whisk Attachment Capacities

- Using the whisk attachment all three models process from 2 to 50 egg whites and 30 kg of mashed potatoes or 60 litre of industrial puree.
- Each power mixer is supplied with a wall support for easy storage.

SAFETY FEATURES

• Safety on Control Switches :

This safety mechanism prevents any unintentional starting of the power mixer. Two buttons must be pressed to start the power mixer. See section ON OPERATING THE POWER MIXER (page 6).

• Safeties on motor thermal protection :

If the machine is overused, the thermal protection will stop the unit. In this case, wait for the unit to cool down (a period of up to 30 minutes) before restarting and proceed to the steps of THE OPERATING SECTION (page 6).

• No volt release safety (Supply failure) :

if there is a power failure or the machine is unplugged, the power mixer will not restart by itself. See section ON OPERATING THE POWER MIXER (page 6).

• Safeties on motor overload protection :

If there is an obstruction in the container (a spoon or utensil) or the machine is overused and becomes hot, the unit will stop. This stop indicates that the preparation is too thick or is not adapted for a power mixer. To restart the machine, see section ON OPERATING THE POWER MIXER (page 6).

INTRODUCTION TO YOUR NEW ROBOT-COUPÉ POWER MIXER

Robot-Coupe has developed a complete line of power mixers. The features of each are described in the table below.

Models	Variable Speed	Mixer attachment	Whisk attachment	Mixing tool attachment
MP 350 Turbo		•		
MP 350 Turbo V.V.	•	•		
MP 450 Turbo		•		
MP 450 Turbo V.V.	•	•		
MP 550 Turbo		•		
MP 600 Turbo		•		
MP 800 Turbo		•		
MP 350 Turbo Combi	•	•	•	
MP 450 Turbo Combi	•	•	•	
MP 450 Turbo FW	•		•	
MP 450 Turbo FW XL	•			•

The Robot-Coupe Power Mixers perform a host of culinary feats. The mixer attachment will allow you to make soups, vegetable purees and pulps while the whisk attachment is ideal for making pancake batter, mayonnaise, beaten egg whites, chocolate mousse, butter sauces, whipped cream or smooth fromage frais.

The variable speed function will enable you to adjust the speed to suit each preparation and to start the processing at a lower speed in order to reduce splashing.

The power mixer is easily assembled and disassembled for maintenance and cleaning.

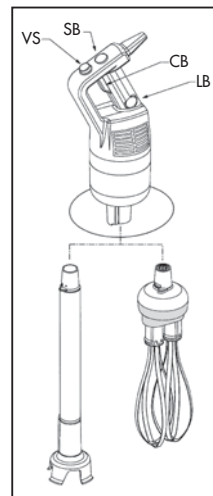
OPERATING THE POWER MIXER

• OPERATION

The power mixer is equipped with electrical current and temperature overload protection. If the power

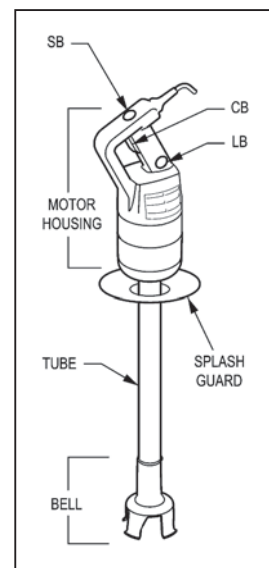
mixer stops unexpectedly you may try to restart it by following steps 3-5 below. If the power mixer does not restart, allow it to cool for a period of up to 30 minutes and the temperature overload will automatically reset. You should then be able to restart following steps 3-5 below.

1. Check that the control button (CB) is in the released position.
2. Connect the cord to the power supply
3. Put the tube into the product **with the bell completely immersed and the splash guard in place.**
4. Press and hold down the safety button (SB).
5. Press the control button (CB) and the power mixer will start.
6. Release the safety button (SB).
7. To stop the power mixer, release the control button (CB).



• CONTINUOUS OPERATION

8. Follow steps 1-6 above, then : While the control button (CB) is pressed, press the locking button (LB).
9. Release the control button (CB).
10. Release the locking button (LB), and the power mixer will run continuously.
11. To stop the power mixer, press and release the control button (CB).



• VARIABLE-SPEED OPERATION

Follow steps 1 to 6 above, then change the speed of the motor by turning the button (VS) toward the maximum or minimum as required.

It is advisable to start at a low speed when using the whisk.

Principal of automatic speed regulation : Once you have selected the right speed, allow the mixer to run on it's own. The speed will remain the same, even if the consistency of the product changes.

• MASHED POTATOES FUNCTION

(MP 350 Turbo Combi, MP 450 Turbo Combi, MP 450 Turbo FW).



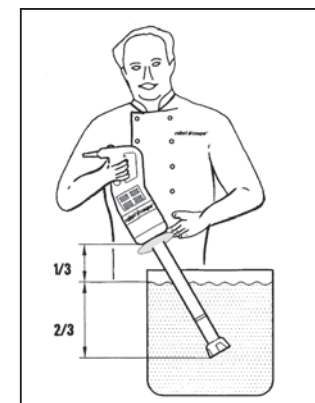
A self-regulating speed system has been specially developed for pureeing tasks using the whisk.

A white circle marked on the speed variation switch indicates the speed dedicated to mashed potatoes preparation. To reach this speed, turn the knob counterclockwise until it stops and a slight detent is felt . Under load the mixer will stop and start at one seconds intervals.

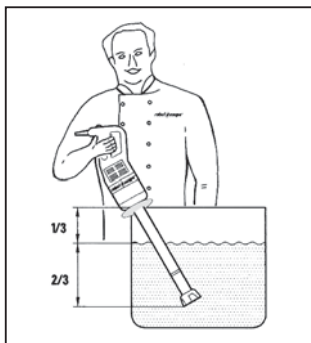
WORKING POSITION

• BLADE FUNCTION

1) Hold the power mixer firmly by the handle and the bottom of the motor base and tilt it at a slight angle. Move the mixer around in the container for complete processing.

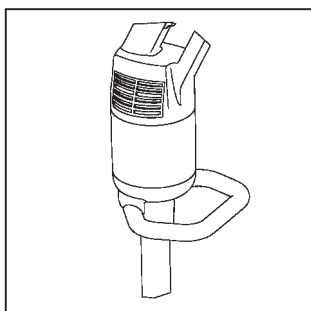


2) The power mixer can be rested against the rim of the container but must be tilted so that it does not touch the bottom of the container.

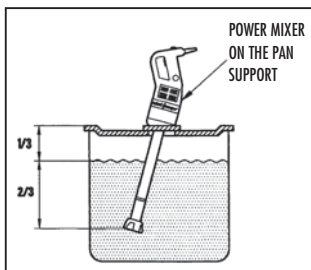


MP 800 Turbo.

An handle which will help you to have a good grip and facilitate the moving of the machine.



3) If using the power mixer support (optional accessory), on the top of the container, the power mixer should be positioned in the middle of the support and at a slight angle.



Do not operate the power mixer with **the bell straight up-and-down against the bottom of the container**

4) **The splashguard should always be in place.**

5) For optimum efficiency two thirds $\frac{2}{3}$ of the tube should be immersed in the product.

6) **Always make sure that the bell is completely immersed to avoid splashing and that the ventilation openings in the motor housing do not come into contact with any liquid !**

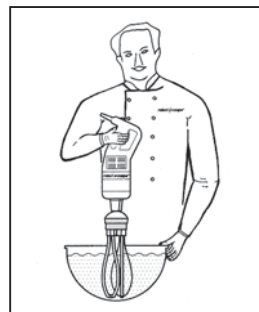
• WHISK FUNCTION

We recommend that you hold the power mixer by the handle and the bottom of the motor unit.

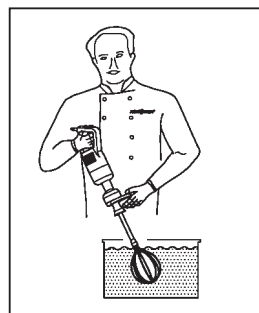


You can also hold the appliance by the handle with one hand, leaving the other hand free to hold the bowl, if necessary.

While processing we recommend that you move the whisk around in the bowl, in order to ensure that the mixture is completely homogeneous.



We strongly advise you to keep the whisk from touching the sides of the bowl. For maximum efficiency, at least one-fifth of the whisk length should be immersed. We also strongly advise you to start the processing at a low speed.



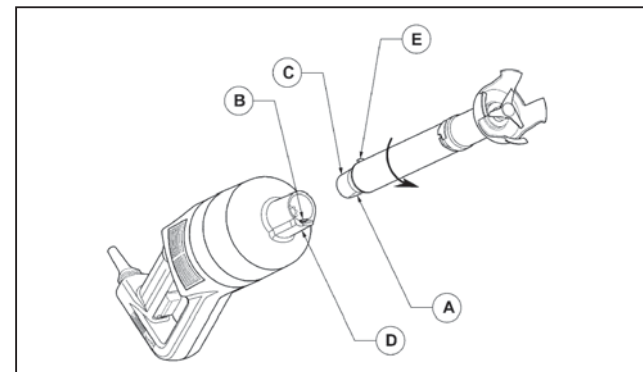
Handle conveniently located on the mixing tool for a better grip.



ASSEMBLY / DISASSEMBLY

• BLADE FUNCTION

Attaching the tube to the motor unit, (Except for MP 350 Turbo, MP 450 Turbo, MP 550 Turbo, MP 600 Turbo).

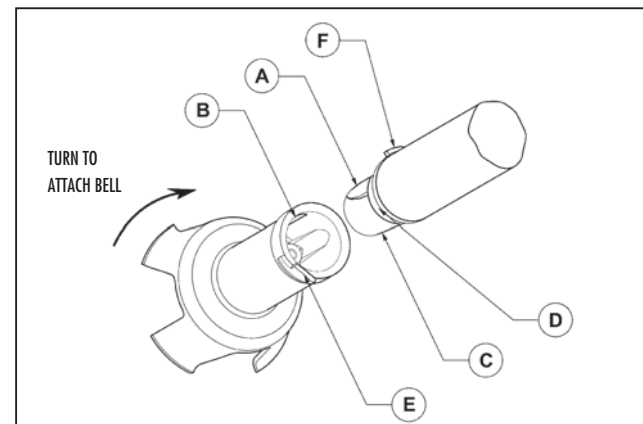


- **Unplug the power mixer.**
- Unplug the machine then, align the flat side of **(A)** the conical part **(C)** of the tube with catch **(B)** in the aluminum casing.
- Insert the narrow portion of conical part **(C)** of the tube into the aluminum casing.
- Turn the tube in the direction of the arrow (see figure) until it is snugly in place.

Removing the tube from the casing

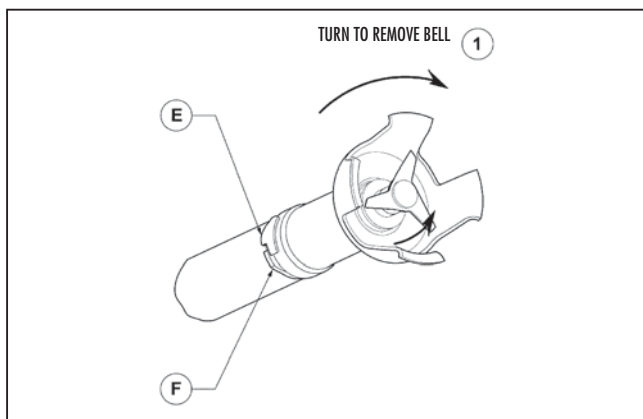
- **Unplug the power mixer.**
- Turn the tube in the opposite direction of that used to attach it.
- When it will not go any further, remove the tube from the conical part.

Attaching the bell to the tube



- **Unplug the power mixer.**
- Align the flat side of (A) the conical part of the tube with catch (B) on the inside of the bell.
- Insert the conical part (C) into the bell. With the washer touching the tube seal (D), turn the bell in the direction of the arrow (See figure) to lock the bell lug (E) and tube lug (F) snugly together.

Disassembling the bell from the tube

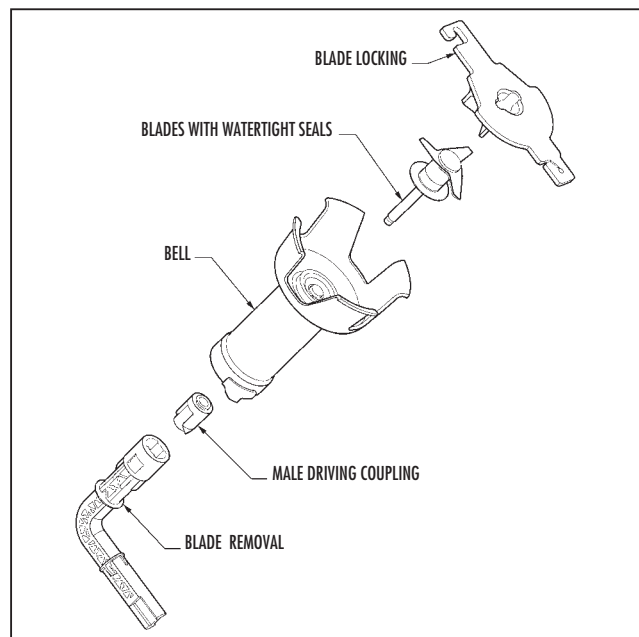


- **Unplug the power mixer.**
- Turn the bell in the direction of the arrow ① (see next figure) to separate the bell lug (E) from the tube lug (F).
- Remove the bell.

Removing the blades

Unplug the machine. Turn the bell in the direction of the arrow ① (see next figure) to separate the bell (E) from the foot lug (F). Remove the bell.

To safely remove the sharp blades, hold with the provided blade locking tool. Using the blade disassembling tool, unscrew the male drive coupling. As the drive coupling is unscrewed disengage the blade for easy cleaning.



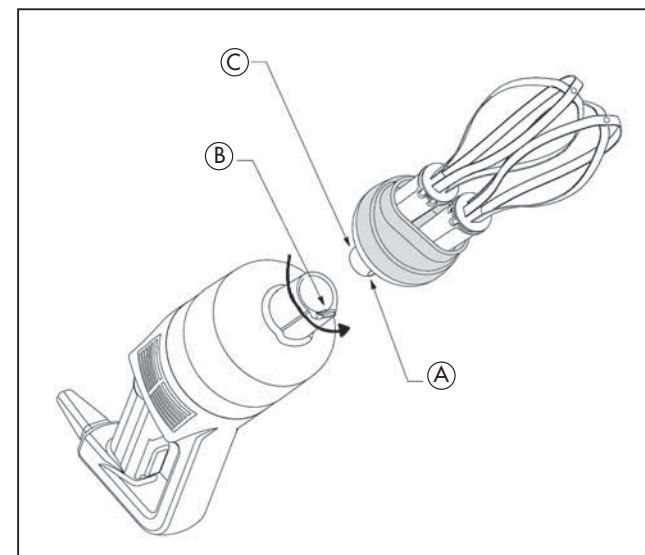
• WHISK FUNCTION (MP 350 Turbo Combi, MP 450 Turbo Combi, MP 450 Turbo FW)

Attaching the whisk gearbox to the motor unit

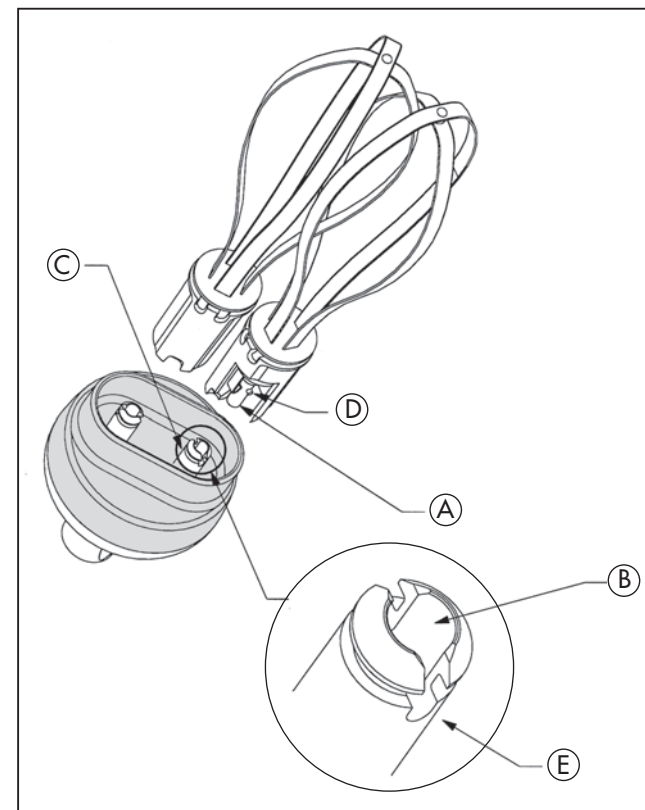
- **Unplug the power mixer.**
- Align the flat side (A) of the conical part (C) of the whisk gearbox with the catch (B) on the inside of the aluminum casing.
- Insert the conical part (C) of the whisk gearbox into the aluminum casing.
- Turn the whisk gearbox in the direction of the arrow (see figure) until it is snugly locked into place.

Removing the gearbox

- **Unplug the power mixer.**
- Turn the whisk gearbox in the opposite direction from that used to attach it.
- When it will go no further, remove the whisk gearbox from the aluminum casing.



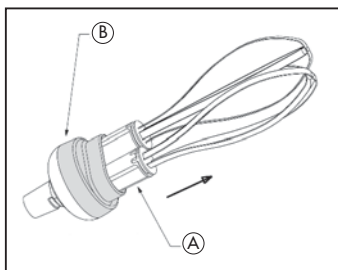
Fitting the whisk into the whisk gearbox



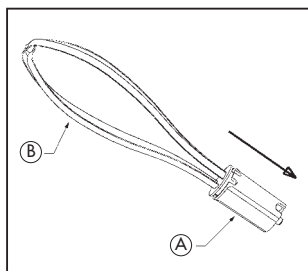
- Grasp the holder in one hand.
- With the other hand, take the first whisk and insert the shaft (A) into the bore (B) of the whisk gearbox drive shaft. Make sure the drive lugs (D) are properly aligned with the notches.
- As you push the whisk into the holder drive shaft (C), rotate it slightly in order to slide the drive lugs into the notches (D) of the drive shaft (C), thereby locking the whisk into place inside the shaft.
- To check that the whisk is properly fixed inside the the shaft (C), gently pull the metal wires.
- Repeat this procedure with the second whisk. If you cannot push it in properly, remove it, rotate it 90° and start again.

Removing the whisk from the whisk gearbox

While gripping the ejector (A) in one hand and the holder (B) in the other, pull the ejector in the direction of the arrow.



Removing the ejector

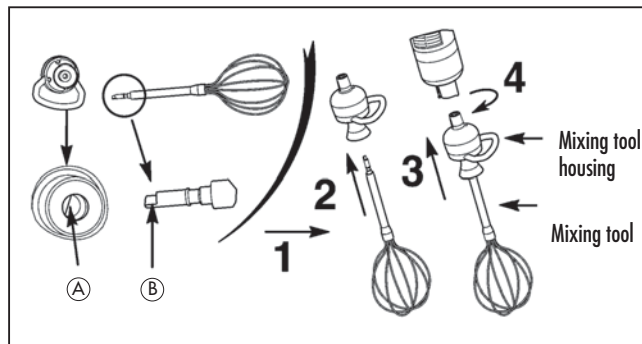


Hold the whisk by the wires (B) in one hand.

With the other hand, pull the ejector (A) in the direction of the arrow (see figure).

• MIXING TOOL FUNCTION (MP 450 Turbo FW XL)

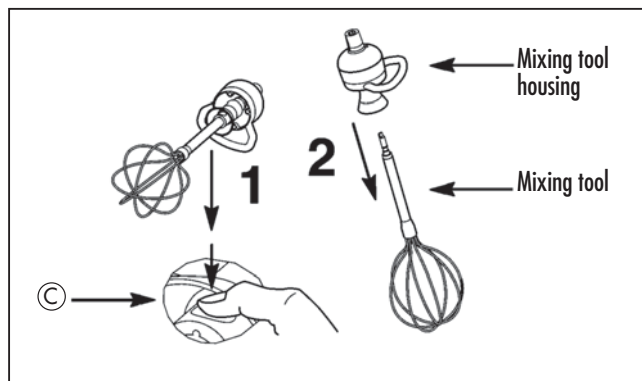
ATTACHING THE MIXING TOOL TO THE MIXING TOOL HOUSING:



Line the flat side of the mixing tool (B) up with the flat side of the housing (A).

Once the mixing tool has been attached to the housing, simply insert the latter into the motor unit, turning it in an anticlockwise direction.

DETACHING THE MIXING TOOL FROM ITS HOUSING:



To release the mixing tool from its housing, simply press the button (C). All that then remains to be done is to remove the housing from the motor unit.

CLEANING

! WARNING

- Always unplug the power mixer before cleaning it!
- Always dilute bleach according to the instructions on the label
- Never run the motor assembly through a dish machine.
- The type and concentration of the sanitation agent must comply with 21 CFR 178 1010 regulations.
- Clean according to local health department regulations.

• THE MOTOR HOUSING

The power mixer must be clean through all stages of production. Clean between each job using a detergent or disinfectant. Dilute the detergent / disinfectant following the instructions normally specified on it's packaging container. Use a cloth **lightly dampened (not dripping)** with the cleaning solution.

Do not allow liquid to come into contact with the electrical components contained within the housing. Be careful when cleaning around vents do not allow liquid to drip or seep into the housing. Use a cloth lightly dampened (not dripping) with water to remove detergent / disinfectant then dry using a clean cloth.

After using the power mixer in a hot mixture, cool the bottom of the tube in cold water before disassembling the bell from the tube.

Clean immediately after use to prevent product from sticking to surfaces.



WARNING

Never immerse motor housing and/or handle in liquid! The housing contains the electrical components and is not sealed against liquid. Contact with liquid can cause damage to the blender and serious injury to the operator.

• THE TUBE AND BELL

There are two ways to proceed :

- **Simple cleaning procedure after each different use**
 - Submerge the tube and bell in water and run for a few seconds to clean.
 - Unplug the power cord.

Complete cleaning procedure on a daily basis

- Unplug the power mixer and rinse the bell under a water tap.
- Remove the bell from the tube, then remove the blade (**wear cutting gloves**) ! Be careful to avoid damaging the surface of the blade shaft and the watertight seals.
- Always dilute the detergent/disinfectant (see above).
- Thoroughly dry all parts before reassembling.

• BLADE

The blade can be removed from the bell for thorough cleaning.

Always dry thoroughly to avoid spotting.

• ALUMINUM

Use soft-metal-safe cleaning agents!

• PLASTIC

Be careful, many cleaning agents are corrosive and are not safe for use on plastics!

Do not use strong alkaline detergent (having a high concentration of soda or ammonia).

• WHISK GEARBOX

Never immerse the whisk gearbox in water. Clean it with a cloth lightly dampened (not dripping).

Never run the whisk gearbox through a dishwasher.

• WHISKS

The whisks can be cleaned either by hand or in a dishwasher.

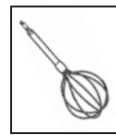
To ensure effective cleaning, always remove the whisk ejector.

• MIXING TOOL HOUSING



Never immerse the mixing tool housing in water or put it in the dishwasher. Instead, clean it with a slightly damp cloth.

• MIXING TOOL



The mixing tool can be washed either by hand or in the dishwasher. You can also clean it with a slightly damp cloth.

MAINTENANCE

• BLADE

Over time the blades will become worn and will need to be replaced. The washer and seals should also be replaced at this time. A blade service kit is available.

• TUBE SEAL

In order to maintain a watertight seal between the tube and bell, inspect the seal for wear and replace it if necessary.

• SEAL RING

The seal ring can be lubricated using a suitable food grade grease. In order to maintain a watertight seal, check the seal ring for wear and replace it if necessary.

• WHISKS

The performance of the whisks depends on the condition of the wires. The metal wires may become worn over time. In order to ensure optimum performance, they will need to be replaced. **Do not use a defective or damaged whisk!**

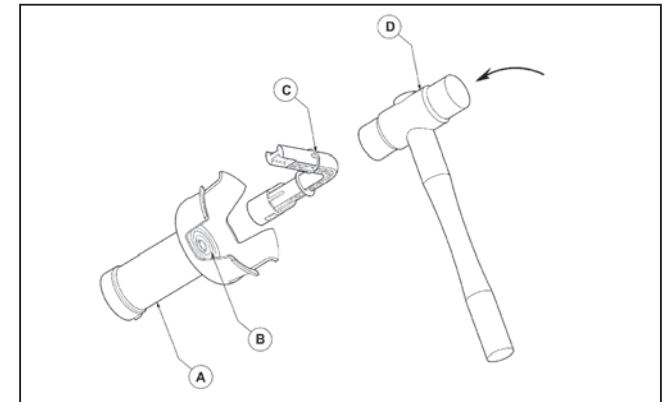
• CARTRIDGE

You need to change the cartridge :

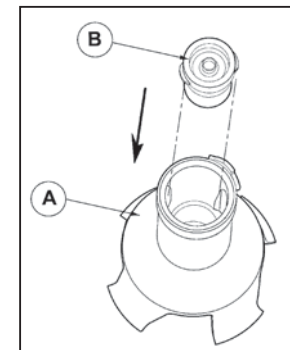
- If liquid starts seeping into the foot
- If there is any play in the blade

1) Cartridge dismantling :

Position the knife dismantling tool (C) on the cartridge (B). Remove the cartridge from its place by knocking (D) on the knife dismantling tool (C) with a plastic mallet.



2) Cartridge mounting :



Direct the ears of cartridge (B) in order to be aligned with the groove of the bell (A). Push the cartridge with the hand in the direction of arrow, then clip on into the bell thanks to the knife dismantling tool.

TROUBLE SHOOTING

• THE POWER MIXER DOES NOT START.

1. Did you follow the previous operating instructions ? (See section-Operating The Power Mixer).
2. Is the machine too hot ? Allow the power mixer to cool. Then retry.
3. Pull the plug and try another outlet.
4. Check the GFI trip indicator on your outlet. Check the circuit breaker.
5. Call local Robot Coupe authorized service agency.

• THE POWER MIXER STOPS DURING (WHILE) PROCESSING.

See the section On Operating the Power Mixer.

- The first paragraph describes the overload protection. It may be necessary to allow the machine to cool for up to 30 minutes before restarting.

If you cannot locate the cause of the problem

- Release the control button (CB).
- Unplug the power mixer.
- Are the blades free to rotate in the bell ?
- Is the drive shaft free to rotate ? To check this, unplug the power mixer, remove the bell and test the rotation of the end of the drive shaft manually.

Check the condition of the plug and the power cord.

• THE POWER MIXER STARTS TO SMELL HOT OR SMOKE

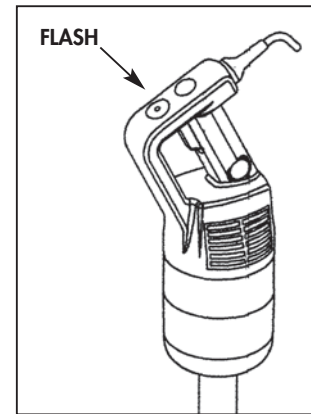
- Turn the power mixer off and unplug it.
- Call your local authorized service agency.

• THE MACHINE TRIPS THE GFI (Ground fault Interrupt) OUTLET

The motor or controls are wet or damaged. Do not attempt to use the mixer until it has been repaired by qualified service persons.

• OVERLOAD WARNING LIGHT (MP 600 Turbo and MP 800 Turbo)

In case of overload or use of the mixer in a too sticky preparation, the intensity warning flashes for 5 seconds to inform you that the motor will stop shortly. This stop indicates that the preparation in process is too thick or can not be made with a stick blender.



In this case, you can still restart your mixer. However, your machine will stop again if the consistency of the preparation is not modified.

! W A R N I N G

- **THE BLADES ARE SHARP!** It is recommended that cutting gloves be worn when handling the blades. Handle and store the blades with safety in mind.
- **Never try to defeat the safety mechanisms!**
- **Never put anything (utensils etc.) but food material near the blades on the power mixer!**
- **Never overload the power mixer!**
- **Never turn the power mixer on unless the bell is completely immersed in the product.**
- **Always unplug the power mixer before doing any cleaning or maintenance!**

SERVICE

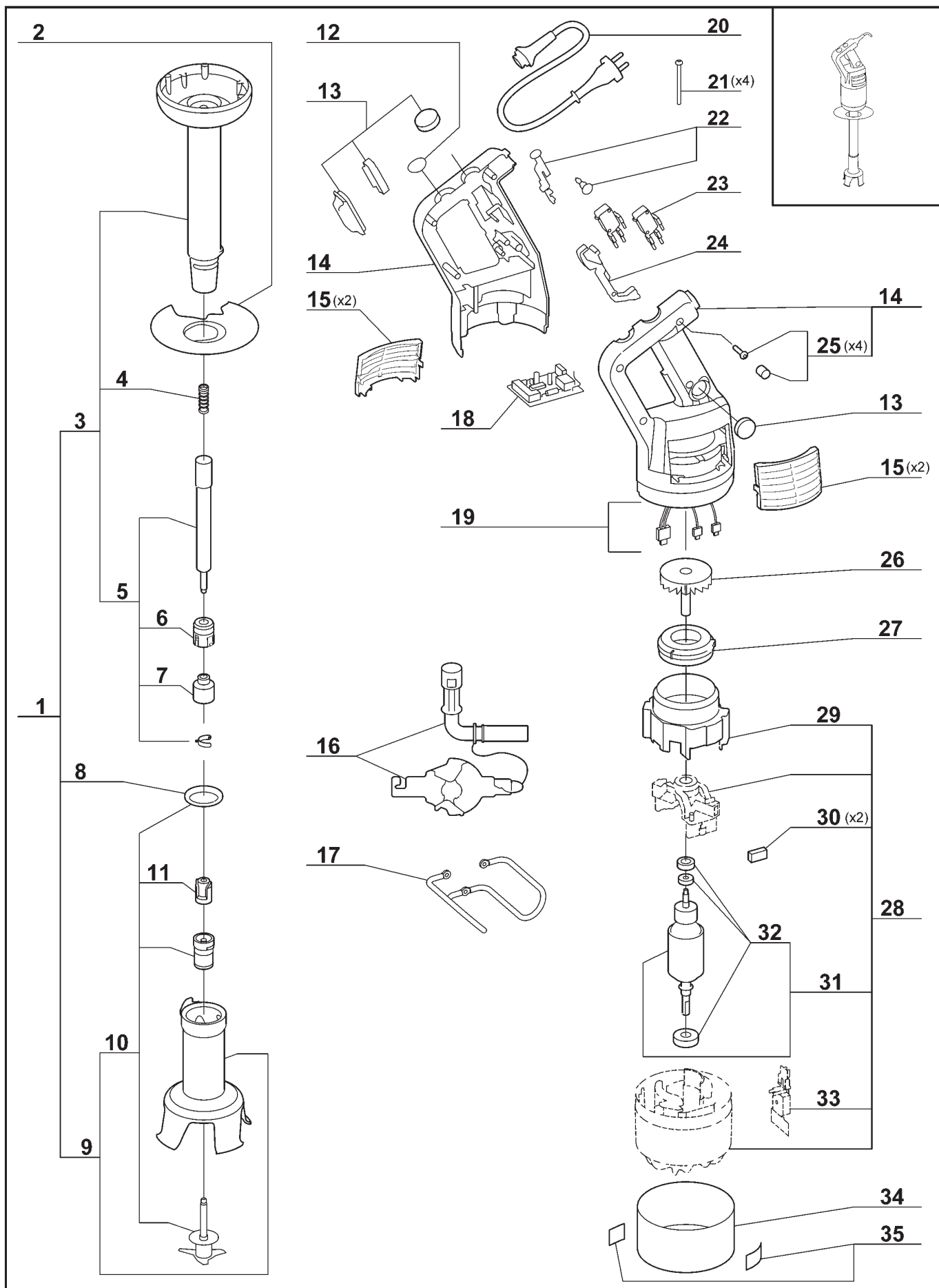
See warranty first then;

Should your unit require service, check with your distributor to see where local service is available. If not or if you wish your unit to be serviced at the factory, call for return instructions and ship the unit prepaid to our factory address.

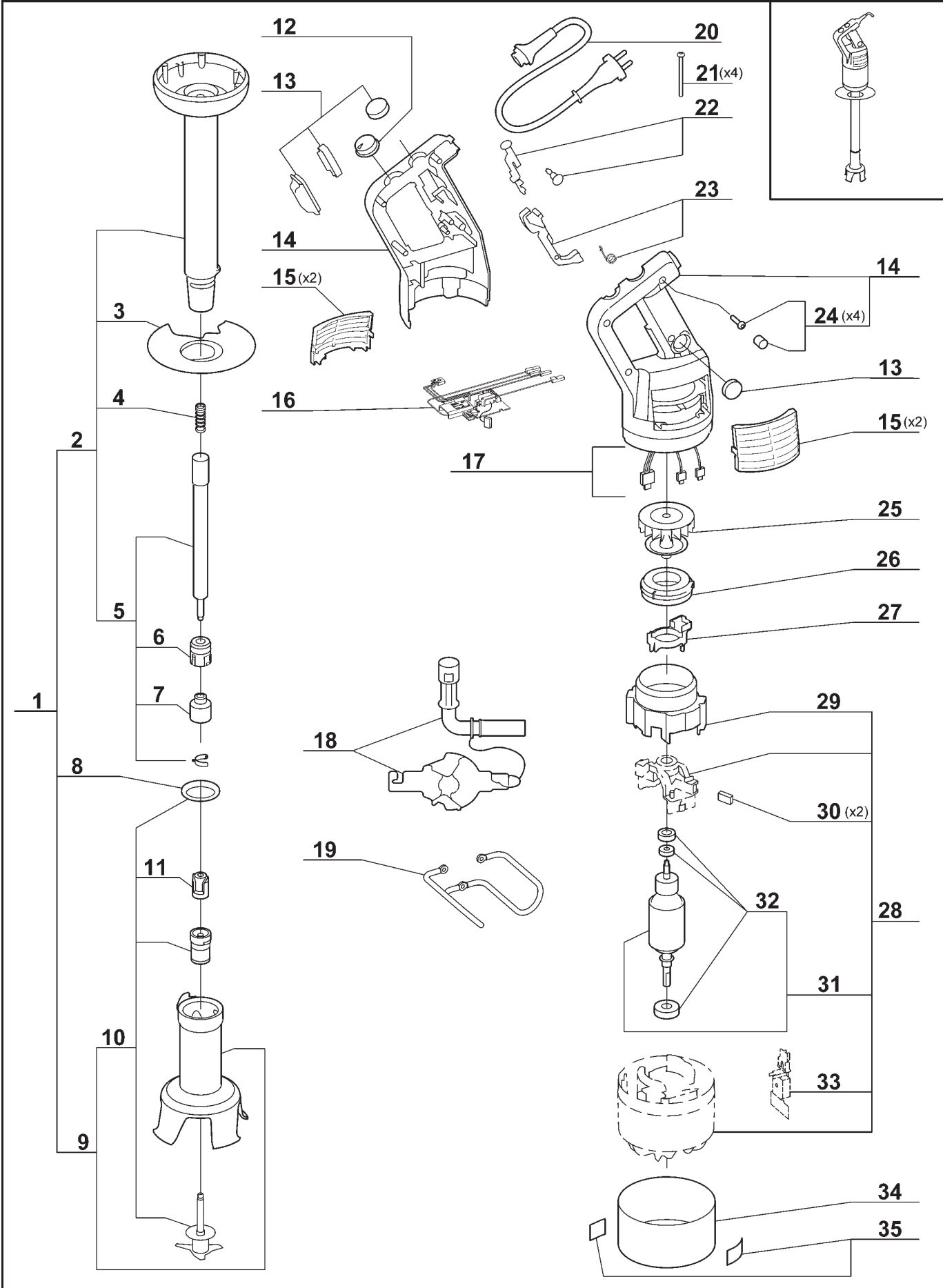
PH : 1-800-824-1646

Robot-Coupe USA, Inc
Service Department Repair
264 South Perkins Street
Ridgeland, MS 39157

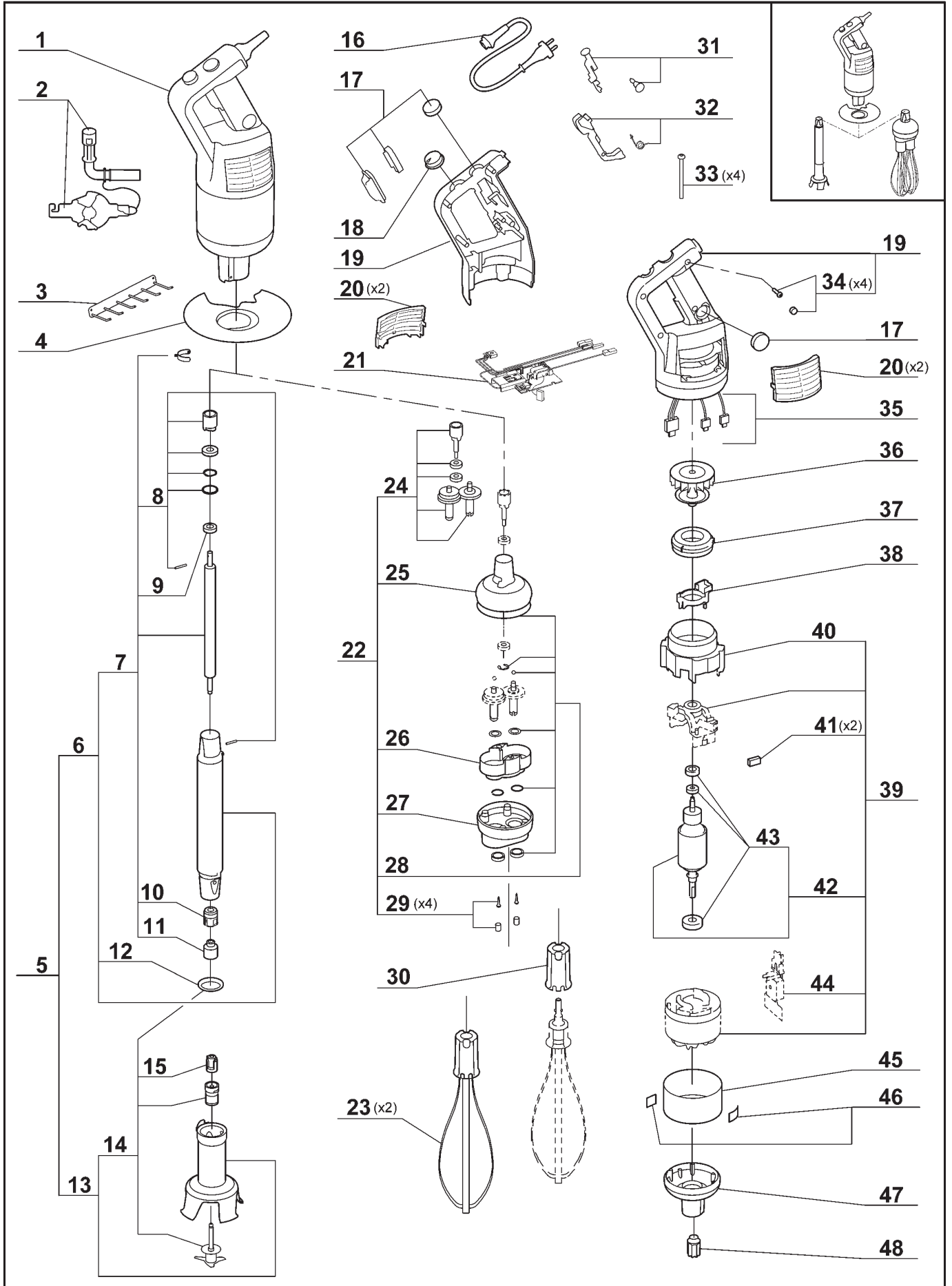
For service in Canada contact the Robot-Coupe USA factory for repair instructions.



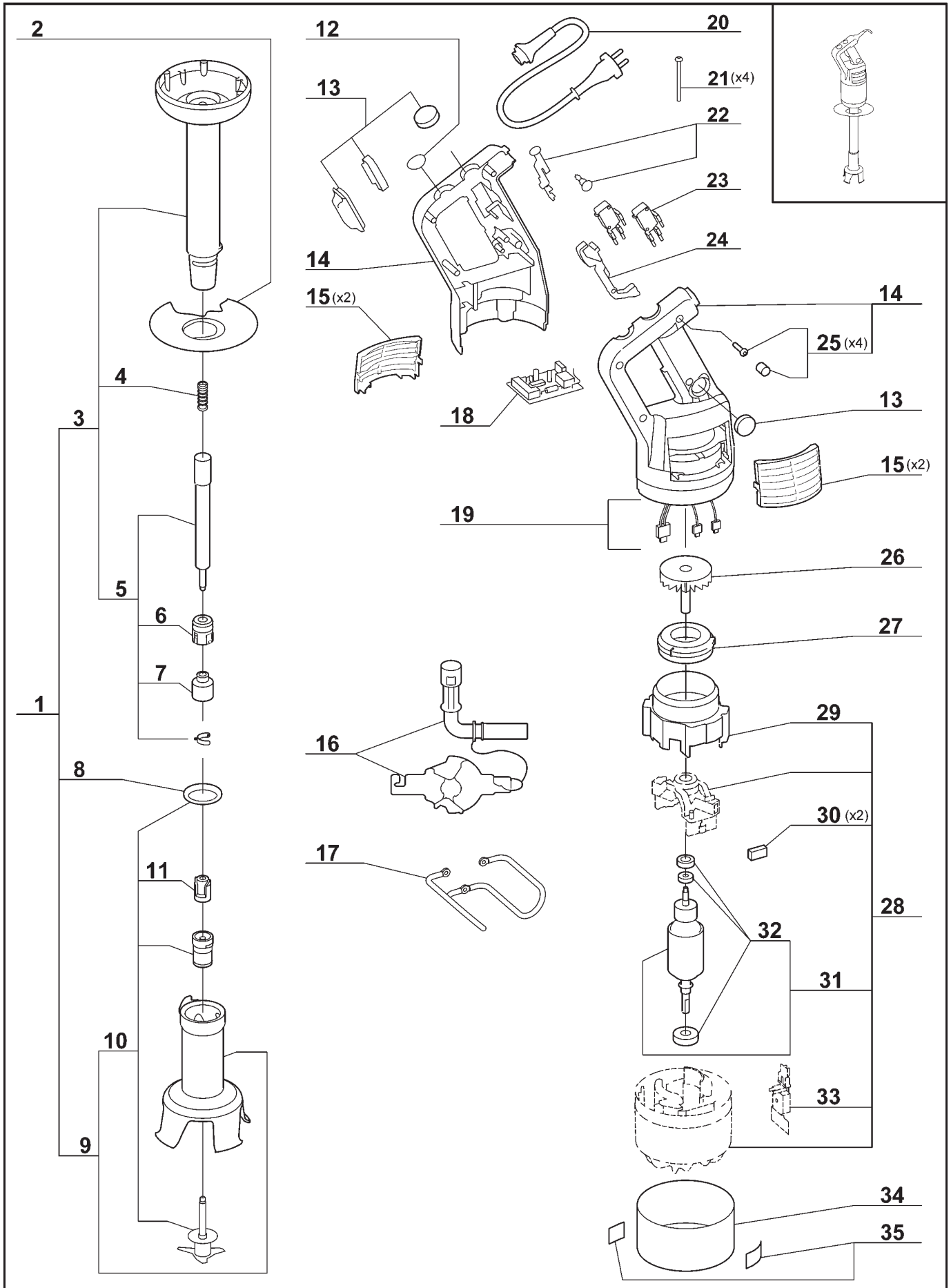
Index	Pièce / Part	Description	Désignation
1	MP 39 331	MP350A COMPLETE FOOT	PIED COMPLET MP350 A
2	MP 89 634	MP NSF PROTECTION	PROTECTION NSF MP
3	MP 39 332	MP350 A FOOT	PIED MP350 A EQUIPE
4	MP 89 619	MP FOOT SPRING	RESSORT PIED MP
5	MP 39 333	MP350 A DRIVING SHAFT	ARBRE D'ENTRAINEMENT MP350 A
6	MP 39 334	MPA FOOT BEARING RACE	BAGUE PIED MP A (roulement-joint à lèvres)
7	MP 89 624	STAINLESS STEEL DRIVING FRAME	CAGE D'ENTRAINEMENT INOX
8	MP 89 628	MP/CMP FOOT SEAL	JOINT DE PIED MP/CMP
9	MP 39 335	MP450 A BELL COVER	CLOCHE INOX MP450A EQU
10	MP 39 337	MP450 A BLADE	COUTEAU MP450 A
11	MP 89 625	MP ADRIVING HUB	MOYEU D'ENTRAINEMENT MP A
12	MP 89 360	CAP HANDLE KIT +SCREW+CAP SCREW	KIT BOUCHON POIGNEE +VIS+CACHE VIS
13	MP 89 533	MP CMP WATERPROOFNESS KIT	KIT ETANCHEITE MP CMP+VIS+CACHE VIS
14	MP 89 534	HANDLES MP (L+R)+SCREW+ CAP SCREW	POIGNEES MP (G+D)+VIS+CACHE
15	MP 89 508	MP VENT COVERS KIT (x2)	KIT GRILLES MP (x2)
16	MP 89 662	MP/CMP DISMOUNT TOOL	OUTIL DEMONTAGE MP/CMP
17	MP 89 629	MP WALL SUPPORT	SUPPORT MURAL MP
18	MP 89 464	MP T 120V USA CIRC BOARD+SCREW+CAP SCREW	PLATINE MP T 120V USA+VIS+CACHE VIS
19	MP 89 459	MP T 120V ELECT WIRING+SCREW+CAP SCREW	FILS ELEC MP T 120V+VIS+CACHE VIS
20	MP 89 397	MP 120V POWER CORD+SCREW+CAP SCREW	CABLE ALIM MP 120V+VIS+CACHE VIS
21	MP 89 621	MP SCREW M4x105 (x4)	VIS M4x105 MP (x4)
22	MP 89 530	MP/CMP KNOBS KIT +SCREW+CAP SCREW	KIT BOUTON MP/CMP +VIS+CACHE VIS
23	MP 89 365	MICROSWITCH+SCREW+CAP SCREW	MICRO INTERRUPTEUR +VIS+CACHE VIS
24	MP 89 364	COMMAND ARM KIT+SCREW+CAP SCREW	KIT LEVIER DE COMMANDE+VIS+CACHE VIS
25	MP 89 532	MP/CMP HANDLE SCREW (x4)	KIT VIS POIG MP/CMP (x4)
26	MP 89 573	MP600 VENTILATOR	VENTIL MP600 Ø69
27	MP 89 577	MP600 AIR DUCT	COURONNE CANAL MP600
28	MP 89 564	MP T B 120V USA MOTOR	MOTEUR MP T B 120V USA
29	MP 89 569	MP VENTILATOR PIPE	CONDUIT VENTILATEUR MP
30	MP 89 537	MPA 120V BRUSHES KIT (x2)	KIT CHARBONS MPA 120V (x2)
31	MP 89 519	MP450 120V INDUCED CIRC	INDUIT MOT MP450 120V
32	MP 89 507	MP MOTOR BEARING	ROULEMENT MOTEUR MP
33	MP 89 615	MP RECTIFIER BRIDGE	PONT DE DIODES MP
34	MP 89 596	MP 350 T HIGH FERRULE	VIROLE HTE MP350 Turbo
35	MP 89 636	ADHESIVE SECURED LABEL	KIT ETIQUETTES AVERTS



Index	Pièce / Part	Description	Désignation
1	MP 39 331	MP350A COMPLETE FOOT	PIED COMPLET MP350 A
2	MP 39 332	MP350 A FOOT	PIED MP350 A EQUIPE
3	MP 89 634	MP NSF PROTECTION	PROTECTION NSF MP
4	MP 89 619	MP FOOT SPRING	RESSORT PIED MP
5	MP 39 333	MP350 A DRIVING SHAFT	ARBRE D'ENTRAINEMENT MP350 A
6	MP 39 334	MPA FOOT BEARING RACE	BAGUE PIED MP A (roulement-joint à lèvres)
7	MP 89 624	STAINLESS STEEL DRIVING FRAME	CAGE D'ENTRAINEMENT INOX
8	MP 89 628	MP/CMP FOOT SEAL	JOINT DE PIED MP/CMP
9	MP 39 335	MP450 A BELL COVER	CLOCHE INOX MP450A EQU
10	MP 39 337	MP450 A BLADE	COUTEAU MP450 A
11	MP 89 625	MP ADRIVING HUB	MOYEU D'ENTRAINEMENT MP A
12	MP 89 536	MP/CMP VARIATOR SWITCH+SCREW+CAP SCREW	BOUTON VARIATEUR MP/CMP+VIS+CACHE VIS
13	MP 89 533	MP CMP WATERPROOFNESS KIT	KIT ETANCHEITE MP CMP+VIS+CACHE VIS
14	MP 89 534	HANDLES MP (L+R)+SCREW+ CAP SCREW	POIGNEES MP (G+D)+VIS+CACHE
15	MP 89 508	MP VENT COVERS KIT (x2)	KIT GRILLES MP (x2)
16	MP 89 462	MPC T 120V USA CIRC BOA+SCREW+CAP SCREW	PLATINE MPC T 120V USA+VIS+CACHE VIS
17	MP 89 461	MPC T 120V ELECT WIRING+SCREW+CAP SCREW	FILS ELEC MPC T 120V+VIS+CACHE VIS
18	MP 89 662	MP/CMP DISMOUNT TOOL	OUTIL DEMONTAGE MP/CMP
19	MP 89 629	MP WALL SUPPORT	SUPPORT MURAL MP
20	MP 89 541	MPC/CMP 120V POWER CORD+SCREW+CAP SCREW	CABLE ALIM MPC/CMP 120V+VIS+CACHE VIS
21	MP 89 621	MP SCREW M4x105 (x4)	VIS M4x105 MP (x4)
22	MP 89 530	MP/CMP KNOBS KIT +SCREW+CAP SCREW	KIT BOUTON MP/CMP +VIS+CACHE VIS
23	MP 89 531	MPC/CMP COMMAND ARM KIT	KIT LEVIER CDE MPC/CMP
24	MP 89 532	MP/CMP HANDLE SCREW (x4)	KIT VIS POIG MP/CMP (x4)
25	MP 89 543	MPC T MAGNET VENTIL	VENTIL AIMANT MPC TURBO
26	MP 89 577	MP600 AIR DUCT	COURONNE DE CANALISATION MP600
27	MP 89 613	MP SELF REST	SUPPORT SELF MP
28	MP 89 564	MP T B 120V USA MOTOR	MOTEUR MP T B 120V USA
29	MP 89 569	MP VENTILATOR PIPE	CONDUIT VENTILATEUR MP
30	MP 89 537	MPA 120V BRUSHES KIT (x2)	KIT CHARBONS MPA 120V (x2)
31	MP 89 519	MP450 120V INDUCED CIRC	INDUIT MOT MP450 120V
32	MP 89 507	MP MOTOR BEARING	ROULEMENT MOTEUR MP
33	MP 89 615	MP RECTIFIER BRIDGE	PONT DE DIODES MP
34	MP 89 602	MP350VV T HIGH FERRULE	VIROLE HTE MP350VV Turbo
35	MP 89 636	ADHESIVE SECURED LABEL	KIT ETIQUETTES AVERTS



Index	Pièce / Part	Description	Désignation
1	MP 39 466	MPC350 T Series B BLOCK MOTOR	BLOC MOTEUR MPC350 T Series B
2	MP 89 662	MP/CMP DISMOUNT TOOL	OUTIL DEMONTAGE MP/CMP
3	MP 89 630	MPC WALL SUPPORT	SUPPORT MURAL MPC
4	MP 89 634	NSF MIXER MP PROTECTION	PROTECTION NSF MIXER MP
5	MP 39 354	MPC350A COMPLETE FOOT	PIED COMPLET MPC350 A
6	MP 39 452	MPC350A FOOT	PIED MPC350A EQU
7	MP 39 352	MPC350 A DRIVING SHAFT	ARBRE D'ENTRAINEMENT MPC 350 A
8	MP 89 643	MPC/CMP/CMPC FOOT KIT	KIT PIED MPC/CMP/CMPC
9	MP 89 645	BEARING 608 2RS	ROULEMENT 608 2RS
10	MP 39 334	MPA FOOT BEARING RACE	BAGUE PIED MP A (roulement-joint à lèvres)
11	MP 89 624	STAINLESS STEEL DRIVING FRAME	CAGE D'ENTRAINEMENT INOX
12	MP 89 628	MP/CMP FOOT SEAL	JOINT DE PIED MP/CMP
13	MP 39 335	MP450 A BELL COVER	CLOCHE INOX MP450A EQU
14	MP 39 337	MP450 A BLADE	COUTEAU MP450 A
15	MP 89 625	MP ADRIVING HUB	MOYEU D'ENTRAINEMENT MP A
16	MP 89 541	MPC/CMP 120V POWER CORD+SCREW+CAP SCREW	CABLE ALIM MPC/CMP 120V+VIS+CACHE VIS
17	MP 89 533	MP CMP WATERPROOFNESS KIT	KIT ETANCHEITE MP CMP+VIS+CACHE VIS
18	MP 89 536	MP/CMP VARIATOR SWITCH+SCREW+CAP SCREW	BOUTON VARIATEUR MP/CMP+VIS+CACHE VIS
19	MP 89 534	HANDLES MP (L+R)+SCREW+ CAP SCREW	POIGNEES MP (G+D)+VIS+CACHE
20	MP 89 508	MP VENT COVERS KIT (x2)	KIT GRILLES MP (x2)
21	MP 89 462	MPC T 120V USA CIRC BOA	PLATINE MPC T 120V USA
22	MP 89 650	MP WHIP BOX	BOITE FOUET MP
23	MP 89 553	MP WHIPS KIT (x2)	FOUETS MP (x2)
24	MP 89 544	PIGNONS RLT BAG BF MP+SCREW+CAP SCREW	PIGNONS RLT BAG BF MP+VIS+CACHE-VIS B.F.
25	MP 89 379	MP/CMP BF UPPER BODY	COQUE SUP BF MP/CMP
26	MP 89 385	PLATE+SCREW+CAP SCREW	FLASQUE+VIS+CACHE-VIS
27	MP 89 387	MP BF ALU LOWER BODY	COQUE INF ALU BF MP
28	MP 89 545	BF SEAL WASHER KIT+SCREW+CAP SCREW KIT	KIT JOINT RONDELLE BF+VIS+CACHE VIS
29	MP 89 389	BF SCREW+CAP SCREW	VIS+CACHE VIS BF MP/CMP
30	MP 89 552	MP/CMP WHIP EJECTOR	KIT EJECT FOUET MP/CMP
31	MP 89 530	MP/CMP KNOBS KIT+SCREW+CAP SCREW	KIT BOUTON MP/CMP+VIS+CACHE VIS
32	MP 89 531	MP/CMP COMMAND ARM KIT +SCREW+CAP SCREW	KIT LEVIER COMMANDE MP/CMP+VIS+CACHE VIS
33	MP 89 621	MP SCREW M4x105 (x4)	VIS M4x105 MP (x4)
34	MP 89 532	MP/CMP HANDLE SCREW KIT (x4)	KIT VIS POIG MP/CMP (x4)
35	MP 89 461	MPC T 120V ELECT WIRING	FILS ELEC MPC T 120V
36	MP 89 543	MPC T MAGNET VENTIL	VENTIL AIMANT MPC TURBO
37	MP 89 577	MP600 AIR DUCT	COURONNE CANALISATION MP600
38	MP 89 613	MP SELF REST	SUPPORT SELF MP
39	MP 89 564	MP T B 120V USA MOTOR	MOTEUR MP T B 120V USA
40	MP 89 569	MP VENTILATOR PIPE	CONDUIT VENTILATEUR MP
41	MP 89 469	MP 120V BRUSHES KIT (x2)	KIT CHARBONS MP 120V (x2)
42	MP 89 519	MP450 120V INDUCED CIRC	INDUIT MOT MP450 120V
43	MP 89 507	MP MOTOR BEARING	ROULEMENT MOTEUR MP
44	MP 89 615	MP RECTIFIER BRIDGE	PONT DE DIODES MP
45	MP 89 600	MPC350 T HIGH FERRULE	VIROLE HTE MPC350 Turbo
46	MP 89 636	ADHESIVE SECURED LABEL	KIT ETIQUETTES AVERTS
47	MP 89 633	MPC ALUMINIUM CASING	CARTER ALU MPC
48	MP 89 632	MPC DRIVING HUB	MOYEU D'ENTRAINEMENT MPC

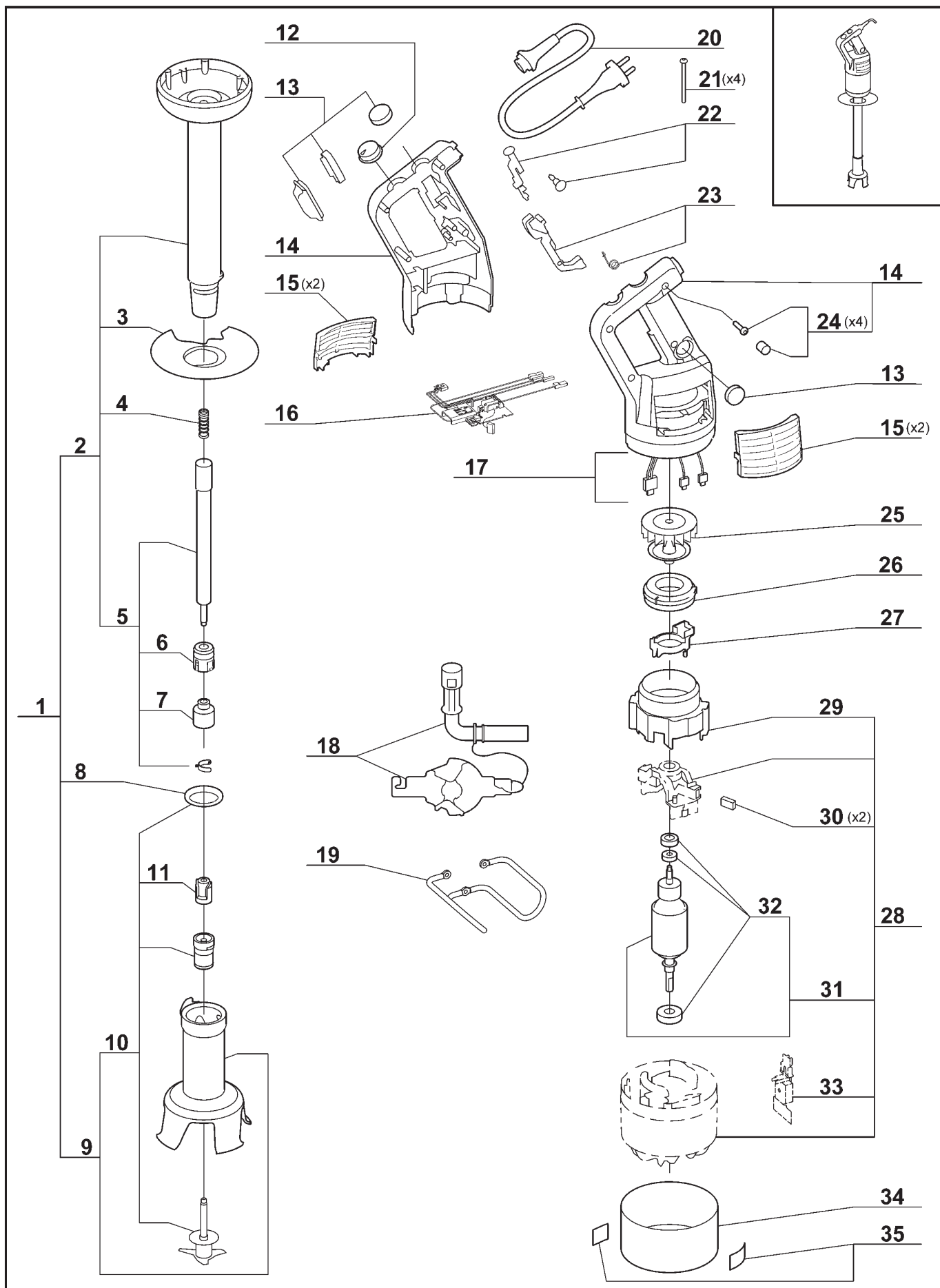


Index	Pièce / Part	Description	Désignation
1	MP 39 338	MP450A COMPLETE FOOT	PIED COMPLET MP450 A
2	MP 89 634	MP NSF PROTECTION	PROTECTION NSF MP
3	MP 39 339	MP450 A FOOT	PIED MP450 A EQUIPE
4	MP 89 619	MP FOOT SPRING	RESSORT PIED MP
5	MP 39 340	MP450 A DRIVING SHAFT	ARBRE D'ENTRAINEMENT MP450 A
6	MP 39 334	MPA FOOT BEARING RACE	BAGUE PIED MP A (roulement-joint à lèvres)
7	MP 89 624	STAINLESS STEEL DRIVING FRAME	CAGE D'ENTRAINEMENT INOX
8	MP 89 628	MP/CMP FOOT SEAL	JOINT DE PIED MP/CMP
9	MP 39 335	MP450 A BELL COVER	CLOCHE INOX MP450A EQU
10	MP 39 337	MP450 A BLADE	COUTEAU MP450 A
11	MP 89 625	MP ADRIVING HUB	MOYEU D'ENTRAINEMENT MP A
12	MP 89 360	CAP HANDLE KIT +SCREW+CAP SCREW	KIT BOUCHON POIGNEE +VIS+CACHE VIS
13	MP 89 533	MP CMP WATERPROOFNESS KIT	KIT ETANCHEITE MP CMP+VIS+CACHE VIS
14	MP 89 534	HANDLES MP (L+R)+SCREW+ CAP SCREW	POIGNEES MP (G+D)+VIS+CACHE
15	MP 89 508	MP VENT COVERS KIT (x2)	KIT GRILLES MP (x2)
16	MP 89 662	MP/CMP DISMOUNT TOOL	OUTIL DEMONTAGE MP/CMP
17	MP 89 629	MP WALL SUPPORT	SUPPORT MURAL MP
18	MP 89 464	MP T 120V USA CIRC BOARD+SCREW+CAP SCREW	PLATINE MP T 120V USA+VIS+CACHE VIS
19	MP 89 459	MP T 120V ELECT WIRING+SCREW+CAP SCREW	FILS ELEC MP T 120V+VIS+CACHE VIS
20	MP 89 397	MP 120V POWER CORD+SCREW+CAP SCREW	CABLE ALIM MP 120V+VIS+CACHE VIS
21	MP 89 621	MP SCREW M4x105 (x4)	VIS M4x105 MP (x4)
22	MP 89 530	MP/CMP KNOBS KIT +SCREW+CAP SCREW	KIT BOUTON MP/CMP +VIS+CACHE VIS
23	MP 89 365	MICROSWITCH+SCREW+CAP SCREW	MICRO INTERRUPTEUR +VIS+CACHE VIS
24	MP 89 364	COMMAND ARM KIT+SCREW+CAP SCREW	KIT LEVIER DE COMMANDE+VIS+CACHE VIS
25	MP 89 532	MP/CMP HANDLE SCREW (x4)	KIT VIS POIG MP/CMP (x4)
26	MP 89 573	MP600 VENTILATOR	VENTIL MP600 Ø69
27	MP 89 577	MP600 AIR DUCT	COURONNE CANAL MP600
28	MP 89 564	MP T B 120V USA MOTOR	MOTEUR MP T B 120V USA
29	MP 89 569	MP VENTILATOR PIPE	CONDUIT VENTILATEUR MP
30	MP 89 537	MPA 120V BRUSHES KIT (x2)	KIT CHARBONS MPA 120V (x2)
31	MP 89 519	MP450 120V INDUCED CIRC	INDUIT MOT MP450 120V
32	MP 89 507	MP MOTOR BEARING	ROULEMENT MOTEUR MP
33	MP 89 615	MP RECTIFIER BRIDGE	PONT DE DIODES MP
34	MP 89 597	MP 450 T HIGH FERRULE	VIROLE HTE MP450 Turbo
35	MP 89 636	ADHESIVE SECURED LABEL	KIT ETIQUETTES AVERTS

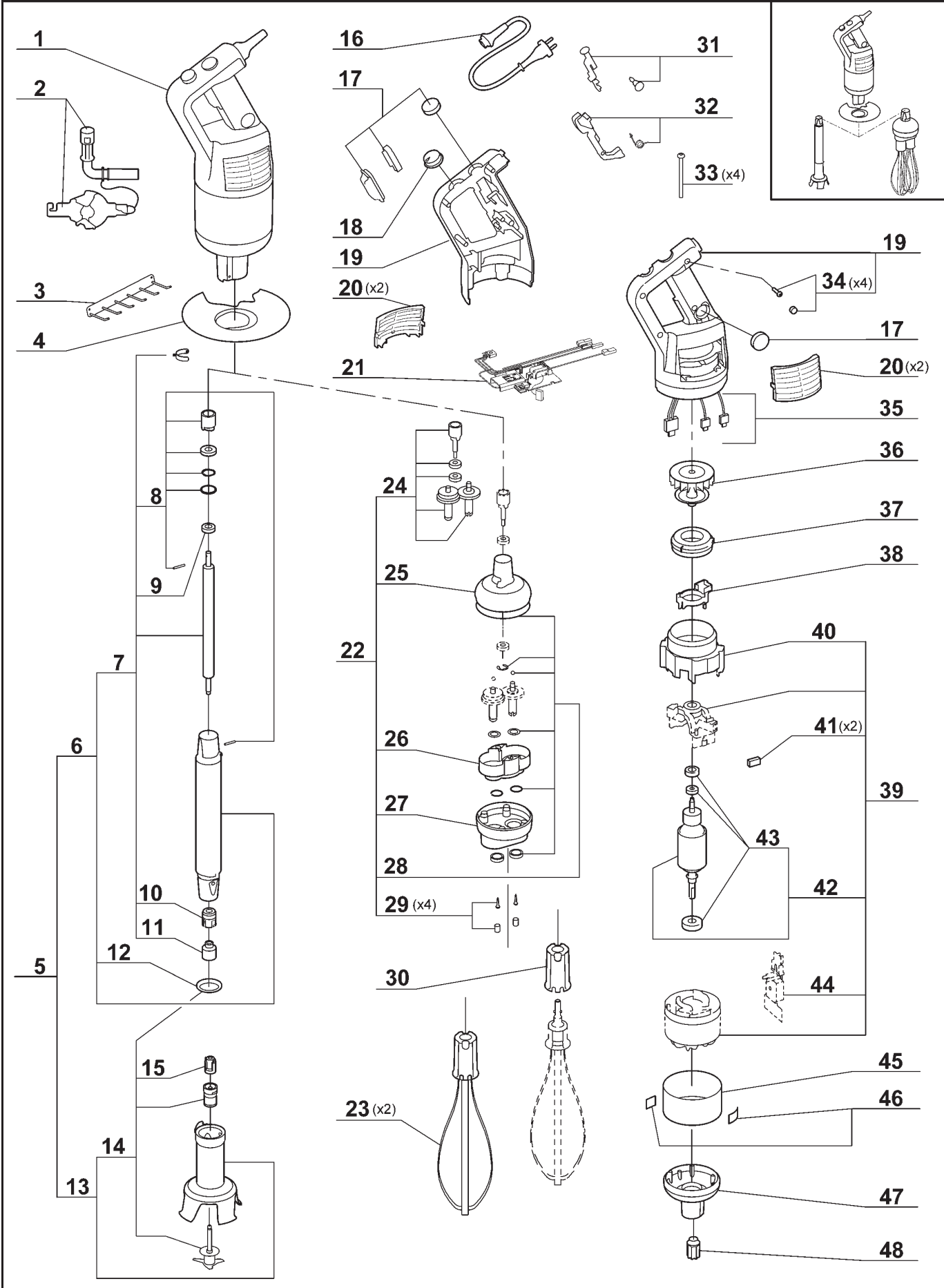
robotcoupe® U.S.A., Inc.

**MP 450 Turbo V.V.
Series B**

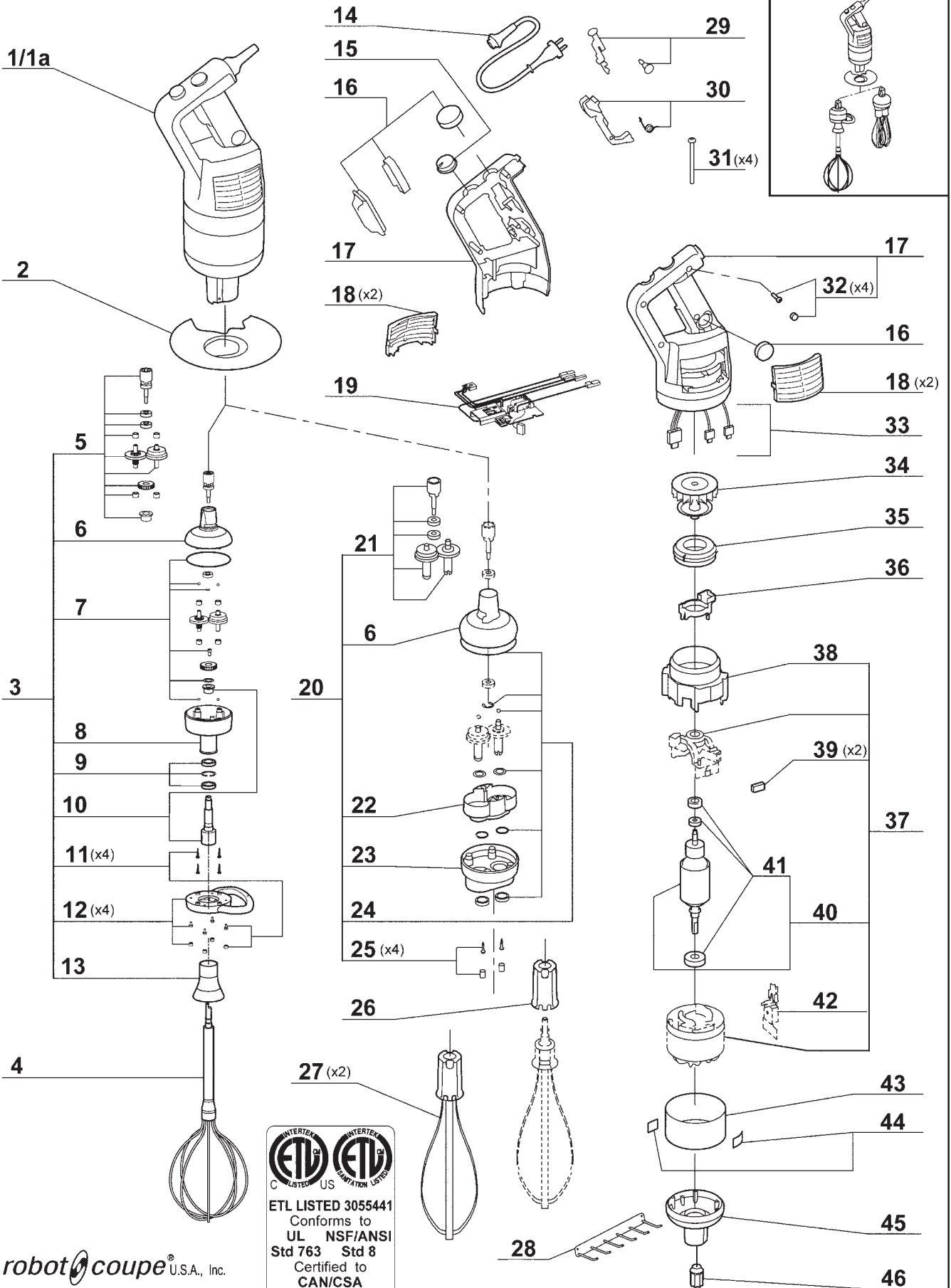
34 553
Serial number / N° de série
- 433 - - - - -



Index	Pièce / Part	Description	Désignation
1	MP 39 338	MP450A COMPLETE FOOT	PIED COMPLET MP450 A
2	MP 39 339	MP450 A FOOT	PIED MP450 A EQUIPE
3	MP 89 634	MP NSF PROTECTION	PROTECTION NSF MP
4	MP 89 619	MP FOOT SPRING	RESSORT PIED MP
5	MP 39 340	MP450 A DRIVING SHAFT	ARBRE D'ENTRAINEMENT MP450 A
6	MP 39 334	MPA FOOT BEARING RACE	BAGUE PIED MP A (roulement-joint à lèvres)
7	MP 89 624	STAINLESS STEEL DRIVING FRAME	CAGE D'ENTRAINEMENT INOX
8	MP 89 628	MP/CMP FOOT SEAL	JOINT DE PIED MP/CMP
9	MP 39 335	MP450 A BELL COVER	CLOCHE INOX MP450A EQU
10	MP 39 337	MP450 A BLADE	COUTEAU MP450 A
11	MP 89 625	MP ADRIVING HUB	MOYEU D'ENTRAINEMENT MP A
12	MP 89 536	MP/CMP VARIATOR SWITCH+SCREW+CAP SCREW	BOUTON VARIATEUR MP/CMP+VIS+CACHE VIS
13	MP 89 533	MP CMP WATERPROOFNESS KIT	KIT ETANCHEITE MP CMP+VIS+CACHE VIS
14	MP 89 534	HANDLES MP (L+R)+SCREW+ CAP SCREW	POIGNEES MP (G+D)+VIS+CACHE
15	MP 89 508	MP VENT COVERS KIT (x2)	KIT GRILLES MP (x2)
16	MP 89 462	MPC T 120V USA CIRC BOA+SCREW+CAP SCREW	PLATINE MPC T 120V USA+VIS+CACHE VIS
17	MP 89 461	MPC T 120V ELECT WIRING+SCREW+CAP SCREW	FILS ELEC MPC T 120V+VIS+CACHE VIS
18	MP 89 662	MP/CMP DISMOUNT TOOL	OUTIL DEMONTAGE MP/CMP
19	MP 89 629	MP WALL SUPPORT	SUPPORT MURAL MP
20	MP 89 541	MPC/CMP 120V POWER CORD+SCREW+CAP SCREW	CABLE ALIM MPC/CMP 120V+VIS+CACHE VIS
21	MP 89 621	MP SCREW M4x105 (x4)	VIS M4x105 MP (x4)
22	MP 89 530	MP/CMP KNOBS KIT +SCREW+CAP SCREW	KIT BOUTON MP/CMP +VIS+CACHE VIS
23	MP 89 531	MPC/CMP COMMAND ARM KIT	KIT LEVIER CDE MPC/CMP
24	MP 89 532	MP/CMP HANDLE SCREW (x4)	KIT VIS POIG MP/CMP (x4)
25	MP 89 543	MPC T MAGNET VENTIL	VENTIL AIMANT MPC TURBO
26	MP 89 577	MP600 AIR DUCT	COURONNE DE CANALISATION MP600
27	MP 89 613	MP SELF REST	SUPPORT SELF MP
28	MP 89 564	MP T B 120V USA MOTOR	MOTEUR MP T B 120V USA
29	MP 89 569	MP VENTILATOR PIPE	CONDUIT VENTILATEUR MP
30	MP 89 537	MPA 120V BRUSHES KIT (x2)	KIT CHARBONS MPA 120V (x2)
31	MP 89 519	MP450 120V INDUCED CIRC	INDUIT MOT MP450 120V
32	MP 89 507	MP MOTOR BEARING	ROULEMENT MOTEUR MP
33	MP 89 615	MP RECTIFIER BRIDGE	PONT DE DIODES MP
34	MP 89 603	MP450VV T HIGH FERRULE	VIROLE HTE MP450VV Turbo
35	MP 89 636	ADHESIVE SECURED LABEL	KIT ETIQUETTES AVERTS



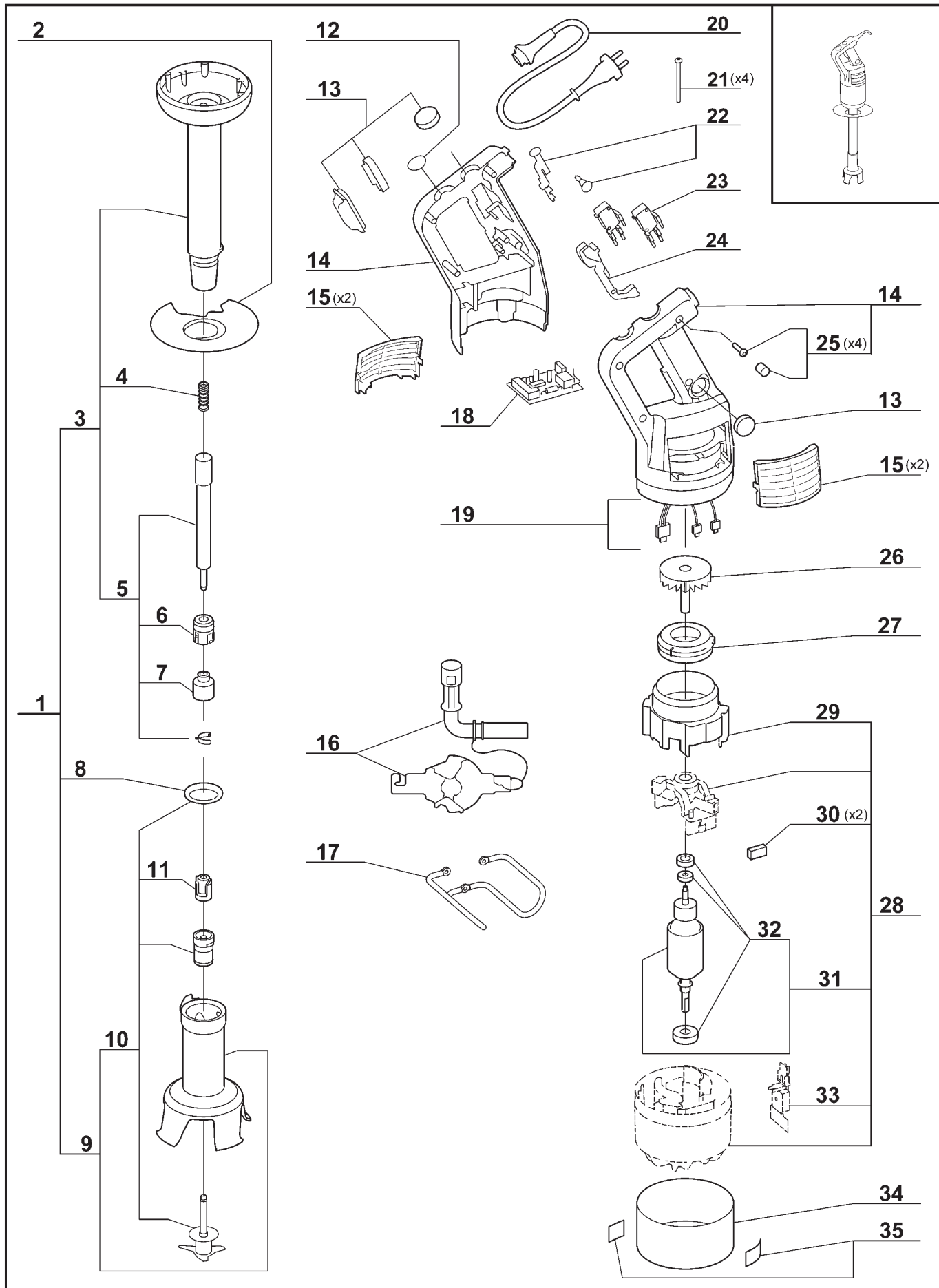
Index	Pièce / Part	Description	Désignation
1	MP 39 467	MPC450 T Series B BLOCK MOTOR	BLOC MOTEUR MPC450 T Series B
2	MP 89 662	MP/CMP DISMOUNT TOOL	OUTIL DEMONTAGE MP/CMP
3	MP 89 630	MPC WALL SUPPORT	SUPPORT MURAL MPC
4	MP 89 634	NSF MIXER MP PROTECTION	PROTECTION NSF MIXER MP
5	MP 39 355	MPC450A COMPLETE FOOT	PIED COMPLET MPC450 A
6	MP 39 453	MPC450A FOOT	PIED MPC450A EQU
7	MP 39 350	MPC450 A DRIVING SHAFT	ARBRE D'ENTRAINEMENT MPC 450 A
8	MP 89 643	MPC/CMP/CMPC FOOT KIT	KIT PIED MPC/CMP/CMPC
9	MP 89 645	BEARING 608 2RS	ROULEMENT 608 2RS
10	MP 39 334	MPA FOOT BEARING RACE	BAGUE PIED MP A (roulement-joint à lèvres)
11	MP 89 624	STAINLESS STEEL DRIVING FRAME	CAGE D'ENTRAINEMENT INOX
12	MP 89 628	MP/CMP FOOT SEAL	JOINT DE PIED MP/CMP
13	MP 39 335	MP450 A BELL COVER	CLOCHE INOX MP450A EQU
14	MP 39 337	MP450 A BLADE	COUTEAU MP450 A
15	MP 89 625	MP ADRIVING HUB	MOYEU D'ENTRAINEMENT MP A
16	MP 89 541	MPC/CMP 120V POWER CORD+SCREW+CAP SCREW	CABLE ALIM MPC/CMP 120V+VIS+CACHE VIS
17	MP 89 533	MP CMP WATERPROOFNESS KIT	KIT ETANCHEITE MP CMP+VIS+CACHE VIS
18	MP 89 536	MP/CMP VARIATOR SWITCH+SCREW+CAP SCREW	BOUTON VARIATEUR MP/CMP+VIS+CACHE VIS
19	MP 89 534	HANDLES MP (L+R)+SCREW+ CAP SCREW	POIGNEES MP (G+D)+VIS+CACHE
20	MP 89 508	MP VENT COVERS KIT (x2)	KIT GRILLES MP (x2)
21	MP 89 462	MPC T 120V USA CIRC BOA	PLATINE MPC T 120V USA
22	MP 89 650	MP WHIP BOX	BOITE FOUET MP
23	MP 89 553	MP WHIPS KIT (x2)	FOUETS MP (x2)
24	MP 89 544	PIGNONS RLT BAG BF MP+SCREW+CAP SCREW	PIGNONS RLT BAG BF MP+VIS+CACHE-VIS B.F.
25	MP 89 379	MP/CMP BF UPPER BODY	COQUE SUP BF MP/CMP
26	MP 89 385	PLATE+SCREW+CAP SCREW	FLASQUE+VIS+CACHE-VIS
27	MP 89 387	MP BF ALU LOWER BODY	COQUE INF ALU BF MP
28	MP 89 545	BF SEAL WASHER KIT+SCREW+CAP SCREW KIT	KIT JOINT RONDELLE BF+VIS+CACHE VIS
29	MP 89 389	BF SCREW+CAP SCREW	VIS+CACHE VIS BF MP/CMP
30	MP 89 552	MP/CMP WHIP EJECTOR	KIT EJECT FOUET MP/CMP
31	MP 89 530	MP/CMP KNOBS KIT+SCREW+CAP SCREW	KIT BOUTON MP/CMP+VIS+CACHE VIS
32	MP 89 531	MP/CMP COMMAND ARM KIT +SCREW+CAP SCREW	KIT LEVIER COMMANDE MP/CMP+VIS+CACHE VIS
33	MP 89 621	MP SCREW M4x105 (x4)	VIS M4x105 MP (x4)
34	MP 89 532	MP/CMP HANDLE SCREW KIT (x4)	KIT VIS POIG MP/CMP (x4)
35	MP 89 461	MPC T 120V ELECT WIRING	FILS ELEC MPC T 120V
36	MP 89 543	MPC T MAGNET VENTIL	VENTIL AIMANT MPC TURBO
37	MP 89 577	MP600 AIR DUCT	COURONNE CANALISATION MP600
38	MP 89 613	MP SELF REST	SUPPORT SELF MP
39	MP 89 564	MP T B 120V USA MOTOR	MOTEUR MP T B 120V USA
40	MP 89 569	MP VENTILATOR PIPE	CONDUIT VENTILATEUR MP
41	MP 89 469	MP 120V BRUSHES KIT (x2)	KIT CHARBONS MP 120V (x2)
42	MP 89 519	MP450 120V INDUCED CIRC	INDUIT MOT MP450 120V
43	MP 89 507	MP MOTOR BEARING	ROULEMENT MOTEUR MP
44	MP 89 615	MP RECTIFIER BRIDGE	PONT DE DIODES MP
45	MP 89 601	MPC450 T HIGH FERRULE	VIROLE HTE MPC450 Turbo
46	MP 89 636	ADHESIVE SECURED LABEL	KIT ETIQUETTES AVERTS
47	MP 89 633	MPC ALUMINIUM CASING	CARTER ALU MPC
48	MP 89 632	MPC DRIVING HUB	MOYEU D'ENTRAINEMENT MPC



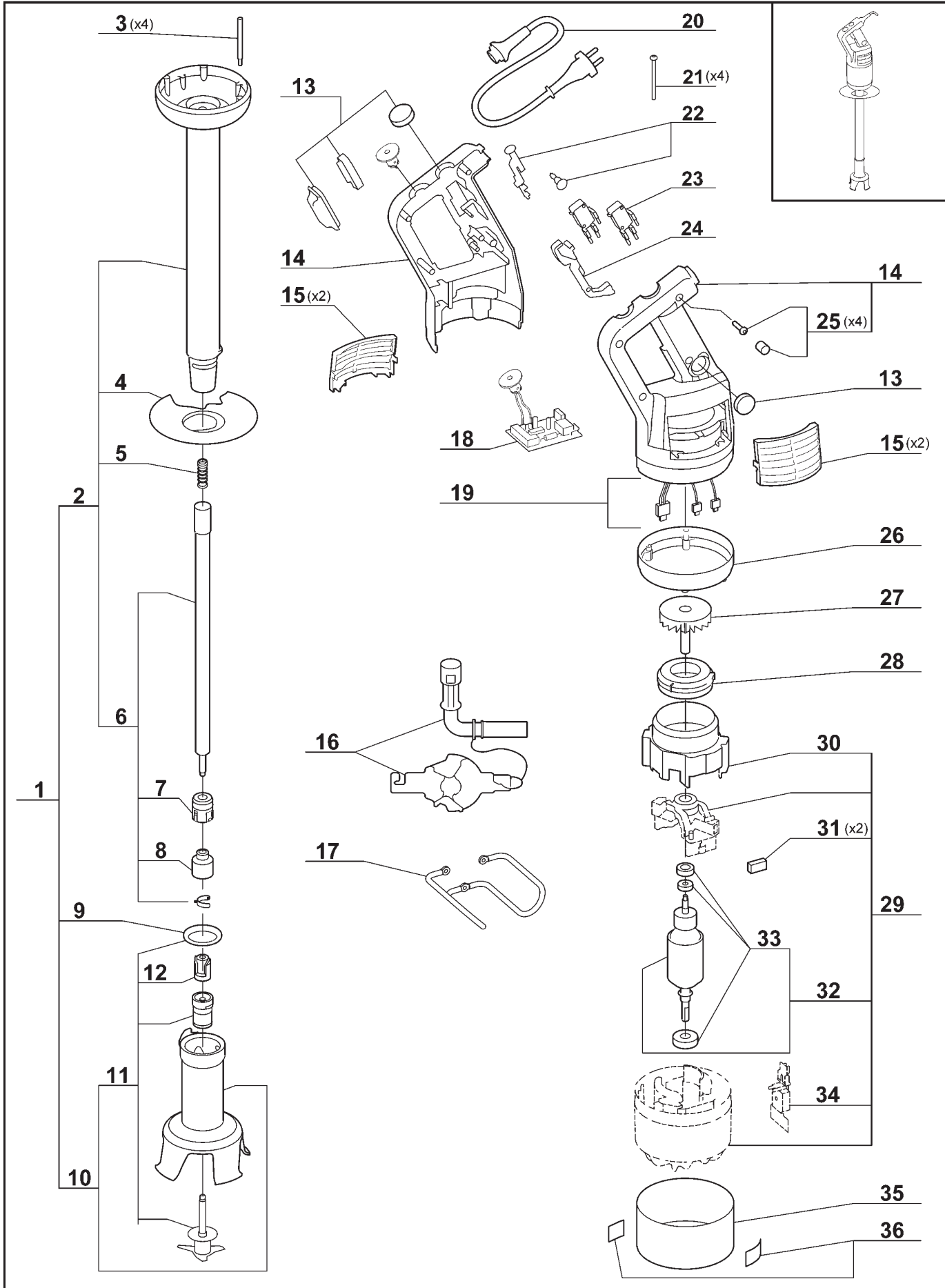


ETL LISTED 3055441
 Conforms to
UL NSF/ANSI
Std 763 Std 8
 Certified to
CAN/CSA
Std C22.2 No.195

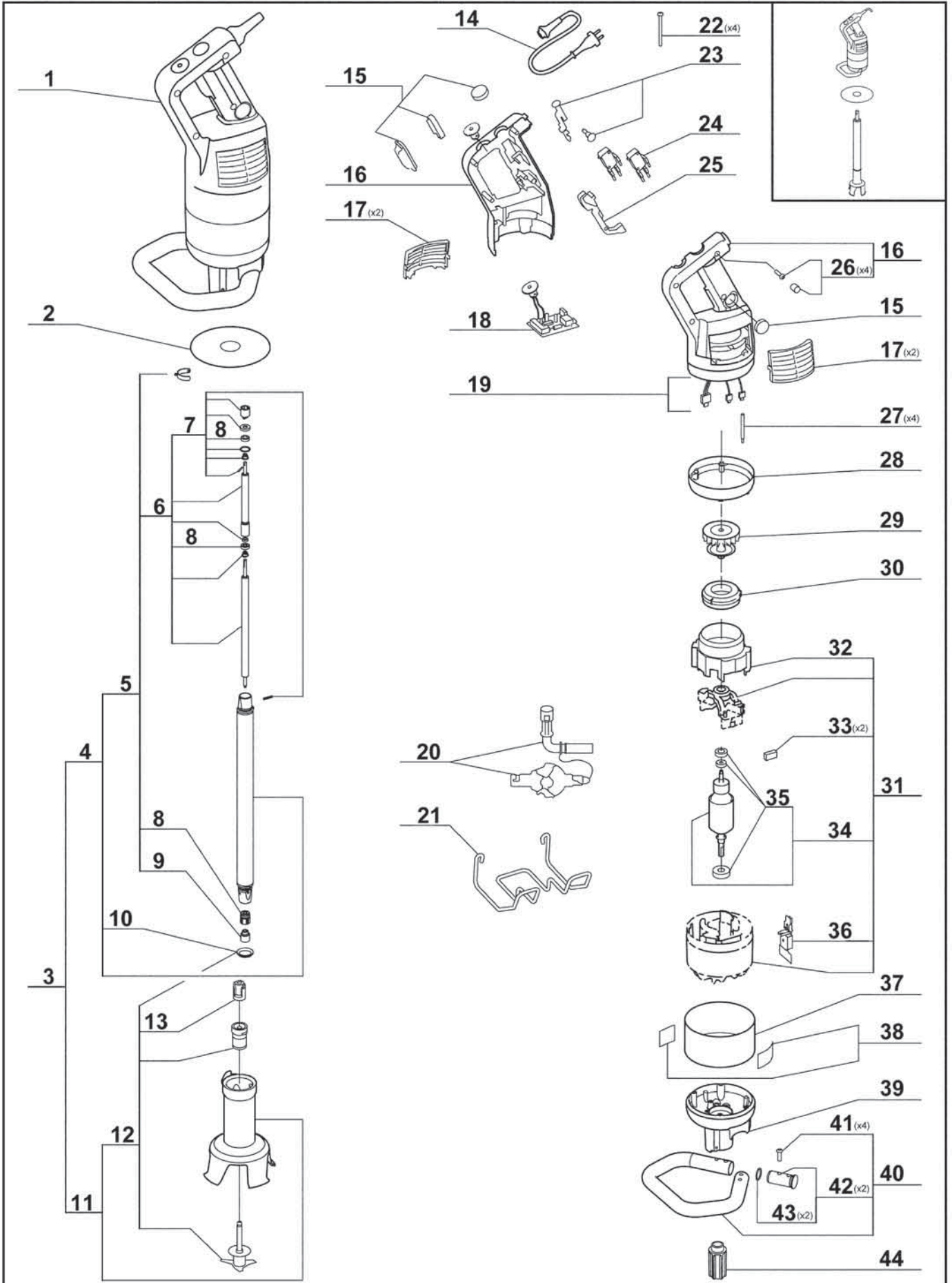
<i>Index</i>	<i>Pièce / Part</i>	<i>Description</i>	<i>Désignation</i>
1	39 465	MP450 T FW Series B BLOCK MOTOR	BLOC MOTEUR MP450 T FW Series B
1a	89 125	MP450 T FWXL Series B BLOCK MOTOR	BLOC MOTEUR MP450 T FWXL Series B
2	89 634	MP NSF PROTECTION	PROTECTION NSF MP
3	89 092	MIXER BOX	BOITE MELANGEUR
4	89 094	WHIPS	FOUET 600
5	89 090	PIGNONS + BAG + BEARING KIT	Kit PIGNONS + BAGUE + ROULEMENT
6	89 379	MP/CMP BF UPPER BODY	COQUE SUP BF MP/CMP
7	89 091	SEAL + WASHER KIT	Kit JOINT + RONDELLE
8	89 088	LOWER BODY	COQUE INF ALU
9	89 077	BEARING + CIRCLIPS + BAG + SEAL	Kit ROULEMENT + CIRCLIPS + BAGUE + JOINT A LEVRE
10	89 076	DRIVING SHAFT	AXE SORTIE
11	89 089	SCREW + CAP SCREW KIT	Kit VIS + CACHE VIS
12	89 093	HANDLES KIT	Kit POIGNEE
13	89 078	PROTECTION	PROTECTION
14	89 541	MPC/CMP 120V POWER CORD+SCREW+CAP SCREW	CABLE ALIM MPC/CMP 120V+VIS+CACHE VIS
15	89 536	MP/CMP VARIATOR SWITCH+SCREW+CAP SCREW	BOUTON VARIATEUR MP/CMP+VIS+CACHE VIS
16	89 533	MP CMP WATERPROOFNESS KIT	KIT ETANCHEITE MP CMP+VIS+CACHE VIS
17	89 534	HANDLES MP (L+R)+SCREW+ CAP SCREW	POIGNEES MP (G+D)+VIS+CACHE
18	89 508	MP VENT COVERS KIT (x2)	KIT GRILLES MP (x2)
19	89 462	MPC T 120V USA CIRC BOA	PLATINE MPC T 120V USA
20	89 650	MP WHIP BOX	BOITE FOUET MP
21	89 544	PIGNONS RLT BAG BF MP+SCREW+CAP SCREW	PIGNONS RLT BAG BF MP+VIS+CACHE-VIS B.F.
22	89 385	PLATE+SCREW+CAP SCREW	FLASQUE+VIS+CACHE-VIS
23	89 387	MP BF ALU LOWER BODY	COQUE INF ALU BF MP
24	89 545	BF SEAL WASHER KIT+SCREW+CAP SCREW KIT	KIT JOINT RONDELLE BF+VIS+CACHE VIS
25	89 389	BF SCREW+CAP SCREW	VIS+CACHE VIS BF MP/CMP
26	89 552	MP/CMP WHIP EJECTOR	KIT EJECT FOUET MP/CMP
27	89 553	MP WHIPS KIT (x2)	FOUETS MP (x2)
28	89 630	MPC WALL SUPPORT	SUPPORT MURAL MPC
29	89 530	MP/MPC KNOBS KIT+SCREW+CAP SCREW	KIT BOUTON MP/MPC+VIS+CACHE VIS
30	89 531	MP/CMP COMMAND ARM KIT+SCREW+CAP SCREW	KIT LEVIER COMMANDE MP/CMP+VIS+CACHE VIS
31	89 621	MP SCREW M4x105 (x4)	VIS M4x105 MP (x4)
32	89 532	MP/CMP HANDLE SCREW KIT (x4)	KIT VIS POIG MP/CMP (x4)
33	89 461	MPC T 120V ELECT WIRING	FILS ELEC MPC T 120V
34	89 543	MPC T MAGNET VENTIL	VENTIL AIMANT MPC TURBO
35	89 577	MP600 AIR DUCT	COURONNE CANALISATION MP600
36	89 613	MP SELF REST	SUPPORT SELF MP
37	89 564	MP T B 120V USA MOTOR	MOTEUR MP T B 120V USA
38	89 569	MP VENTILATOR PIPE	CONDUIT VENTILATEUR MP
39	89 469	MP 120V BRUSHES KIT (x2)	KIT CHARBONS MP 120V (x2)
40	89 519	MP450 120V INDUCED CIRC	INDUIT MOT MP450 120V
41	89 507	MP MOTOR BEARING	ROULEMENT MOTEUR MP
42	89 615	MP RECTIFIER BRIDGE	PONT DE DIODES MP
43	89 604	MP450FW T HIGH FERRULE	VIROLE HTE MP450FW Turbo
44	89 636	ADHESIVE SECURED LABEL	KIT ETIQUETTES AVERTS
45	89 633	MPC ALUMINIUM CASING	CARTER ALU MPC
46	89 632	MPC T MAGNET VENTIL	VENTIL AIMANT MPC TURBO



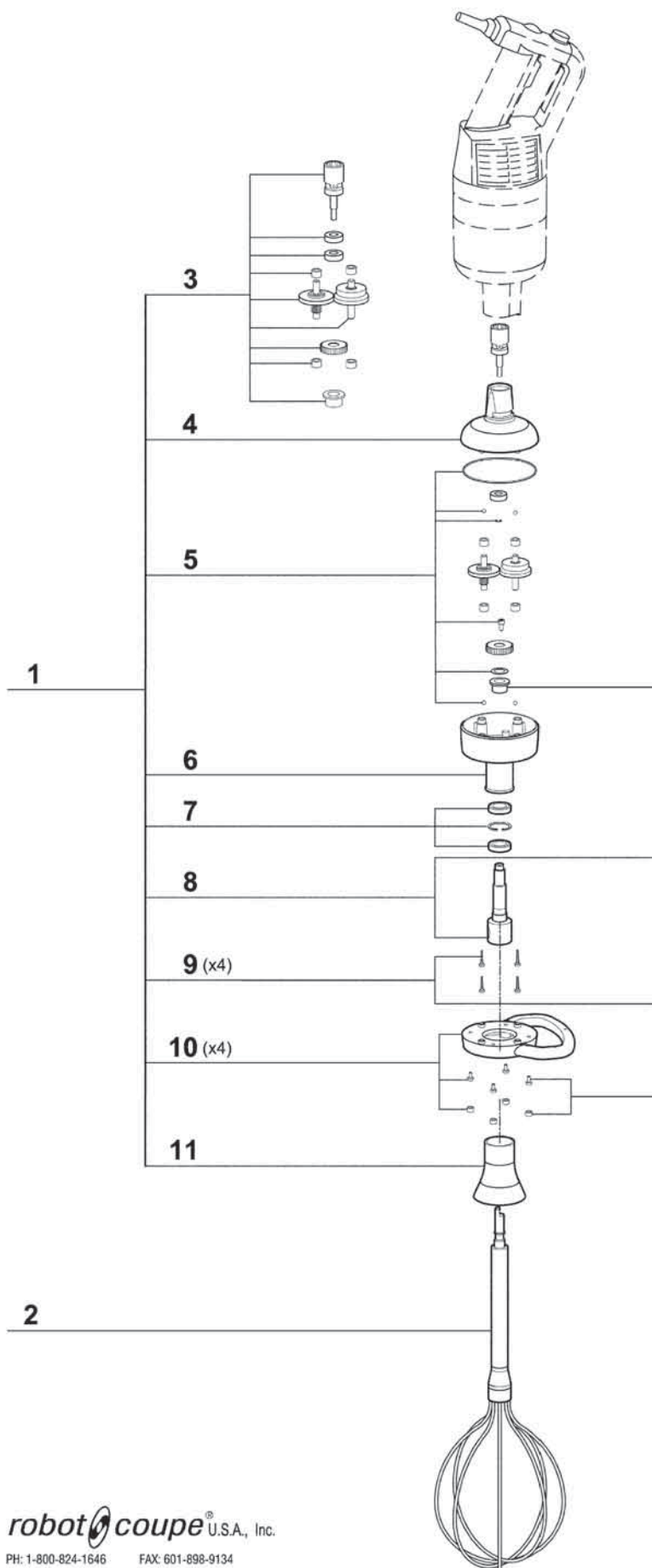
Index	Pièce / Part	Description	Désignation
1	MP 39 518	550 T V2 USA COMPLETE FOOT	PIED CPLT MP550T V2 USA
2	MP 89 634	MP NSF PROTECTION	PROTECTION NSF MP
3	MP 39 342	MP550A FOOT	PIED MP550A EQU
4	MP 89 619	MP FOOT SPRING	RESSORT PIED MP
5	MP 39 343	MP550A DRIVING SHAFT	ARBRE ENTRAIN MP550A
6	MP 39 334	MPA FOOT BEARING RACE	BAGUE PIED MP A (roulement-joint à lèvres)
7	MP 89 624	STAINLESS STEEL DRIVING FRAME	CAGE D'ENTRAINEMENT INOX
8	MP 89 628	MP/CMP FOOT SEAL	JOINT DE PIED MP/CMP
9	MP 39 455	MP550 TURBO B BELL COVER	CLOCHE INOX MP550 T USA
10	MP 39 456	MP550 TURBO B BLADE D65 US	COUTEAU MP550 T SERI B USA
11	MP 89 625	MP ADRIVING HUB	MOYEU D'ENTRAINEMENT MP A
12	MP 89 360	CAP HANDLE KIT +SCREW+CAP SCREW	KIT BOUCHON POIGNEE +VIS+CACHE VIS
13	MP 89 533	MP CMP WATERPROOFNESS KIT	KIT ETANCHEITE MP CMP+VIS+CACHE VIS
14	MP 89 534	HANDLES MP (L+R)+SCREW+ CAP SCREW	POIGNEES MP (G+D)+VIS+CACHE
15	MP 89 508	MP VENT COVERS KIT (x2)	KIT GRILLES MP (x2)
16	MP 89 662	MP/CMP DISMOUNT TOOL	OUTIL DEMONTAGE MP/CMP
17	MP 89 629	MP WALL SUPPORT	SUPPORT MURAL MP
18	MP 89 463	550T 120V USA CIRC BOARD+SCREW+CAP SCREW	PLATINE MP550T 120V USA+VIS+CACHE VIS
19	MP 89 459	MP T 120V ELECT WIRING+SCREW+CAP SCREW	FILS ELEC MP T 120V+VIS+CACHE VIS
20	MP 89 397	MP 120V POWER CORD+SCREW+CAP SCREW	CABLE ALIM MP 120V+VIS+CACHE VIS
21	MP 89 621	MP SCREW M4x105 (x4)	VIS M4x105 MP (x4)
22	MP 89 530	MP/CMP KNOBS KIT +SCREW+CAP SCREW	KIT BOUTON MP/CMP +VIS+CACHE VIS
23	MP 89 365	MICROSWITCH+SCREW+CAP SCREW	MICRO INTERRUPTEUR +VIS+CACHE VIS
24	MP 89 364	COMMAND ARM KIT+SCREW+CAP SCREW	KIT LEVIER DE COMMANDE+VIS+CACHE VIS
25	MP 89 532	MP/CMP HANDLE SCREW (x4)	KIT VIS POIG MP/CMP (x4)
26	MP 89 573	MP600 VENTILATOR	VENTIL MP600 Ø69
27	MP 89 577	MP600 AIR DUCT	COURONNE CANALISATION MP600
28	MP 89 565	550T B 120V USA MOTOR	MOTEUR 550T B 120V USA
29	MP 89 569	MP VENTILATOR PIPE	CONDUIT VENTILATEUR MP
30	MP 89 537	MPA 120V BRUSHES KIT (x2)	KIT CHARBONS MPA 120V (x2)
31	MP 89 511	MP550 120V INDUCED CIRC	INDUIT MOT MP550 120V
32	MP 89 507	MP MOTOR BEARING	ROULEMENT MOTEUR MP
33	MP 89 615	MP RECTIFIER BRIDGE	PONT DE DIODES MP
34	MP 89 598	MP 550 T HIGH FERRULE	VIROLE HTE MP550 Turbo
35	MP 89 636	ADHESIVE SECURED LABEL	KIT ETIQUETTES AVERTS



Index	Pièce / Part	Description	Désignation
1	MP 39 346	MP600A COMPLETE FOOT	PIED COMPLET MP600A
2	MP 39 348	MP600A FOOT	PIED MP600A EQU
3	MP 89 631	MP600 SCREWED SPACER	TIRANT MP600
4	MP 89 634	MP NSF PROTECTION	PROTECTION NSF MP
5	MP 89 619	MP FOOT SPRING	RESSORT PIED MP
6	MP 39 349	MP600A DRIVING SHAFT	ARBRE ENTRAIN MP600A
7	MP 39 334	MPA FOOT BEARING RACE	BAGUE PIED MP A (roulement-joint à lèvres)
8	MP 89 624	STAINLESS STEEL DRIVING FRAME	CAGE D'ENTRAINEMENT INOX
9	MP 89 628	MP/CMP FOOT SEAL	JOINT DE PIED MP/CMP
10	MP 39 344	STAINL ST BEAR 608 2RS	ROULEMENT INOX 608 2RS
11	MP 39 345	MP550 A BLADE	COUTEAU MP550 A
12	MP 89 625	MP ADRIVING HUB	MOYEU D'ENTRAINEMENT MP A
13	MP 89 533	MP CMP WATERPROOFNESS KIT	KIT ETANCHEITE MP CMP+VIS+CACHE VIS
14	MP 89 534	HANDLES MP (L+R)+SCREW+ CAP SCREW	POIGNEES MP (G+D)+VIS+CACHE
15	MP 89 508	MP VENT COVERS KIT (x2)	KIT GRILLES MP (x2)
16	MP 89 662	MP/CMP DISMOUNT TOOL	OUTIL DEMONTAGE MP/CMP
17	MP 89 629	MP WALL SUPPORT	SUPPORT MURAL MP
18	MP 89 429	MP600 120V CIRC BOARD	PLATINE MP600 120V
19	MP 89 427	MP600 T 120V ELECT WIRING	FILS ELEC MP600 T 120V
20	MP 89 397	MP 120V POWER CORD+SCREW+CAP SCREW	CABLE ALIM MP 120V+VIS+CACHE VIS
21	MP 89 622	MP600 SCREW M4x60	VIS M4x60 MP600
22	MP 89 530	MP/CMP KNOBS KIT +SCREW+CAP SCREW	KIT BOUTON MP/CMP +VIS+CACHE VIS
23	MP 89 365	MICROSWITCH+SCREW+CAP SCREW	MICRO INTERRUPTEUR +VIS+CACHE VIS
24	MP 89 364	COMMAND ARM KIT+SCREW+CAP SCREW	KIT LEVIER DE COMMANDE+VIS+CACHE VIS
25	MP 89 532	MP/CMP HANDLE SCREW (x4)	KIT VIS POIG MP/CMP (x4)
26	MP 89 620	MP600 MOTEUR FERRULE	VIROLE MOTEUR MP600
27	MP 89 573	MP600 VENTILATOR	VENTIL MP600 Ø69
28	MP 89 577	MP600 AIR DUCT	COURONNE CANALISATION MP600
29	MP 89 566	600T B 120V USA MOTOR	MOTEUR 600T B 120V USA
30	MP 89 569	MP VENTILATOR PIPE	CONDUIT VENTILATEUR MP
31	MP 89 469	MP 120V BRUSHES KIT (x2)	KIT CHARBONS MP 120V (x2)
32	MP 89 977	MP600 120V INDUCED CIRC	INDUIT MOT MP600 120V
33	MP 89 507	MP MOTOR BEARING	ROULEMENT MOTEUR MP
34	MP 89 615	MP RECTIFIER BRIDGE	PONT DE DIODES MP
35	MP 89 599	MP 600 T HIGH FERRULE	VIROLE HTE MP600 Turbo
36	MP 89 636	ADHESIVE SECURED LABEL	KIT ETIQUETTES AVERTS

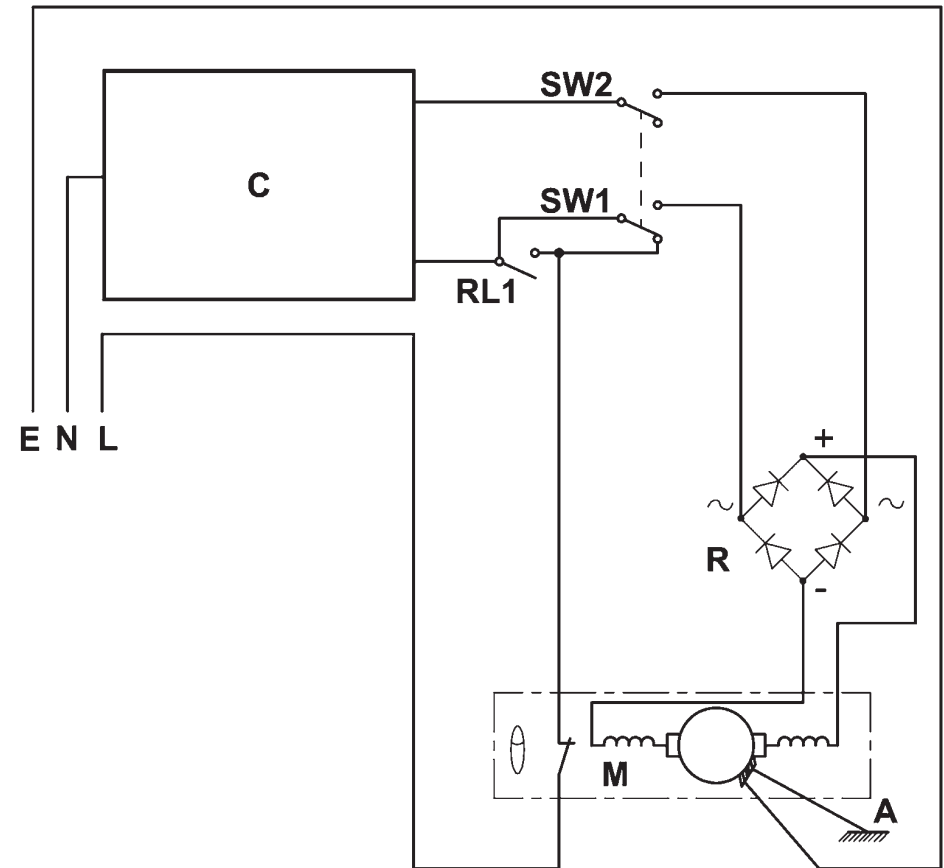
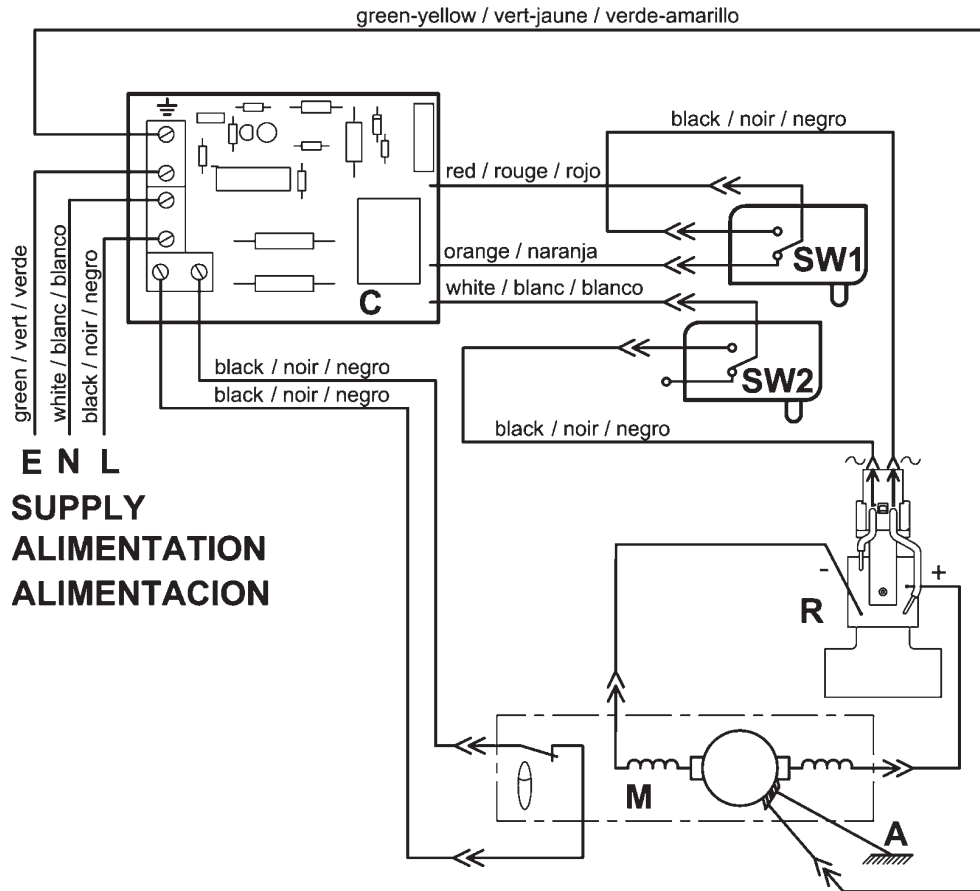


Index	Pièce / Part	Description	Désignation
1	MP 89 019	MOTOR BLOCK	BLOC MOTEUR MP 800 T
2	MP 89 634	MP NSF PROTECTION	PROTECTION NSF MP
3	MP 89 001	MP 800 T COMPLETE FOOT	PIED COMPLET MP 800 T
4	MP 89 002	MP 800 T FOOT	PIED MP 800 T EQUIPEE
5	MP 89 003	MP 800 T DRIVING SHAFT ASSEMBLY	ARBRE D'ENTRAINEMENT MP 800 T EQUIPEE
6	MP 89 004	MP 800 T DRIVING SHAFT	ARBRE D'ENTRAINEMENT MP 800 T
7	MP 89 643	MPC / CMP / CMPC FOOT KIT	KIT PIED MPC / CMP / CMPC
8	MP 89 006	MP 800 T BEARING FOOT	ROULEMENT PIED MP 800 T
9	MP 89 624	STAINLESS STEEL DRIVING FRAME	CAGE D'ENTRAINEMENT INOX
10	MP 89 628	MP / CMP FOOT SEAL	JOINT DE PIED MP / CMP
11	MP 39 344	MP 550 A BELL COVER	CLOCHE INOX MP 550 A EQUIPEE
12	MP 39 345	MP 550 A BLADE	COUTEAU MP 550 A
13	MP 89 625	MPA DRIVING HUB	MOYEU D'ENTRAINEMENT MPA
14	MP 89 397	MP 120V POWER CORD CAP SCREW + SCREW	CABLE ALIM MP 120V + CACHE-VIS + VIS
15	MP 89 533	WATERPROOF NESS + SCREW + CAP SCREW KIT	KIT ETANCHEITE + VIS + CACHE VIS
16	MP 89 534	HANDLE (L+R) + SCREW + CAP SCREW MP	POIGNEE (G+D) + VIS + CACHE VIS MP
17	MP 89 508	VENT COVER (x2)	GRILLE (x2)
18	MP 89 429	MP 600 120V CIRCUIT BOARD	PLATINE MP 600 120V
19	MP 89 427	MP 600 T 120V ELECTRICAL WIRING	FILS ELECTRIQUES MP 600 T 120V
20	MP 89 662	MP / CMP DISMOUNT TOOL	OUTILLAGE DE DEMONTAGE MP / CMP
21	MP 89 007	MP 800 T RACK	SUPPORT MURAL MP 800 T
22	MP 89 622	MP 600 SCREW M4x60	VIS M4x60 MP 600
23	MP 89 530	MP / CMP KNOBS KIT + SCREW + CAP SCREW	KIT BOUTON MP / CMP + VIS + CACHE VIS
24	MP 89 365	MICROSWITCH + SCREW + CAP SCREW	MICRORUPTEUR + VIS + CACHE VIS
25	MP 89 364	COMMAND ARM KIT + SCREW + CAP SCREW	KIT LEVIER DE COMMANDE + VIS + CACHE VIS
26	MP 89 532	MP / CMP HANDLE SCREW (x4)	KIT VIS POIGNEE MP / CMP (x4)
27	MP 89 631	MP 600 SCREWED SPACER (x4)	TIRANT MP 600 (x4)
28	MP 89 620	MP 600 MOTOR FERRULE	VIROLE MOTEUR MP 600
29	MP 89 573	MP 600 VENTILATOR	VENTILATEUR MP 600
30	MP 89 577	MP 600 AIR DUCT	COURONNE DE CANALISATION MP 600
31	MP 89 556	MP 600 T 120V USA MOTOR	MOTEUR MP 600 T 120V USA
32	MP 89 569	MP VENTILATOR PIPE	CONDUIT DE VENTILATION MP
33	MP 89 469	MP 120V BRUSHES KIT (x2)	KIT CHARBONS MP 120V (x2)
34	MP 89 977	MP 600 120V INDUCED CIRCUIT	INDUIT MOT MP 600 120V
35	MP 89 507	MP MOTEUR BEARING	ROULEMENT MOTEUR MP
36	MP 89 615	RECTIFIER BRIDGE	PONT DE DIODES
37	MP 89 008	MP 800 T FERRULE	VIROLE DECOR MP 800 T
38	MP 89 636	ADHESIF SECURED LABEL	KIT ETIQUETTE AVERTISSEMENT
39	MP 89 009	MP 800 T ALUMINIUM CASING	CARTER ALU MP 800 T
40	MP 89 000	MP 800 T STAINLESS-STEEL HANDLE	POIGNEE INOX MP 800 T
41	MP 89 022	MP 800 T HANDLE SCREW	VIS POIGNEE MP 800 T
42	MP 89 023	MP 800 T CAP	BOUCHON MP 800 T EQUIPEE
43	MP 89 024	MP 800 T SEAL CAP	JOINT BOUCHON MP 800 T
44	MP 89 010	MP 800 T DRIVING HUB	MOYEU D'ENTRAINEMENT MP 800 T



<i>Index</i>	<i>Pièce / Part</i>	<i>Description</i>	<i>Désignation</i>
1	89 092	MIXER BOX	BOITE MELANGEUR
2	89 094	WHIPS	FOUET 600
3	89 090	PIGNONS + BAG + BEARING KIT	Kit PIGNONS + BAGUE + ROULEMENT
4	89 379	MP/CMP BF UPPER BODY	COQUE SUP BF MP/CMP
5	89 091	SEAL + WASHER KIT	Kit JOINT + RONDELLE
6	89 088	LOWER BODY	COQUE INF ALU
7	89 077	BEARING + CIRCLIPS + BAG + SEAL	Kit ROULEMENT + CIRCLIPS + BAGUE + JOINT A LEVRE
8	89 076	DRIVING SHAFT	AXE SORTIE
9	89 089	SCREW + CAP SCREW KIT	Kit VIS + CACHE VIS
10	89 093	HANDLES KIT	Kit POIGNEE
11	89 078	PROTECTION	PROTECTION

	English	Français	Espanol
A	Aluminium housing	Carter aluminium	Carter aluminio
C	Control unit	Unité de contrôle	Unidad de control
M	Motor	Moteur	Motor
R	Rectified bridge	Pont de diodes	Rectificador diodo
SW1	On/off switch	Interrupteur marche/arrêt	Interruptor marcha/parada
SW2	On/off switch	Interrupteur marche/arrêt	Interruptor marcha/parada
θ	Thermal protector	Protecteur thermique	Protector termico

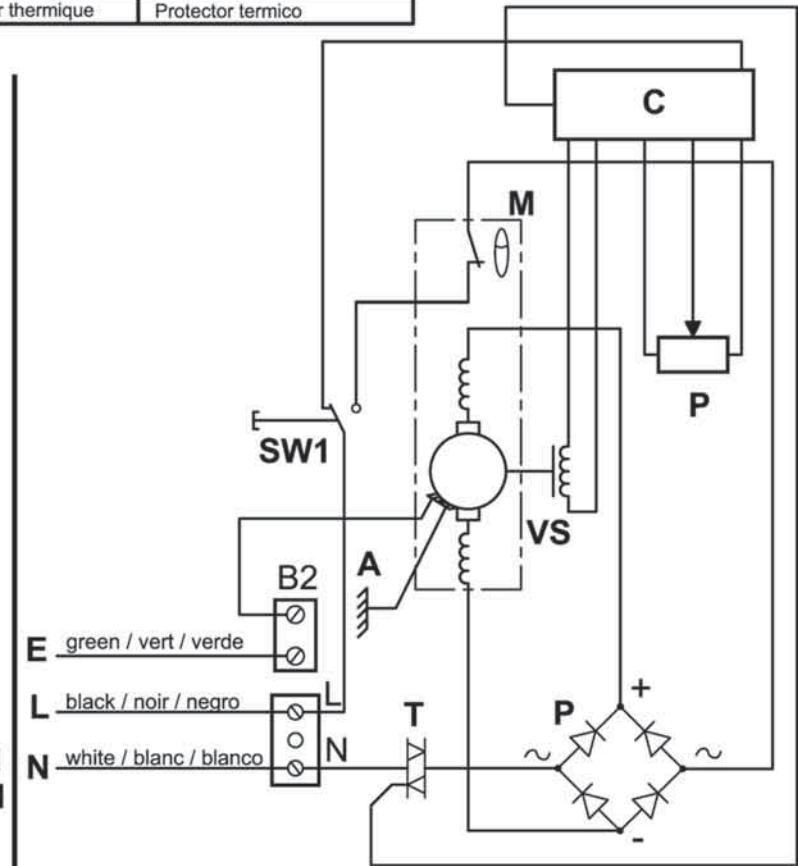
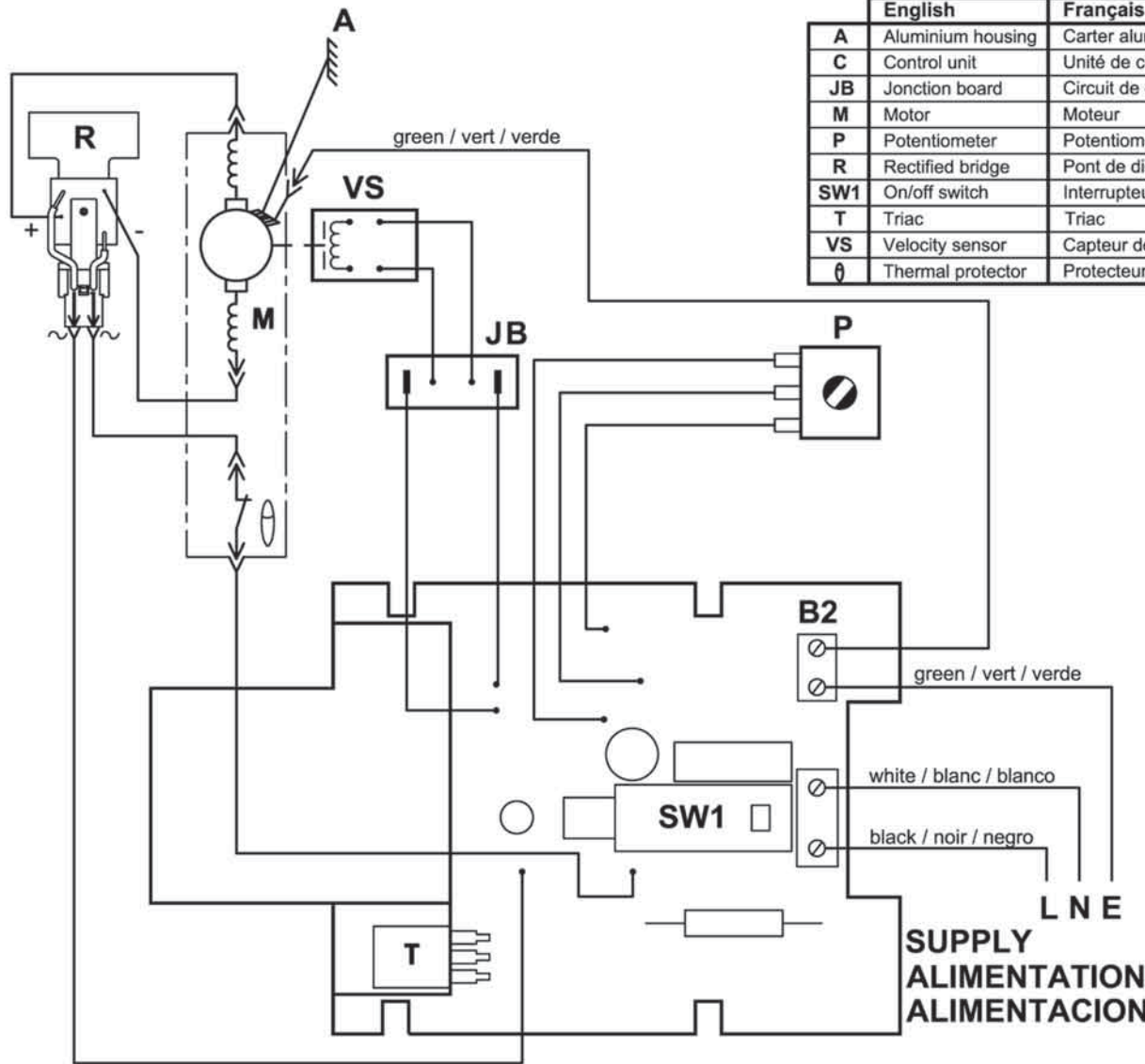


MP450 FW XL SeriesB
SCHEMA ELECTRIQUE

ELECTRIC DIAGRAM

ESQUEMA CONEXIONES

	English	Français	Espanol
A	Aluminium housing	Carter aluminium	Carter aluminio
C	Control unit	Unité de contrôle	Unidad de control
JB	Jonction board	Circuit de connexion	Circuito de conector
M	Motor	Moteur	Motor
P	Potentiometer	Potentiomètre	Potentiometro
R	Rectified bridge	Pont de diodes	Rectificador diodo
SW1	On/off switch	Interrupteur marche/arrêt	Interruptor marcha/parada
T	Triac	Triac	Triac
VS	Velocity sensor	Capteur de vitesse	Captador de velocidad
θ	Thermal protector	Protecteur thermique	Protector termico





robot coupe[®]

P.O. Box 16625, Jackson, MS 39236-6625

264 South Perkins St., Ridgeland, MS 39157

e-mail : robocoup@misnet.com

website : www.robotcoupeusa.com

Phone : 1-800-824-1646