

# BEVERAGE

Solutions

NEW



## BEVERAGE SOLUTIONS





# Infuse if you choose.

## Infuse or chill

More serving options and opportunities from chilled to flavored beverages in our Upscale, Silhouette™ and Stackable plastic beverage dispensers. Assorted styles available in multiple capacities for small to large groups.



Removable infuser tube

Durable BPA-Free Tritan® reservoir



NSF® faucet

8½" faucet clearance



Item #	Description	Capacity	Min Order
<b>SILHOUETTE™ BEVERAGE DISPENSERS—STAINLESS STEEL, BPA-FREE TRITAN® PLASTIC</b>			
N175	NSF® Single, 11¼ x 12¾ x 23½" (8½" faucet clearance)	3½ Gal	1 ea
<b>UPSCALE BEVERAGE DISPENSERS—STAINLESS STEEL, BPA-FREE TRITAN® PLASTIC WITH NICKEL PLATED ABS FAUCET</b>			
7515	Single, 8¼ x 9 x 17¾" (5½" faucet clearance)	1¼ Gal	1 ea
10450	Single, 9¾ x 12½ x 19¾" (6¾" faucet clearance)	2½ Gal	1 ea
10451	Single, 11 x 13½ x 23¾" (7¼" faucet clearance)	4½ Gal	1 ea
75	Single, 10¾ x 11½ x 19½" (6¾" faucet clearance)	2½ Gal	1 ea
85	Single, 12¼ x 13¼ x 24½" (7" faucet clearance)	5 Gal	1 ea



7515



75



85



10450



10451

## UPSCALE

Serve bulk beverages with our upscale beverage dispensers. Each dispenser features a Tritan® Reservoir with brushed stainless steel lid and base. Available in multiple capacities.

- Durable BPA-Free Tritan® Reservoir
- Removable stainless steel ice core and infuser tube
- Hand wash recommended



5 Gallon capacity

Other capacities available

Durable BPA-Free Tritan® Reservoir

Hands free faucet option available (10626)



7" Faucet clearance

85

### FAUCET BEVERAGE DISPENSER

10626 BDGF N175F 75F 75FM	Fits: 10961, 75, 85, BDG1000, BDG2000, BDG3000, 10699, BAD1500, 10090, N175, 953, H953, 954, 955, 1053, 1054, 1055, 353DP, H353DP, 354DP, 356DP, TW53DP, TW33DP, & TW54DP
70F	Fits 70, 71 & 72
71F	Fits 71 & 72

See pages 126 & 127 for faucets and other parts



## ACRYLIC BEVERAGE DISPENSER

Add character and charm to your drink station at your buffet or catered event with this stylish fluted acrylic beverage dispenser.

- Acrylic lid with silicone gasket
- Chrome faucet
- Conveniently packaged for cash & carry



Item #	Description	Capacity	Min Order
<b>FLUTED BEVERAGE DISPENSER—ACRYLIC</b>			
12295	Clear, Acrylic, 7¼ x 9½ x 12"	2 Gal	1 ea

# double ups

## STACKABLE BEVERAGE DISPENSERS



Item #	Description	Capacity	Min Order
<b>PLASTIC STACKABLE BEVERAGE DISPENSERS</b>			
BAD1500	9½ x 10½ x 13½" (4¼" faucet clearance)	1½ Gal	1 ea
10961	Two-Tiered Stackable Beverage Dispenser, 12¼ x 9¾ x 15", (SAN)	(2) 1 Gal	1 ea



BAD1500

Features two complete dispensers; stack together or use independently



10961

## REPLACEMENT FAUCETS

Fit various plastic and/or glass beverage dispensers



N175F



BDGF



75F



75FM



10626

## REPLACEMENT PARTS FOR BEVERAGE DISPENSER 75



75C



75IC



75T



75R



75B

## REPLACEMENT PARTS FOR BEVERAGE DISPENSER 85



85C



85IC



85T



85R



85B



85FH

Item #	Description	Min Order
	REPLACEMENT PARTS (Not in Cash & Carry packaging)	
N175F	NSF® Faucet for N175, Polypropylene (Fits ALL Glass and Plastic Beverage Dispensers)	1 ea
BDGF	Faucet for BAD1500 and BDG Glass Beverage Dispensers	1 ea
75F	Heavy Duty Nickel Plated ABS (Fits ALL Glass and Plastic Beverage Dispensers)	1 ea
75G	Gasket Set for 75 & 85	1 ea
75N	Nut for 75F Faucet for 75 & 85	1 ea
10626	Universal Faucet, Black (Fits ALL Plastic & Glass Beverage Dispensers)	1 ea
75FM	Universal Stainless Steel Faucet, (Fits ALL Glass and Plastic Beverage Dispensers)	1 ea
85FH	Heavy Duty Faucet for 85, Black	1 ea
75B	Base for 75, S/S	1 ea

Item #	Description	Min Order
	REPLACEMENT PARTS (Not in Cash & Carry packaging)	
75C	Cover for 75, S/S	1 ea
75IC	Infuser for 75	1 ea
75R	2.5 Gal Reservoir for 75, BPA-Free	1 ea
175INF	Infuser for 175 & N175, Tritan™ BPA-Free	1 ea
175LID	Lid, S/S (For 175 & N175) Includes Plastic Insert	1 ea
175R	Reservoir for 175 and N175, BPA-Free	1 ea
175SB	Base, S/S for 175 & N175	1 ea
75T	Ice Core Insert, S/S for 75	1 ea
85B	Base, S/S for 85	1 ea
85C	Cover for 85, S/S	1 ea
85IC	Infuser for 85	1 ea
85R	5 Gal Reservoir for 85, BPA-Free	1 ea
85T	Ice Core Insert, S/S for 85	1 ea

# Just fill to Refresh...



BDG1000 Dispenser



BDG2000 Dispenser



BDG3000 Dispenser



10090 Dispenser



10699 Dispenser

## GLASS BEVERAGE DISPENSERS



Choose from a variety of styles: Beehive™, Rustic Country™, Mason Jar, Industrial Collection™ and our Decorative Glassware—mix and match with our range of bases to fit the style of your presentation. Each dispenser brings character and charm to your drink station. Select dispensers include infusion and ice cores (see descriptions below). Chalkboard necklaces are included for labeling your drinks (excludes 10699 Decorative Glass Beverage Dispenser).



### CASH & CARRY

All of our glass beverage dispensers are conveniently packaged for Cash & Carry

Item #	Description	Capacity	Min Order
<b>CLEAR GLASS BEVERAGE DISPENSERS</b>			
BDG1000	Beehive™, Ice Core, Infuser and Black Chalkboard Necklace, 9 x 10¼ x 14½"	2½ Gal	1 ea
BDG2000	Rustic Country™ Resealable Clip-Top Lid, Ice Core, Infuser and Black Chalkboard Necklace, 8¼ x 10½ x 14"	2½ Gal	1 ea
BDG3000	Mason Jar, Ice Core, Infuser and Black Chalkboard Necklace, 7¾ x 10¼ x 12¾"	2 Gal	1 ea
10090	Industrial Collection™, Ice Core, Infuser and Black Chalkboard Necklace, 8 x 10 x 12¾"	2 Gal	1 ea
10699	Decorative Glass, 8½ x 10¼ x 14½"	2 Gal	1 ea
CLEAR GLASS BEVERAGE DISPENSERS REPLACEMENT PARTS (SEE RIGHT)			
10173	Faucet for 10090, Black Plated Plastic		1 ea
10626	Universal Faucet, Black (Fits ALL Glass and Plastic Beverage Dispensers)		1 ea
10174	Lid for 10090, Black Coated Tin, 5¼" dia x ¾"		1 ea
BDGF	Faucet for BAD1500, BDG1000, BDG2000, & BDG3000, Chrome Plated Plastic		1 ea
BDG2000G	Rustic Country Gasket Only		1 ea
BDG2000T	Top, Gasket and Wire Assembly Included (BDG2000)		1 ea
BDG3000T	Top for Mason Jar™ Glass Dispenser (BDG3000)		1 ea
BDGINFCORE	Ice Core and Infuser for BDG1000 & BDG3000		1 ea



# ...Accessorize to Elevate.

## GLASS BEVERAGE DISPENSER ACCESSORIES

Elevate your beverage service! Our stands fit our range of glass beverage dispensers and are available in many options to match with our existing buffet risers and crates to create a consistent look on the serving presentation.



(BDGTUB) doubles as a 1 3/4 gallon ice tub. More options on page 129



12652



12653



12654

Item #	Description	Min Order
<b>CLEAR GLASS BEVERAGE DISPENSERS STANDS</b>		
*BDGTUB	Round Beverage Tub/Base, Galvanized Steel, 9 3/8 x 9 3/8 x 7 3/4" (Fits BDG1000, BDG2000, BDG3000, and 10699, or any dispenser with a base diameter 7 3/4" or less)	1 ea
BDGR1	Single Wire Glass Beverage Dispenser Stand/Rack, Black Powder Coated, (8 1/2" faucet clearance, Fits BDG1000, BDG2000, BDG3000, 10090 and 10699) (opposite page)	1 ea
10262	Industrial Collection™ Dispenser Stand/Rack, Black Powder Coated Steel, (Fits 10090 and BDG2000)	1 ea
12652 ▶	Stand for Glass Beverage Dispensers 10 x 10 x 8", Bamboo (Coated) Fits Glass Beverage Dispensers BDG1000, BDG2000, BDG3000, 10090, & 10699	1 ea
12653 ▶	Stand for Glass Beverage Dispensers Black 10 x 10 x 8", Wood (Painted) Fits Glass Beverage Dispensers BDG1000, BDG2000, BDG3000, 10090, & 10699	1 ea
12654 ▶	Stand for Glass Beverage Dispensers 10 x 10 x 8", Wood (Acacia) Fits Glass Beverage Dispensers BDG1000, BDG2000, BDG3000, 10090, & 10699	1 ea



BDGF



10626



10173



10174



BDG2000T



BDG3000T



BDGINFCORE

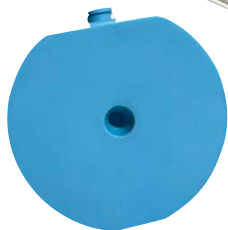
## BEVERAGE DISPENSERS

Perfect addition to your buffet for serving bulk beverages with these new single and double reservoir dispensers.

- Durable polycarbonate reservoir and stainless steel base
- Includes ice ring located below reservoir
- Faucets are not removable



12156



12509



a

Item	Description	Capacity	Min Order
<b>BEVERAGE DISPENSERS – POLYCARBONATE &amp; STAINLESS STEEL</b>			
12156	Single, 14 $\frac{3}{8}$ x 9 x 21"	2 Gal	1 ea
a. 12157	Double, 14 $\frac{3}{8}$ x 17 $\frac{3}{4}$ x 21"	(2) 2 Gal	1 ea
<b>REPLACEMENT PART</b>			
12509	Ice Ring for 12156 & 12157, 5 $\frac{3}{4}$ " dia, HDPE	12 oz	1 ea

# Single | Dual Dispensers

Scan code to view our video on our contactless faucets



## PREMIUM

- An elegant addition to your buffet display
- Available in a single or double reservoir option

## DUAL

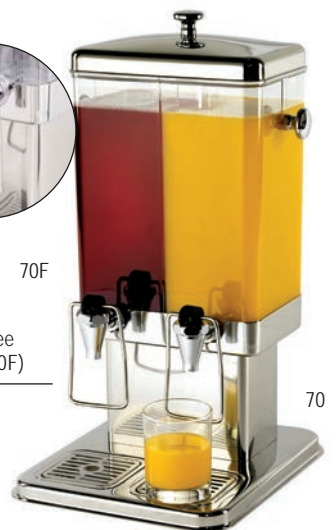
- Perfect addition to your breakfast buffet
- Includes a removable reservoir with built-in drainable ice chamber to keep drinks cool



Item #	Description	Capacity	Min Order
<b>PREMIUM BEVERAGE DISPENSERS—STAINLESS STEEL, POLYCARBONATE</b>			
71	Single, 10¼ x 13¾ x 22¾" (5½" faucet clearance)	2 Gal	1 ea
72	Double, 22 x 13¾ x 21" (5½" faucet clearance)	(2) 2 Gal	1 ea
<b>DUAL BEVERAGE DISPENSERS—STAINLESS STEEL, POLYCARBONATE</b>			
70	Double, 12 x 13¾ x 23" (5½" faucet clearance)	(2) 1½ Gal	1 ea
<b>REPLACEMENT PARTS &amp; ACCESSORIES</b>			
70F	Faucet for 70, Chrome Plated Metal, Contact-free	-	1 ea
71F	Faucet for 71 & 72, Chrome Plated Metal	-	1 ea
70B	Polycarbonate Reservoir for 70	-	1 ea
70HB	Handle for 70	-	1 ea
70HF	Handle for Faucet for 70	-	1 ea
71B	Reservoir for 71 & 72 Beverage Dispenser	-	1 ea



Features push bar contact-free faucets (70F)



A simple way to offer a variety of drinks in a limited serving area



Reservoir fits securely to tapered base, ensures stability and reduces risk of spillage

953



Slimline Dispensers' compact design saves valuable counter space

1054



Touchless faucet (10626) will also fit single and double Slimline models



353DP



TW33DP



## SINGLE & SLIMLINE BEVERAGE DISPENSERS

With detachable reservoirs and quality Tomlinson® faucets, these beverage dispensers keep drink stations simple to clean, easy to refill and quick to serve. Graduated measurements displayed on the side of reservoir for efficient and consistent filling.



955

Item #	Description	Capacity	Min Order
<b>POLYPROPYLENE BEVERAGE DISPENSERS (7" FAUCET CLEARANCE)</b>			
953	Single, 10 $\frac{1}{8}$ x 12 $\frac{1}{2}$ x 16 $\frac{3}{4}$ ", Black	3 Gal	1 ea
*H953	Single, 10 $\frac{1}{8}$ x 12 $\frac{1}{2}$ x 16 $\frac{3}{4}$ ", Black	3 Gal	2 ea
954	Single, 10 $\frac{1}{8}$ x 12 $\frac{1}{2}$ x 16 $\frac{3}{4}$ ", Brown	3 Gal	1 ea
955	Single, 10 $\frac{1}{8}$ x 12 $\frac{1}{2}$ x 16 $\frac{3}{4}$ ", Yellow	3 Gal	1 ea
1053	Single, 10 $\frac{1}{8}$ x 12 $\frac{1}{2}$ x 22 $\frac{1}{4}$ ", Black	5 Gal	1 ea
1054	Single, 10 $\frac{1}{8}$ x 12 $\frac{1}{2}$ x 22 $\frac{1}{4}$ ", Brown	5 Gal	1 ea
1055	Single, 10 $\frac{1}{8}$ x 12 $\frac{1}{2}$ x 22 $\frac{1}{4}$ ", Yellow	5 Gal	1 ea
<b>SLIMLINE POLYPROPYLENE BEVERAGE DISPENSERS (8<math>\frac{1}{4}</math>" FAUCET CLEARANCE)</b>			
353DP	Single, 8 x 16 $\frac{1}{8}$ x 20 $\frac{1}{2}$ ", Black	3 Gal	1 ea
*H353DP	Single, 8 x 16 $\frac{1}{8}$ x 20 $\frac{1}{2}$ ", Black	3 Gal	2 ea
354DP	Single, 8 x 16 $\frac{1}{8}$ x 20 $\frac{1}{2}$ ", Brown	3 Gal	1 ea
356DP	Single, 8 x 16 $\frac{1}{8}$ x 20 $\frac{1}{2}$ ", Almond	3 Gal	1 ea
TW53DP	Double, 18 $\frac{1}{2}$ x 15 $\frac{3}{4}$ x 20 $\frac{1}{2}$ ", Black	(2) 3 Gal	1 ea
TW33DP	Double, 18 $\frac{1}{2}$ x 15 $\frac{3}{4}$ x 20 $\frac{1}{2}$ ", Almond	(2) 3 Gal	1 ea
TW54DP	Double, 18 $\frac{1}{2}$ x 15 $\frac{3}{4}$ x 20 $\frac{1}{2}$ ", Brown	(2) 3 Gal	1 ea
<b>REPLACEMENT PARTS &amp; ACCESSORIES, POLYPROPYLENE</b>			
953F	Standard Faucet Assembly, Black	-	1 ea
953FW	Standard Faucet Assembly, White	-	1 ea
852F	Heavy Duty Tomlinson® Faucet Assembly, Black	-	1 ea
1053WB	Reservoir for 1053, 1054 & 1055	5 Gal	1 ea
354WB	Reservoir for 353 & TW54 Dispensers	-	1 ea
953WB	Reservoir for 953, 954 & 955	3 Gal	1 ea
353B	Black Single Base for 353 Dispensers	-	1 ea
354B	Brown Base for 354 Dispensers	-	1 ea
356B	Almond Base for 356 Dispensers	-	1 ea
TW33B	Almond Base for TW33 Dispensers	-	1 ea
953B	Black Base for 953 & 1053	-	1 ea
954B	Brown Base for 954 & 1054	-	1 ea
955B	Yellow Base for 955 & 1055	-	1 ea
353C	Black Cover for 353 Dispensers	-	1 ea
354C	Brown Cover for 354 & TW54 Dispensers	-	1 ea
356C	Almond Cover for 356 & TW33 Dispensers	-	1 ea
953C	Black Cover for 953 & 1053	-	1 ea
954C	Brown Cover for 954 & 1054	-	1 ea
955C	Yellow Cover for 955 & 1055	-	1 ea

\*Available as Cash & Carry

## INFUSION PITCHERS

- Infuser for fresh herbs and fruits to add a refreshing twist to water
- Disassembles for easy cleaning



BPA FREE



## ICE CORE PITCHER



PP322FIN



319

## PREMIUM SERVERS



RP68

Remington Collection™ Pitcher features base, ice guard & rice pattern



300

Highly polished Stainless Steel



Hive Collection Pitcher features built-in ice guard and textured honeycomb pattern



12853

## BEVERAGE PITCHERS

BPA FREE



364



PP321

Lid features free flow and ice guard

Item #	Description	Capacity	Min Order
<b>INFUSION PITCHERS—SAN PLASTIC, CLEAR</b>			
*PP322FIN	Infusion Pitcher with Lid, SAN Plastic	2 qt	1 ea
<b>ICE CORE PITCHERS—POLYCARBONATE</b>			
319	Pitcher with Center Ice Core	2 qt	1 ea
328	Pitcher with Center Ice Core	3 qt	1 ea
<b>REPLACEMENT PARTS</b>			
319IC	Ice Core for 319 & 328	-	1 ea
319INF	Infuser Tube for 319 & 328	-	1 ea
319T	2-pc Lid for 319	-	1 ea
328T	2-pc Lid for 328	-	1 ea
<b>PREMIUM WATER SERVERS—18/8 STAINLESS STEEL, MIRROR FINISH</b>			
202	Pitcher	2 qt	1 ea
203	Pitcher	3 qt	1 ea
300	Pitcher, Ice Guard	2 qt	1 ea
RP68	Remington Collection™ Pitcher with Base, Ice Guard	2 qt	1 ea
12853 ▶	Hive Collection Pitcher	2½ qt	1 ea
<b>BEVERAGE PITCHERS—SAN PLASTIC, CLEAR</b>			
364	Clear Pitcher	60 oz	1 ea
PP321	Pitcher with Lid	2 qt	1 ea
<b>ECONOMY SERVERS—POLYPROPYLENE</b>			
144GRT	Granite, Black Lid	2½ qt	1 ea
144W	White, Blue Lid	2½ qt	1 ea

For full Remington Collection™ assortment, see page 79

## ECONOMY SERVERS

- Featuring 3-Way Sanitary Lid



BPA FREE



144GRT



144W

**NEW**

## PREMIUM PITCHERS WITH ICE GUARD



Elevate your table service or next event with our premium stainless steel pitchers, featuring built-in ice guards for smooth, splash-free pouring. Available in three sizes, these pitchers combine lasting durability with sleek, professional style--making every pour effortless

- 18/8 stainless steel construction
- Available in three sizes
- Dishwasher safe



12812



12813



12814



12900



12901



12902

Item #	Description	Capacity	Min Order
<b>PREMIUM PITCHER - STAINLESS STEEL</b>			
12812 ▶	Premium Pitcher w/ Ice Guard	½ L	1 ea
12813 ▶	Premium Pitcher w/ Ice Guard	1 L	1 ea
12814 ▶	Premium Pitcher w/ Ice Guard	1½ L	1 ea
<b>GLASS PITCHER W/ STAINLESS STEEL LIDS</b>			
12900 ▶	Glass Pitcher w/ Stainless Steel Dispensing Lids, Glass (Borosilicate)	17 oz	1 ea
12901 ▶	Glass Pitcher w/ Stainless Steel Dispensing Lids, Glass (Borosilicate)	34 oz	1 ea
12902 ▶	Glass Pitcher w/ Stainless Steel Dispensing Lids, Glass (Borosilicate)	50 oz	1 ea

# BEVERAGE CARAFES



Lid snaps closed for a tight seal

## RESEALABLE WATER SERVERS



Break-resistant carafes with a snap-seal-lids seal tightly to protect from contamination.



11799 11800 11801 11802

**NEW**

## FLUTED RESEALABLE CARAFES

Elevate your tabletop with these fluted resealable carafes, available in two sizes. The secure, resealable top keeps drinks fresh and makes transport safe and easy, combining style with practical convenience.

- Hand wash recommended
- Conveniently packaged for cash & carry

**NEW**

## DECORATIVE CARAFI



Add a touch of sophistication to any setting with our glass decorative carafe. Perfect for serving water, wine, or juices, its beautiful design enhances your table while offering practical elegance for everyday use or special occasions.

- Dishwasher safe
- Conveniently packaged for cash & carry

Item #	Description	Capacity	Min Order
<b>POLYCARBONATE CARAFE WITH POLYPROPYLENE LID</b>			
*10715	Carafe with Lid, Plastic	11 oz	1 ea
*10716	Carafe with Lid, Plastic	19 oz	1 ea
*10717	Carafe with Lid, Plastic	36 oz	1 ea
<b>TEMPLATE-STAINLESS STEEL</b>			
10817	Template for 19 and 36 oz Carafes & 32 oz Squeeze Bottles, (3) 85mm Holes, Fits 1/3 Size Food Pans (not included)		1 ea
<b>BEVERAGE CARAFES-PLASTIC, CLEAR</b>			
*10111	Gravity Pour Carafe with Strainer	1 1/4 Qt	1 ea
*11799	Clear Carafe with Lid	34 oz	1 ea
*11800	Honeycomb Carafe with Lid	34 oz	1 ea
*11801	Fluted Carafe with Lid	34 oz	1 ea
*11802	Tapered Carafe with Lid	34 oz	1 ea
<b>REPLACEMENT PARTS &amp; ACCESSORIES</b>			
10866	Replacement Lid for 10715 & 10716		1 ea
10867	Replacement Lid for 10717		1 ea
12287	Replacement Lid for 11799, 11800, 11801		1 ea
12288	Replacement Lid for 11802		1 ea
<b>FLUTED RESEALABLE CARAFES</b>			
12975 ▶	Resealable Carafe, Clear Fluted, Glass (Clear Soda Lime Glass)	17 oz	1 ea
12976 ▶	Resealable Carafe, Clear Fluted, Glass (Clear Soda Lime Glass)	34 oz	1 ea
<b>DECORATIVE CARAFE</b>			
12890 ▶	Decorative Carafe, Glass (Clear Soda Lime Glass)	34 oz	1 ea

\*Available as Cash & Carry



12975



12976



12890

# GLASS WATER SERVERS

Upscale your beverage service.



## AUTHENTIC COLLECTION™

Our recycled green glass bottles will enhance any water service or tabletop presentation. Decorative embellishments add vintage charm and eclectic style to every environment. Due to the nature of recycled glass, slight color variations, bubbles and small lines develop during molding; making each bottle unique.



You can see more of our Authentic Collection™ on page 137

Item #	Description	Capacity	Min Order
<b>AUTHENTIC COLLECTION™ WATER SERVERS-RECYCLED GREEN GLASS</b>			
6630	Apothecary Bottle	40 oz	1 ea
6631	Bottle with Cork	34 oz	1 ea
6632	Resealable Bottle	50 oz	1 ea
a. 6621	Resealable Bottle	33 oz	6 ea
<b>REPLACEMENT PARTS</b>			
6631C	Cork Stopper for 6631	-	1 ea

## RESEALABLE WATER SERVERS

Silicone seal and snap-lock closure for safe storage and transport.



Item #	Description	Capacity	Min Order
<b>RESEALABLE WATER SERVERS-GLASS</b>			
RGC34	Carafe	34 oz	6 ea
RSB33	Bottle	34 oz	12 ea

RGC34

RSB33



Custom imprinting available, contact your TableCraft representative for further information.

# get it to-go



## TO-GO BEVERAGE POUCHES

Pack up your house beverages to-go with TableCraft's plastic beverage pouches. They're a fun alternative to plastic, styrofoam, or a paper cup! Available in varying capacities to fill with your drink specials, juices, mixers, fruits or veggies and more! Perfect for carry out and to-go beverages for your customers to enjoy from the comforts of their own homes. Pouches also work well to store and seal food and ingredients to prepare take away meal kits. Translucent polyethylene pouch design opens so you can stand it up; making filling and prepping simple and easy.

- Cash & Carry packs available for 10 and 16 ounce capacity pouches
- Single use recyclable plastic
- Freezer safe
- For use with cold beverages and food items



View our video on the To-Go Pouches

Works with our paper straws, see table below to check out coordinating straws that you can pack up with the To-Go Pouch!

Pouch:	Fits Straw(s):
10 oz	6mm Straws (7¾" & 10")
16 oz	6mm Straws (7¾" & 10")
32 oz	6mm Straws (7¾" & 10")

Item #	Description	Count Per Pack	Min Order
<b>TO-GO POUCHES, TRANSLUCENT POLYETHYLENE</b>			
a.	*10681 10 oz Pouch	100	1 pk
b.	*10682 16 oz Pouch	100	1 pk
	10683 32 oz Pouch	100	1 pk

Straws not included

## PLA & PAPER STRAWS

- A variety of use serving options to choose from
- Paper straws are made from food grade materials
- PLA straws are a compostable plastic alternative to standard plastic straws
- See Beverage page 140 for more information



Individually wrapped straws promote safer more sanitary serving practices

Paper

PLA

Item #	Description	Count Per Pack	Min Order
<b>PLA STRAWS, UNWRAPPED</b>			
100105	5¾" (5mm) Cocktail, Black	1000	20 pk
700106	7¾" (8mm) Black	300	24 pk
<b>PLA STRAWS, INDIVIDUALLY WRAPPED</b>			
100102	7¾" (5mm) Natural	300	24 pk
100107	7¾" (5mm) Black	300	24 pk
700102	7¾" (8mm) Natural	300	24 pk
700107	7¾" (8mm) Black	300	24 pk
700104	10" (8mm) Natural	300	24 pk
700109	10" (8mm) Black	300	24 pk
<b>PAPER STRAWS, UNWRAPPED</b>			
100110	5¾" (6mm) Black Striped, Cocktail	500	6 pk
100138	5¾" (6mm) Solid Black, Cocktail	500	6 pk
100132	7¾" (6mm) Solid Black	500	6 pk
700132	7¾" (8mm) Solid Black	500	6 pk
<b>PAPER STRAWS, INDIVIDUALLY WRAPPED</b>			
100113	7¾" (6mm) Black Striped	500	6 pk
100125	7¾" (6mm) Red Striped	500	12 pk
100133	7¾" (6mm) Solid Black	500	6 pk
100129	7¾" (6mm) Solid White	500	6 pk
700133	7¾" (8mm) Solid Black	500	6 pk
700129	7¾" (8mm) Solid White	500	6 pk

To Store and Serve (see next page)

Our classic Stainless Steel, two-sided straw dispenser (#237) holds up to 500 wrapped straws. Our cylinder-shape straw dispenser (H714CH) adds a great touch of nostalgia to any tabletop service at delis, diners, ice cream shops, etc. and holds 72 straws (up to 7 3/4" length). Both dispensers are easy to fill and clean. (Straws shown not included.)

Item #	Description	Capacity	Min Order
<b>COUNTERTOP WASTE BIN</b>			
WM1	Countertop Waste Bin, Brushed Stainless Steel	45 oz	1 ea

# Eco-friendly

i'll drink to that!

NATURAL



SOLID BLACK



SOLID WHITE



BLACK STRIPED



RED STRIPED



3 diameters to choose from (actual size)



5MM



6MM



8MM

For sanitary reasons, single use only



## COUNTERTOP WASTE BIN

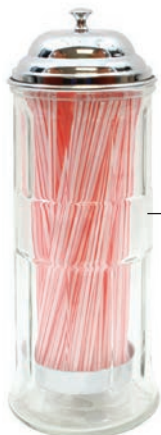
- Swing top





## STIR STICK & STRAW DISPENSERS

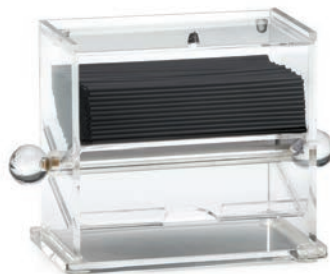
- Acrylic, stainless steel, and fluted glass options



H714CH

Works well with our 7¾" straws (see page 141)

Ships with 65 red & white plastic straws



226



237

Item #	Description	Min Order
<b>STIR STICK &amp; STRAW DISPENSERS</b>		
226	Stir Stick Dispenser, Acrylic, 6½ x 3½ x 5½" for 5½" stir sticks	1 ea
237	Two-Sided Straw Dispenser, Stainless Steel, 9½ x 7 x 7¼" (Holds up to 500 individually wrapped 9¼" straws)	1 ea
*H714CH	Glass Straw Dispenser, Chrome Plated Insert, 4½" dia x 11½" (Holds up to 8¼" straws) Includes 65 red & white striped straws (shown left)	1 ea

\*Available as Cash & Carry



## DRIP TRAYS

- Catches condensation, keeping surfaces free from water rings
- Anti-slip rubber options available to keep tray from sliding while in use



11171



11172

2-Piece construction comes apart for easy cleaning



6BK



View a video on the benefits of our Drip Trays!



10482

## NO DRIP FAUCET

No drip faucet great for dispensing liquid from a "Bag-in-Box".

- Made from polypropylene
- BPA free
- Collar is made to fit 38 mm threads
- Hand wash only

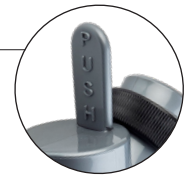


BPA FREE



12052

Also perfect for pouring consistent stream of sauces and condiments from "Bag-in-Box" packaging for front- or back-of-the-house



Item #	Description	Capacity	Min Order
<b>DRIP TRAYS</b>			
11171	Square, 2-Piece Drip Tray, 6" dia x 5/8"	-	1 ea
a. 11172	Round, 2-Piece Drip Tray, 5 1/2" dia x 5/8"	-	1 ea
6BK	Round Tray, 6 3/4" dia x 1"	-	1 ea
10482	Rectangular, 19 x 4 1/8", Stainless Steel	-	1 ea
<b>NO DRIP FAUCET-POLYPROPYLENE (PP)</b>			
12052	Gray, 1 1/4 x 3 1/4 x 3 3/8", For Bag in the Box	-	1 ea



## BEVERAGE TUBS

### SINGLE OR DOUBLE WALL

- Galvanized Collection™ tubs feature pebbled texture
- Tubs feature a variety of materials and finishes: galvanized, crackle, pebbled, brushed, hammered, wave or rice pattern
- Designs feature handles for easy lifting

### BEVERAGE TUB SETS

- Large beverage tub design for high volume beverage service
- Perfect for both indoor and outdoor events
- Brickhouse Collection™ Tub Set includes condensation tray to catch moisture and keep serving areas clean and reduce the risk of slipping hazards.
- Black metal stand (BTS2137) fits both single and double wall tubs



GTSS2313N

Stand disassembles for easy storage; some assembly is required



BTSD21

BTS2137

Item #	Description	Capacity	Min Order
<b>SINGLE WALL BEVERAGE TUBS—GALVANIZED STEEL</b>			
BDGTUB	Tub/Base, Round, 9 $\frac{5}{8}$ " dia x 7 $\frac{3}{4}$ "	1 $\frac{3}{4}$ Gal	1 ea
GT159	Oval, 15 x 8 $\frac{5}{8}$ x 7 $\frac{3}{8}$ ", Pebbled Finish	1 $\frac{3}{4}$ Gal	1 ea
GT1515	Round, 15" dia x 7 $\frac{3}{8}$ ", Pebbled Finish	4 $\frac{1}{2}$ Gal	1 ea
BT1914	Oval, 22 $\frac{3}{4}$ x 14 $\frac{1}{2}$ x 9 $\frac{1}{2}$ "	5 $\frac{1}{2}$ Gal	1 ea
HBT1914	Oval, 22 $\frac{3}{4}$ x 14 $\frac{1}{2}$ x 9 $\frac{3}{4}$ "	5 $\frac{1}{2}$ Gal	6 ea
GT2313	Oval, Pebbled Texture, 22 $\frac{3}{4}$ x 12 $\frac{1}{4}$ x 7 $\frac{1}{2}$ "	4.4 Gal	1 ea
<b>BALI COLLECTION™ BEVERAGE TUB—STAINLESS STEEL</b>			
BT2013	Oval Tub, 20 $\frac{1}{2}$ x 13 $\frac{1}{2}$ x 8 $\frac{3}{4}$ "	4 Gal	1 ea
BT1815	Oval Double Wall Tub, 18 x 15 $\frac{1}{4}$ x 8 $\frac{3}{4}$ "	5 Gal	1 ea
<b>REMINGTON COLLECTION™ DOUBLE WALL BEVERAGE TUBS</b>			
BTB1610	Round Tub with Base, Rice Pattern, 15 $\frac{3}{4}$ " dia x 9 $\frac{1}{2}$ "	6 Gal	1 ea
BTB2111	Round Tub with Base, Rice Pattern, 20 $\frac{1}{2}$ " dia x 11"	9 Gal	1 ea
<b>DOUBLE WALL BEVERAGE TUBS</b>			
BT199	Round Tub, Brushed Finish, 19" dia x 9"	6 $\frac{3}{4}$ Gal	1 ea
WBT14	Round Tub, Wave Pattern, 14 $\frac{1}{2}$ " dia x 7 $\frac{1}{2}$ "	3 Gal	1 ea
WBT199	Round Tub, Wave Pattern, 19" dia x 9"	6 $\frac{3}{4}$ Gal	1 ea
<b>REPLACEMENT PARTS</b>			
BTHDL	Handles For Beverage Tubs - BT199, WBT199, WBT14, BTB1610	-	1 ea
<b>BRICKHOUSE COLLECTION™ SINGLE WALL BEVERAGE TUB SET—STAINLESS STEEL, BLACK POWDER COATED STEEL</b>			
GTSS2313N	Set includes Tub, Stand, Accessory & Condensation Trays (Overall 27 $\frac{1}{2}$ x 15 x 32")	12 $\frac{3}{4}$ Gal	1 ea
<b>REPLACEMENT PARTS &amp; ACCESSORIES</b>			
GTSS2313	Beverage Tub, 27 $\frac{1}{2}$ x 15 x 10 $\frac{3}{4}$ "	12 $\frac{3}{4}$ Gal	1 ea
GTSS2313CT	Condensation Tray, 23 $\frac{3}{4}$ x 12 $\frac{3}{4}$ x 1 $\frac{1}{8}$ "	-	1 ea
GTSS2313AT	Accessory Tray, 24 $\frac{3}{4}$ x 12 $\frac{1}{2}$ x 2 $\frac{1}{4}$ "	-	1 ea
GTSS2313S	Beverage Tub Stand, 23 $\frac{1}{2}$ x 12 $\frac{3}{4}$ x 22 $\frac{1}{2}$ "	-	1 ea
<b>BEVERAGE TUB SET—STAINLESS STEEL, BLACK POWDER COATED STEEL</b>			
BT2137N	Set includes Single Wall Tub & Stand, (Overall size, 21 $\frac{3}{4}$ " dia x 37 $\frac{1}{2}$ " )	11 Gal	1 ea
BTSD21	Set includes Double Wall Tub & Stand, (Overall size, 21 $\frac{3}{4}$ " dia x 37 $\frac{1}{2}$ " )	7 Gal	1 ea
<b>REPLACEMENT PARTS &amp; ACCESSORIES</b>			
BTS2137	Black Metal Stand for BT21, BTSD21, 21 $\frac{3}{4}$ " dia x 30"	-	1 ea
<b>HIVE COLLECTION BEVERAGE TUBS</b>			
12851 ▶	Round Beverage Tub with Base Mirror, Stainless Steel (14-1), Double Wall	4 $\frac{1}{2}$ Gal	1 ea
12852 ▶	Round Beverage Tub Mirror, Stainless Steel (14-1), Double Wall	9 Gal	1 ea

\*For the full Galvanized Collection™, see page 145; for the full Remington Collection™, see page 145; for full Brickhouse Collection™, see page 143.

## SINGLE WALL

Can also be used as a base for select beverage dispensers (see page 129)



BDGTUB



GT159



GT1515



BT1914



GT2313



BT2013



BT1815

## DOUBLE WALL



BTB1610



BT199



WBT14



WBT199

## NEW HIVE COLLECTION BEVERAGE TUBS



Scan QR code for Hive Collection YouTube video



12851



12852

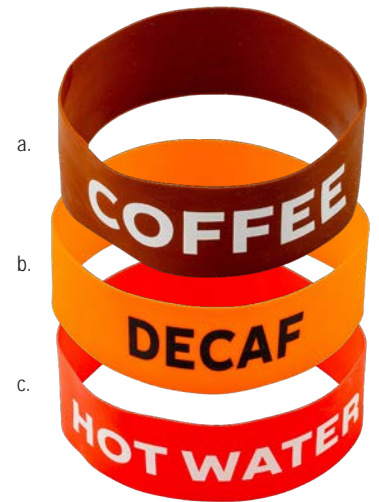
**NEW**

# AIRPOTS



Our new Stainless Steel Airpots feature double-wall, vacuum insulation to keep coffee or other beverages hot or cold for up to 6 hours. Designed with an easy push-button dispenser and on/off lock, they ensure convenient and secure self-service and perfect for breakfast buffets, meeting rooms, or events.

- Stainless steel exterior and liner
- Available in silver and black PVD
- Convenient carrying handle
- 360° swivel base for convenient serving from any direction
- Airpots packaged for cash & carry
- Decaf orange lid sold separately
- Hand wash only
- Airpots are conveniently packaged for cash and carry
- Replacement parts and accessories are not packaged for cash and carry



Item #	Description	Capacity	Min Order
<b>AIRPOTS</b>			
*12658 ▶	Stainless Steel Airpot, 6 x 8½ x 14"	2½ L	1 ea
*12659 ▶	Stainless Steel Airpot, 6 x 8½ x 15¼"	3 L	1 ea
*12660 ▶	Black PVD Stainless Steel Airpot, 6 x 8½ x 14"	2½ L	1 ea
*12661 ▶	Black PVD Stainless Steel Airpot, 6 x 8½ x 15¼"	3 L	1 ea
<b>AIRPOT LIDS</b>			
12688 ▶	Decaf Lid for Airpots (fits 12658-12661), Black with Orange Push Insert	-	1 ea
13061 ▶	Airpot Replacement Lid for 12658, 12659, 12660, and 12661, Black	-	1 ea
<b>AIRPOT ACCESSORIES</b>			
13062 ▶	Airpot Replacement Dip Tube for 12658, 12660	-	1 ea
13063 ▶	Airpot Replacement Dip Tube for 12659 and 12661	-	1 ea
<b>AIRPOT BANDS</b>			
a. 13090 ▶	"Coffee", Brown Silicone with White Lettering, 5 x 5 x 2"	-	1 ea
b. 13091 ▶	"Decaf", Orange Silicone with Black Lettering, 5 x 5 x 2"	-	1 ea
c. 13092 ▶	"Hot Water", Red Silicone with White Lettering, 5 x 5 x 2"	-	1 ea



**NEW**

## WOOD & METAL

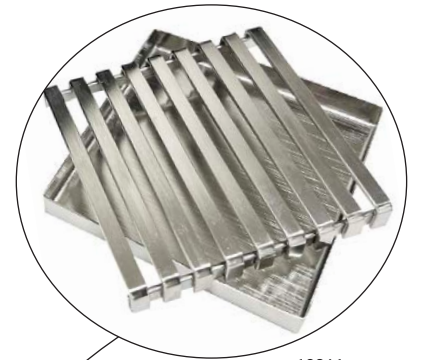
### AIRPOT RACKS

Showcase and organize your airpot with an elegant wood or sleek metal rack holder, designed to hold a single airpot securely.

- All racks include a 3½ x 3½ x ½" stainless steel drip tray
- All racks will accommodate an airpot with a 6¼" dia.
- Bamboo Wood constructed racks available in natural or black painted
- Black powder coated steel
- Hand wash only



Item #	Description	Min Order
<b>AIRPOT RACKS</b>		
12643 ▶	Single Airpot Rack, Natural Bamboo, 7 x 10¼ x 10¼	1 ea
12644 ▶	Single Airpot Rack, Black Painted Bamboo, 7 x 10¼ x 10¼	1 ea
a. 12782 ▶	Single Airpot Rack Black Powder Coated Steel, 6½ x 10½ x 10¾"	1 ea
12961 ▶	Stainless Steel Square Diptray for Airpot Racks 12782, 12643, and 12644	1 ea



12961



12643



12644

**NEW**

## COLORED COFFEE CARAFES



These vacuum-insulated stainless steel coffee carafes are built to keep drinks hot or cold for up to 6 hours. Lightweight and durable, they're easy to carry and pour, making them perfect for breakfast buffets, self-serve stations, or catered events.

- Stainless steel exterior
- Stainless steel (18/8) liner
- Available in 3 colors: Stainless steel, Gold or Black PVD
- Decaf lid sold separately
- Hand wash recommended
- Carafes conveniently packaged for cash & carry
- Decaf lids are not packaged for cash & carry



12674-12676



12677-12679



12680-12682

Item #	Description	Capacity	Min Order
<b>COLORED COFFEE CARAFES - STAINLESS STEEL (18-8)</b>			
*12674 ▶	Coffee Carafe, 7 x 5½ x 8½"	1 L	1 ea
*12675 ▶	Coffee Carafe, 7 x 5½ x 9¼"	1½ L	1 ea
*12676 ▶	Coffee Carafe, 7 x 5½ x 10½"	2 L	1 ea
*12677 ▶	Gold Coffee Carafe, 7 x 5½ x 8½"	1 L	1 ea
*12678 ▶	Gold Coffee Carafe, 7 x 5½ x 9¼"	1½ L	1 ea
*12679 ▶	Gold Coffee Carafe, 7 x 5½ x 10½"	2 L	1 ea
*12680 ▶	Black Coffee Carafe, 7 x 5½ x 8½"	1 L	1 ea
*12681 ▶	Black Coffee Carafe, 7 x 5½ x 9¼"	1½ L	1 ea
*12682 ▶	Black Coffee Carafe, 7 x 5½ x 10½"	2 L	1 ea
<b>REPLACEMENT PARTS</b>			
13064 ▶	Lid for Colored Carafes (fits 12674-12682 Carafes), 3¾ x 2¾ x 1¾", Chrome Plated (Polypropylene)	-	1 ea
12683 ▶	Decaf Lid for Colored Carafes (fits 12674-12682 Carafes), 3¾ x 2¾ x 2", Chrome Plated (Polypropylene) with Orange Thumb Press	-	1 ea



All carafes ship in full color cash & carry packaging



13064



12683



## COFFEE URNS



Dress up your buffet line and ensure your coffee stays warm with these stainless steel coffee urns. Guests can serve themselves with ease with the no-drip faucet and the removable lid makes it easy to replenish the contents.

- Single wall stainless steel construction
- Available in 2 capacities - 3 and 5 gallon
- Intended for use with a chafer fuel burner (not included)
- 4¾" faucet clearance



12155

Item #	Description	Min Order
<b>COFFEE URNS - POLISHED STAINLESS STEEL</b>		
a. 12154	3 Gallon, 13¾ x 12¼ x 19¾"	1 ea
12155	5 Gallon, 13¾ x 12¼ x 24½"	1 ea



1604

See Bar Collection for condiment holder



No-Drip Faucet



Easy to refill

## INSULATED SWIRL CARAFES

- Triple wall insulation to keep drinks hot or cold up to 4 hours
- Features thumb-press for serving
- Color identification tags included with every carafe



# Hot beverage essentials



## COFFEE CARAFES

- Vacuum insulated to keep drinks hot or cold for up to 6 hours
- Thumb-press for easy serving
- Dishwasher safe, but hand wash is recommended



Item #	Description	Capacity	Min Order
<b>SWIRL CARAFES-PLASTIC</b>			
*1001302	White Carafe	20 oz	1 ea
*1001402	White Carafe	40 oz	1 ea
*1001502	White Carafe	64 oz	1 ea
*1001301	Black Carafe	20 oz	1 ea
*1001401	Black Carafe	40 oz	1 ea
*1001501	Black Carafe	64 oz	1 ea
<b>COFFEE CARAFES-STAINLESS STEEL AND BLACK PLASTIC ACCENTS</b>			
*10297	Carafe	34 oz	1 ea
*10298	Carafe	50 oz	1 ea
*10299	Carafe	68 oz	1 ea
<b>COFFEE DECANTERS-STAINLESS STEEL, PETG &amp; POLYPROPYLENE</b>			
18	Black Handle	64 oz	1 ea
19	Orange Handle	64 oz	1 ea
<b>REPLACEMENT PARTS &amp; ACCESSORIES</b>			
10300	Replacement Lid for Coffee Carafes (10297-10299)		1 ea
1002501	Replacement Lid for 20 oz Coffee Server, Black PPY (fits 1001301)	-	1 ea
1002502	Replacement Lid for 20 oz Coffee Server, White PPY (fits 1001302)	-	1 ea
1002601	Replacement Lid for 40 oz Coffee Server, Black PPY (fits 1001401)	-	1 ea
1002602	Replacement Lid for 40 oz Coffee Server, White PPY (fits 1001402)	-	1 ea
1002701	Replacement Lid for 64 oz Coffee Server, Black PPY (fits 1001501)	-	1 ea
1002702	Replacement Lid for 64 oz Coffee Server, White PPY (fits 1001502)	-	1 ea
12798	Decaf lid for 10297, 10298, 10299	-	1 ea

## COFFEE DECANTERS

- Dishwasher safe, but hand wash is recommended



**NEW**

**PLASTIC  
COFFEE CARAFES**



These vacuum-insulated plastic coffee carafes are built to keep drinks hot or cold for up to 4 hours. Lightweight and durable, they're easy to carry and pour, making them perfect for breakfast buffets, self-serve stations, or catered events.

- Plastic construction with glass liner
- Screw-off lid includes push press for controlled serving
- Hand wash recommended
- Carafes conveniently packaged for cash & carry
- Decaf and replacement lids are not packaged for cash & carry



Item #	Description	Capacity	Min Order
<b>COFFEE CARAFES</b>			
*12662 ▶	White Plastic Coffee Carafe w/ Glass Liner, 7 x 6 x 7¾"	½ L	1 ea
*12663 ▶	White Plastic Coffee Carafe w/ Glass Liner, 7½ x 6½ x 8¾"	1 L	1 ea
*12664 ▶	White Plastic Coffee Carafe w/ Glass Liner, 7¾ x 6¾ x 10⅝"	1½ L	1 ea
*12665 ▶	Black Plastic Coffee Carafe w/ Glass Liner, 7 x 6 x 7¾"	½ L	1 ea
*12666 ▶	Black Plastic Coffee Carafe w/ Glass Liner, 7½ x 6½ x 8¾"	1 L	1 ea
*12667 ▶	Black Plastic Coffee Carafe w/ Glass Liner, 7¾ x 6¾ x 10⅝"	1½ L	1 ea



12662-12664



12665-12667

Item #	Description	Min Order
<b>REPLACEMENT PARTS</b>		
13065 ▶	Lid for Coffee Carafe, White 17 oz (½ L)	1 ea
13066 ▶	Lid for Coffee Carafe, White 34 oz (1 L)	1 ea
13067 ▶	Lid for Coffee Carafe, White 50 oz (1½ L)	1 ea
13068 ▶	Lid for Coffee Carafe, Black 17 oz (½ L)	1 ea
13069 ▶	Lid for Coffee Carafe, Black 34 oz (1 L)	1 ea
13070 ▶	Lid for Coffee Carafe, Black 50 oz (1½ L)	1 ea
12668 ▶	Decaf Lid for Coffee Carafe, White w/ Orange Thumb Press 17 oz (½ L)	1 ea
12669 ▶	Decaf Lid for Coffee Carafe, White w/ Orange Thumb Press 34 oz (1 L)	1 ea
12670 ▶	Decaf Lid for Coffee Carafe, White w/ Orange Thumb Press 50 oz (1½ L)	1 ea
12671 ▶	Decaf Lid for Coffee Carafe, Black w/ Orange Thumb Press 17 oz (½ L)	1 ea
12672 ▶	Decaf Lid for Coffee Carafe, Black w/ Orange Thumb Press 34 oz (1 L)	1 ea
12673 ▶	Decaf Lid for Coffee Carafe, Black w/ Orange Thumb Press 50 oz (1½ L)	1 ea



13067



12668



13070



12671



**NEW**

## COFFEE CREAMERS



Serve cream in style with this double-wall, stainless steel vacuum-insulated carafe. Designed to keep beverages cold for up to 3 hours, it's a sleek and reliable choice for breakfast buffets, coffee stations, or events.

- Flip-top lid with handle makes pouring and filling easy
- Dishwasher safe
- Conveniently packaged for cash & carry



12684



12685

Item #	Description	Capacity	Min Order
<b>COFFEE CREAMERS - STAINLESS STEEL (18-8)</b>			
12684 ▶	Coffee Creamer, 5¼ x 3½ x 8½"	24 oz	1 ea
12685 ▶	Coffee Creamer, 5¼ x 3½ x 11½"	34 oz	1 ea

**NEW**

## FLAVOR BANDS

Perfect for identifying options such as cream, skim, or non-dairy milks, they help create an organized and convenient self-serve experience for guests. Ideal for coffee stations, buffets, or events.

- Pack of 6 colored bands to identify: Skim, Cream, 2%, Half & Half, Almond, or Soy
- Individual black bands with white lettering to identify: Soy, Oat, Almond, Whole Milk and Half and Half

Item #	Description	Min Order
<b>FLAVOR BANDS</b>		
12687 ▶	Silicone Flavor Band, 6 bands per pack, 3½ x 3½ x ½"	1 ea
13072 ▶	"Soy Milk" Silicone Creamer Band, Black, 3¼ x 3¼ x ¾"	1 ea
13073 ▶	"Oat Milk" Silicone Creamer Band, Black, 3¼ x 3¼ x ¾"	1 ea
13074 ▶	"Almond Milk" Silicone Creamer Band, Black, 3¼ x 3¼ x ¾"	1 ea
13075 ▶	"Half & Half" Silicone Creamer Band, Black, 3¼ x 3¼ x ¾"	1 ea
13076 ▶	"Whole Milk" Silicone Creamer Band, Black, 3¼ x 3¼ x ¾"	1 ea

**NEW**

## COFFEE CONDIMENT ORGANIZERS WOOD



Keep your coffee and tea station organized with these durable wood condiment organizers. Perfect for breakfast buffets, cafés, or events, they neatly store sugars, creamers, stirrers, and more while offering a clean, practical presentation for any setting.

- Bamboo construction, natural or black painted
- Cup Holders are removable on the back and can just be used for other compartments
- Inside dimensions of just the cup holder: 4 1/8 x 3 5/8"
- Hand wash only



12690

Item #	Description	Min Order
<b>COFFEE CONDIMENT ORGANIZERS, WOOD</b>		
a. 12689 ▶	Coffee Condiment Organizer, Natural Bamboo (9) Compartments, (3) Cup/Lid Holders, 15 x 14 x 7 1/2"	1 ea
12690 ▶	Coffee Condiment Organizer, Black Painted Bamboo (9) Compartments, (3) Cup/Lid Holders, 15 x 14 x 7 1/2"	1 ea



a

**NEW**

## COFFEE CONDIMENT ORGANIZERS PLASTIC



Keep your coffee and tea station organized with these durable plastic condiment organizers. Perfect for breakfast buffets, cafés, or events, they neatly store sugars, creamers, stirrers, and more while offering a clean, practical presentation for any setting.

- BPA-free plastic construction
- Easy to clean, dishwasher safe



12638

Item #	Description	Min Order
<b>COFFEE CONDIMENT ORGANIZERS, PLASTIC</b>		
b. 12637 ▶	Coffee Condiment Organizer Black, 3 Cup Holders 14 x 10 1/2 x 7 1/8"	1 ea
12638 ▶	Coffee Condiment Organizer Black, 9 Compartments 11 3/4 x 7 3/4 x 4"	1 ea



b.

## GOOSENECK TEAPOT



GN10

Compact size is perfect for single service use

## BELL CREAMERS



2305

Classic design variety of sizes

## COFFEE SCOOPS



402

403

40401

Available in standard or long handled versions

## HOT BEVERAGE ACCESSORIES

Item #	Description	Capacity	Min Order
<b>GOOSENECK TEAPOT-STAINLESS STEEL</b>			
GN10	Teapot, 6¼ x 3 x 3¾"	10 oz	1 ea
<b>BELL CREAMERS-STAINLESS STEEL</b>			
2303	Creamer	3 oz	1 ea
2305	Creamer	5 oz	1 ea
2308	Creamer	8 oz	1 ea
2312	Creamer	12 oz	1 ea
<b>COFFEE SCOOPS-STAINLESS STEEL</b>			
401	Scoop	1 Tbsp	1 ea
402	Scoop	2 Tbsp	1 ea
403	Combo Scoop	1&2 Tbsp	1 ea
40400	8¾" Long Handle Scoop	½ Tbsp	1 ea
40401	8¾" Long Handle Scoop	1 Tbsp	1 ea
40402	9" Long Handle Scoop	2 Tbsp	1 ea
a. 12801 ▶	Long Handle Scoop	1 Tsp	1 ea
b. 12802 ▶	Long Handle Scoop	2 Tsp	1 ea
<b>COFFEE SHAKER SET-STAINLESS STEEL</b>			
*11054	3-Piece Coffee Shaker Set (Cinnamon, Cocoa & Nutmeg Shakers, Storage Caps, Chrome Plated Metal Rack)	(3) 6 oz	1 ea
*11055	4-Piece Coffee Shaker Set (Cinnamon, Cocoa, Nutmeg & Vanilla Shakers, Storage Caps, Chrome Plated Metal Rack)	(4) 6 oz	1 ea
<b>INDIVIDUAL COFFEE SHAKERS-STAINLESS STEEL &amp; PLASTIC</b>			
11050	Cinnamon Shaker w/Storage Cap	6 oz	1 ea
11051	Cocoa Shaker w/Storage Cap	6 oz	1 ea
11052	Nutmeg Shaker w/Storage Cap	6 oz	1 ea
11053	Vanilla Shaker w/Storage Cap	6 oz	1 ea

\*Available as Cash & Carry



## COFFEE SHAKER SET



6 oz Stainless Steel Shaker Set is designed to organize your gourmet coffee service. Each shaker features engraved lids.



11054



11055



11050

11051

11052

11053

## COFFEE SHAKERS



Individual Shakers: Cinnamon, Cocoa, Nutmeg and Vanilla. Plastic storage caps included.



## FROTHING CUP SERVERS



Upgrade your barista stand with our vintage and black frothing cups. Essential tool for frothing milk for lattes, cappuccinos, and more. These can also be used as a drinking vessel as well as for serving sides.

- Stainless steel base
- Available in 4 sizes in three different finishes
- Easy to clean, dishwasher safe



Item #	Description	Min Order
<b>FROTHING CUPS-STAINLESS STEEL W/VINTAGE FINISH, GOLD PVD HANDLE</b>		
12056	14 oz Frothing Cup, 3 $\frac{1}{8}$ x 3 $\frac{1}{4}$ "	1 ea
12057	18 oz Frothing Cup, 3 $\frac{3}{4}$ x 4 $\frac{1}{4}$ "	1 ea
12058	24 oz Frothing Cup, 4 $\frac{1}{8}$ x 4 $\frac{1}{4}$ "	1 ea
12059	36 oz Frothing Cup, 4 $\frac{1}{2}$ x 5 $\frac{3}{4}$ "	1 ea
<b>FROTHING CUPS-STAINLESS STEEL, BLACK NON-STICK PTFE FINISH</b>		
12060	14 oz Frothing Cup, 3 $\frac{1}{8}$ x 3 $\frac{1}{4}$ "	1 ea
a. 12061	18 oz Frothing Cup, 3 $\frac{3}{4}$ x 4 $\frac{1}{4}$ "	1 ea
12062	24 oz Frothing Cup, 4 $\frac{1}{8}$ x 4 $\frac{1}{4}$ "	1 ea
12063	36 oz Frothing Cup, 4 $\frac{1}{2}$ x 5 $\frac{3}{4}$ "	1 ea
<b>FROTHING CUPS-STAINLESS STEEL, MIRROR FINISH</b>		
*2014	14 oz Frothing Cup, 3 $\frac{1}{4}$ " dia x 3 $\frac{1}{2}$ "	1 ea
2024	24 oz Frothing Cup, 3 $\frac{3}{8}$ " dia x 4 $\frac{1}{4}$ "	1 ea
2036	36 oz Frothing Cup, 4 $\frac{1}{4}$ " dia x 5"	1 ea

\*Available as Cash & Carry

Ships from Gurnee, IL 60031

World Headquarters: 801 Lakeside Drive, Gurnee, Illinois 60031 | p: 847.855.9000 | f: 847.855.9012 | Customer service: 800.323.8321  
 info@tablecraft.com | www.tablecraft.com | facebook.com/tablecraft

