

# CHEF MASTER

P R O F E S S I O N A L



Butane Products . . . . .	2
Whipped Cream Products. . . . .	5
Salad Dryers. . . . .	6
Brushes . . . . .	7
Scrapers . . . . .	10
Fryer Items . . . . .	11
Timer. . . . .	12
Cutting, Shredding & Tenderizing . . . . .	12
Dispensers, Seasoning & Butter . . . . .	14
Can Opener . . . . .	15
Warming . . . . .	16
Utensils . . . . .	16
Knife Sharpeners. . . . .	18
Cast Iron . . . . .	19
Chips. . . . .	21
Rocks, Briquettes & Bar Items . . . . .	22
Signs & Markers . . . . .	23
Level Wedges & Fish Baskets . . . . .	25

## What Are These Symbols?



UL (Underwriters Laboratories) is a safety consulting and certification company. UL provides safety-related certification, validation, testing, inspection, auditing, advising and training services to a wide range of clients, including manufacturers, retailers, policymakers, regulators, service companies, and consumers.



Canadian Standards Association (CSA) is a safety consulting and certification company for the USA and Canada. CSA provides safety-related certification, validation, testing, inspection, auditing, advising and training services to a wide range of clients, including manufacturers, retailers, policymakers, regulators, service companies, and consumers.



NSF International is a global independent public health organization that provides standards development, product certification, testing, auditing, education and risk management services for public health and the environment.



ETL is a multinational inspection, product testing and certification company specializing in product safety testing.



The CE mark is a mandatory conformity marking for certain products sold within the European Economic Area (EEA). The CE marking is the manufacturer's declaration that the product ensures that the marked goods conform to standards.



**NEW**

**Butane Stove Cover**

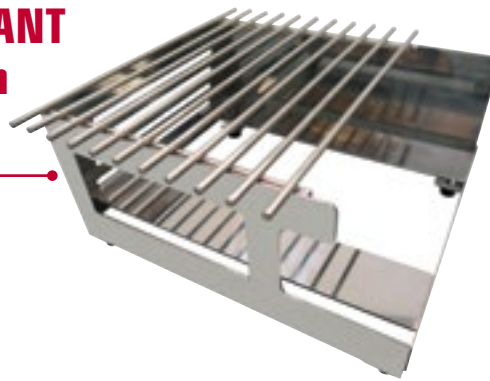
90217

- Creates a Unique and Elegant Presentation
- Protects Guests from the Open Flame
- Durable Stainless Steel

Case Pack: 2  
 Case Pack Weight: 24.4 lb  
 Case Pack Dimensions: 13 in x 15.7 in x 16.5 in  
 Case Cube: 1.96 cu ft



**UNIQUE & ELEGANT Presentation**



**Portable Butane Stove**

90027

- ETL Certified
- For Indoor Commercial Use
- High-Impact Carrying Case
- Automatic Piezo Electronic Ignition
- Wind Guard Reduces Loss of BTU/HR from Breeze or A/C
- In Line Regulator with Pressure-Sensing Shut-Off
- Boil to Simmer Heat Range
- Use Only Butane Marked BF1010 (Not Included)

Case Pack: 6  
 Case Pack Weight: 29 lb  
 Case Pack Dimensions: 13 in x 25 in x 14.2 in  
 Case Cube: 2.67 cu ft



**HIGH PERFORMANCE BUTANE STOVES**



**10,000 BTU Butane Stove**

90011

- ETL Certified
- For Indoor Commercial Use
- High-Impact Carrying Case
- Wind Guard Reduces Loss of BTU/HR from Breeze or A/C
- Automatic Piezo Electronic Ignition
- In Line Regulator with Pressure-Sensing Shut-Off
- Heat Transfer Plate Maintains High Heat Output
- Boil to Simmer Heat Range
- Use Only Butane Marked BF1010 (Not Included)

Case Pack: 6  
 Case Pack Weight: 28.7 lb  
 Case Pack Dimensions: 13 in x 25 in x 14.2 in  
 Case Cube: 2.67 cu ft



**15,000 BTU Butane Stove**

90019

- ETL Certified
- For Indoor Commercial Use
- High-Impact Carrying Case
- Automatic Piezo Electronic Ignition
- In Line Regulator with Pressure-Sensing Shut-Off
- Heat Transfer Plate Maintains High Heat Output
- Boil to Simmer Heat Range
- Use Only Butane Marked BF1010 (Not Included)

Case Pack: 6  
 Case Pack Weight: 29.9 lb  
 Case Pack Dimensions: 13 in x 25 in x 14.2 in  
 Case Cube: 2.67 cu ft

**Double Wind Guard**  
 Reduces Loss of BTU/HR from Breeze or A/C



**Butane Fuel**

40062

- UL Listed
- Use with Chef-Master Butane Stoves & Torches

Case Pack: 12  
 Case Pack Weight: 10 lb  
 Case Pack Dimensions: 11 in x 8.5 in x 8.5 in  
 Case Cube: 0.46 cu ft  
 \*HAZMAT



**Use with Chef-Master Butane Stoves & Torches**



Not Included





BUTANE PRODUCTS

WHIPPED CREAM PRODUCTS



**Single Refillable Butane Lighter**

11005

- 144 Pack
- Child Resistant
- Perfect for Barbecues, Candles, Fireplaces, Gas Stoves

Case Pack: 144  
Case Pack Weight: 30 lb  
Case Pack Dimensions: 18.1 in x 13.8 in x 13 in  
Case Cube: 1.88 cu ft  
\*HAZMAT

11005B

Case Pack: 24  
Case Pack Weight: 4 lb  
Case Pack Dimensions: 6.1 in x 12.8 in x 6.8 in  
Case Cube: 0.31 cu ft  
\*HAZMAT

**Two-Pack Refillable Butane Lighter**

11006

- 72 x 2 Packs
- Child Resistant
- Perfect for Barbecues, Candles, Fireplaces, Gas Stoves

Case Pack: 72  
Case Pack Weight: 25 lb  
Case Pack Dimensions: 18.1 in x 13.8 in x 13 in  
Case Cube: 1.88 cu ft  
\*HAZMAT

11006B

Case Pack: 12  
Case Pack Weight: 4.4 lb  
Case Pack Dimensions: 9.1 in x 13.2 in x 6.43 in  
Case Cube: 0.30 cu ft  
\*HAZMAT



**1 Pint (0.5 L) Stainless Steel Whipped Cream Dispenser**

90062

Case Pack: 6  
Case Pack Weight: 11 lb  
Case Pack Dimensions: 12.2 in x 8.1 in x 11.8 in  
Case Cube: 0.67 cu ft

- Easy to Operate
- NSF® Certified
- Dishwasher Safe
- For Professional Use Only
- Limited Lifetime Warranty
- Use only Chef-Master Whipped Cream Chargers 90060/90061 (Sold Separately)

**2 Pint (1.0 L) Stainless Steel Whipped Cream Dispenser**

90063

Case Pack: 6  
Case Pack Weight: 14.1 lb  
Case Pack Dimensions: 12.5 in x 8.4 in x 13.6 in  
Case Cube: 0.82 cu ft



**Premium Butane Torch**

90022

- Large, Powerful High Performance
- Power: 4,873 BTUs (1,428 W)
- Heats Up to 2,192 °F (1,200 °C)
- Push Button/Auto Ignition
- Adjustable Flame Control Knob
- Equipped with Anti-Flare Device
- Burns Up to 3 Hours with Standard 8 oz Chef-Master #40062 Butane Fuel Canister (Sold Separately)

Case Pack: 6  
Case Pack Weight: 6 lb  
Case Pack Dimensions: 15.8 in x 18.6 in x 16.6 in  
Case Cube: 2.81 cu ft



**Chef's Torch**

90014

- High Performance
- Equipped with Anti-Flare Device
- Push Button/Auto Ignition
- Burns up to 3 Hours with Standard 8 oz Chef-Master #40062 Butane Fuel Canister (Sold Separately)

Case Pack: 12  
Case Pack Weight: 6 lb  
Case Pack Dimensions: 11 in x 8.5 in x 7.5 in  
Case Cube: 0.42 cu ft



**Charger 10 Pack**

90060  
Case Pack: 36 x 10 Packs  
Case Pack Weight: 25 lb  
Case Pack Dimensions: 9.5 in x 7.6 in x 8.5 in  
Case Cube: 0.35 cu ft



**Charger 24 Pack**

90061  
Case Pack: 25 x 24 Packs  
Case Pack Weight: 50 lb  
Case Pack Dimensions: 11.8 in x 6.5 in x 3.6 in  
Case Cube: 0.63 cu ft



**Whipped Cream Gasket Pack**

90224  
• For Use with Chef-Master and Most Whipped Cream Dispensers in the Market  
Case Pack: 1



**Whipped Cream Dispenser Replacement Parts**

90225  
• Includes: 3 Tips, 2 Gaskets, Cleaning Brush with Nylon Bristles and Aluminum Charger Holder  
• For Use with Chef-Master and Most Whipped Cream Dispensers in the Market  
Case Pack: 1



**1 Pint (0.5 L) Whipped Cream Dispenser**

90068

Case Pack: 6  
Case Pack Weight: 10.7 lb  
Case Pack Dimensions: 12.2 in x 8.2 in x 11.8 in  
Case Cube: 0.68 cu ft

- Easy to Operate
- Eco-Friendly
- Economically Priced with Professional Results
- Use only Chef-Master Whipped Cream Chargers 90060/90061 (Sold Separately)

**2 Pint (1 L) Whipped Cream Dispenser**

90069

Case Pack: 6  
Case Pack Weight: 13.54 lb  
Case Pack Dimensions: 12.20 in x 8.27 in x 13.58 in  
Case Cube: 0.79 cu ft

## PREMIUM SALAD DRYER

SALAD DRYERS



### Premium 5 Gallon Salad Dryer

90005

- Built-In Brake Extends Life of Gears
- ETL Certified to ANSI/NSF STD 169
- Sanitary Sealed Gearbox
- Convenient Side Handles
- Large 5 Gallon Capacity Accommodates Approximately 5-6 Heads of Lettuce

Case Pack: 1  
Case Pack Weight: 14.3 lb  
Case Pack Dimensions: 17.3 in x 17.3 in x 24 in  
Case Cube: 4.12 cu ft

### Premium 2.5 Gallon Salad Dryer

90012

Case Pack: 1  
Case Pack Weight: 9 lb  
Case Pack Dimensions: 14.8 in x 14.8 in x 15.8 in  
Case Cube: 1.98 cu ft

## 5-GALLON SALAD DRYER



### 5 Gallon Salad Dryer

90008

- Convenient Side Handles for Safe & Easy Transport
- Heavy Duty, FDA Approved Plastic is Durable & Safe
- Large 5 Gallon Capacity Accommodates Approximately 5-6 Heads of Lettuce

Case Pack: 1  
Case Pack Weight: 10.4 lb  
Case Pack Dimensions: 17.7 in x 17.7 in x 17.1 in  
Case Cube: 3.11 cu ft



### Replacement Gears

90020

- Use only Chef-Master 5 Gallon Salad Dryer (90008)

Case Pack: 1  
Case Pack Weight: 0.4 lb  
Case Pack Dimensions: 3 in x 4 in x 6 in  
Case Cube: 0.04 cu ft



BRUSHES

NEW

### 9.8 IN Cast Iron Scrub Brush

90058

- Cleans Every Inch of Your Cookware Without Damaging the Surface
- Thick Nylon Bristles with Scraper Removes Residue Easily
- Comfort Grip Handle

Case Pack: 6  
Case Pack Weight: 2.5 lb  
Case Pack Dimensions: 7.3 in x 13.4 in x 3.9 in  
Case Cube: 0.22 cu ft



### 17 IN Char-Broiler Brush

90051

- Commercial Grade Stainless Steel Bristles & Scraper
- Dual-Handle Provides Leverage to Remove Tough Residue Easily

Case Pack: 6  
Case Pack Weight: 8.8 lb  
Case Pack Dimensions: 17.8 in x 11.9 in x 6.9 in  
Case Cube: 0.85 cu ft



### 10.5 IN Handheld Grill Brush

90044

- Durable Handle
- Stainless Steel Bristles
- Stainless Steel Scraper Blade

Case Pack: 12  
Case Pack Weight: 6 lb  
Case Pack Dimensions: 9.9 in x 16.9 in x 4.3 in  
Case Cube: 0.42 cu ft

**4 Ft. Dual-Sided Broiler Brush**

90223

- Long Stainless Steel Bristles
- Coarse Steel Wire Bristles for Heavy Duty Use
- Treated Wooden Head and Handle
- Heavy Duty Steel Wire Cleans Burnt Grime Easily Without Damaging Equipment
- 4 ft. Handle
- 7.75 in Double-Sided Head

Case Pack: 4

Case Pack Weight: 15 lb  
Case Pack Dimensions: 10.4 in x 42.9 in x 4.5 in  
Case Cube: 1.2 cu ft



**30 IN Classic Broiler Brush**

90042

- 30 in Handle
- 8 in Head
- Stainless Steel Bristles
- Stainless Steel Scraper Blade
- Double Crimped Collar

Case Pack: 6

Case Pack Weight: 12 lb  
Case Pack Dimensions: 8.3 in x 33.7 in x 9.7 in  
Case Cube: 1.96 cu ft



**40 IN Classic Pizza Oven Brush**

90041

- 40 in Handle
- 10 in Head
- Brass Bristles
- Stainless Steel Scraper Blade
- Double Crimped Collar

Case Pack: 6

Case Pack Weight: 13 lb  
Case Pack Dimensions: 6.7 in x 43.5 in x 9.1 in  
Case Cube: 2.51 cu ft



**4 Ft. Heavy Duty Grill Brush**

90043DH

- Long Stainless Steel Bristles
- Treated Wooden Head and Handle
- Heavy Duty Steel Wire Cleans Burnt Grime Easily Without Damaging Equipment
- 4 ft. Handle
- 7.75 in Double-Sided Head

Case Pack: 4

Case Pack Weight: 17 lb  
Case Pack Dimensions: 15.8 in x 51.2 in x 9.1 in  
Case Cube: 4.22 cu ft



**Pizza Oven Brush Replacement Head**

90046

- 10 in Head
- Brass Bristles
- Stainless Steel Scraper Blade

Case Pack: 12

Case Pack Weight: 14 lb  
Case Pack Dimensions: 12 in x 9.8 in x 8 in  
Case Cube: 0.59 cu ft



**9.5 IN Panini Grill Brush**

90052

- Stainless Steel Bristles and Scrapers
- Features Three Scrapers Designed to Clean Between the Ribs and Flat Surfaces
- Works with Most Commercial Panini Grills

Case Pack: 12

Case Weight: 6.7 lb  
Case Dimensions: 12.8 in x 7.9 in x 6.3 in  
Case Cube: 0.37 cu ft



**5.8 IN All Purpose Brush**

90047

Case Pack: 12  
Case Weight: 6.7 lb  
Case Dimensions: 12.8 in x 7.9 in x 6.3 in  
Case Cube: 0.37 cu ft



**8 IN Pot Brush**

90048

Case Pack: 12  
Case Weight: 8 lb  
Case Dimensions: 13.4 in x 9.9 in x 6.9 in  
Case Cube: 0.53 cu ft



**Chainmail Pot Scrubber**

90236

- Perfect for Stainless and Cast Iron Cookware
- Stainless Steel Sinks, Basins, Tables and Commercial Surfaces
- Durable Stainless Steel Rings Remove Stuck on Food

Case Pack: 4

Case Weight: 1.23 lb  
Case Dimensions: 9.57 in x 4.09 in x 6.46 in  
Case Cube: 0.146 cu ft



**20 IN High Heat Pot Brush**

90049

- Withstands Heat up to 425 °F (218 °C)

Case Pack: 6  
Case Weight: 7.1 lb  
Case Dimensions: 21.3 in x 7.9 in x 6.1 in  
Case Cube: 0.59 cu ft



**30 IN High Heat Fryer Brush**

90054

- Cleans Hard to Reach Areas
- Withstands High Heat Temperatures for Cleaning Hot or Cold Fryers
- Brass Bristles

Case Pack: 12  
Case Pack Weight: 6.1 lb  
Case Pack Dimensions: 5.6 in x 34.4 in x 5.9 in  
Case Cube: 0.66 cu ft



**26.5 IN High Heat Fryer Brush**

90053

- Features an "L" Shape to Clean Hard to Reach Areas
- Withstands High Heat Temperatures for Cleaning Hot or Cold Fryers
- Brass Bristles

Case Pack: 12  
Case Pack Weight: 6.8 lb  
Case Pack Dimensions: 6.1 in x 32.5 in x 5.3 in  
Case Cube: 0.61 cu ft

**Dual-Handle Griddle Scraper**

90220

**NEW**

- Ergonomic Comfort Grip Handle
- Knob Located on Handle for Added Leverage to Minimize Fatigue
- 23 in Handle Keeps You Away from Heat and Improves Leverage
- Lightweight Aluminum Construction
- Replacement Blades are Made of Rust Resistant 430 Grade Stainless Steel
- Replacement Blade 90003HD

Case Pack: 6  
 Case Pack Weight: 7.8 lb  
 Case Pack Dimensions: 24 in x 10.7 in x 4.1 in  
 Case Cube: .62 cu ft



**Premium Griddle Scraper**

90002

- ETL Certified to ANSI/NSF STD 2
- Engineered to Maximize Production and Minimize Fatigue
- Replacement Blades are Made of Rust Resistant 430 Grade Stainless Steel
- Lightweight 18 in Aluminum Frame Construction
- Replacement Blade 90003HD

Case Pack: 4  
 Case Pack Weight: 9 lb  
 Case Pack Dimensions: 20.7 in x 13.8 in x 14.5 in  
 Case Cube: 2.29 cu ft



**Griddle Scraper**

90018

- Long 15.5 in Handle Keeps You Away from the Heat
- Handle Designed for Comfort
- Lightweight Aluminum Construction
- Replacement Blades are Made of Rust Resistant 430 Grade Stainless Steel
- Replacement Blade 90003HD

Case Pack: 6  
 Case Weight: 4.8 lb  
 Case Dimensions: 6.7 in x 16.7 in x 4.3 in  
 Case Cube: 0.27 cu ft



**Griddle Scraper Replacement Blades**

90003HD

- 5.5 in Sharpened Stainless Steel Blade Cleans Griddle Evenly, Consistently and Thoroughly
- Replacement Blades are Made of Rust Resistant 430 Grade Stainless Steel
- 1.2 mm Thick
- Double Bevelled Edge Designed for Standard and Chrome Griddles
- Reversible - Twice the Life!
- Fits 90002, 90018 and 90220 Scrapers

Case Pack: 6  
 Case Pack Weight: 1 lb  
 Case Pack Dimensions: 6.5 in x 2.5 in x 0.4 in  
 Case Cube: 0.03 cu ft

**Fryer Splash Guard**

90059

**NEW**

- Universal Design Fits Most Fryers on the Left or Right Side
- Prevents Cross Contamination
- Keeps Grease Off Equipment

Case Pack: 2  
 Case Pack Weight: 10.3 lb  
 Case Pack Dimensions: 22.4 in x 21.1 in x 3.5 in  
 Case Cube: 0.97 cu ft



**NEW**

**Fryer Filter Stand with Folding Arms**

90073

- Collapses for Easy Storing
- Durable Stainless Steel

Case Pack: 12  
 Case Pack Weight: 13.8 lb  
 Case Pack Dimensions: 10.2 in x 19.9 in x 15.2 in  
 Case Cube: 1.79 cu ft



**NEW**

**Fryer Cleanout Rod**

90055

- Cleans Debris and Breaks Up Hardened Oil from the Drain Line
- Durable Comfort Handle and Commercial Stainless Steel Construction
- 30 in Rod Works with Various Fryers

Case Pack: 6  
 Case Pack Weight: 3.5 lb  
 Case Pack Dimensions: 9.8 in x 27 in x 3.4 in  
 Case Cube: 0.51 cu ft

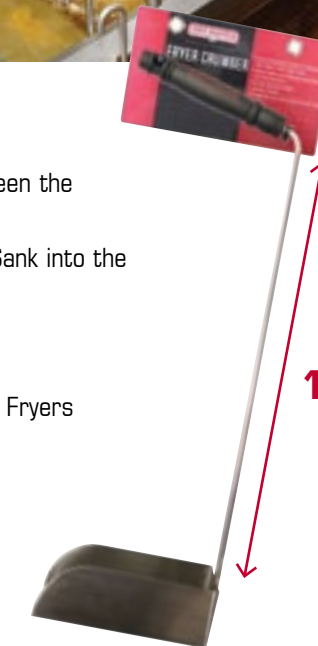


**Fryer Crumber**

90222

- Scoop Designed to Easily Fit Between the Tubes in Your Fryer Tank
- Clears Debris and Sediment that Sank into the Cold Zone
- Durable Stainless Steel
- Comfort Handle
- Compatible with Most Commercial Fryers

Case Pack: 6  
 Case Pack Weight: 7 lb  
 Case Pack Dimensions: 8.3 in x 24.6 in x 7.5 in  
 Case Cube: .89 cu ft





**NEW**

**4-Channel Timer**

90218

- 4 Timer Settings for Different Foods at the Same Time
- Adjust Volume Settings from Low to High for Kitchens Close to Customers or Noisy Environments
- Large LED Display for Easy Viewing
- 9-Hour Countdown for Longer Cook Times
- Battery Included (9 Volt)
- Water-Resistant
- Non-Skid Rubber Feet

Case Pack: 2  
 Case Pack Weight: 1.1 lb  
 Case Pack Dimensions: 8.7 in x 7.9 in x 7.7 in\*  
 Case Cube: .3 cu ft  
\*Estimated dimensions



**Barbecue Grilling Claws**

40209CM

- The Quick and Easy Way to Shred Pork, Beef & Chicken
- Firmly Holds Meats While Lifting or Carving
- Soft Comfortable Rubber Grip for Easy Handling

Case Pack: 4  
 Case Pack Dimensions: 10.2 in x 10.8 in x 6.7 in  
 Case Cube: 0.44 cu ft

**Carving Board**

90072

- Curved Center Collects Juices to Help Keep Meat and Poultry Moist
- Keeps Juice from Running Off Board and Making a Mess
- Non-Slip Rubber Feet for a Secure Cutting Surface
- Dimensions: 17.9 in x 14 in (45.4 cm x 35.6 cm)

Case Pack: 4  
 Case Pack Weight: 18.8 lb  
 Case Pack Dimensions: 14.3 in x 18.4 in x 5.4 in  
 Case Cube: 0.83 cu ft



**Citrus Wedger**

90023

- Makes Perfectly Wedged Lemons and Limes for Drinks and Garnishes
- Produces 8 or 16 Wedges at a Time
- Safer to Use — Eliminates Knife Accidents
- Saves Time with One Easy Motion
- Non-Skid Rubber Feet Keeps Wedger in Place

Case Pack: 4  
 Case Pack Weight: 10.3 lb  
 Case Pack Dimensions: 9.6 in x 18.3 in x 16.3 in  
 Case Cube: 1.7 cu ft

**VISIT**  
[CHEF-MASTER.COM/PRODUCT/CITRUS-WEDGER](http://CHEF-MASTER.COM/PRODUCT/CITRUS-WEDGER)  
**TO SEE IT IN ACTION!**

**Meat Tenderizer**

90009

- Make the Toughest Cut of Meat into a Juicy, Flavorful Masterpiece
- 48 Stainless Steel Razor Sharp Blades Penetrate Any Cut of Meat with Ease
- Tenderizing Meat, Poultry or Fish Prior to Marinating will Allow Spices & Flavors to be Absorbed Quickly & Deeply
- Easy to Use – No Assembly Required
- ETL Certified to ANSI/NSF STD 169

Case Pack: 6  
 Case Pack Weight: 8 lb  
 Case Pack Dimensions: 17 in x 6.3 in x 8 in  
 Case Cube: 0.49 cu ft



**Pro Chopper**

90017

- Easily Cut, Dice, Chop and Mince
- Great for Salad, Herbs, Veggies, Dough and More
- Use in a Bowl or on a Cutting Board
- Double Stainless Steel Blades
- Natural Rocking Motion Makes Chopping Quick and Easy
- Commercial Dishwasher Safe

Case Pack: 6  
 Case Pack Weight: 3 lb  
 Case Pack Dimensions: 12.8 in x 8.3 in x 5.5 in  
 Case Cube: 0.34 cu ft





**Squeeze Bottles**

- Designed for Trouble-Free Dispensing of all Condiments
- Wide Mouth Design for Easy Filling
- FDA Approved Plastics
- Dishwasher Safe
- BPA Free



**a. 12 oz. Capacity**  
90207

Case Pack: 12  
Case Pack Weight: 11.7 lb  
Case Pack Dimensions:  
9.8 in x 24 in x 20.9 in  
Case Cube: 2.85 cu ft



**b. 16 oz. Capacity**  
90208

Case Pack: 8  
Case Pack Weight: 9.4 lb  
Case Pack Dimensions:  
9.8 in x 24 in x 17.3 in  
Case Cube: 2.37 cu ft



**c. 24 oz. Capacity**  
90209

Case Pack: 8  
Case Pack Weight: 1 lb  
Case Pack Dimensions:  
9.8 in x 24 in x 22.4 in  
Case Cube: 3.07 cu ft



**d. 32 oz. Capacity**  
90210

Case Pack: 6  
Case Pack Weight: 10.1 lb  
Case Pack Dimensions:  
20.5 in x 20.5 in x 12 in  
Case Cube: 2.91 cu ft

**Silicone Brush Basting Bottle**

**NEW**

40030CM

- Bristles are Stain- and Heat-Resistant
- Fill with Sauce or Marinade, Then Squeeze Bottle
- Reduces the Risk of Food Borne Illness Caused by Cross Contamination (Double Dipping)

Case Pack: 6  
Case Pack Weight: 2 lb  
Case Pack Dimensions: 7.1 in x 13.6 in x 8.1 in  
Case Cube: .45 cu ft



**NEW**

**Stainless Steel Marinade Injector**

40098CM

- Large 2 oz Barrel is Easy to Fill and Clean
- Needles Pierce the Toughest Meats
- Stainless Steel Injector Won't Clog or Break Easily
- Handle is Easy to Grip for Greater Pressure Control

Case Pack: 4 • Case Pack Weight: 2.9 lb  
Case Pack Dimensions: 6.5 in x 11.3 in x 6.9 in  
Case Cube: .3 cu ft



**Seasoning/Marinade Injector**

40100CM

- Moistens All Cuts of Meat
- Perfect for Roasts, Steaks, Poultry and Pork
- Extra Large 2 Ounce Capacity
- Commercial Grade Stainless Steel Needle

Case Pack: 6  
Case Weight: 3 lb  
Case Dimensions:  
12.8 in x 8.3 in x 5.5 in  
Case Cube: 0.34 cu ft



**Basting Mop**

02103Y

- Cotton Mop Head is Ideal for Applying Basting Mixtures or Barbecue Sauces
- Large Hardwood Handle
- Leather Hanging Strap

Case Pack: 12  
Case Weight: 2.9 lb  
Case Dimensions:  
5.5 in x 16.3 in x 5.1 in  
Case Cube: 0.24 cu ft

**Butter Roller**

90021

- Spreads Butter Quickly and Evenly
- Prevents Messy Spills and Flare-Ups Around the Grill or Griddle
- Easy to Clean
- Sturdy Stainless Steel Construction

Case Pack: 4  
Case Pack Weight: 74 lb  
Case Pack Dimensions: 7.5 in x 15 in x 13.4 in  
Case Cube: 0.87 cu ft



**NEW**

**Heavy Duty Commercial Can Opener**

90056

- Opens #10 Cans Fast and Easily
- Oversized, Easy to Grip Knob
- Durable Metal Construction
- Sharp Cutting Discs
- Soft and Comfortable Anti-Slip, Finger Grip Handles
- Easy to Clean

Case Pack: 6  
Case Pack Weight: 5.9 lb  
Case Pack Dimensions:  
9.8 in x 14.8 in x 5.6 in  
Case Cube: 0.47 cu ft



**NEW**

**Commercial Can Opener**

90226

- Durable Metal Construction
- Sharp Cutting Discs
- Soft and Comfortable Anti-Slip, Finger Grip Handles
- Easy to Clean

Case Pack: 6  
Case Pack Weight: 4.1 lb  
Case Pack Dimensions:  
5.5 in x 9.7 in x 5.8 in  
Case Cube: 0.18 cu ft

**Heat Lamp**

90050

**BENEFITS:**

- Large 12 in x 20 in Area Keeps Food Warm & Ready-to-Serve
- Adjustable Stand Prevents Food from Over-Drying
- Power Switch Safely Located Away from Hot Bulbs
- Non-Slip Feet - Lamp Stays Put & Won't Move
- 3-Piece Construction for Easy Assembly & Storage

**FEATURES:**

- UL-EPH Safety & Sanitation Tested & Listed
- Includes Two 250 Watt Shatterproof Bulb
- Lamp Adjusts from 20 in to 29 in
- Aluminum Alloy Base and Shades

Case Pack: 1

Case Pack Weight: 7.7 lb

Case Pack Dimensions:

15.4 in x 20.9 in x 12.8 in

Case Cube: 2.38



**High Heat Spoons**

**Features:**

- Won't Deform
- Heat-Resistant up to 525°F / 274°C
- Stain-Resistant
- FDA Approved
- Raised Bumps Prop the Blade Up to Keep Utensil and Surface Clean



**10 in. High Heat Spoon**

90227

Case Pack: 12

Case Pack Weight: 3.1 lb

Case Pack Dimensions:

4.7 in x 14.4 in x 10 in

Case Cube: 0.39 cu ft

**13.4 in. High Heat Spoon**

90228

Case Pack: 12

Case Pack Weight: 4.8 lb

Case Pack Dimensions:

8 in x 17.5 in x 6.7 in

Case Cube: 0.55 cu ft

**16.5 in. High Heat Spoon**

90229

Case Pack: 12

Case Pack Weight: 5.5 lb

Case Pack Dimensions:

8 in x 20.7 in x 6.7 in

Case Cube: 0.65 cu ft



**High Heat Spatula**

**Features:**

- Won't Deform
- Heat-Resistant up to 525°F / 274°C
- Stain-Resistant
- FDA Approved
- Raised Bumps Prop the Blade Up to Keep Utensil and Surface Clean



**10 in. High Heat Spatula**

90212

Case Pack: 12

Case Pack Weight: 3 lb

Case Pack Dimensions:

4.5 in x 14.3 in x 9.2 in

Case Cube: 0.34 cu ft

**13.5 in. High Heat Spatula**

90213

Case Pack: 12

Case Pack Weight: 4.4 lb

Case Pack Dimensions:

4.9 in x 17.5 in x 9.3 in

Case Cube: 0.46 cu ft

**16.5 in. High Heat Spatula**

90214

Case Pack: 12

Case Pack Weight: 5.1 lb

Case Pack Dimensions:

4.7 in x 20.9 in x 9.5 in

Case Cube: 0.54 cu ft



**High Heat Turner**

90211

- Heat-Resistant up to 475°F / 246°C
- Ideal for Non-Stick Cookware
- FDA Approved Glass Nylon Material
- Cleans Easily

Case Pack: 12

Case Pack Weight: 2.5 lb

Case Pack Dimensions: 6.8 in x 13.8 in x 4.9 in

Case Cube: 0.27 cu ft





**Knife Sharpener**

90015GDCM

- Commercial Grade Carbide Sharpener
- Reversible Carbide Doubles the Life of the Product
- Extra Wide Safety Sheath Protects Your Hands

Case Pack: 12

Case Pack Weight: 3.2 lb

Case Pack Dimensions: 13.2 in x 9.5 in x 8.9 in

Case Cube: 0.60 cu ft



**Private Label Knife Sharpener**

90015GDPLA

- Customized with Your Logo and Company Information
- Commercial Grade Carbide Sharpener
- Reversible Carbide Doubles the Life of the Product
- Extra Wide Safety Sheath Protects Your Hands

Case Pack: 144

Case Pack Weight: 39 lb

Case Pack Dimensions: 28 in x 14 in x 21 in

Case Cube: 4.76 cu ft



**Knife Sharpener**

•90231

- Heavy Duty Commercial Grade Tungsten Carbide Sharpener
- Compact Design Fits Anywhere for Easy Storage
- Easy Grip Design Keeps Cutting Edge Away from Fingers



**Dual Stage Knife Sharpener**

•90232

- Heavy Duty Commercial Grade Tungsten Carbide Sharpener and Fine Ceramic Rods for Honing
- Compact Design Fits Anywhere for Easy Storage
- Easy Grip Design Keeps Cutting Edge Away from Fingers

**Pre-Seasoned Reversible Cast Iron Griddle**

90202

- Grill Steaks, Burgers & More on the Searing Side, or Flip to Cook Pancakes, Eggs, & More
- Raised Edges Catch Grease and Prevent Flare-Ups
- Commercial Grade Cast Iron Distributes Heat Evenly to Cooking Surfaces
- Dimensions: 16.8 in L x 9.5 in W x 0.8 in H

Case Pack: 4

Case Pack Weight: 37.9 lb

Case Pack Dimensions: 10.4 in x 17.1 in x 4.1 in

Case Cube: 0.43 cu ft



Burger Press is NOT included



**Pre-Seasoned Cast Iron Fajita Platter Set**

- Includes: Cast Iron Platter with Handle, Durable Wooden Base Server, Protective Hot Handle Holder
- Ideal for Serving Sizzling Hot Beef, Chicken, Pork and Vegetables



**Pre-Seasoned Cast Iron Ribbed Fajita Platter Set**

90201

- Ribbed Bottom Sears Meats While Creating Authentic Grill Marks
- Distributes Heat Evenly to Cooking Surface

Case Pack: 4

Case Pack Weight: 17 lb

Case Pack Dimensions: 9.1 in x 17.2 in x 8. in

Case Cube: 0.79 cu ft



**Pre-Seasoned Cast Iron Fajita Platter Set**

90200

- Ready to Use
- Commercial Grade Cast Iron Distributes Heat Evenly to Cooking Surface
- Perfect for Cooking Healthy & Nutritious Foods

Case Pack: 4

Case Pack Weight: 17 lb

Case Pack Dimensions: 9.1 in x 17.2 in x 8. in

Case Cube: 0.79 cu ft

CAST IRON



**10.25 in Pre-Seasoned Cast Iron Skillet**

90203

Case Pack: 4  
Case Pack Weight: 22 lb  
Case Pack Dimensions: 11.8 in x 18.2 in x 5.9 in  
Case Cube: 0.73 cu ft



**12 in Pre-Seasoned Cast Iron Skillet**

90204

Case Pack: 4  
Case Pack Weight: 31 lb  
Case Pack Dimensions: 13.7 in x 19.2 in x 5.6 in  
Case Cube: 0.85 cu ft



**15 in Pre-Seasoned Cast Iron Skillet**

90205

Case Pack: 2  
Case Pack Weight: 23 lb  
Case Pack Dimensions: 16.5 in x 22.6 in x 3.9 in  
Case Cube: 0.83 cu ft

**Features:**

- Excellent for Use on Stovetops and in the Oven
- Commercial Grade Cast Iron Distributes Heat Evenly to Cooking Surface



**Mini Cast Iron Hibachi Grill**

90206

- Includes a Durable, Pre-Seasoned Cast Iron Hibachi Grill with Wooden Base
- Great for Cooking Appetizers and Desserts
- Guests will have a Memorable Experience Cooking Their Own Food in Style
- Small Enough to Easily Transport Right to the Table
- Designed to Use with Chafing Fuel (Not Included)

Case Pack: 6  
Case Pack Weight: 15.8 lb  
Case Pack Dimensions: 8.7 in x 12.2 in x 6.8 in  
Case Cube: 0.42 cu ft



**9.8" Cast Iron Scrub Brush**

Perfect for All Chef Master Cast Iron Products

See Page 7



**Smoking Chips Features**

- 100% Natural Flavored Smoking Chips
- Simple to Use: Soak, Smoke and Enjoy

Case Pack: 6  
Case Pack Weight: 5.5 lb  
Case Pack Dimensions: 10.6 in x 9.3 in x 11.8 in  
Case Cube: 0.68 cu ft



**Old Barrel Red Wine**  
05040BC



**Old Barrel White Wine**  
05041BC



**Old Barrel Whiskey**  
05042BC

CHIPS

**Smoking Chips Features**

- 100% Natural Flavored Smoking Chips
- Simple to Use: Soak, Smoke and Enjoy

Case Pack: 4  
Case Pack Weight: 8 lb  
Case Pack Dimensions: 13.8 in x 11.3 in x 7 in  
Case Cube: 0.64 cu ft



**Hickory Smoking Chips**  
05011Y



**Mesquite Smoking Chips**  
05010Y



**Pecan Smoking Chips**  
05019Y



**Cherry Smoking Chips**  
05017Y



**Apple Smoking Chips**  
05012Y



**Gas Grill Ceramic Briquettes**

05004CM

- Reduce Flare-Ups
- Improves Heat Distribution
- Self-Cleaning

Case Pack: 6  
 Case Pack Weight: 37 lb  
 Case Pack Dimensions: 17.5 in x 10 in x 7.5 in  
 Case Cube: 0.75 cu ft



**Natural Lava Rock**

05002

- Replacement Lava Rock
- Works in All Gas Grills
- Covers Approximately 300 sq in
- 300 Per Pallet

Case Pack: 1  
 Case Pack Weight: 7 lb  
 Case Pack Dimensions: 15.5 in x 11 in x 2 in  
 Case Cube: 0.20 cu ft



**NEW**

**Beer Tap Plugs Features**

- Fits a Variety of Taps Keeping Them Clean and Sanitary
- Prevents Fruit Flies and Dust Contamination
- Removes Yeast and Buildup for Better Tasting Beer

**Beer Tap Plugs (6 Count)**

90216

Case Pack: 6  
 Case Pack Weight: 1.2 lb  
 Case Pack Dimensions: 9.1 in x 5.5 in x 4.1 in  
 Case Cube: 0.12 cu ft

**Beer Tap Plugs (50 Count)**

90219

Case Pack: 2  
 Case Pack Weight: 1 lb  
 Case Pack Dimensions: 4.3 in x 10 in x 4.4 in  
 Case Cube: 0.11 cu ft

**Bar Charger**

90029

- An Easy and Convenient Way Customers Can Recharge Devices
- Includes Six USB Charging Ports and a Five Foot Cord
- Single Power Supply Eliminates Numerous Plugs
- Three Compartments for Storing Napkins, Straws and Stir Sticks
- 120 Volts / 60 HZ

Case Pack: 4  
 Case Pack Weight: 7.4 lb  
 Case Pack Dimensions: 8.7 in x 12.4 in x 13.1 in  
 Case Cube: 0.82 cu ft



**Reversible Marker Boards**

**Features:**

- Sign Dimensions: 24 in x 36 in or 18 in x 24 in
- One Side Black, One Side White
- Weather-Resistant Hardware for Indoor & Outdoor Usage
- 5 Rainproof Markers Included
- Heavy-Duty Construction Provides Durability
- Pre-Attached Hooks Allow for Vertical or Horizontal Hanging
- No Assembly Required



**18 in x 24 in Marker Board**

90030

Case Pack: 2  
 Case Weight: 9 lb  
 Case Dimensions: 18.5 in x 2.8 in x 24 in  
 Case Cube: 0.70 cu ft



**24 in x 36 in Marker Board**

90031

Case Pack: 2  
 Case Weight: 16 lb  
 Case Dimensions: 24.5 in x 2.8 in x 36 in  
 Case Cube: 1.40 cu ft

**Wood Frame Marker Board & Markers**

**Features:**

- Board Dimensions: 24 in x 36 in or 18 in x 24 in
- Heavy-Duty Construction
- Pre-Attached Hooks Allow for Vertical or Horizontal Hanging
- Durable 1 in Wood Frame
- Uses 90032 Markers (Sold Separately - See Below)

**24 in x 36 in Marker Board**

90071

Case Pack: 2  
 Case Weight: 11.4 lb  
 Case Dimensions: 2.6 in x 24.8 in x 36.6 in  
 Case Cube: 1.35 cu ft

**5 Rainproof Markers**

90032

- Smudgeproof/Rainproof
- 5 Vibrant, Fluorescent Colors
- Easily Wipes Clean with a Damp Paper Towel
- For Use on Write-On Boards, Glass or Windows

Case Pack: 4  
 Case Pack Weight: 1.1 lb  
 Case Pack Dimensions: 6.8 in x 4.3 in x 4.3 in  
 Case Cube: 0.07 cu ft





**“A” Frame Sign**

90034

- Two-Sided Aluminum Frame
- Sturdy and Weather-Resistant
- Adjustable Non-Skid Feet
- Uses 90032 Markers (Sold Separately)

Case Pack: 1  
 Case Pack Weight: 17.9 lb  
 Case Pack Dimensions: 44.9 in x 26.8 in x 3.8 in  
 Case Cube: 2.50 cu ft

**Hostess Signs Features:**

- 8 Double-Sided 11 in x 14 in P.V.C. Signs
- 15 Attractive Gold Silk Screened Messages
- Large 15 in Wide Display
- Signs Store Conveniently Inside the Frame
- Aluminum Frame
- Steel Pole
- 3.5 lb Steel Base



**Hostess Signs**

**Classic Black Finish**

90033

**Classic Chrome Finish**

90038

**Classic Brass Finish**

90039

Case Pack: 2  
 Case Pack Weight: 20.2 lb  
 Case Pack Dimensions: 27.2 in x 4.3 in x 16.5 in  
 Case Cube: 1.13 cu ft



**Wall Mounted Smoking Receptacle**

90221

- Features a Push Button on the Top to Empty Contents
- Self-Extinguishing Plate
- Modern Matte Black Design that Blends with Your Decor
- Weather-Resistant
- Mounting Bracket Included
- Commercial Grade Steel

Case Pack: 2  
 Case Pack Weight: 5.3 lb  
 Case Pack Dimensions: 16.7 in x 10.2 in x 5.1 in\*  
 Case Cube: .51 cu ft  
 \*Estimated dimensions



**Smoking Receptacle**

90026

- Sleek Design with Push Button Feature to Easily Remove the Top and Empty Contents
- Commercial Grade Steel
- Weather-Resistant
- Loop on Back Allows You to Secure the Receptacle
- Weighted Base for Stability
- Self-Extinguishing Plate

Case Pack: 2  
 Case Pack Weight: 29 lb  
 Case Pack Dimensions: 35.3 in x 18.9 in x 7.4 in  
 Case Cube: 1.9 cu ft



**Level Wedge**

90233

- Rubber Texture and Ridges Creates a Non-Slip Grip
- Easily Cuts Down to Size with Scissors or Utility Knife
- Instantly Fix Uneven Floors, Tables, Furniture and Equipment

Case Pack: 10  
 Case Pack Dimensions: 185(L)x 150(H) mm

**Level Wedge**

90234GD

- Rubber Texture and Ridges Creates a Non-Slip Grip
- Ridges Fit Together for Strong Stacking
- Instantly Fix Uneven Floors, Tables, Furniture and Equipment

Case Pack: 75  
 Case Pack Dimensions: 95(L) x 55(H) x 100(D)mm



**Flexible/Expandable Fish Basket**

06630Y

- Ideal for Grilling Large Filets and Whole Fish
- Convenient Folding Handle Makes Storage Easy
- Non-Stick for Easy Cleaning

Case Pack: 6  
 Case Pack Weight: 6.3 lb  
 Case Pack Dimensions: 6.7 in x 18.7 in x 6.5 in  
 Case Cube: 0.47 cu ft



**Triple Fish Basket**

06623Y

- Ideal for Grilling Large Filets and Whole Fish
- Convenient Folding Handle Makes Storage Easy

Case Pack: 6  
 Case Pack Weight: 6.8 lb  
 Case Pack Dimensions: 11.7 in x 14.6 in x 6 in  
 Case Cube: 0.59 cu ft



P R O F E S S I O N A L

Mike Remus  
Sales Manager  
516-962-2375  
mremus@mrbarbq.com

Robert Sukiel  
Director of Sales  
516-962-2402  
rsukiel@mrbarbq.com



1.888.398.8643 • Chef-Master.com

© Mr. Bar-B-Q Products LLC  
Chef Master® and Mr. Bar-B-Q® are registered  
trademarks of Mr. Bar-B-Q Products LLC