



Chef Tables - Stainless Steel Top

Stainless Steel Cabinet Base Tables - No Doors

Certifications:



Features:

- 1 5/8" x 6" Straight S/S Leg
- Legs Adjust 1" in Height
- 96" Units have a Center Mullion
- Extra Supporting "C" Channels
- Casters Available



Material:

- T-304 14 ga. Stainless Steel Top
- T-304 18 ga. Stainless Steel Body
- Stainless Steel Legs & Feet

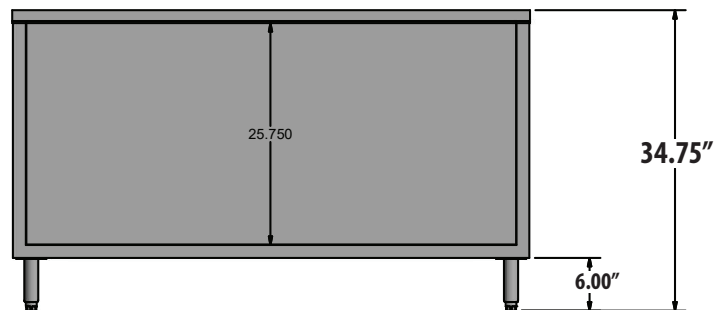
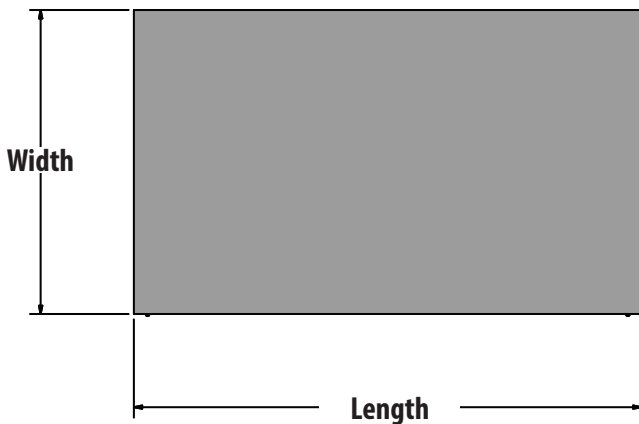
Options:

- Adjustable Shelf



Length	24" Width	Product Weight (lbs)	*Top Capacity	*Shelf Capacity	*Total Capacity	30" Width	Product Weight (lbs)	*Top Capacity	*Shelf Capacity	*Total Capacity
18"	CST-2418	73.00	1000	1000	1000	CST-3018	82.00	1000	1000	1500
24"	CST-2424	83.00	1000	1000	1000	-	-	-	-	-
30"	-	-	-	-	-	CST-3030	108.00	1000	1000	1000
36"	CST-2436	103.00	1000	750	1000	CST-3036	120.00	1000	750	1000
48"	CST-2448	130.00	1000	300	1000	CST-3048	139.00	1000	300	1000
60"	CST-2460	150.00	940	150	1000	CST-3060	168.00	940	150	1000
72"	CST-2472	170.00	600	100	700	CST-3072	172.00	600	100	700
96"	-	-	-	-	-	CST-3084*	232.00	1500	900	1500
						CST-3096*	270.00	1500	600	1500
						CST-30120*	325.00	1500	300	1500

* Has a Center Mullion
* Weight must be evenly distributed



PRODUCT DATA SHEET

BK RESOURCES

