



Project Name _____

Item # _____

Enhanced Equipment
 2610 E. Woodward Ave. Fresno, Ca. 93721
 Email: customerservice@enhancedequipment.com
 Phone (720) 309-1902

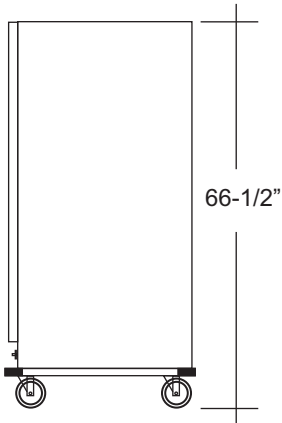
Heater Proofer with Universal Pan Slides



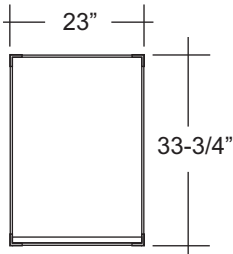
HC1836HPICU / HC1836HPCU
 Insulated Non-Insulated

FEATURES & BENEFITS

- Insulated or Non Insulated - Heavy duty aluminum construction.
- Air baffle and circulating air blower provide even heat distribution.
- Proofing / Heating Module with dual heating elements is 120VAC, 14 amp, 60 cycle, 1500 watts. Plugs into any standard 110 outlet.
- Easy dual proof/heat control:
 "Proof" mode Humidity from 30% to 95%.
 Temperatures up to 115°F (46°C)
 "Heat" mode Nominal Temperatures up to 180°F (82°C)
- Easy read led thermometer
- 16 pan slides hold a variety of pan configurations from sheet pans to steam table pans.
- Clear door for easy viewing of produce while retaining heat because door is opened less. Complete seal door gasket prevents heat loss. Easy pull full length handle for door opening
- Clear door for easy viewing of produce while retaining heat because door is opened less. Complete seal door gasket prevents heat loss. Easy pull full length handle for door opening
- Drip trough catches condensation to reduce wet floors conditions. Stainless steel internal water pan collects condensation or is used in proofing mode.
- Corner bumpers standard to protect walls and equipment.
- 5" polyurethane plate casters standard with brakes for easy maneuverability.



Side View



Top View

Electrical

Voltage	115/60/1phase
Amps	14
Plug Type	NEMA 5-15P
Max Fuse Size	20

Shipping Information

Model	HC1836HPICU	Shipping Weight	235 Lbs
Model	HC1836HPCU	Shipping Weight	221 Lbs
Model	Both Units	Package Dimension	$\frac{W}{23"} \times \frac{D}{33.75"} \times \frac{H}{66.5"} $

Specifications subject to change without notice.



Certification: ETL Sanitation (NSF)