



GRAMERCY

Executive Chef Coat

EXDZ001 | XS-3XL



Back collar apron holder with engraved snap tab

4.6 oz. 100% cotton denim fabric

Right sleeve cell phone/notebook pocket with hidden earhole

Left sleeve thermometer pocket

Single-breasted with zipper closure

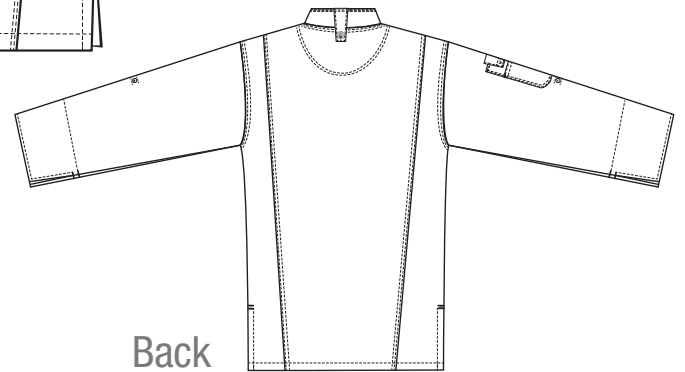
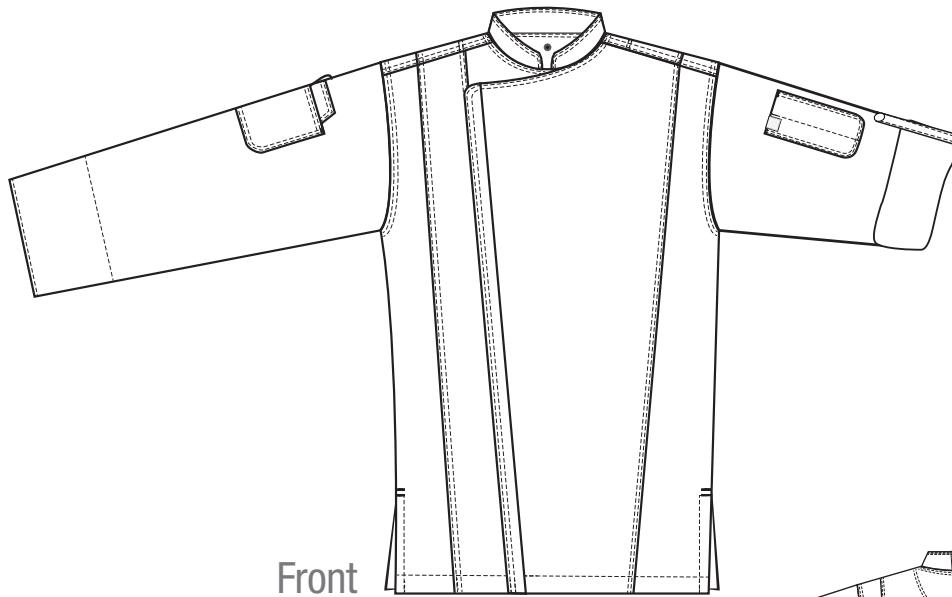
Roll-up long sleeve with tab

Side seam slits

MEN'S/UNISEX COATS (ALPHA)											
Chest (in)	32/34	36/38	40/42	44/46	48/50	52/54	56/58	60/62	64/66	68/70	72/74
Size	XS	S	M	L	XL	2XL	3XL	4XL	5XL	6XL	7XL
Chest (cm)	81/86	91/97	102/107	112/117	122/127	132/137	142/147	152/157	163/168	173/178	183/188

MF 1 Modern Fit | Tailored fit, cut slim through the chest and body.

GRAMERCY



EXDZ001



BLK (black)



IBL (indigo blue)

- 4.6 oz. 100% cotton denim fabric
- Single-breasted with zipper closure
- Back collar apron holder with engraved snap tab
- Side seam slits
- Contrast double-needle stitching
- Roll-up long sleeve with tab
- Left sleeve thermometer pocket
- Right sleeve cell phone/notebook pocket
- Hidden earphone hole

One of our bestselling coats, the Gramercy gets a refresh just in time for summer. Offered in a vivid blue hue, this 100% cotton long-sleeve jacket is crafted to be especially lightweight, with a modern fit that cuts closer to the torso. A zipper closure, roll-up sleeves, and contrast double stitching complete the look, with multiple sleeve pockets to help chefs stay organized when the kitchen heats up. Another new feature for 2017? Side slits that offer increased flexibility and mobility for all forms.



800.372.6621 | www.chefworks.com

Chef Works Corporate Headquarters • 12325 Kerran Street • Poway, CA 92064