

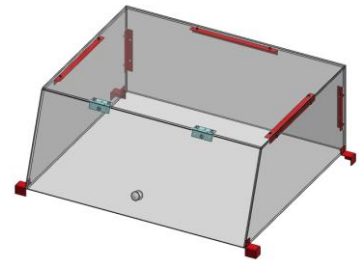


## Specifications & Features

**Model # HDG5001**

### Hotdog Roller Grills

These high quality roller grills are available in 8 to 30 hotdog capacities to meet any application. Stainless steel construction, removable drip trays and stainless steel rollers ensure ease of cleaning. All of the Cozoc grills feature a high-torque motor with 360-degree roller rotation that will insure evenly cooked hotdogs every time! Optional sneeze guards and dry bun boxes are available for all models.



#### FEATURES:

- Designed for cooked hotdogs
- Adjustable thermostat,
- Stainless steel rollers make cleaning a breeze
- Accommodates any size hotdog, sausages and breakfast links
- Front & rear heat controllers (on 21 & 30 dog models) for cooking & holding
- 360 degree roller rotation insures even heating of hotdogs
  - High torque motor for years of durability
- Optional sneeze guards available on all models for self-serve environments
- Limited manufacturers warranty

Note: Dimensions and Specification are subject to change without notice.



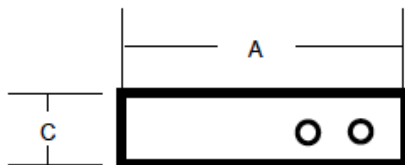


## Dimensions & Specifications

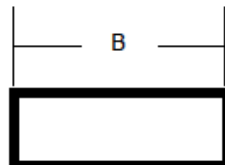
Model # HDG5001

Hotdog Roller Grills

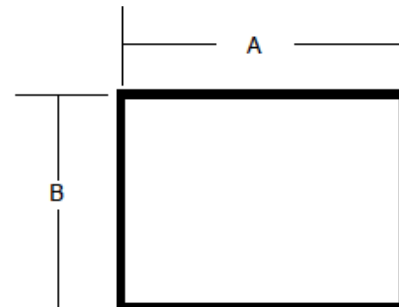
Front View



Side View



Top View



Part #	Dogs	Volts	Watts	Dimensions (AXBXC)( Package)	Net Weigh	Gross Weight	Approvals
HDG5001-5	8	120V	320W	17 3/4"x13" x 10"	13 lb	15 lb	ETL
HDG5001-6	10	120V	380W	17 3/4"x14 1/2" x 10"	14 lb	18 lb	ETL
HDG5001-7	18	120V	640W	24"x16" x 10"	20 lb	24 lb	ETL
HDG5001-8	21	120V	730W	24"x17 3/4" x 10"	22 lb	26 lb	ETL
HDG5001-9	24	120V	820W	24"x19 1/4" x 10"	24 lb	28 lb	ETL
HDG5001-11	30	120V	1000W	24"x22" x 10"	28 lb	32 lb	ETL

Note: Dimensions and specifications are subject to change without notice.